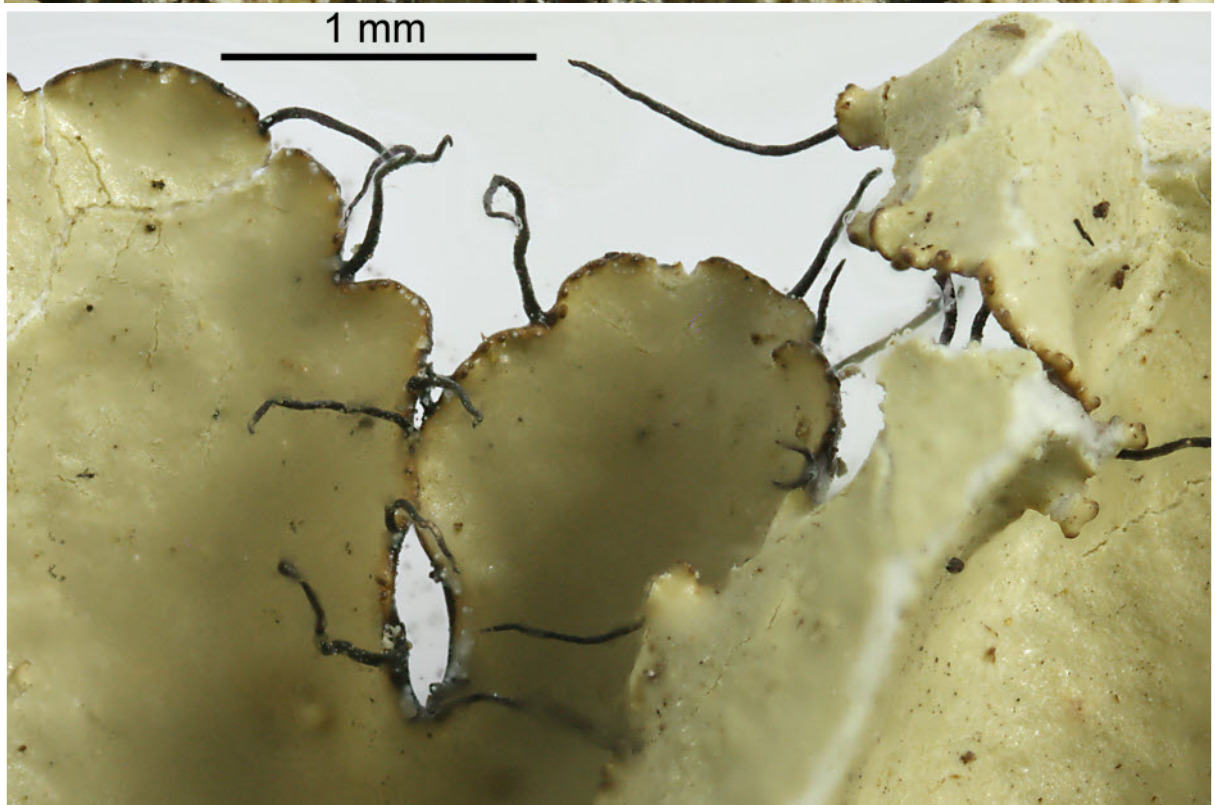
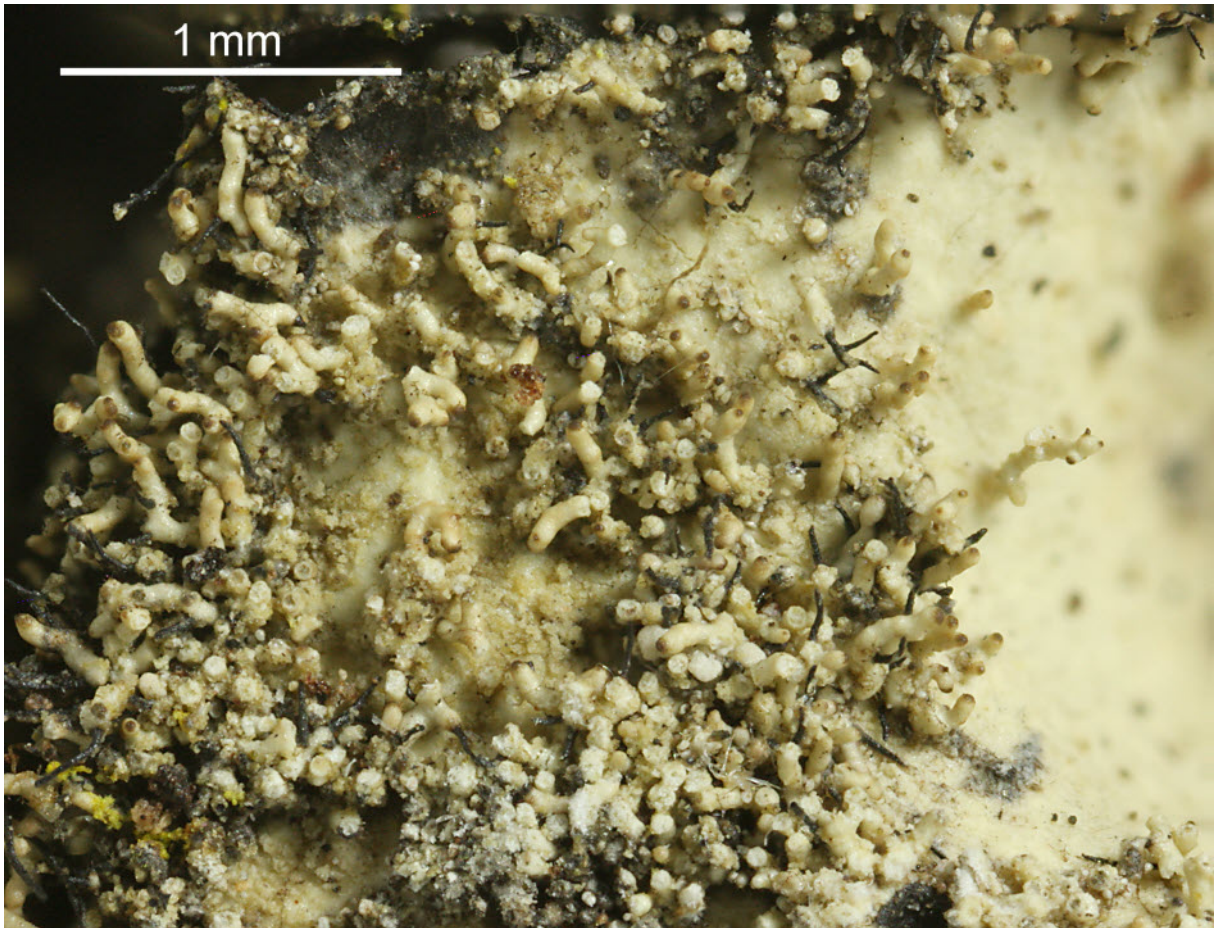


*Parmotrema xanthinum* (Müll. Arg.) Hale

Thallus pale yellowish-greenish grey, loosely adnate, ciliate, emaculate. Isidia simple to coralloid, laminal to marginal. Soredia absent. Medulla pale yellow. Lower surface black with brown naked zone. Chemistry: cortex K<sup>+</sup> yellow, C<sup>-</sup>, KC<sup>-</sup>, P<sup>-</sup>; medulla K<sup>-</sup>, C<sup>-</sup>, KC<sup>±</sup> red, P<sup>-</sup>; usnic acid (maj), atranorin (trace), protolichesterinic acid (maj). Pantropical.

[11652], USA, North Carolina, Pender County: Holly Shelter Game Land, just E of Shaw Highway (SR 1523) at Lodge Road, 8,5 km S of North Carolina 53, 34°33'07" N, 77°48'41" W, 10 m. *Pinus palustris*-*Quercus laevis* dominated sand scrub, on bark of oak. Leg. Robert S. Egan 18. March 2003 (EL-16,015), Tuckerman Workshop Foray Locality 4.





*Parmotrema xanthinum*