

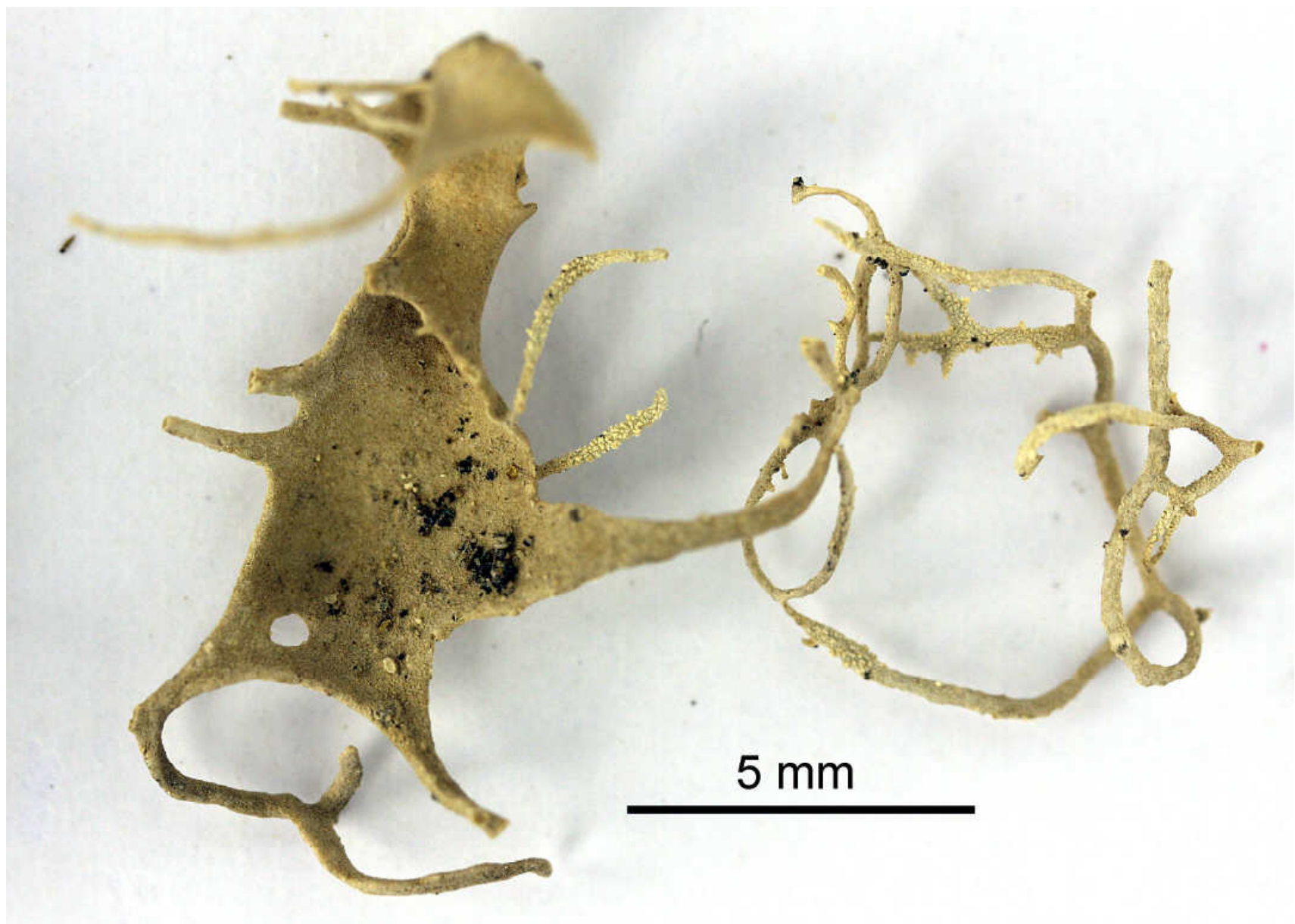
Pentagenella fragillima Darb. (1898)

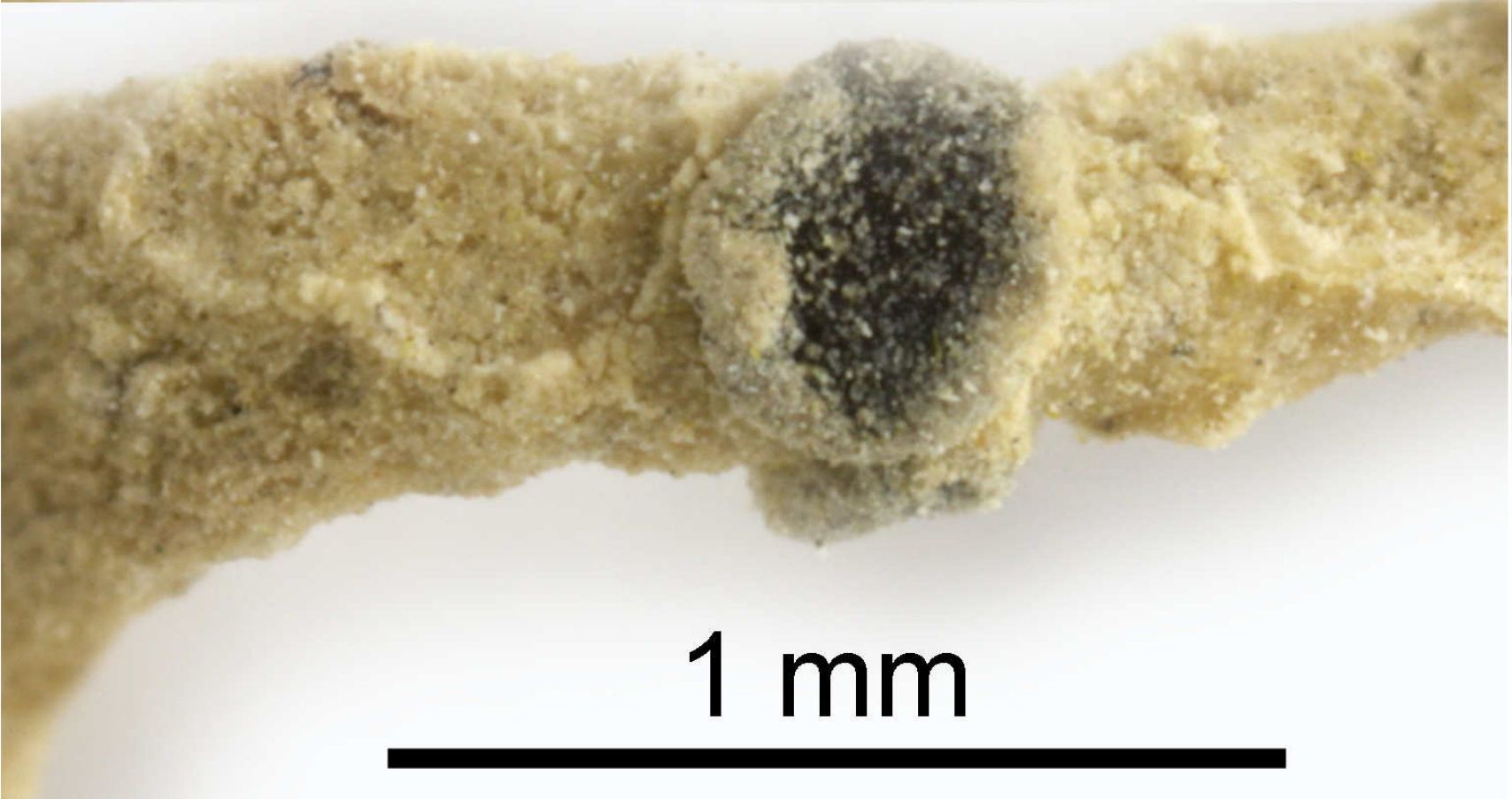
Roccella fragillima (Darb.) Follmann (1998)

Roccella fragillissima Mont. ex Follmann (1998)

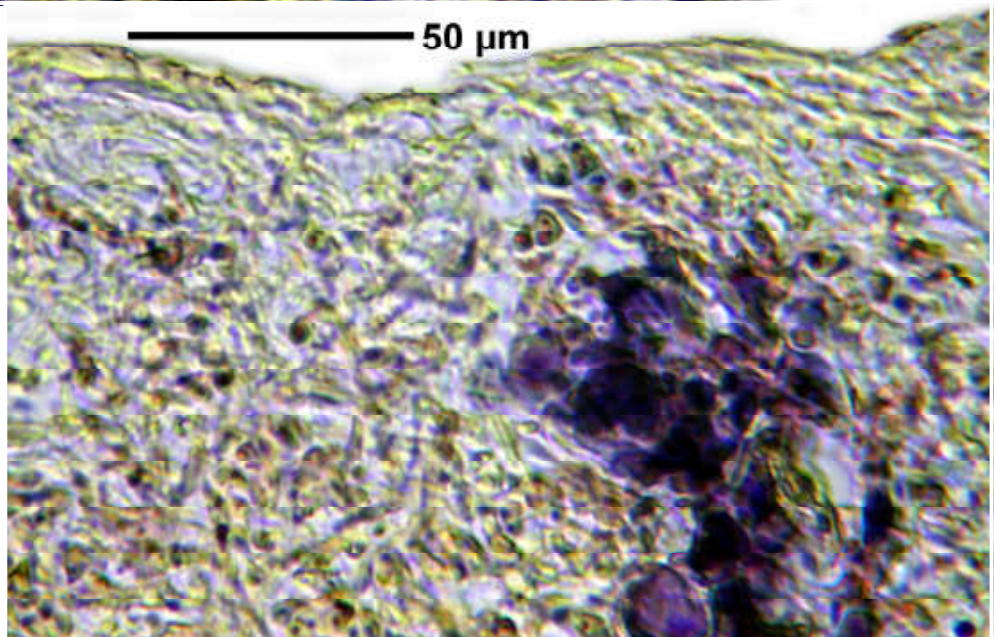
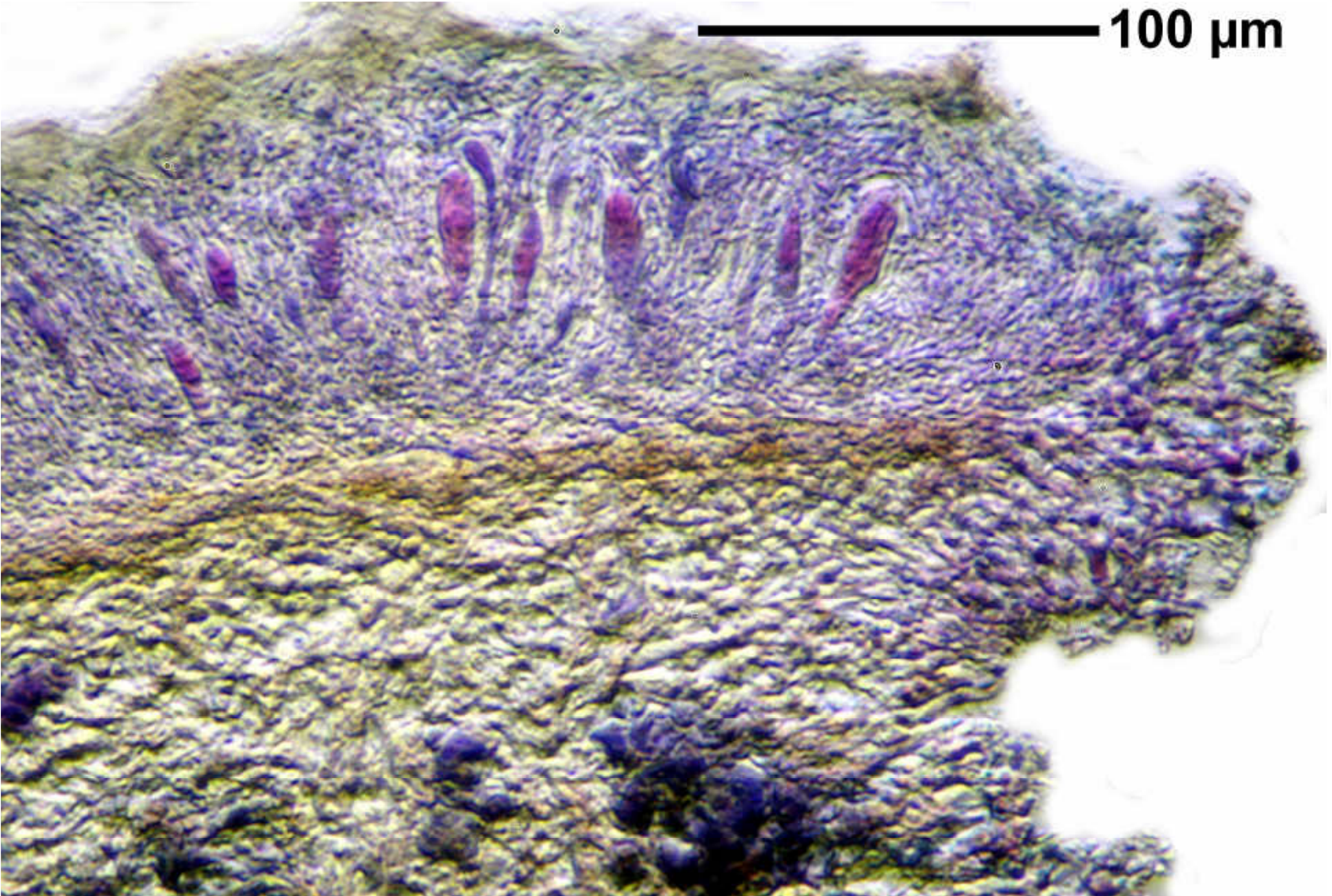
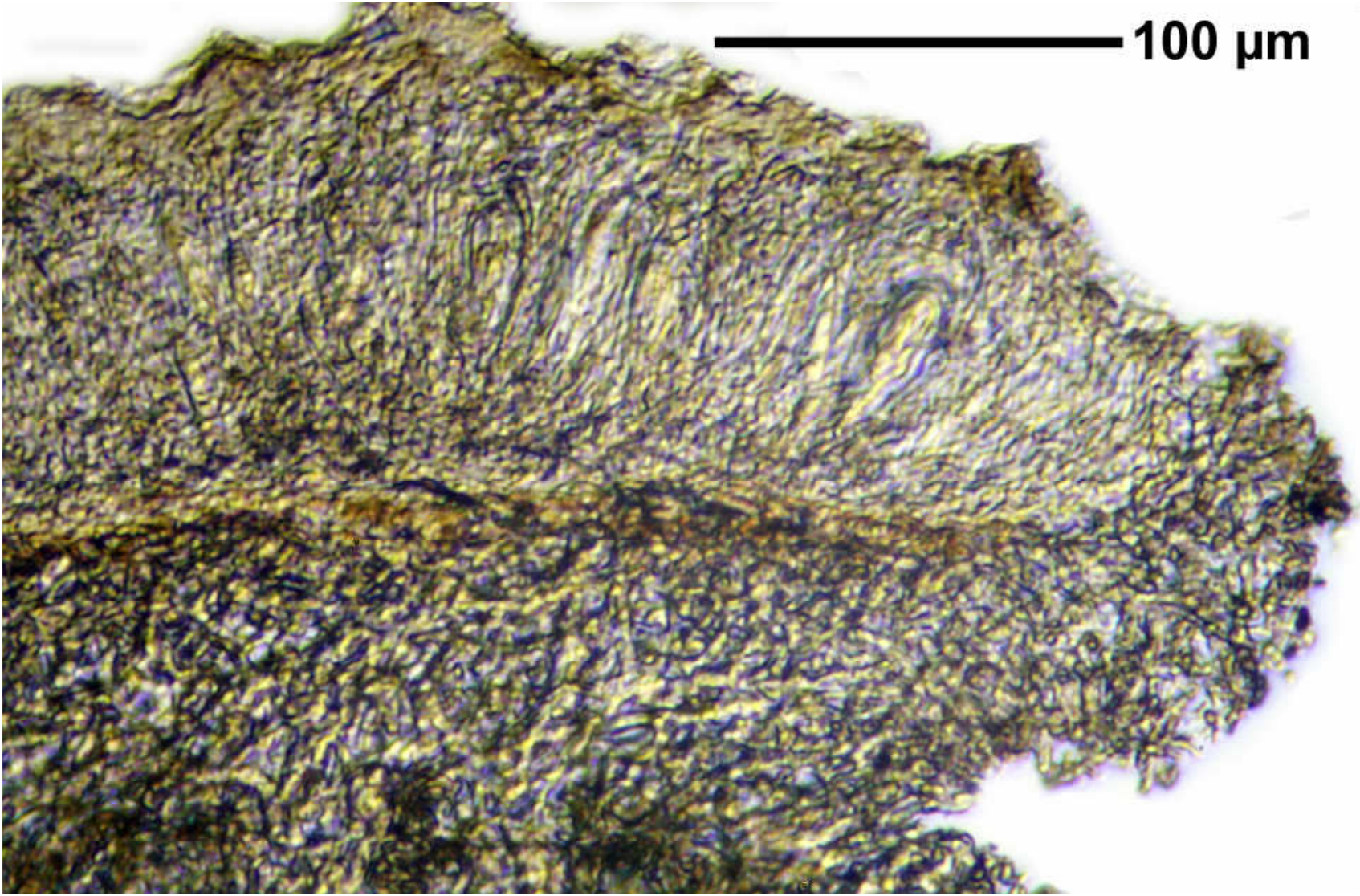
Thallus saxicolous, grey to brown, not soresiate, texture soft but very fragile, main branches at the base flat, tips cylindrical, sometimes anastomosing, surface rough, holdfast internally white to brown. Cortex indistinctly intricate to periclinal plectenchymatous, not differentiated from the medulla. Apothecia round. Hypothecium hyaline. Ascospores hyaline, 3-septate, $19\text{--}21 \times 7\text{--}8 \mu\text{m}$. Cortex C + red, K –, Pd + yellow to red, medulla C–, major substances erythrin, protocetraric. – Chile.

Chile. Antofagasta, Cerro Moreno, mittlerer Westhang, Felswand, 600 m, SW. Leg G. Follmann 09.1991- Herbarium Follmann Nr. 34336 (in Berlin). [GF34336]

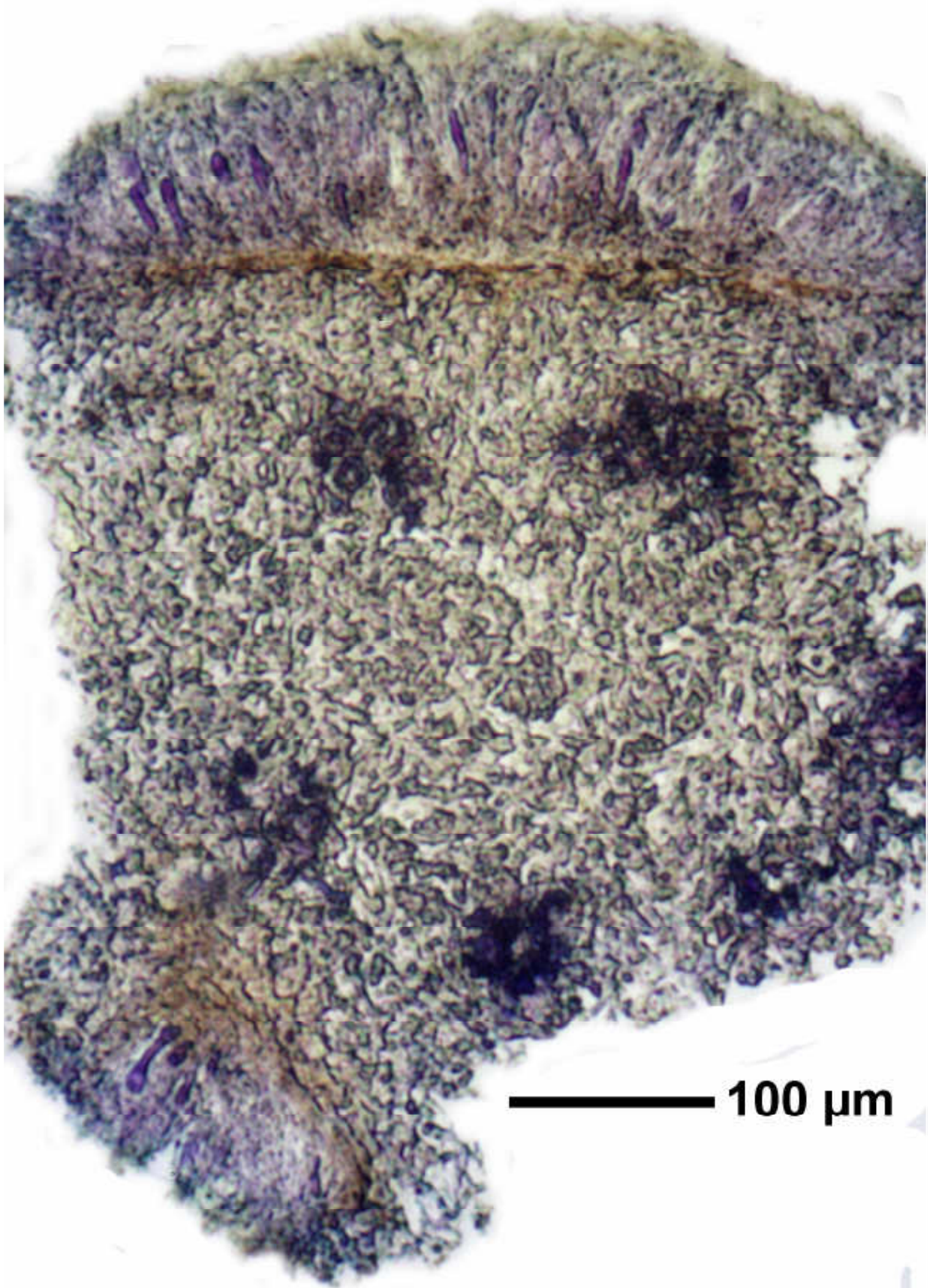
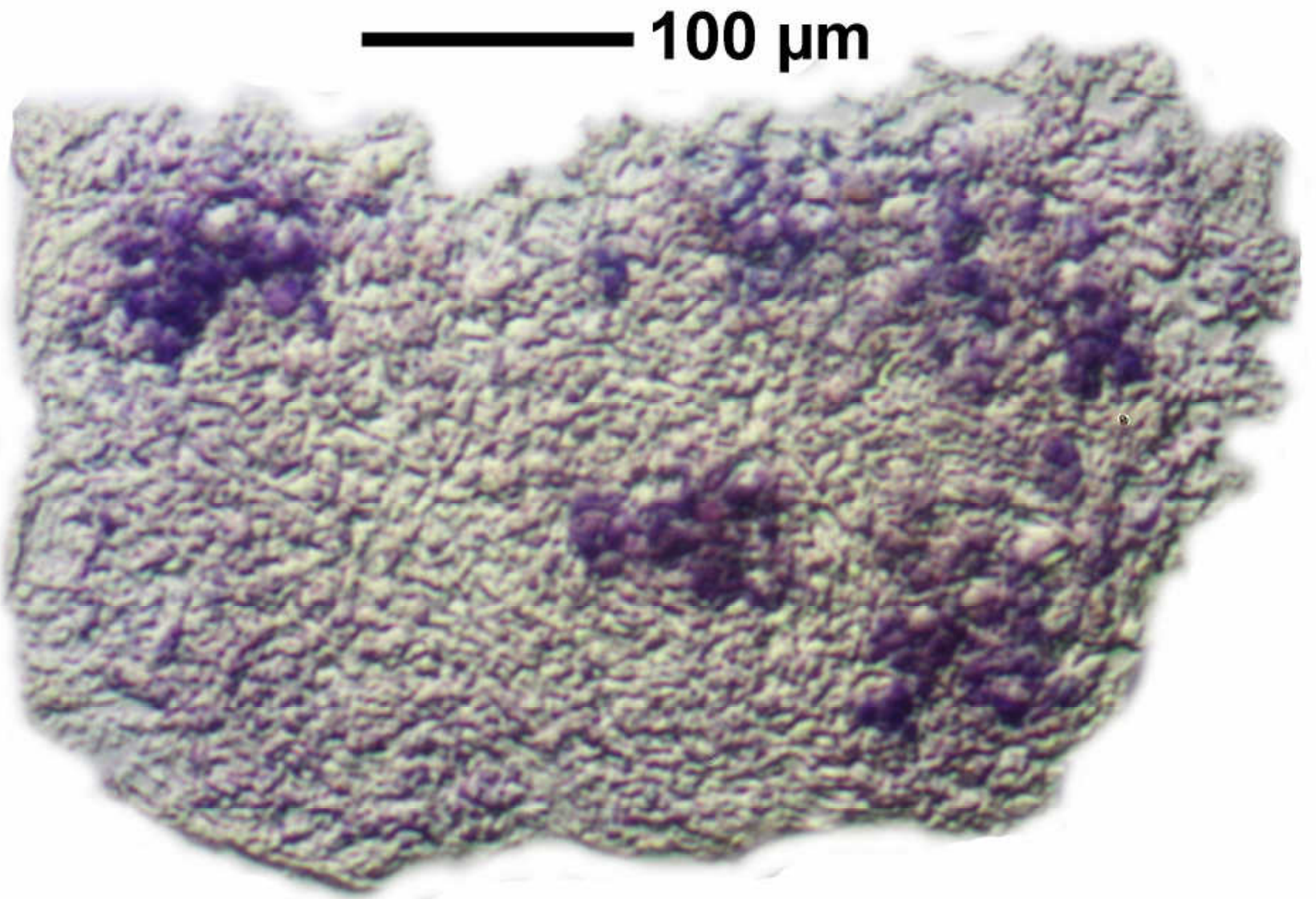




Pentagenella fragillima



Pentagenella fragillima



Pentagenella fragillima