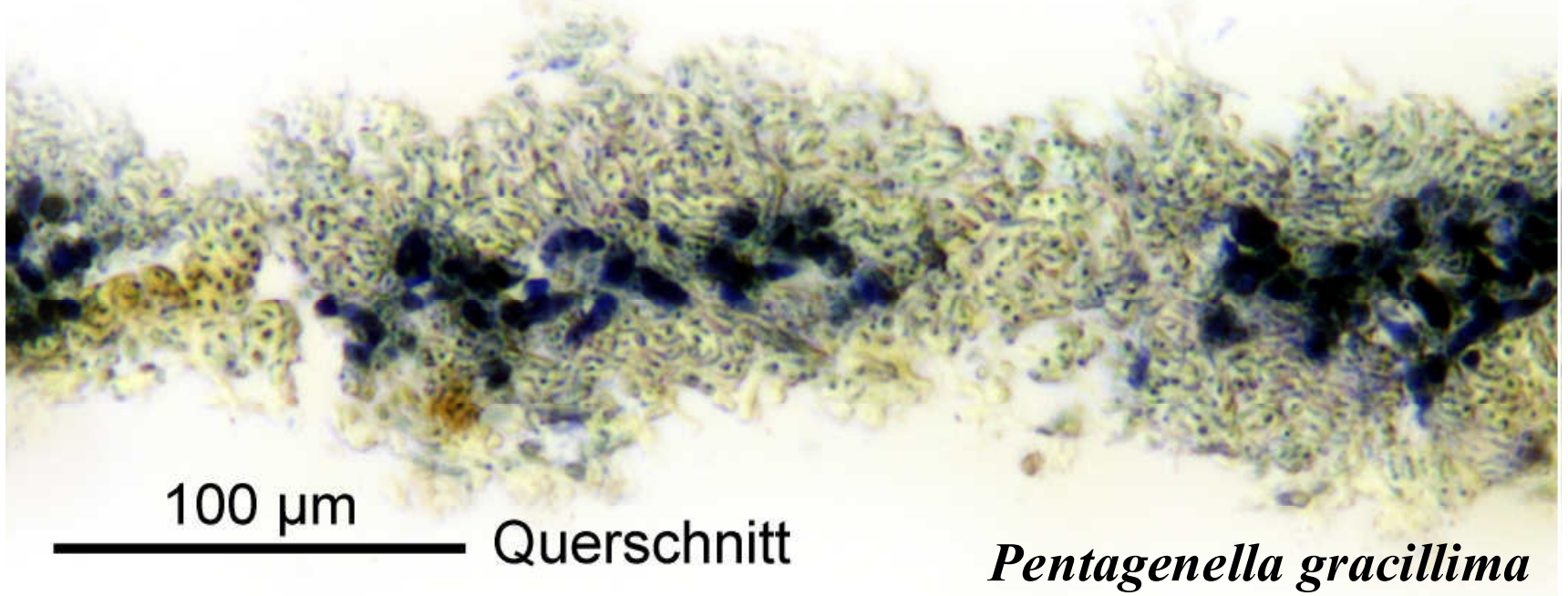
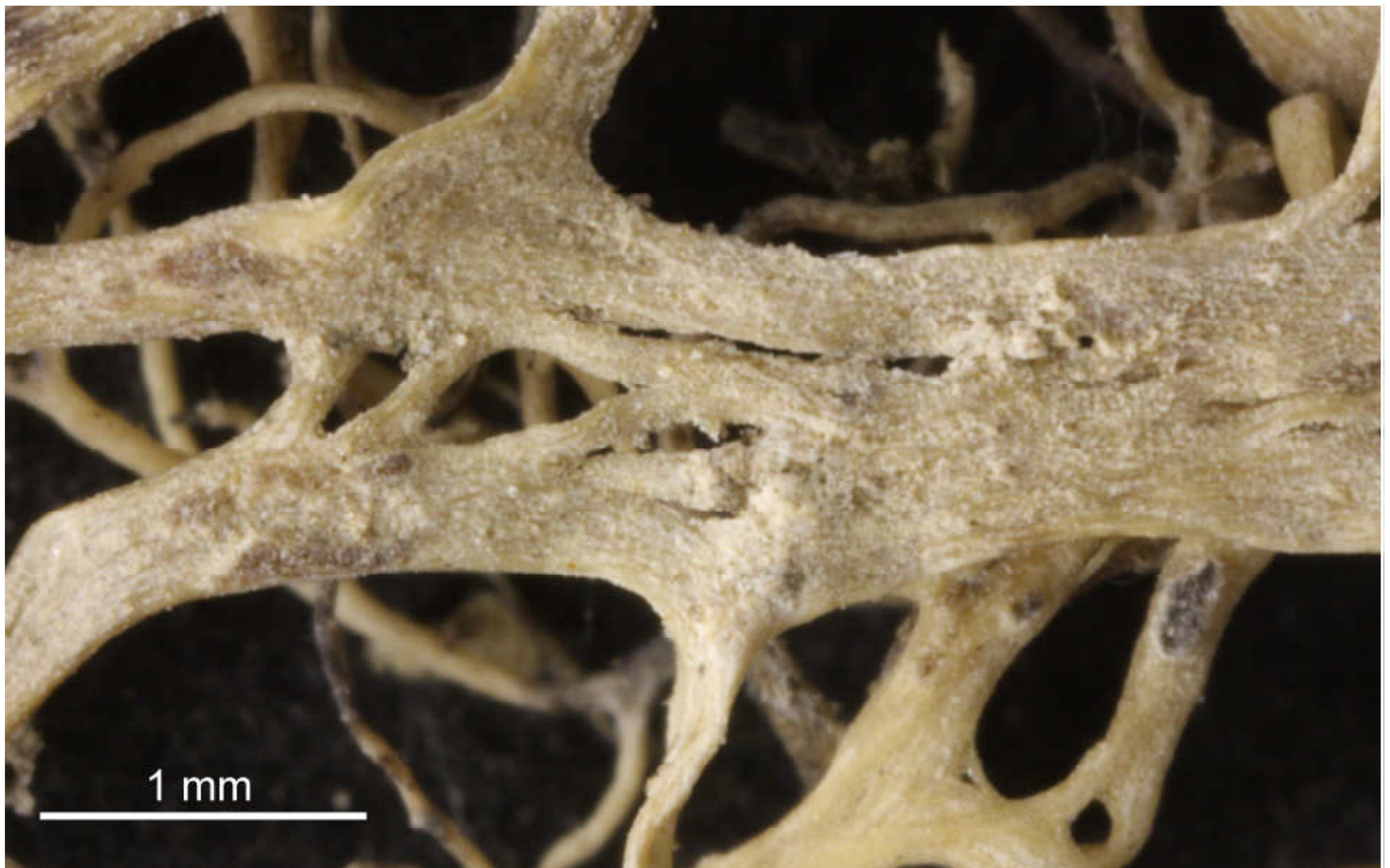


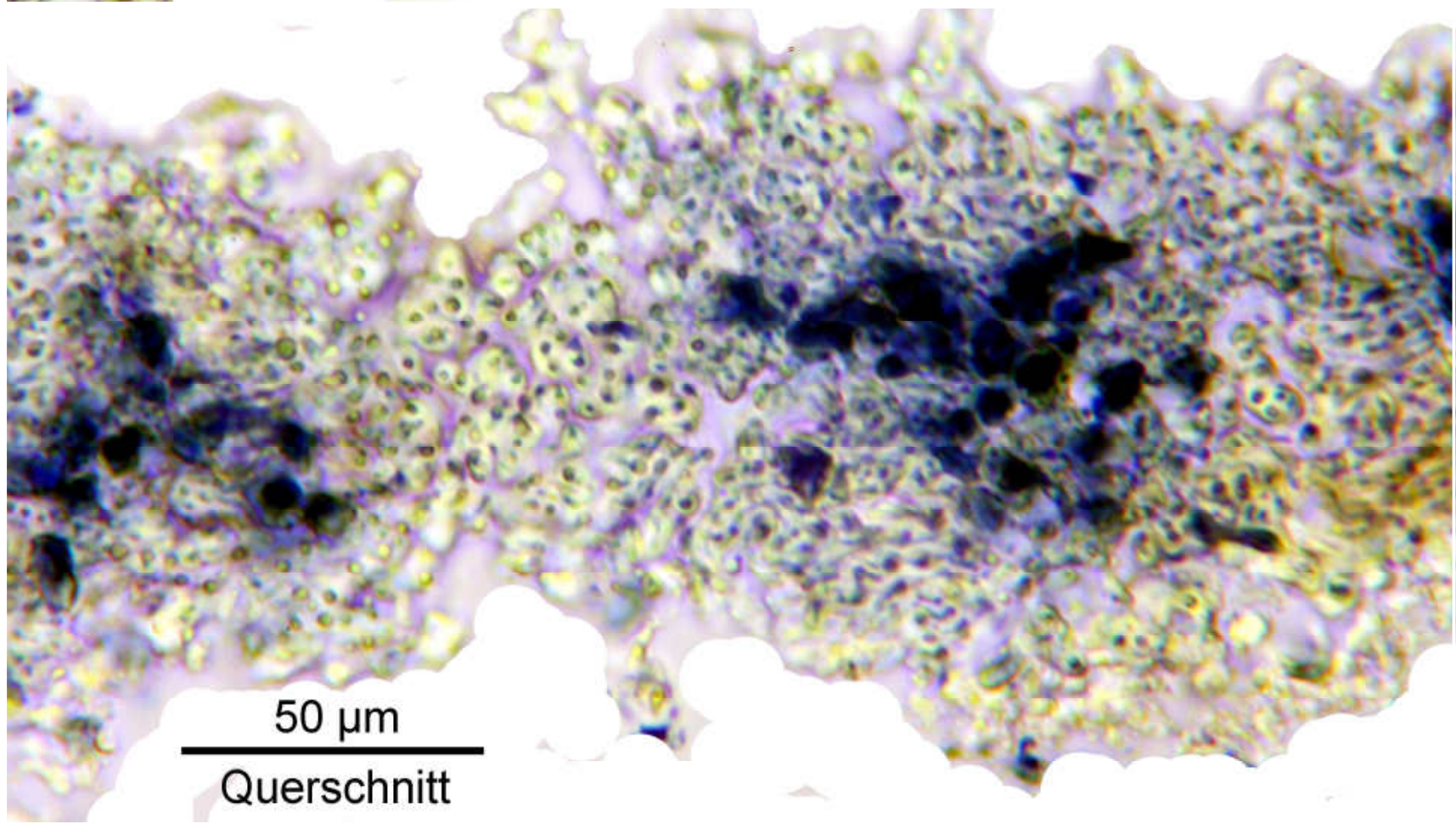
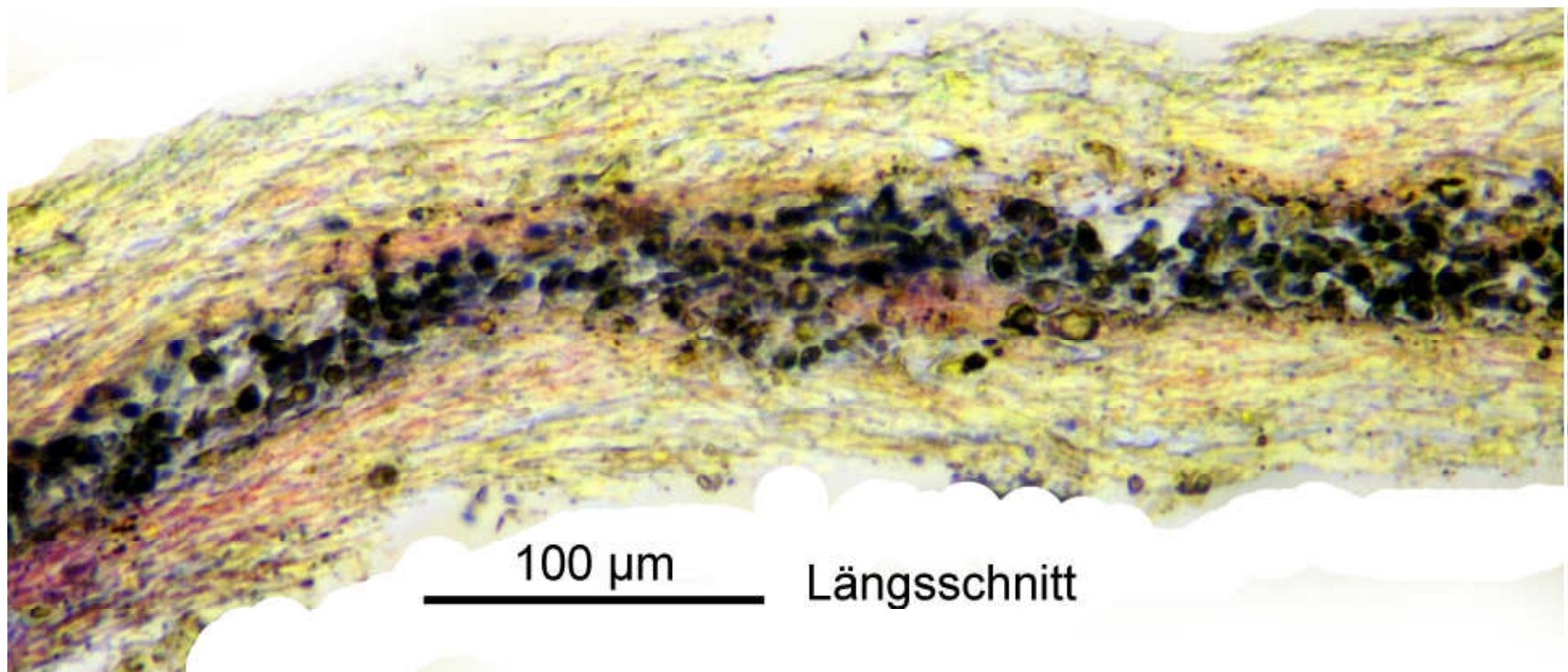
*Pentagenella gracillima* (Kremp.) Ertz & Tehler (2011)  
*Ingaderia gracillima* (Kremp.) Feige & Lumbsch (1993)  
*Darbishirella gracillima* (Kremp.) Zahlbr. (1898)  
*Roccella dissecta* Müll. Arg. (1891)  
*Roccella gracillima* Kremp. (1877)  
*Roccella intricata* f. *tenuior* Hampe ex Darb. (1898)  
*Roccella intricata* var. *alectoroides* Mont. (1849)  
*Roccella mollis* f. *filescens* Hampe ex Darb. (1898)  
*Roccella tinctoria* ssp. *alectoroides* Nyl. ex Darb. (1898)

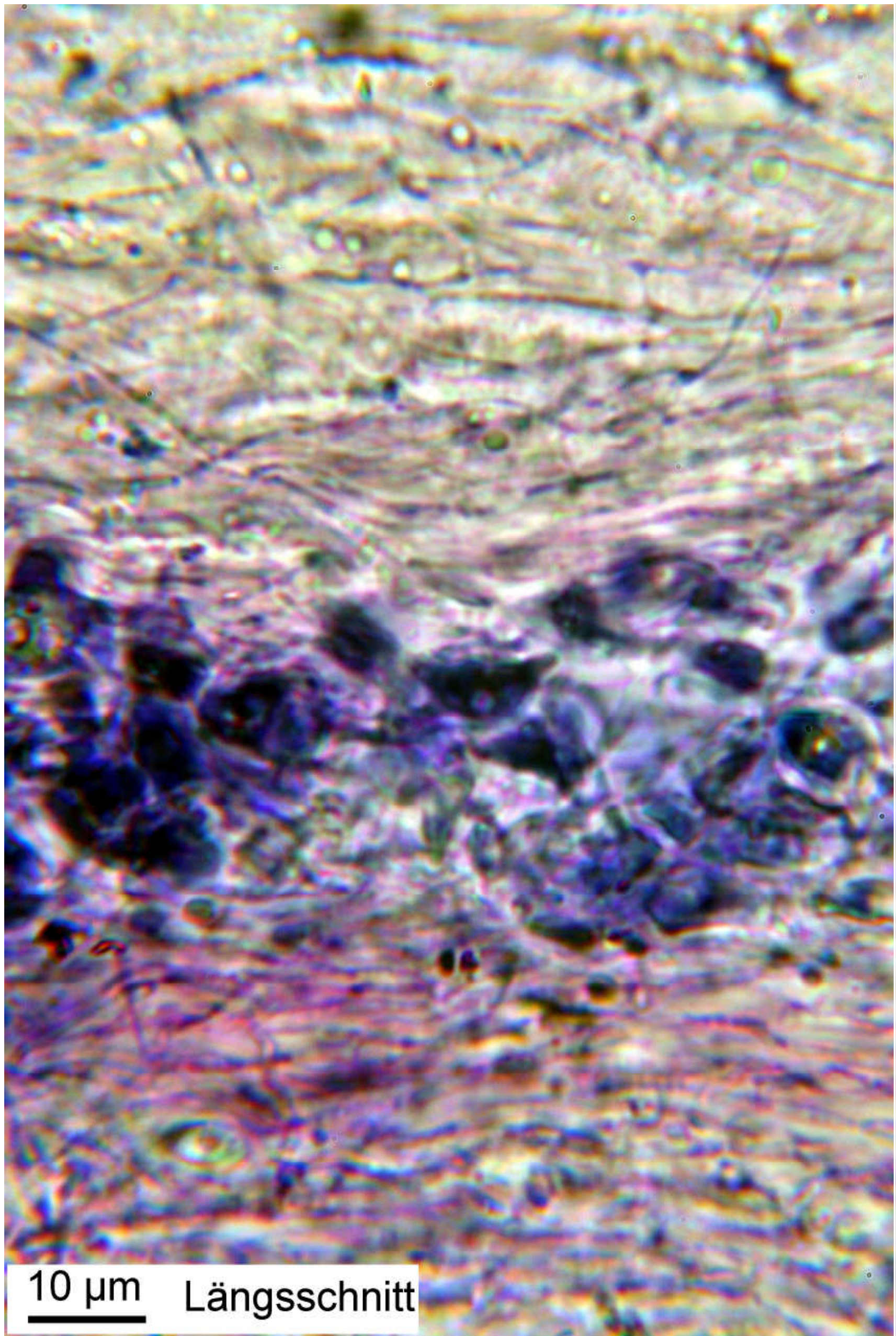
Thallus saxicolous or corticolous, grey to brown, not soresiate, texture soft, flattened, often anastomosing, tips rounded, surface rough, hold-fast internally white to brown. Cortex distinctly periclinal plectenchymatous, not strongly differentiated from the medulla. Apothecia round or somewhat elongated Hypothecium hyaline to brownish. Ascospores brown, 3-septate,  $16\text{--}20 \times 7\text{--}8 \mu\text{m}$ . Cortex C –, K –, Pd + yellow, medulla C –, major substance psoromic. – Chile, Peru.

Mittelchile, Prov. Aconcagua: häufig an stark geneigten Küstenfelsen (Porphyrituff) im Roccelletum portentosae, 10 m, SW, pH 6,3, Los Molles bei Los Vilos; Follmann 09.1964. Leg. et det. G. Follmann 1964. Lichenes Exsiccati Selecti A Museo Botanico Berolinensi Editi No. 3. [2513]









*Pentagenella gracillima*