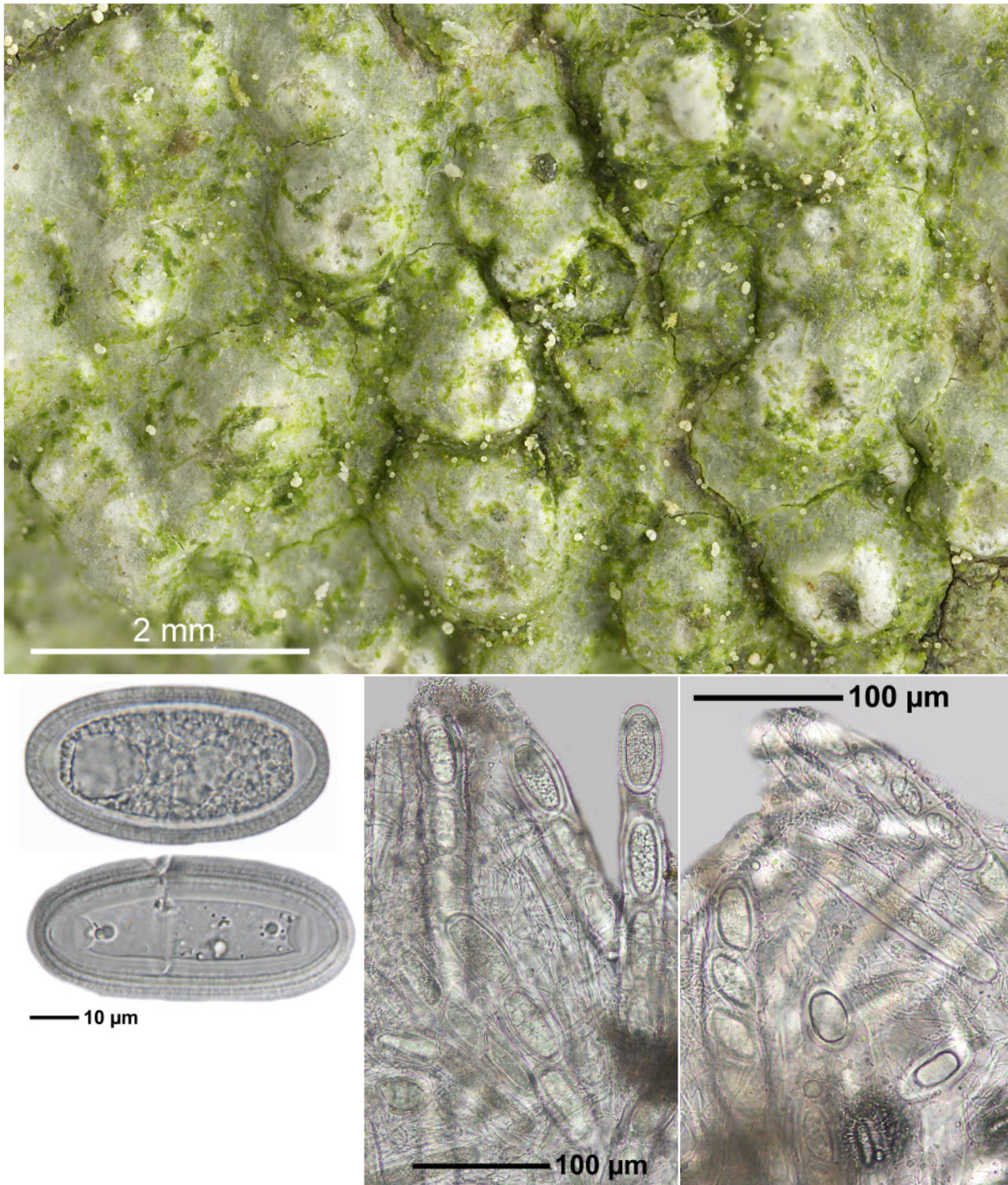
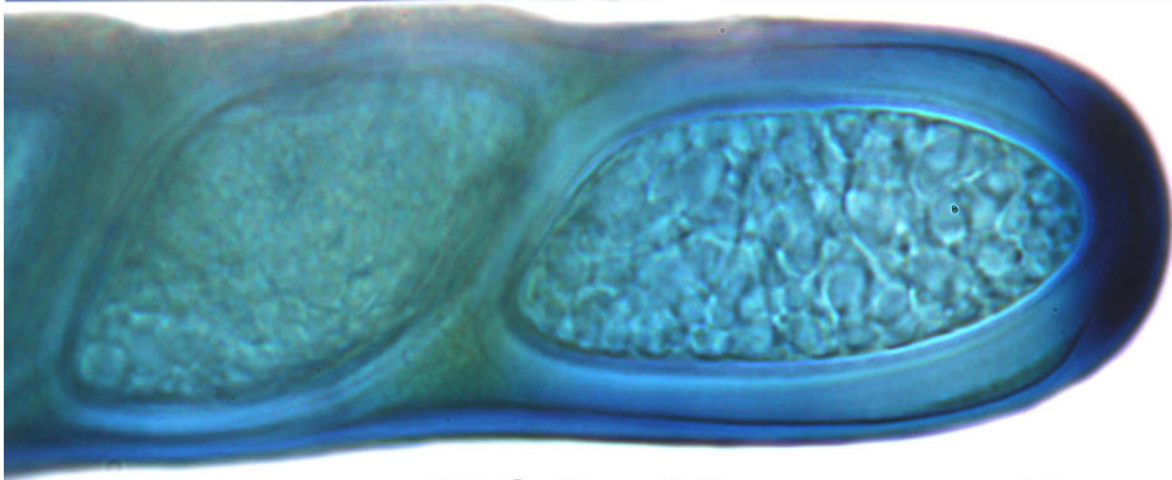
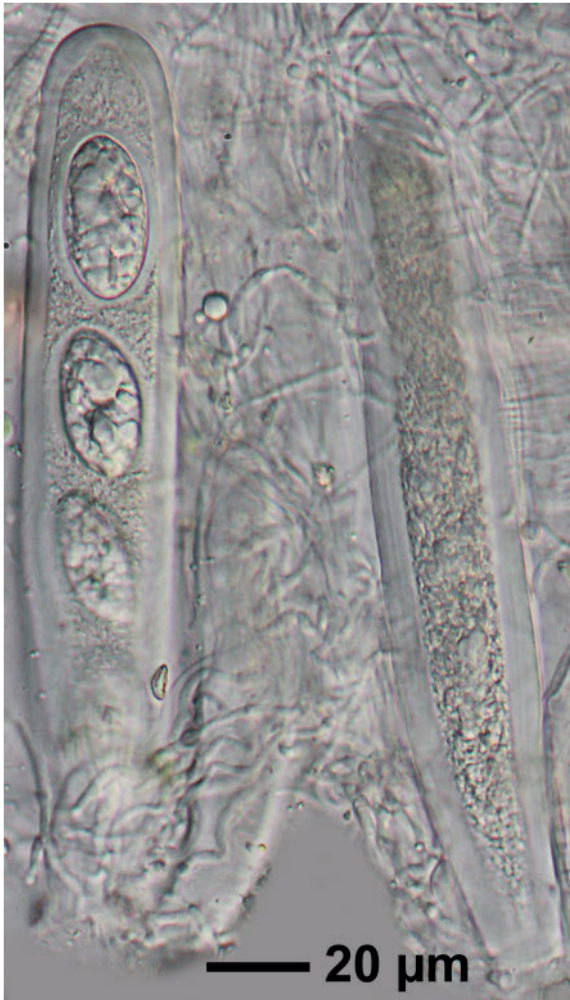


*Pertusaria leioplaca* DC.

Thallus K-, C-, P-, UV+ orange. Sporen 1-zellig, hyalin, 4/Ascus, ca. 65 x 34  $\mu\text{m}$ .

[17103], Germany, Baden-Württemberg, Alb-Donau-Kreis. 3,4 km NW von Westerheim. an *Carpinus* beim Parkplatz zur Schertelshöhle, 48.537° N, 9.591° E, 800 m. Leg. et det. Schumm 01.05.2011.





*Pertusaria leioplaca*

**K&J + blue**

**— 10 μm**