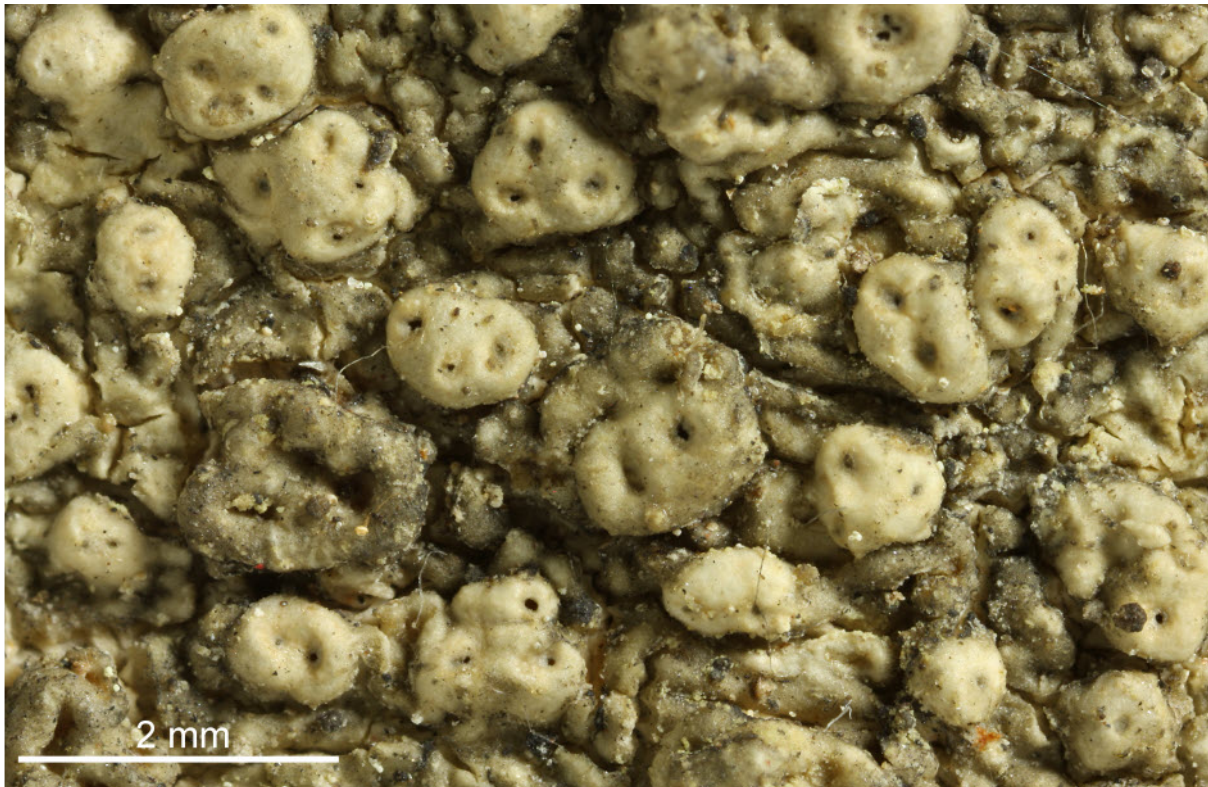


*Pertusaria pertusa* (Weigel) Tuck.

Sporen hyalin, 1-zellig, 145-162 x 55-58  $\mu\text{m}$ , 7-10  $\mu\text{m}$  dickwandig, Oberfläche feinwarzig, 2/Ascus. Thallus UV+ gelborange (Coronaton), K+ gelb (im Schnitt ohne rote Kristalle, Stictinsäure)

[18585], Germany, Pfälzer Wald, Kreis Kaiserslautern, Karlstal bei Trippstadt, ca. 300-350 m, Buntsandsteingebiet, Schluchtwald (Luzulo-Fagetum), an Fagus. TK 6612. Leg. Schumm & Lauer 10.06.1978, det. Schumm.

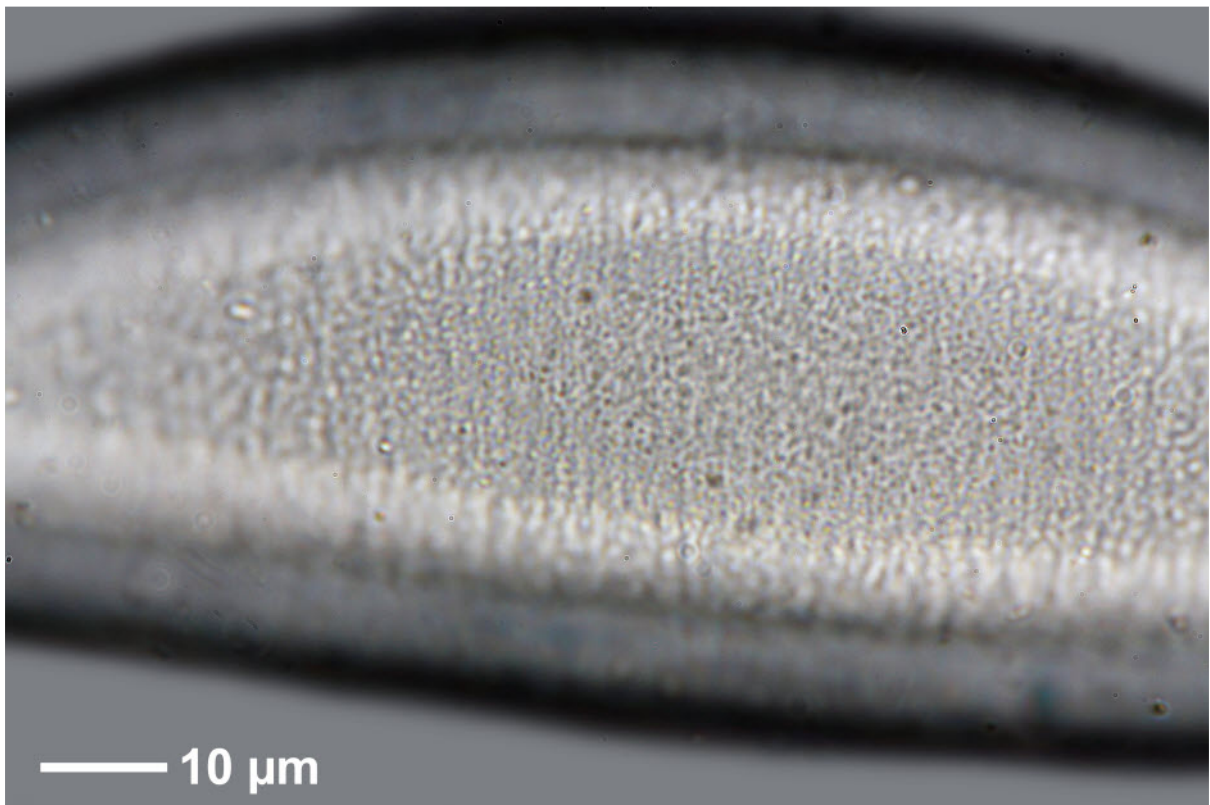




20 μm

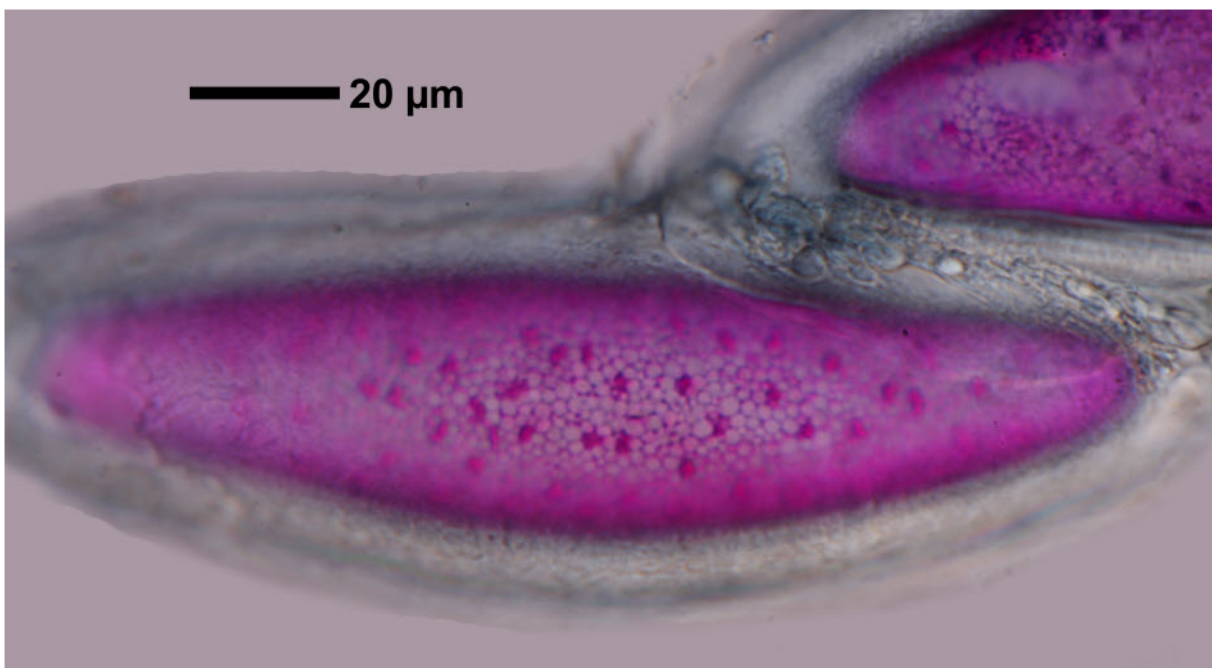
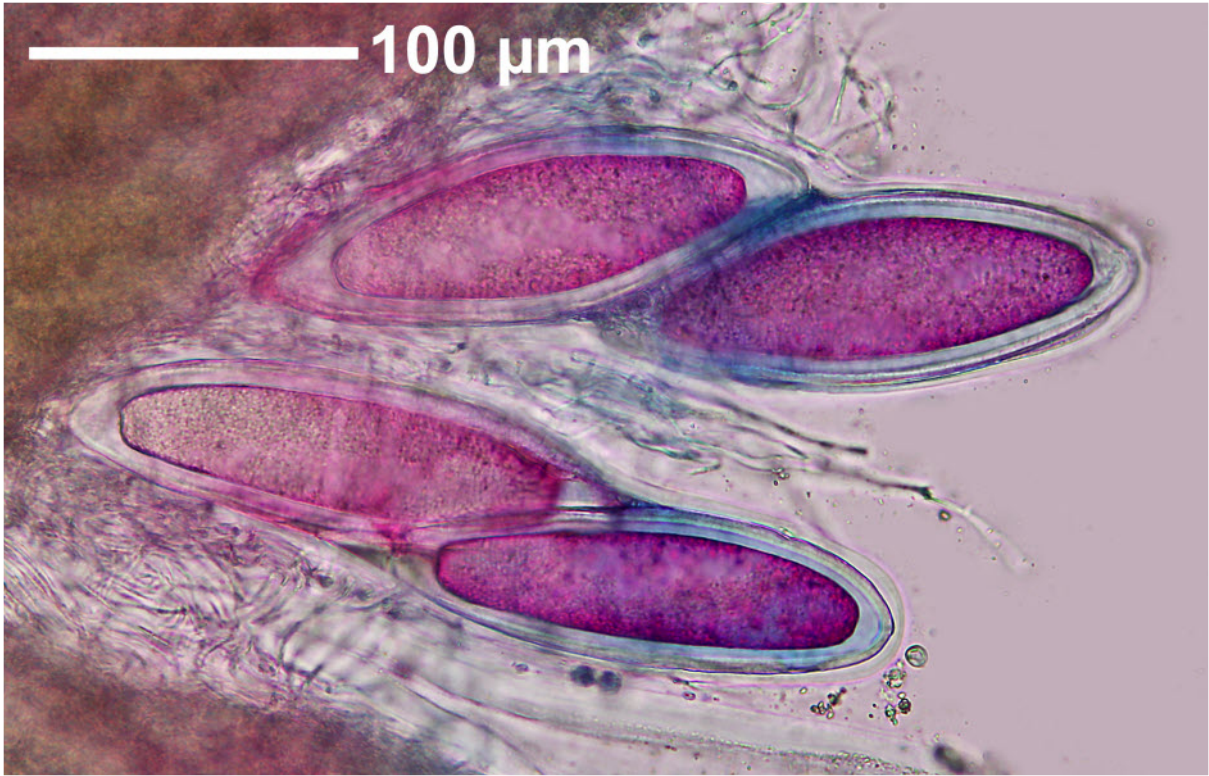


20 μm



10 μm

*Pertusaria pertusa*



*Pertusaria pertusa*