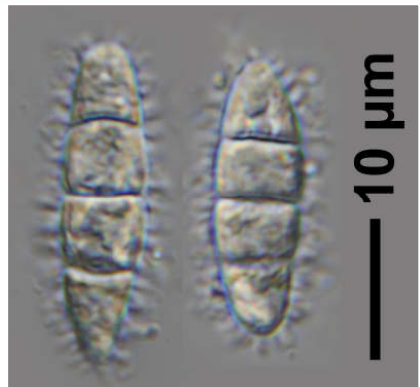
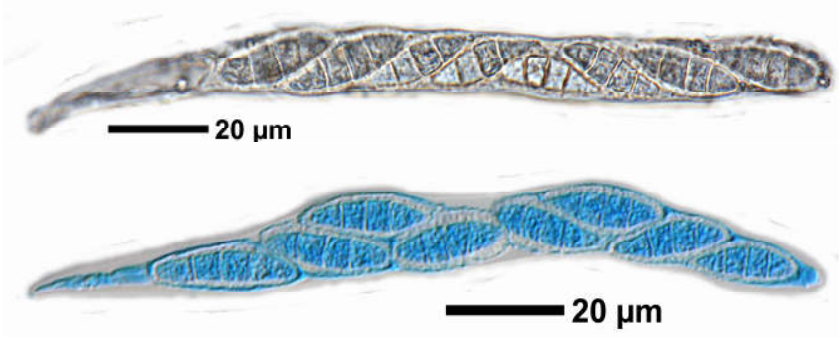
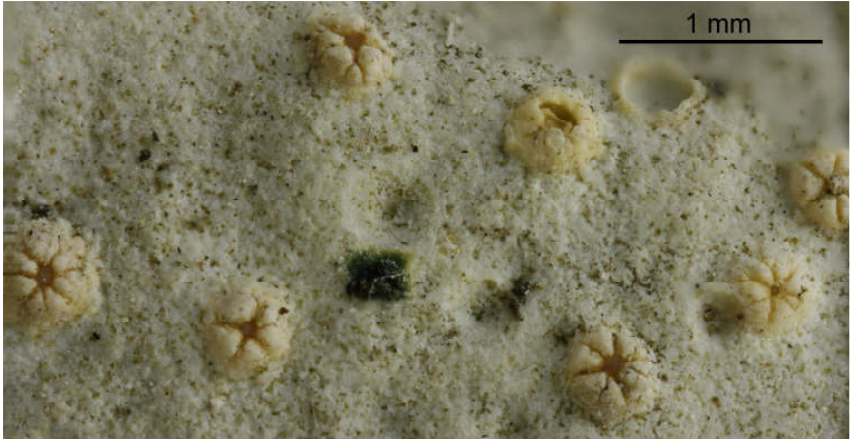
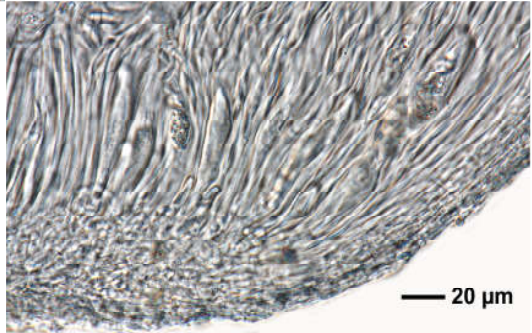
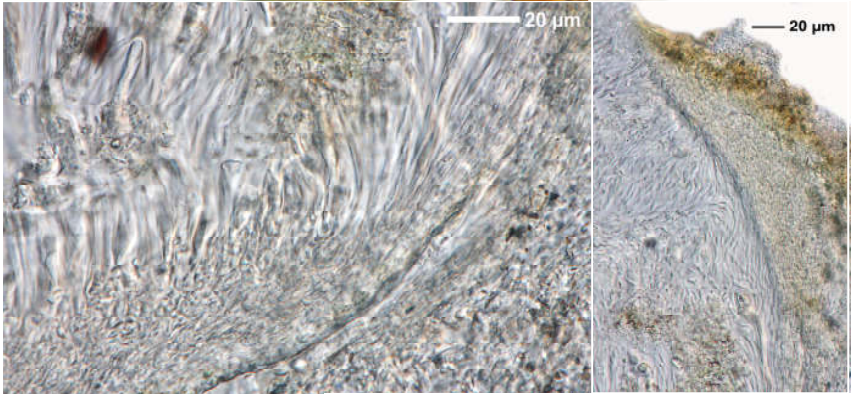
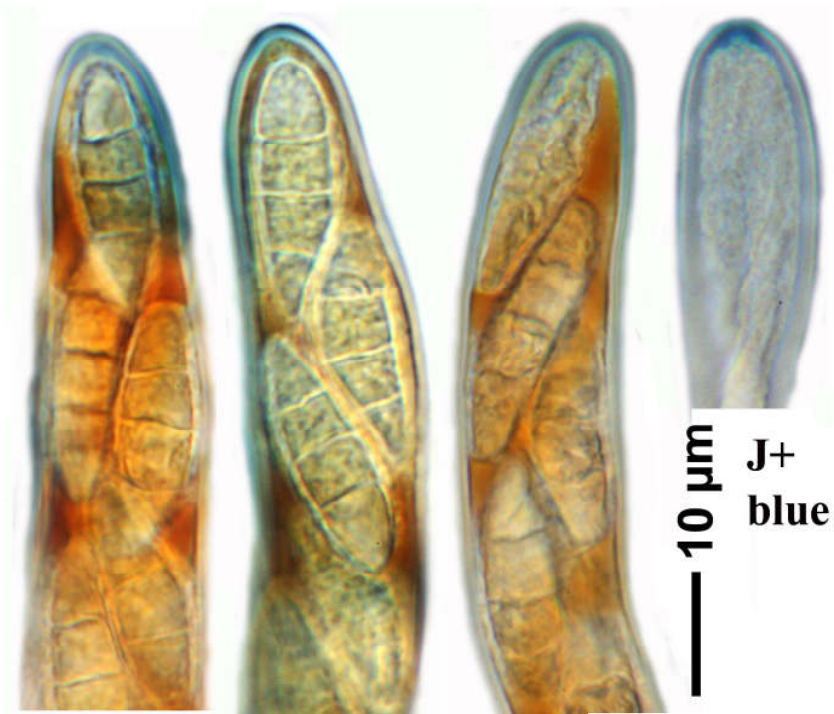


*Petractis clausa* (Hoffm.) Kremp.

Sporen 4-zellig, hyalin, mit warziger Schleimhülle, 24 x 8 µm. Paraphysen unverzweigt.

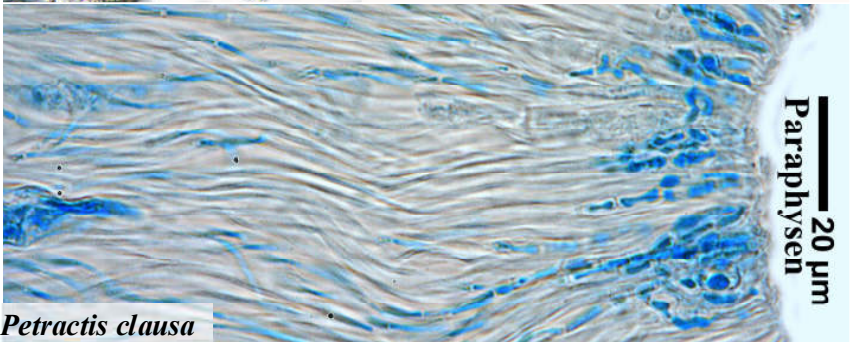
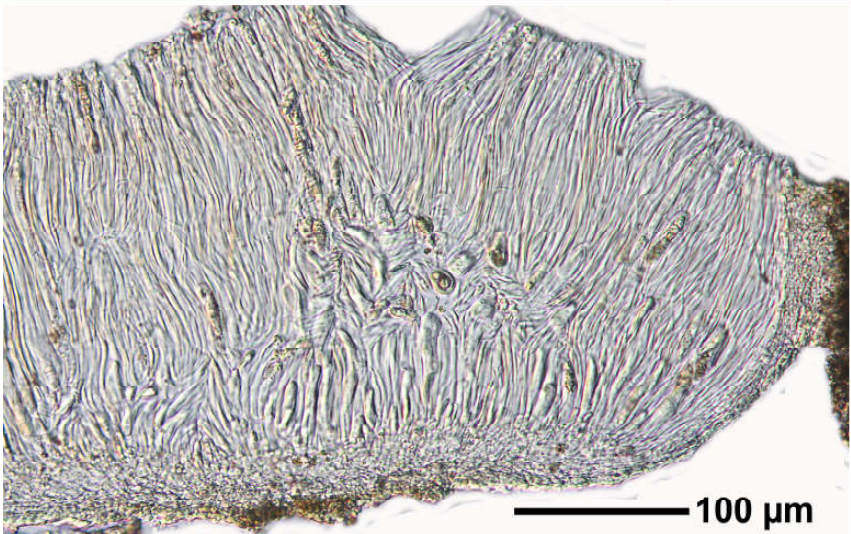
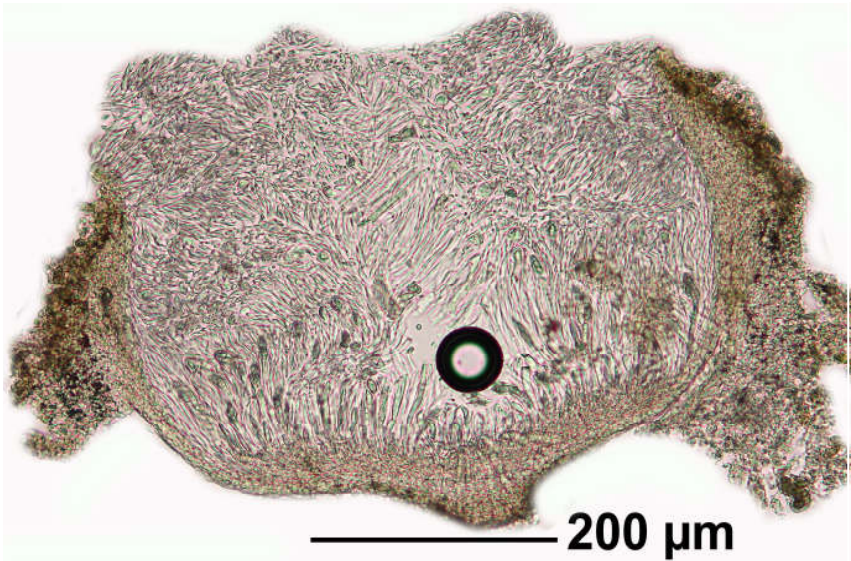
[1345], Germany, Baden-Württemberg, Schwäbische Alb, Kreis Heidenheim, an schattig-feuchten Kalkblöcken im Stubental bei Sontheim, ca. 550 m. Leg. et det. Schumm 19.10.1968.



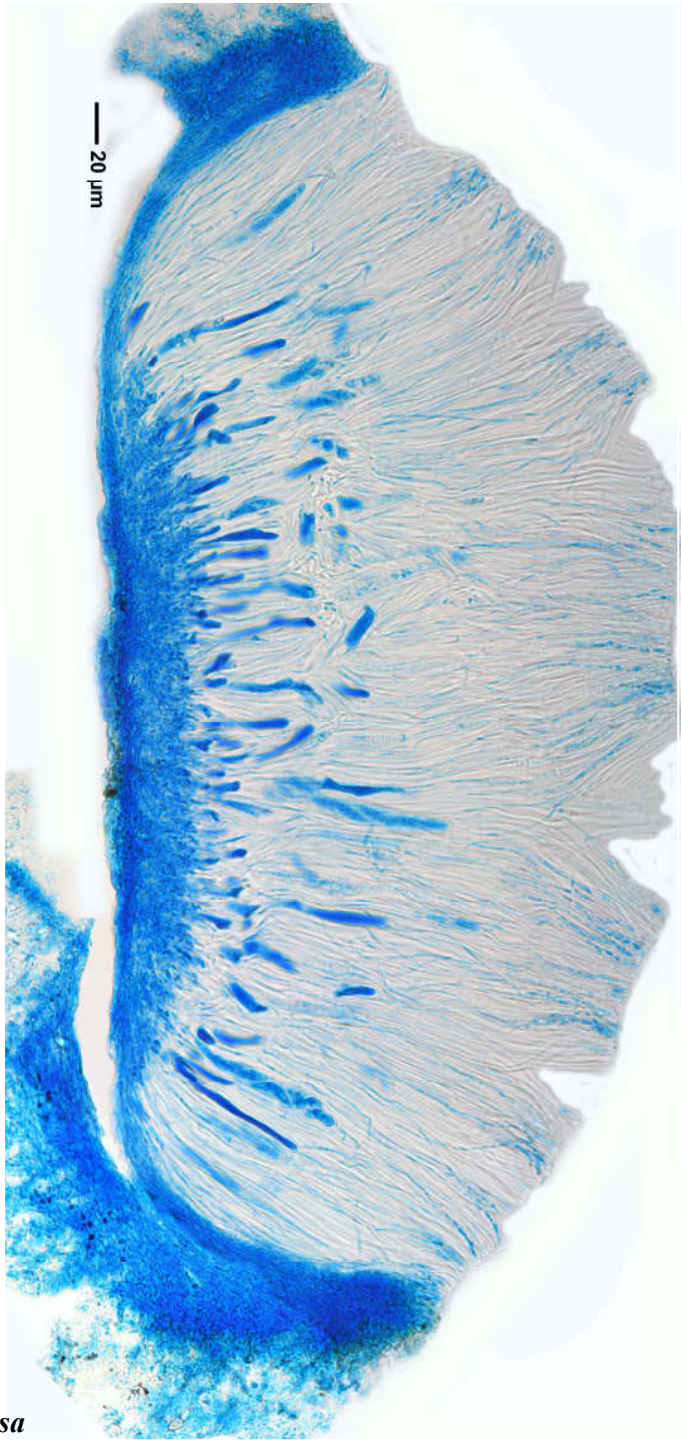


*Petractis clausa*





*Petractis clausa*



*Petractis clausa*