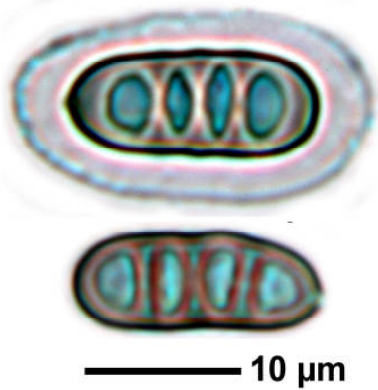
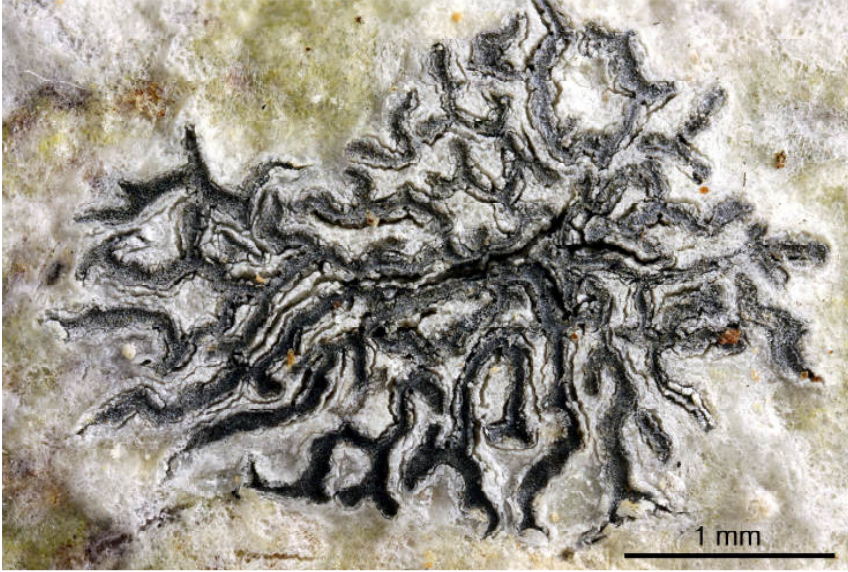
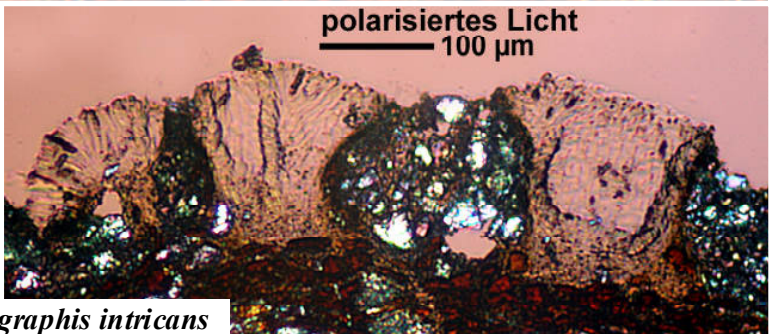
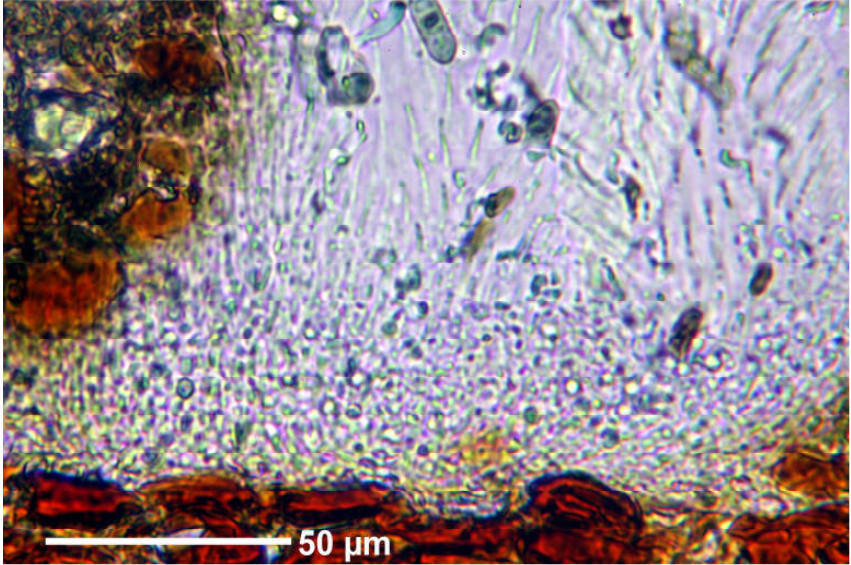
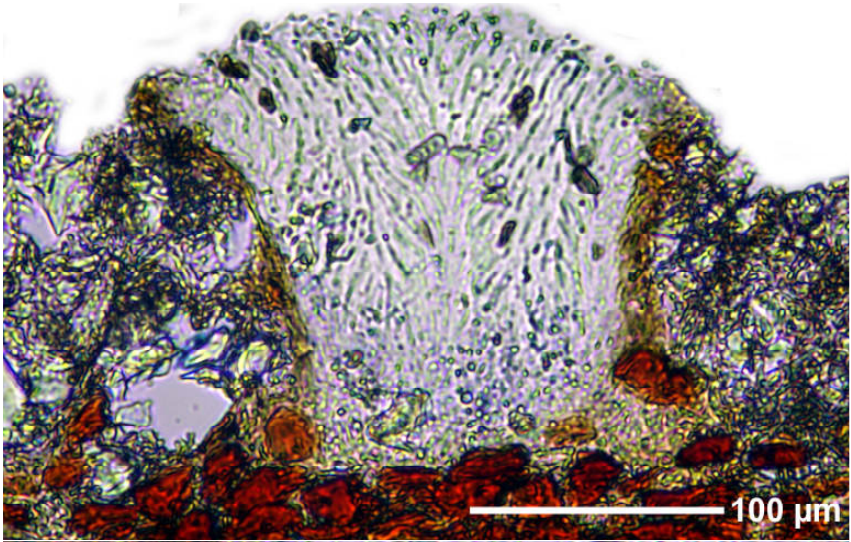


Phaeographis intricans (Nyl.) Vain.

Spores brown, 3-septate, 15-17 x 5-6.5 μm , I-. Hymenium not inspersed, c. 65 μm , I-. Excipulum yellowish, not carbonized, c. 10 μm .
Thallus with crystals. Pantropical.

[14480], Seychelles, Praslin, an der Hauptstraße beim Praslin Nationalpark, 4°19.916' S, 55°44.465' E, ca. 170 m. Leg. Schumm & Frahm 01.10.2008, det. Aptroot 2008.





Phaeographis intricans