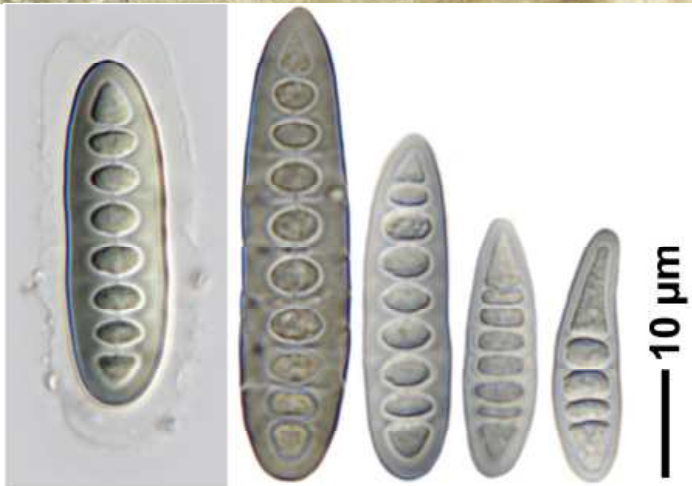
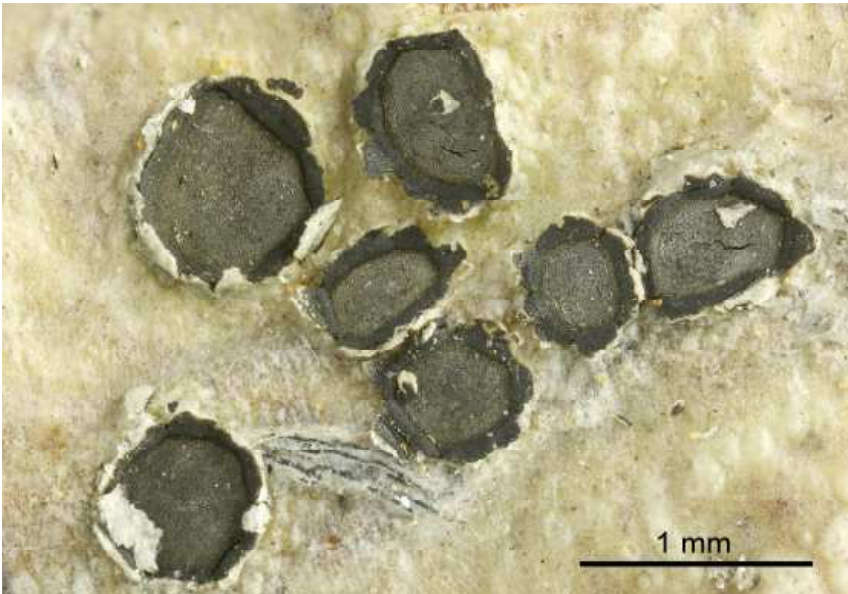


*Phaeographis lobata* (Eschw.) Müll.Arg.

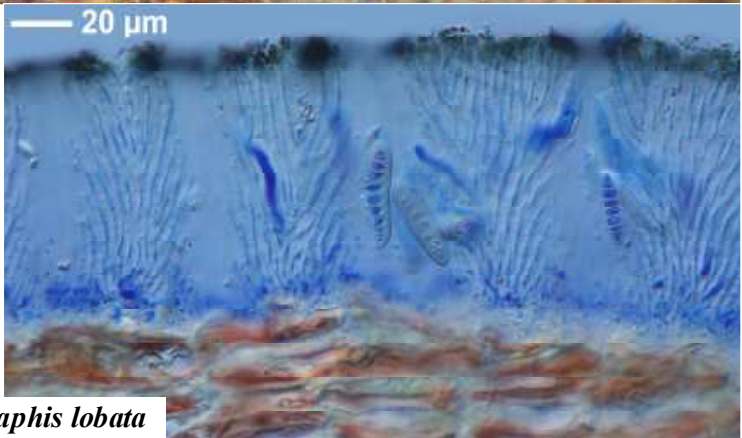
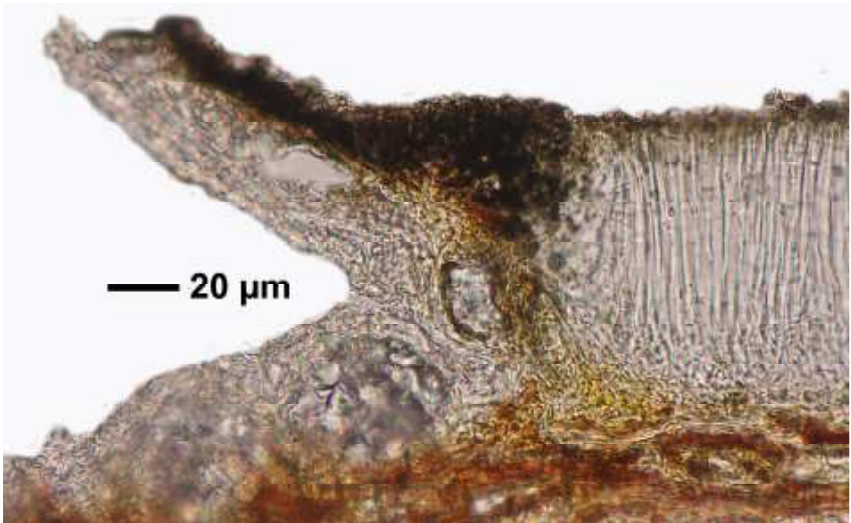
Thallus blass gelblich, glatt, etwas glänzend. Ascomata sitzend, scheibenförmig, ± kreisförmig, 0.4-0.8 mm. Hymenium inspers, J-, K&J+ ganz zart bläulich. Sporen grau, 8/Ascus, 8-10 zellig, 34-48 x 10-11 µm, mit ca. 3 µm breitem Halo.

[15446], La Reunion, an der Straße von St-Andre nach Hell Bourg am Eingang zum Cirque de Salazie. 21,00292° S, 55,60452° E, 200 m. Leg. Schumm & Frahm 13.09.2009, det. Aptroot 2011.





*Phaeographis lobata*



*Phaeographis lobata*

