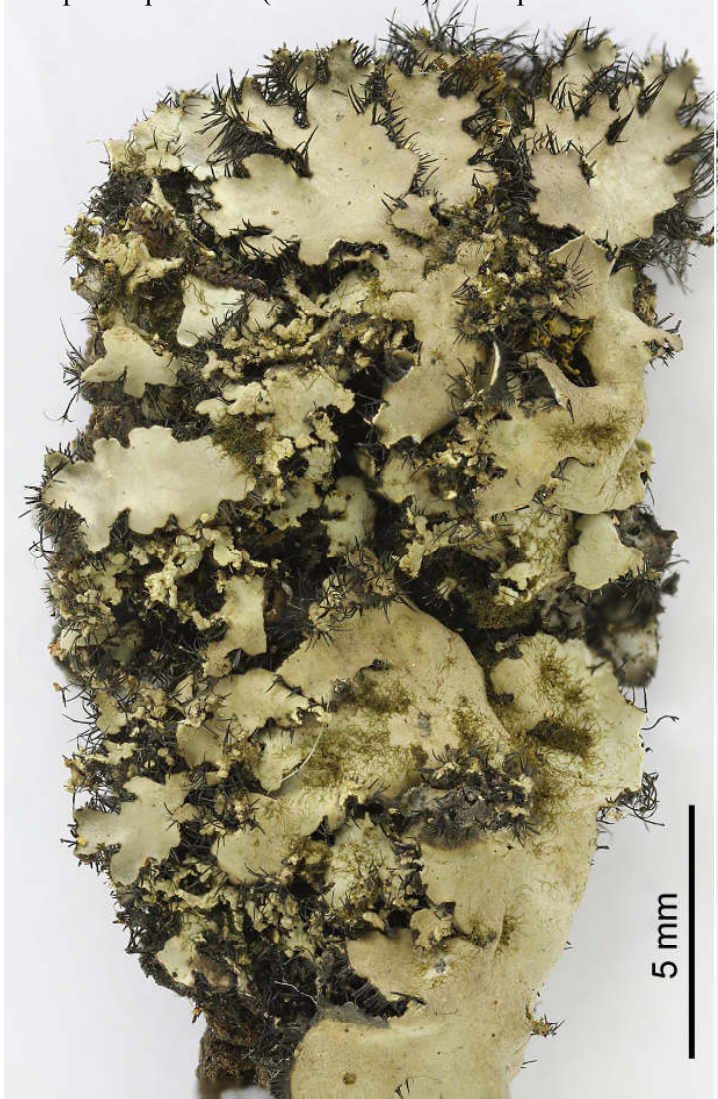
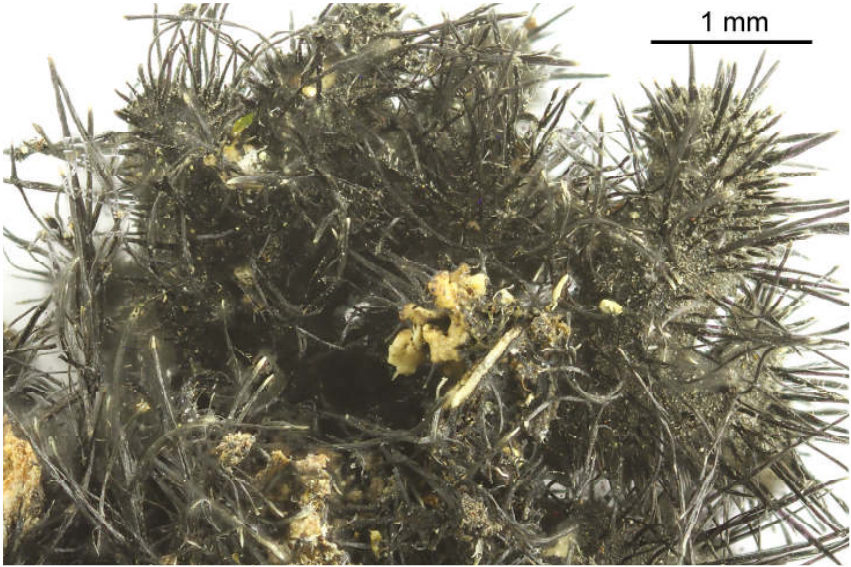


Phaeophyscia primaria (Poelt) Trass
[= *Physcia hispidula* ssp. *primaria* Poelt]

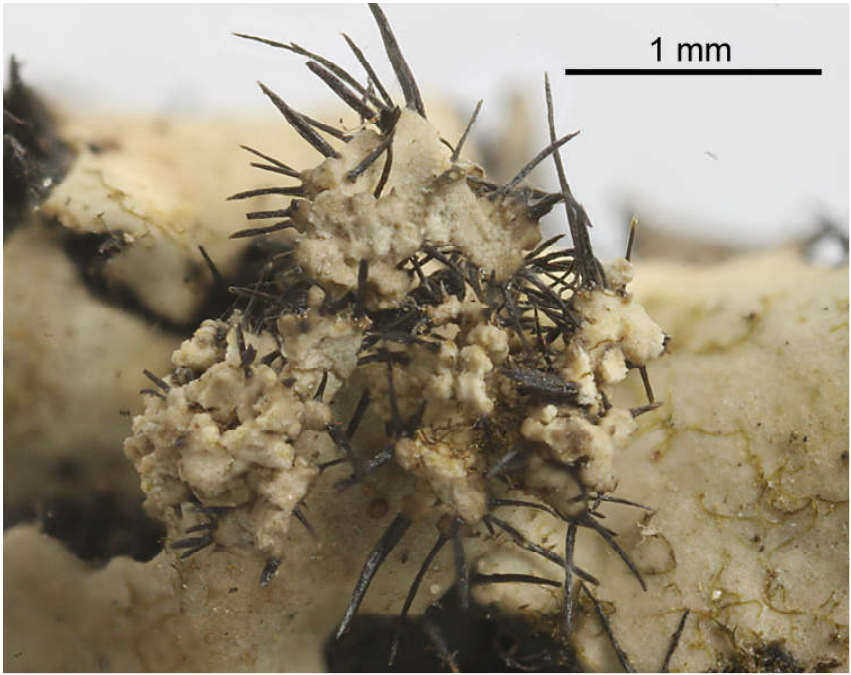
Lobes 0.7-1.5 mm wide, margins with black cilia, up to 0.75 mm long. Lower surface black, with black, simple rhizinae. Soralia and isidia are absent. Medulla white. Thallus and medulla K-, C-, KC-, P-, TLC nil.

[11773], Nord-Thailand, Prov. Chiang Mai, Chiang Mai, Doi Suthep, Monsun-Regenwald beim Phu-Ping-Palast, epiphytisch, 1300 m. Leg. Schäfer-Verwimp 05. April 2004 (Nr. 23706/A), det. Aptroot.





Phaeophyscia hispidula



Phaeophyscia hispidula



Phaeophyscia hispidula