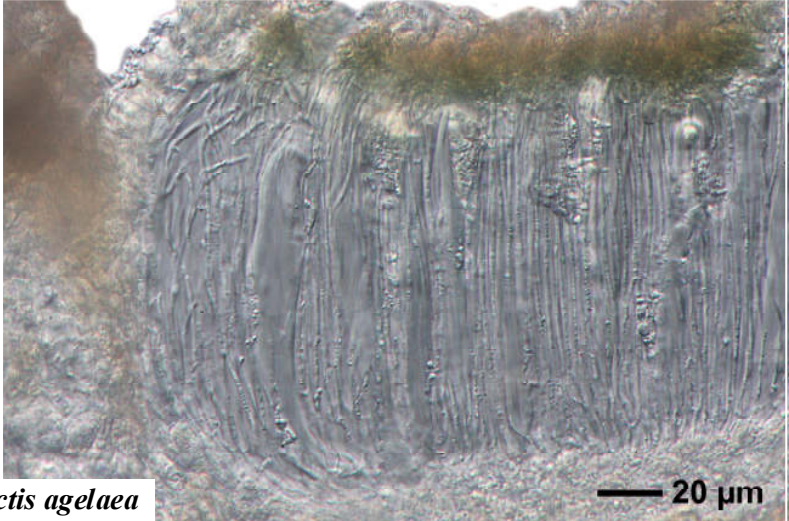
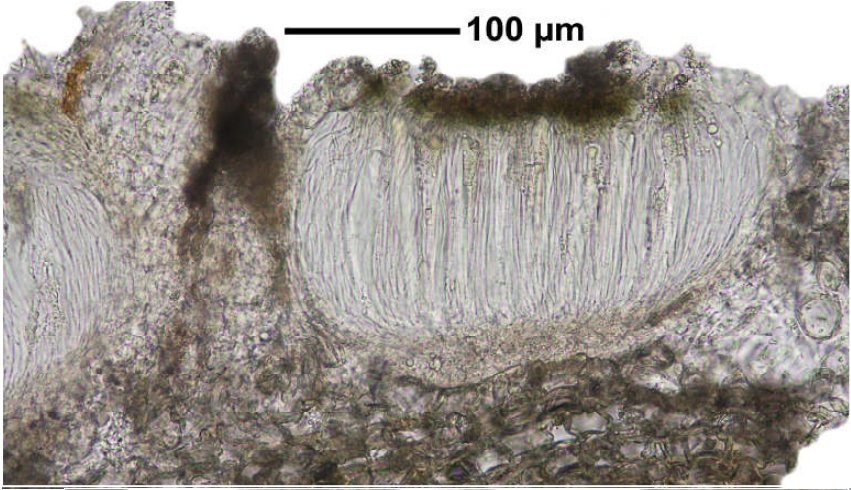


*Phlyctis agelaea* (Ach.) Flotow

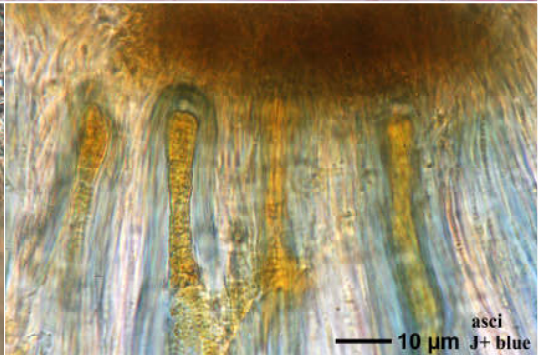
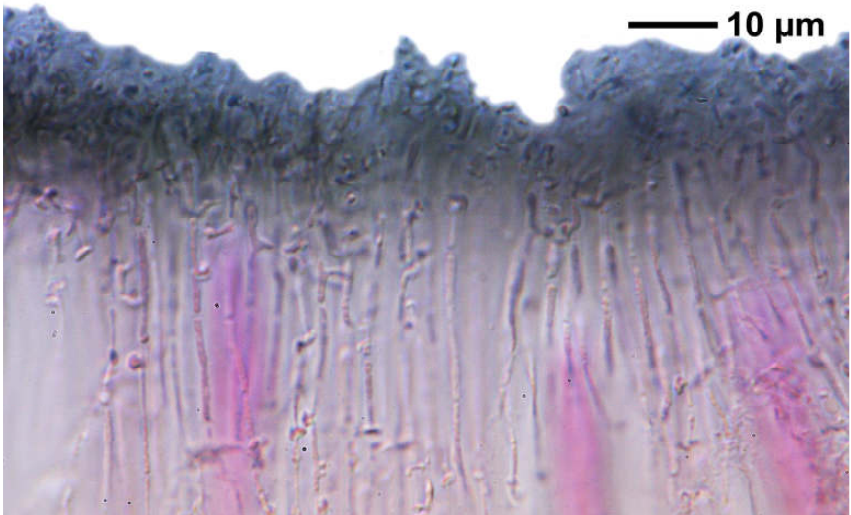
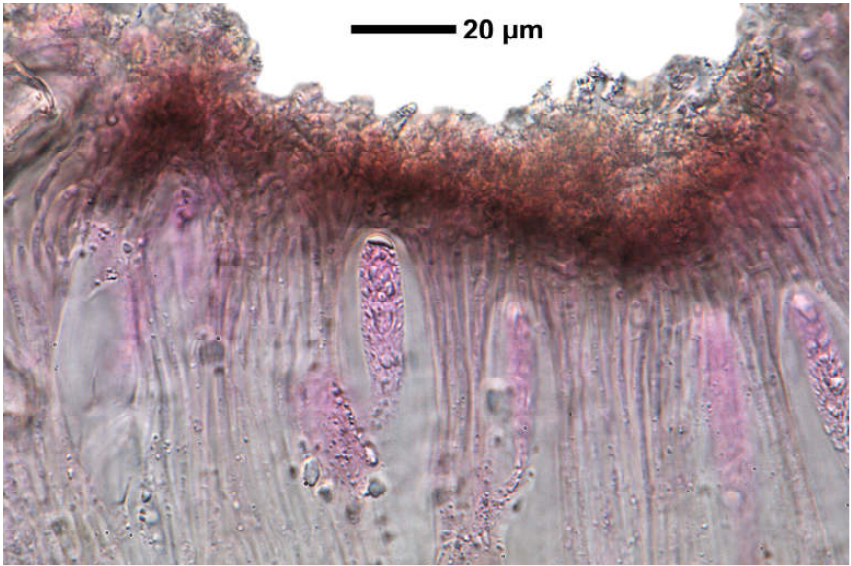
Thallus ohne Sorale aber mit pustelförmigen, sorediösen Apothecien. Sporen erst hyalin dann braun, muriform. Chemie: Thallus K+ gelb, C-, KC+ orange, P+ gelb (Norstictinsäure)

[17975], Germany, Baden-Württemberg, Kreis Göppingen, zwischen Nassach und Oberwälden, Waldweg zwischen Stärerberg und Gaibhalden, 48.75491° N, 9.54289° E, 377 m, an Esche. Leg. Schumm 03.04.2012, det Schumm 2012.





*Phlyctis agelaea*



*Phlyctis agelaea*