

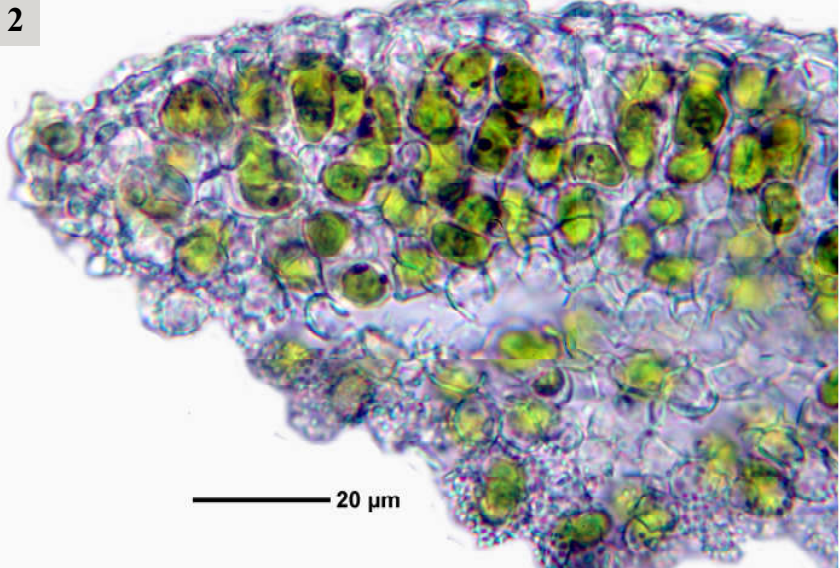
*Phyllopetula corticola* (Büdel & R.Sant.) Kalb

The illustrations show a chimera of the cyanobacteria-containing *Phyllopetula corticola* which bears folioles with green algae. 2: sections through chimera, 3: section through cyanobacteria-containing thallus, 4: soredia with green algae and papillose cells. Pantropical. Lit. Aprott & Schumm (2010, Lichenologist 42(3): 307-310)

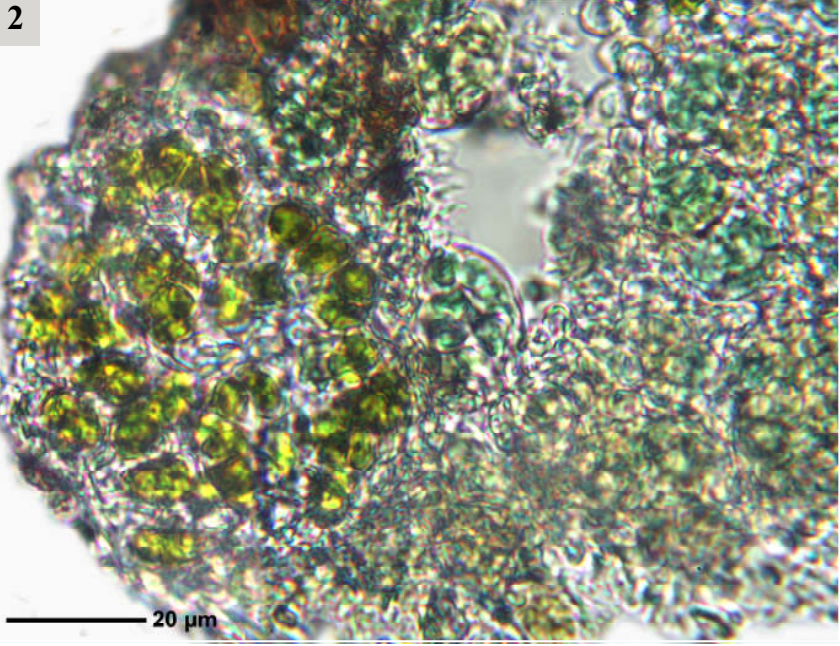
[7349], Philippinen, Negros, Prov. Negros Oriental, Dumaguete, N 9°18.620, E 123°18.475, 6 m. Leg. Schumm 08.08.2000, det. Aprott 2009.



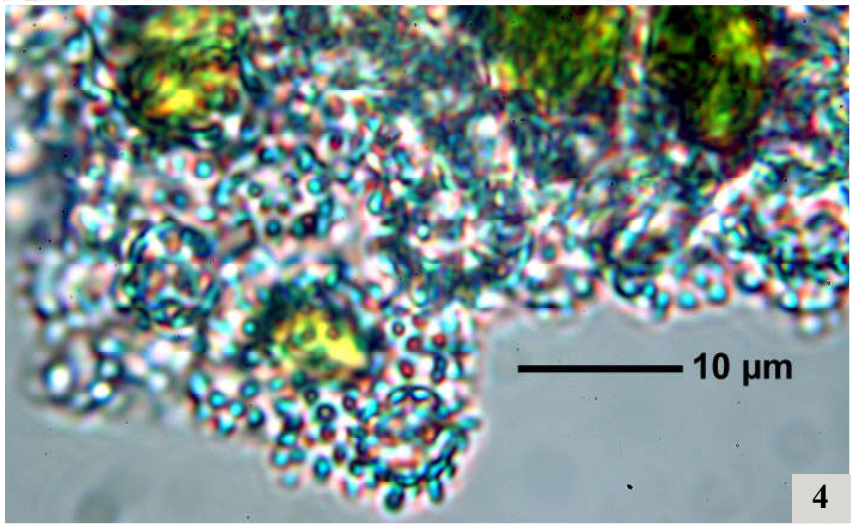
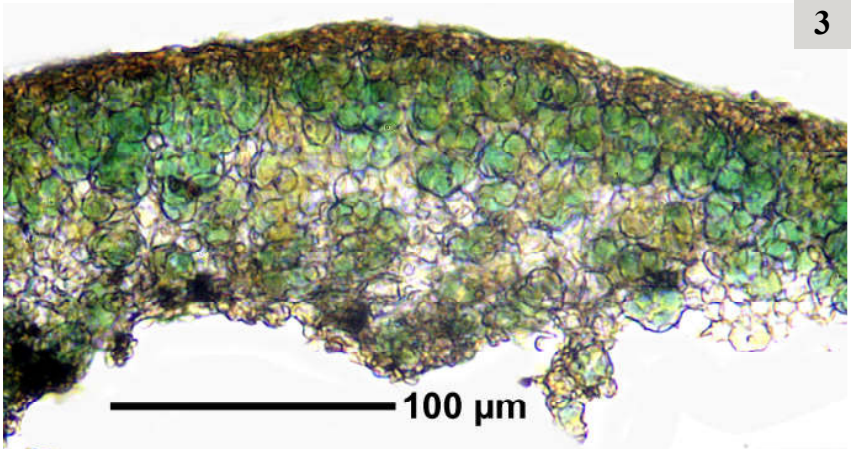
2



2



*Phyllopeltula corticola*



*Phyllopeltula corticola*