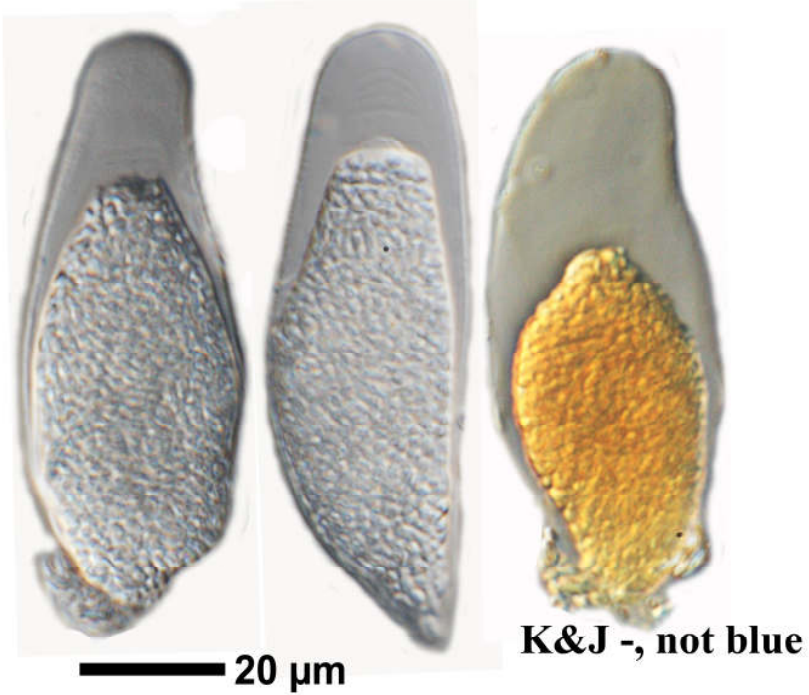
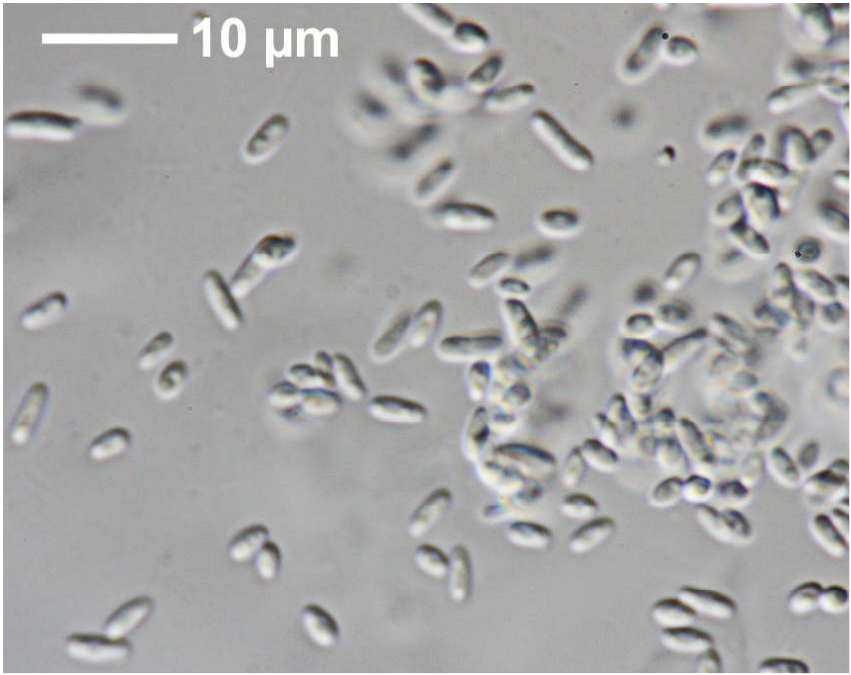


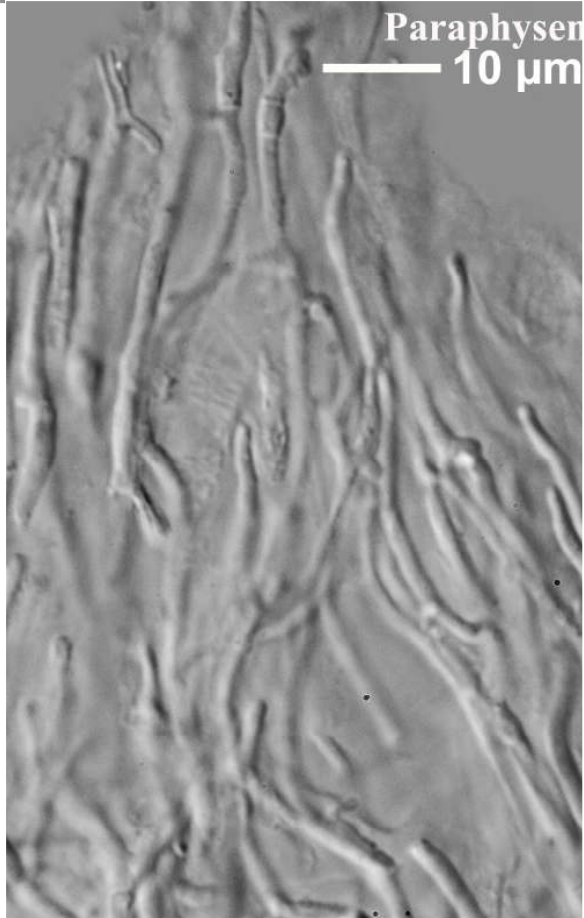
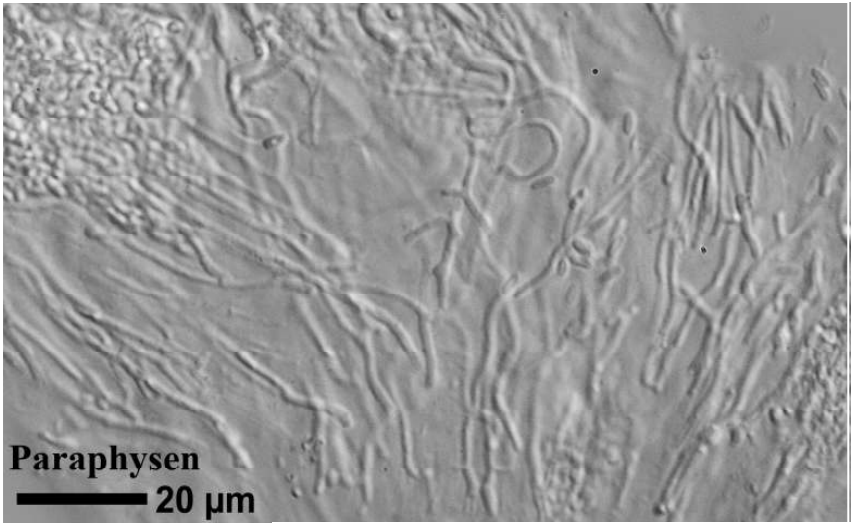
Polysporina simplex (Dav.) Nyl.

Paraphysen verzweigt mit Anastomosen. Sporen 1-zellig, hyalin, ca. 100, 4.5-5.2 x 1.5 μm . Apothecien kohlig, Scheibe rau-warzig. Epithelium schwarz. Hymenialgallerte J+ blau, Asci J-.

[4280], Schweiz, Kanton Graubünden, Unterengadin, Lavin auf Granitblöcken oberhalb des Hotels Crusch Alba, ca. 1460 m. Leg. et det. Schumm 25.08.1995.



Polysporina simplex



Polysporina simplex