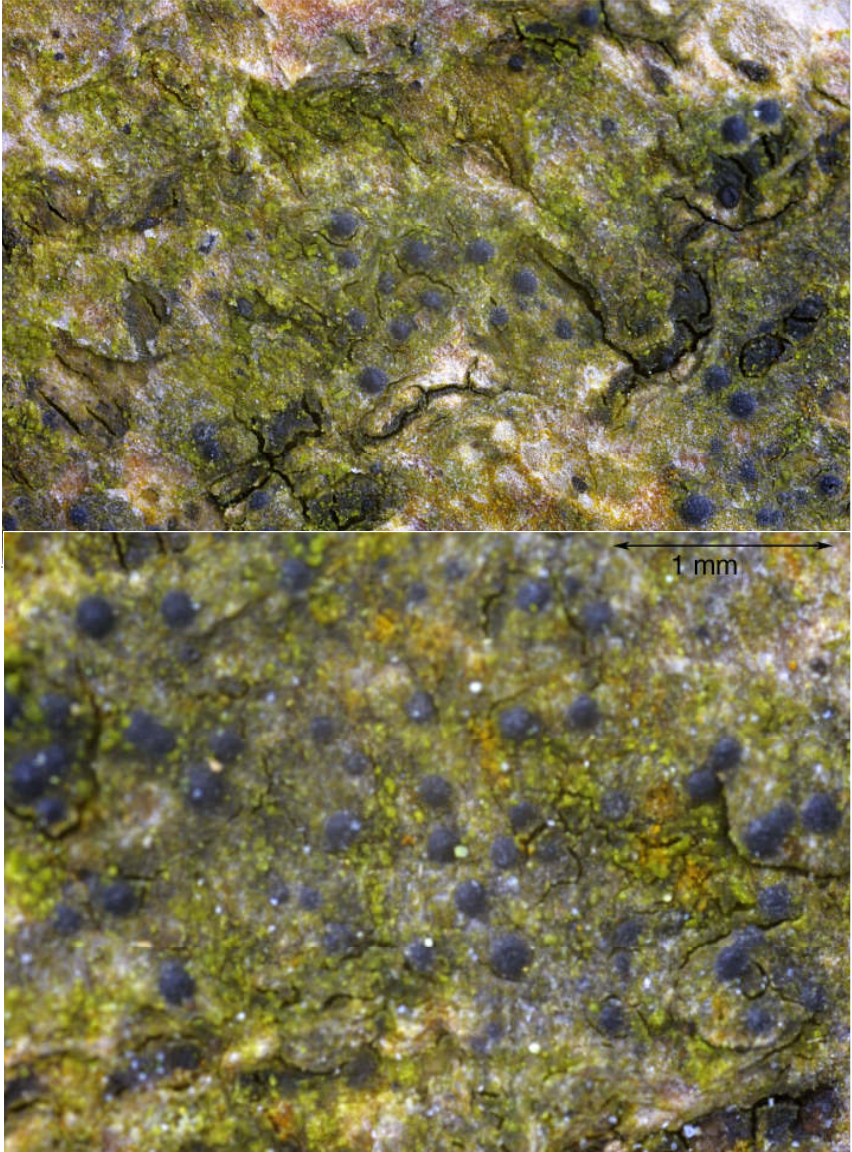
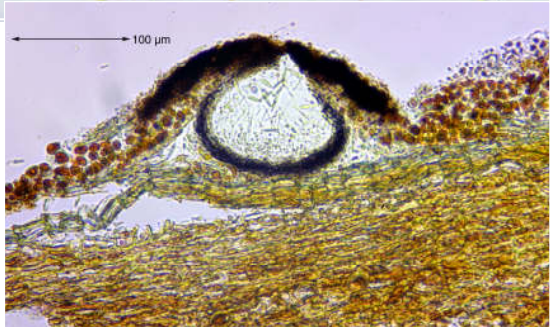
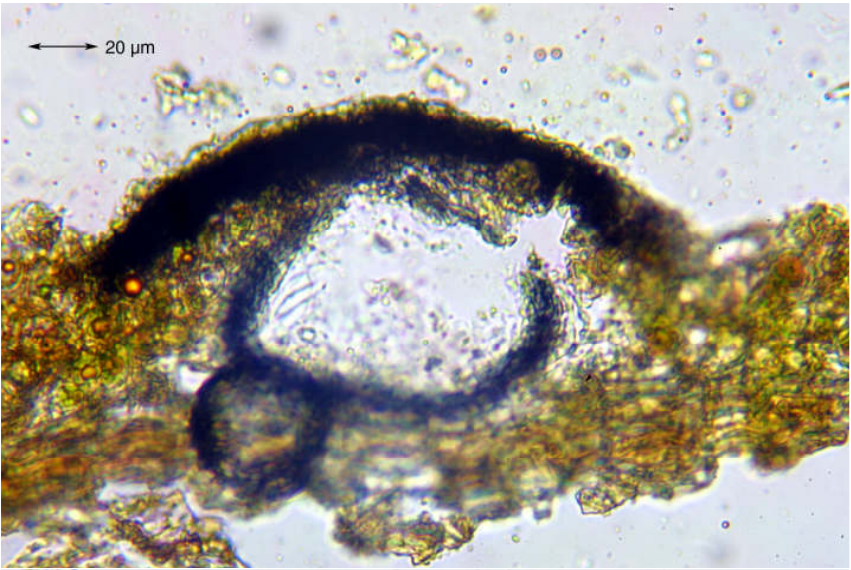


Porina aenea (Wallr.) Zahlbr.

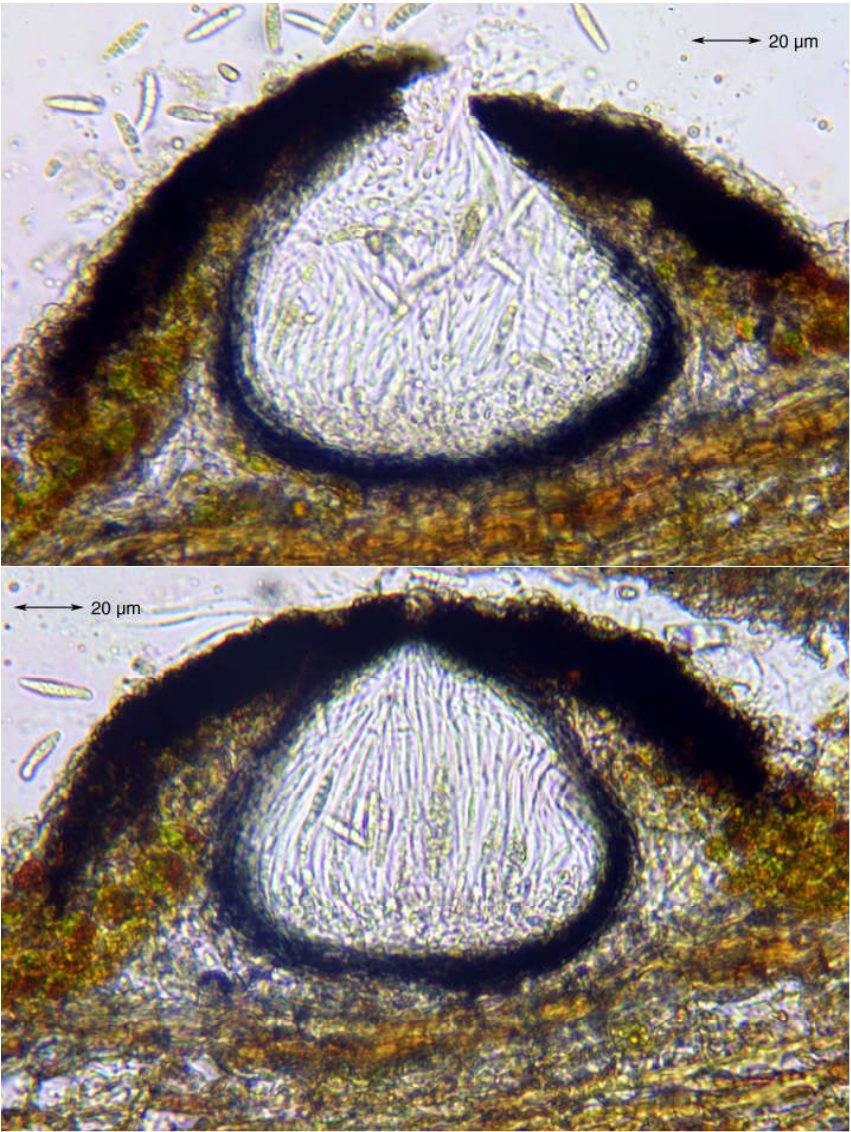
Sporen 4(-5) zellig, 16,8 x 4,4 18,5 x 3,3 μm ; Paraphysen unverzweigt.

[13151], GERMANY, Baden-Württemberg, Kreis Göppingen, nördlich von Bad Ditzgenbach, am Weg von Auendorf (48°36.907'N, 9°41.286'E, 663 m) zum Galgenberg (714 m), TK 7424. Leg. Schumm 06.04.2007, det. Schumm 07.04.2007.

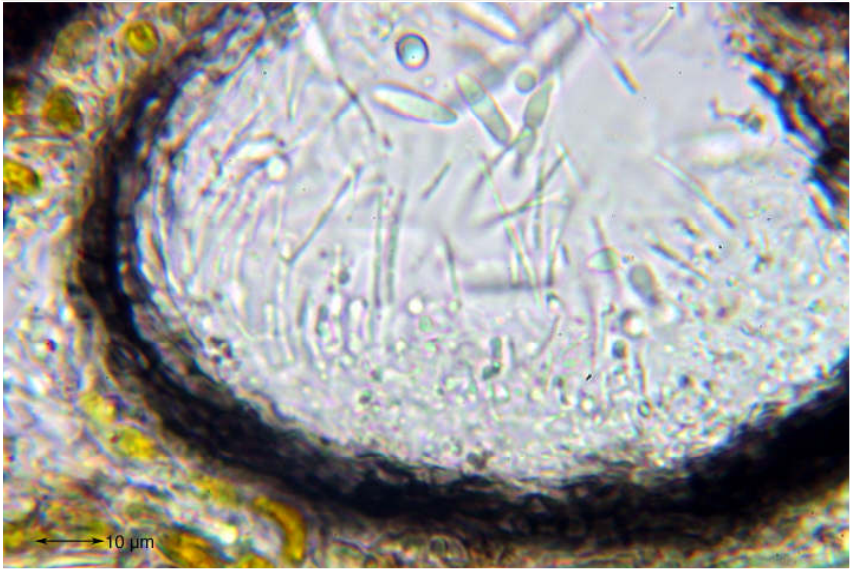
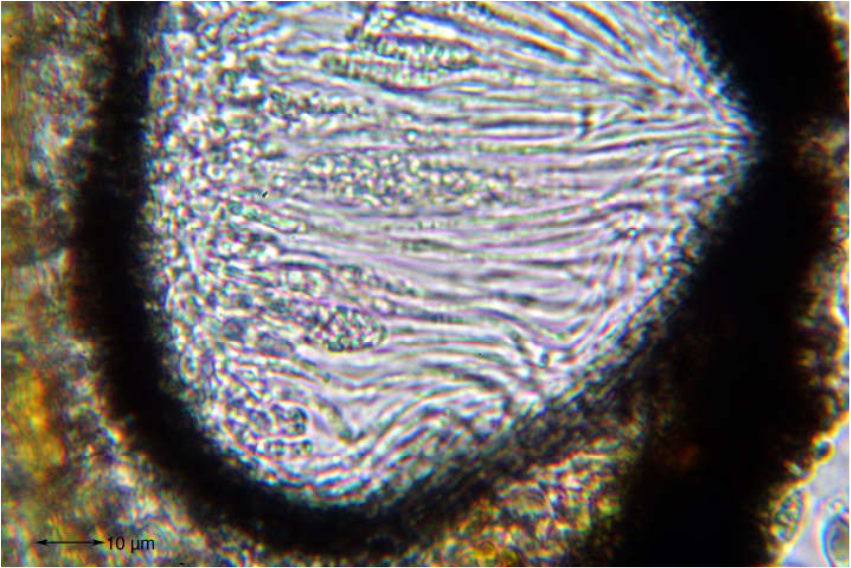


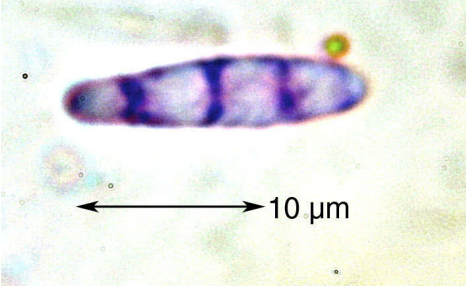


Porina aenea

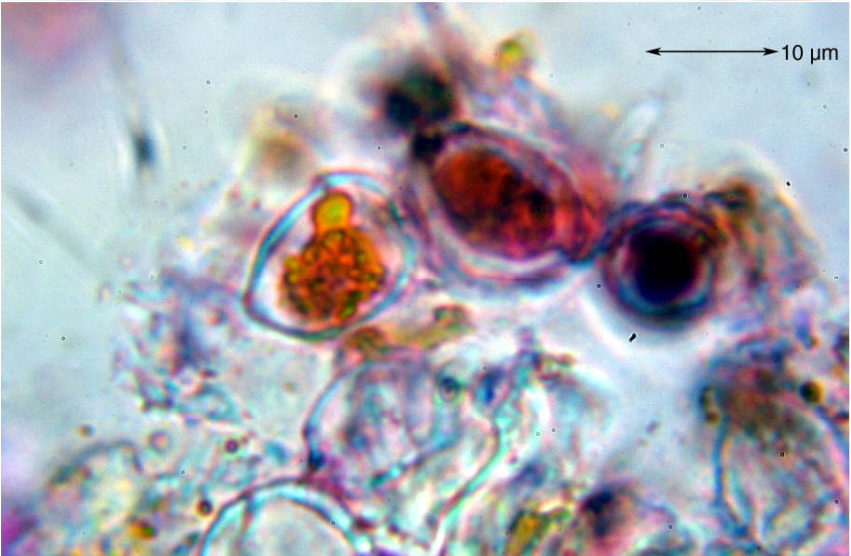
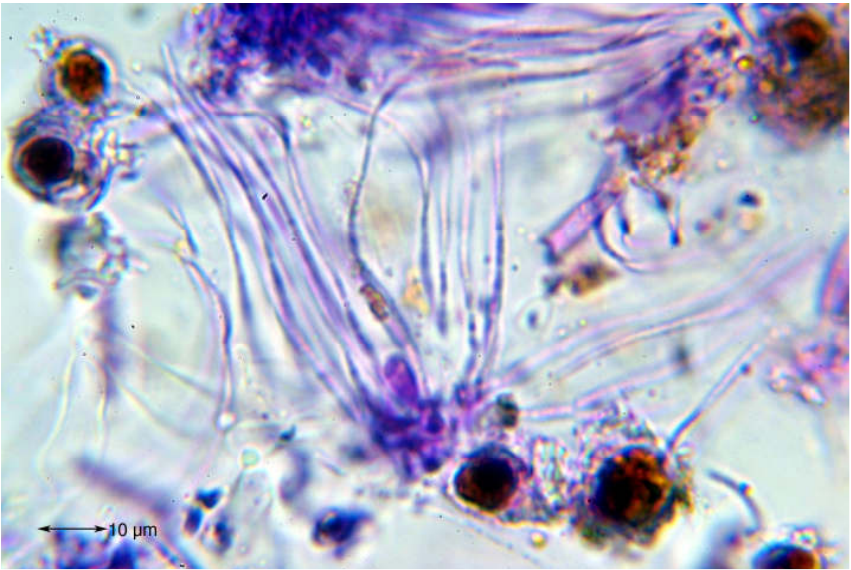


Porina aenea





Porina aenea



Porina aenea