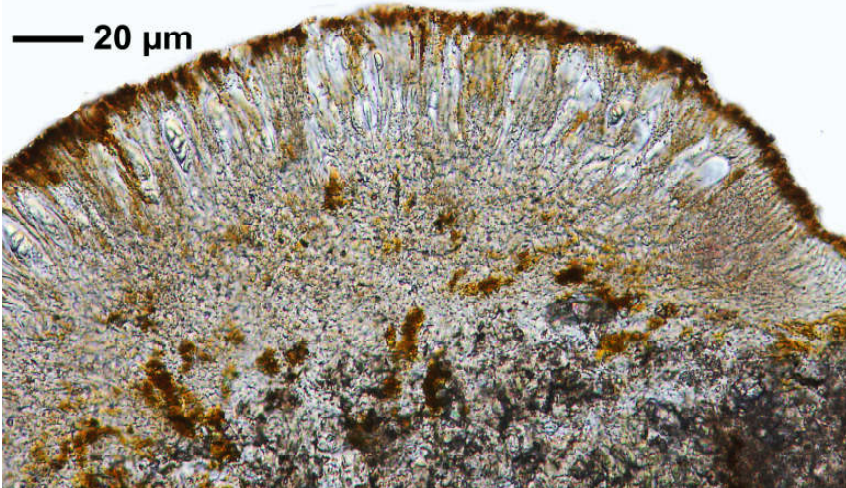
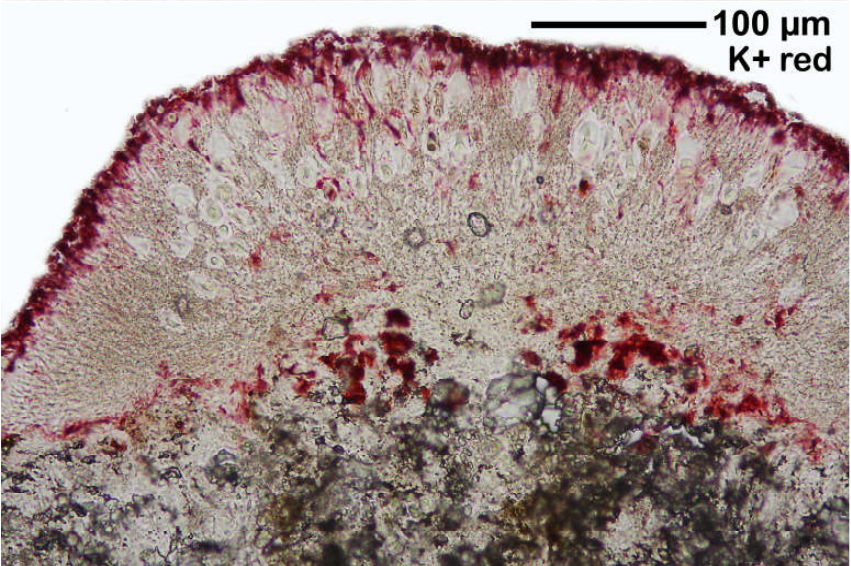
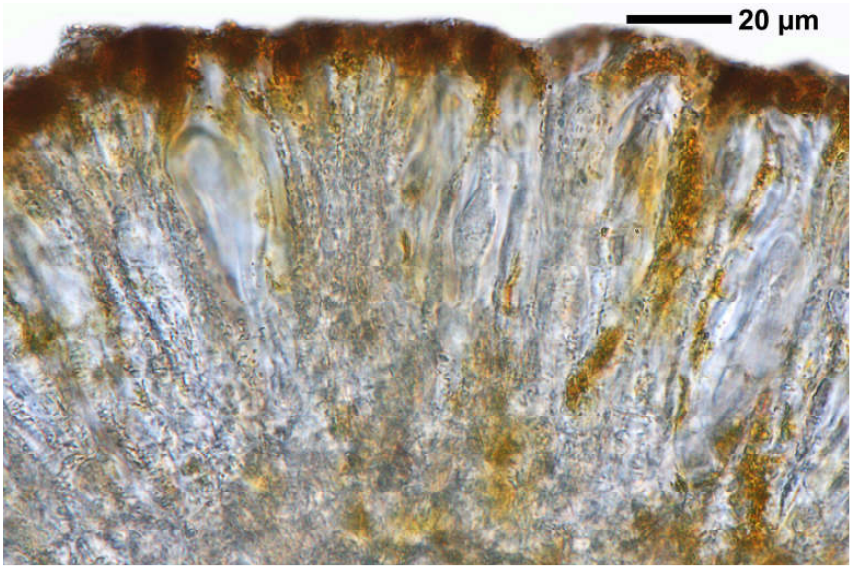


Protoblastenia calva (Dicks.) Steiner

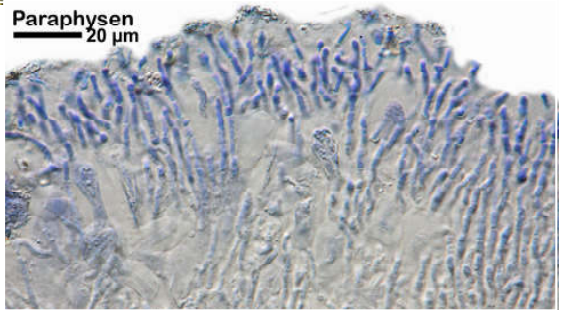
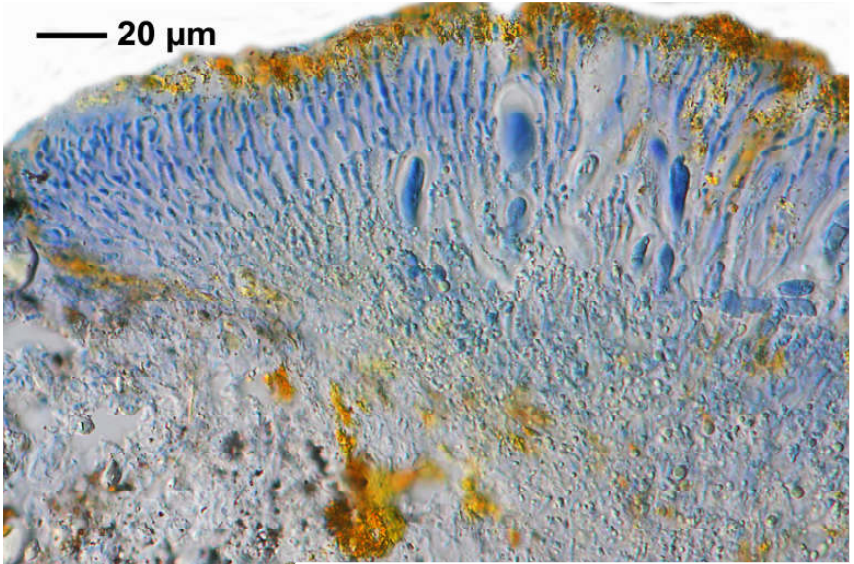
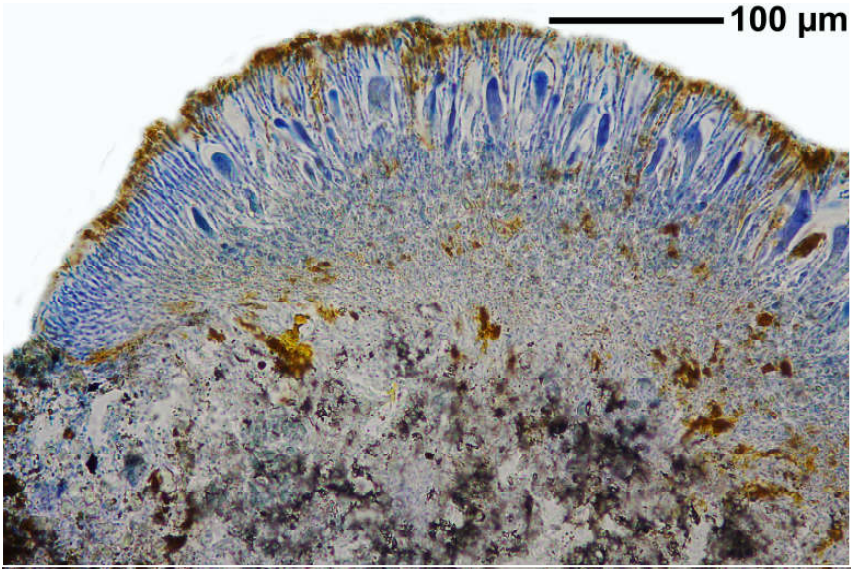
Thallus endolithisch, weißlich, mit ± mehligter Oberfläche. Apothecien tieforange, K+ rot, hochgewölbt, fast halbkugelig bis 1,5(-2) mm breit, aufsitzend. Hymenium inspers. Sporen hyalin, 1-zellig, 8/Ascus, 9-15 x 5-9 μ m.

[1400], Germany, Baden-Württemberg, Kreis Heidenheim, im Stubental bei Sontheim, Kalblöcke in Steppenheidehängen, ca. 650 m. Leg. et det. Schumm 10.08.1963.

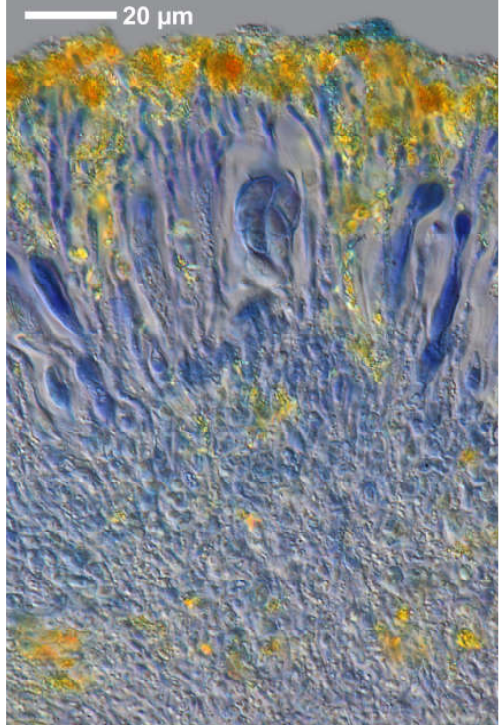
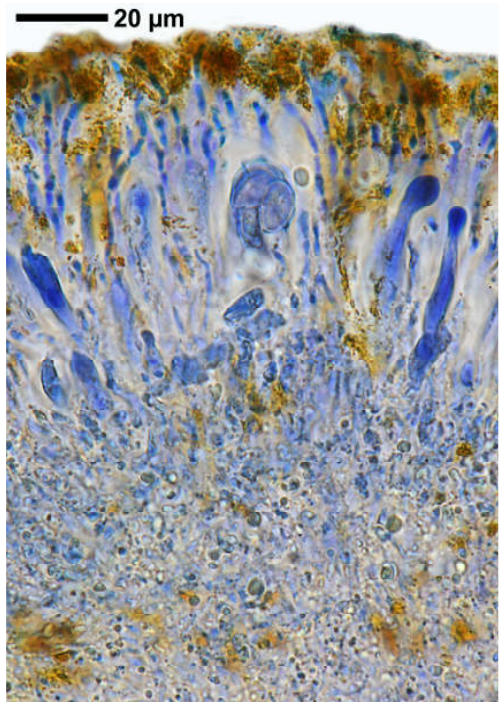




Protoblastenia calva



Protoblastenia calva



Protoblastenia calva