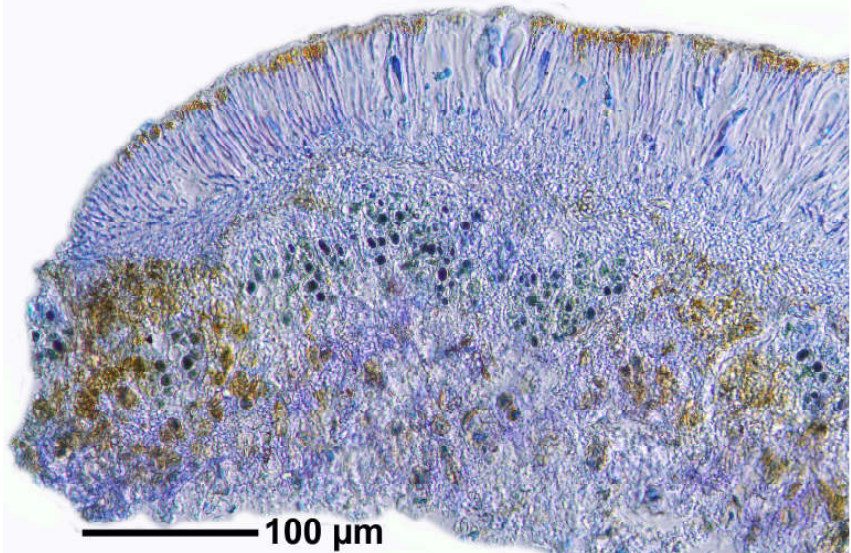
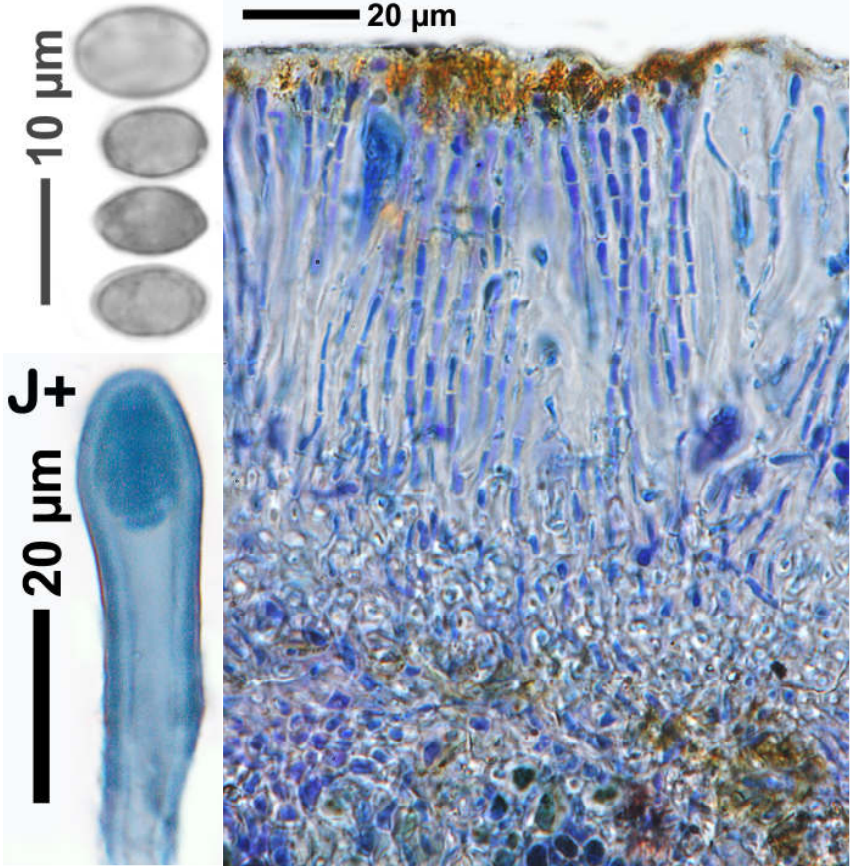
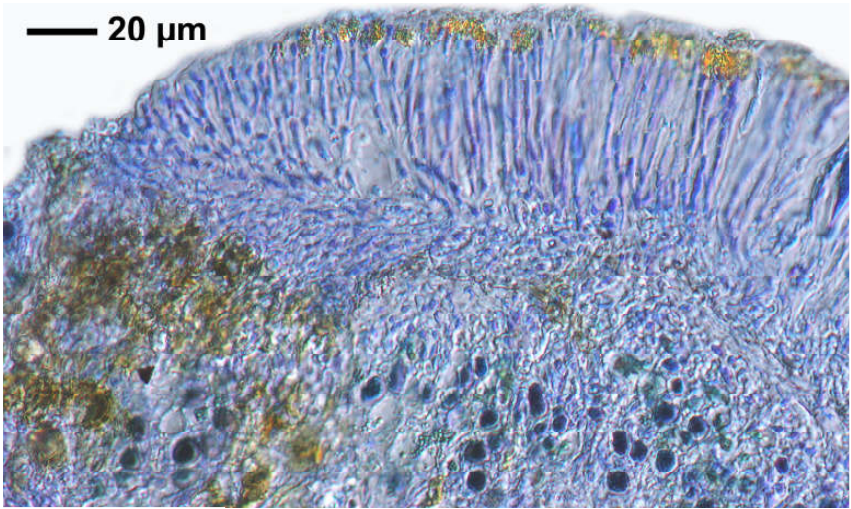


Protoblastenia rupestris (Scop.) J.Steiner

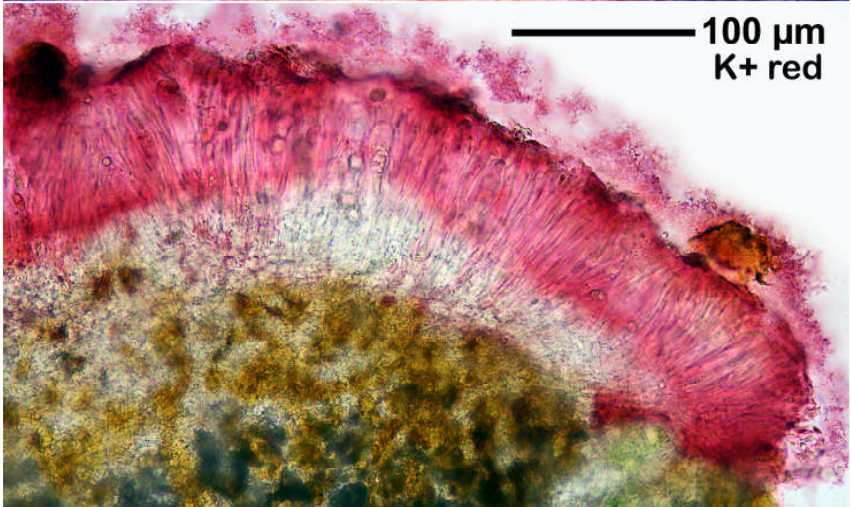
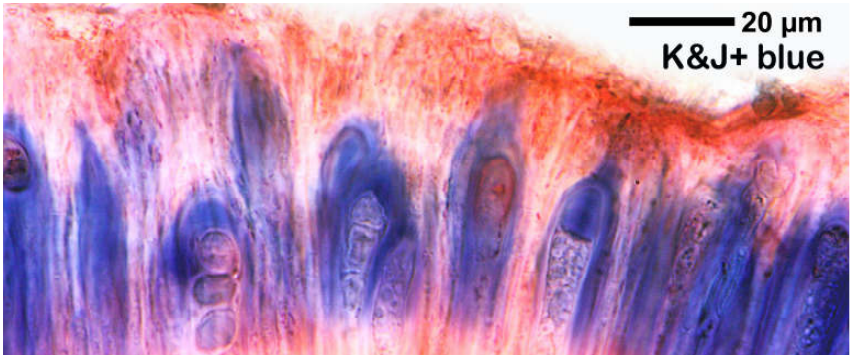
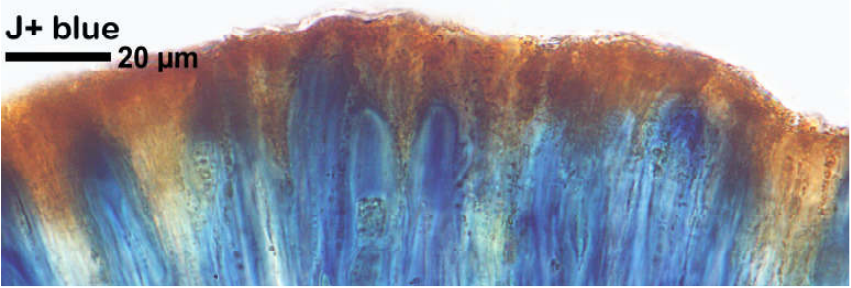
Thallus graugrünlich, oliv, gelblichgrau, körnig bis rissig-areoliert. Apothecien orange, orangebraun oder rotorange, bis 1 mm breit, gewölbt, randlos, K+ dunkelrot. Hypothecium farblos bis gelblich. Sporen hyalin, 1-zellig, 8/Ascus, 8-17 x 5-8 μm . Chemie: Thallus K-, C-, P-; Apothecien mit Anthrachinonen, K+ rot.

[16505], Germany, Baden-Württemberg, Kreis Göppingen, Gosbach-Bad Ditzenbach, Tierstein, 48,57461° N, 9,68471° E, 737 m, auf Kalkfelsen am Albrand. Leg. et det. Schumm 20.06.2010





Protoblastenia rupestris



Protoblastenia rupestris