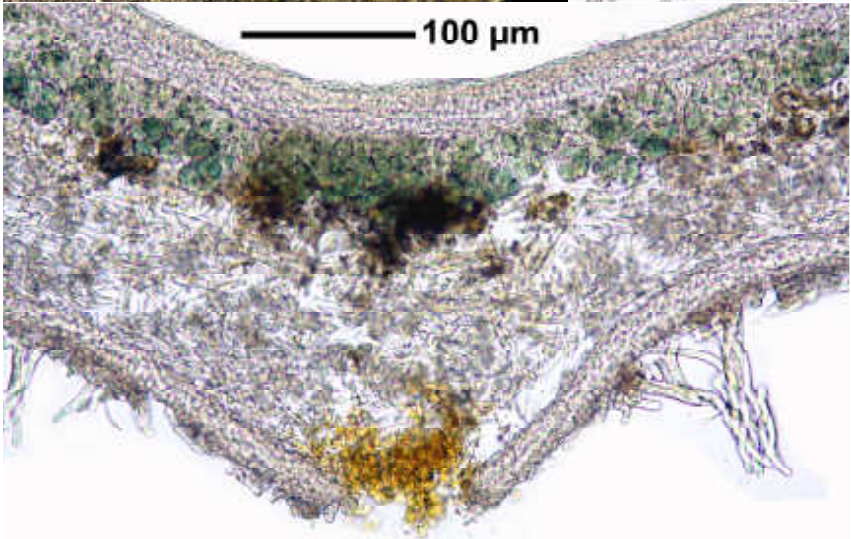
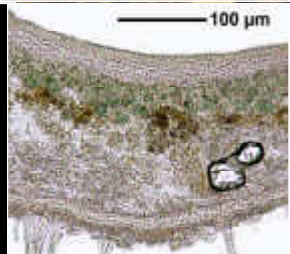
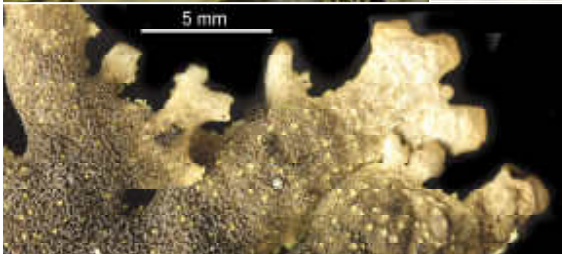
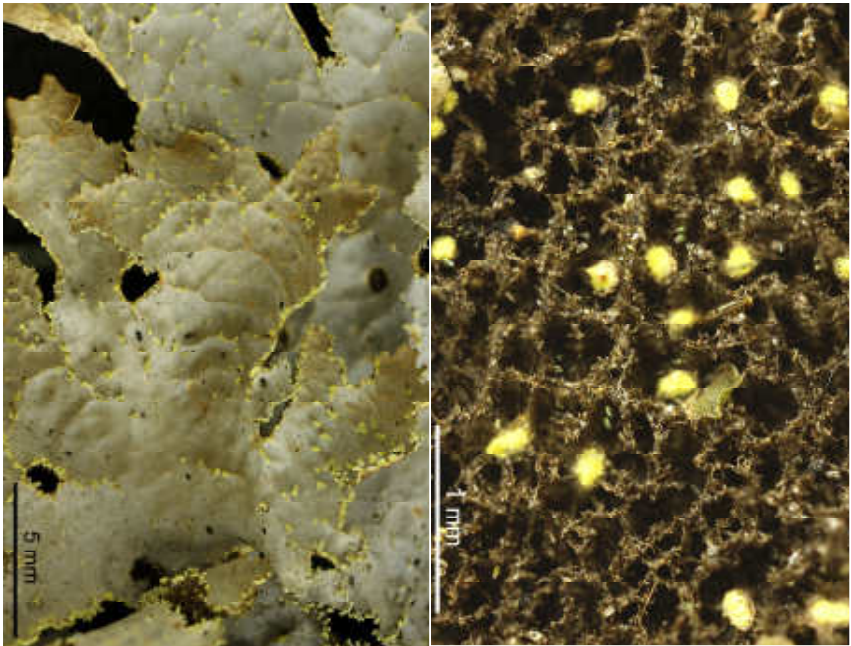


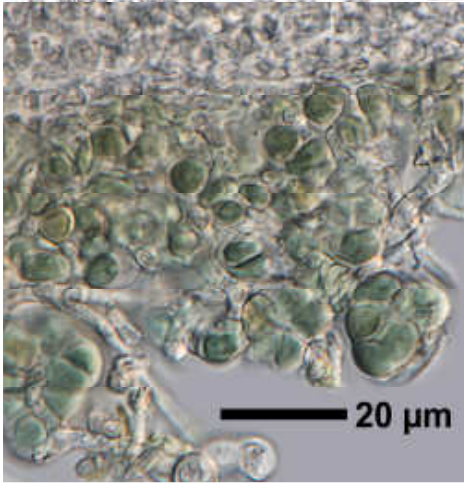
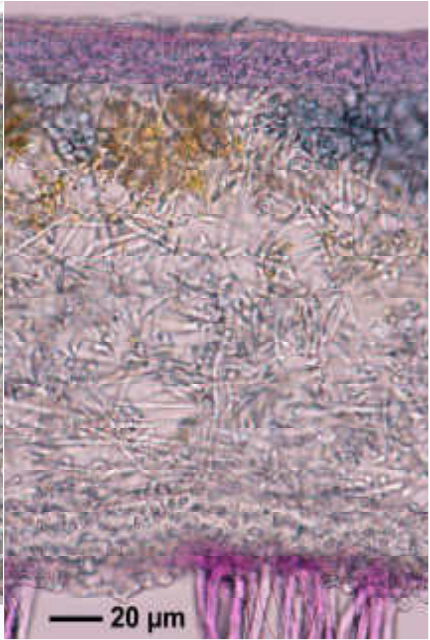
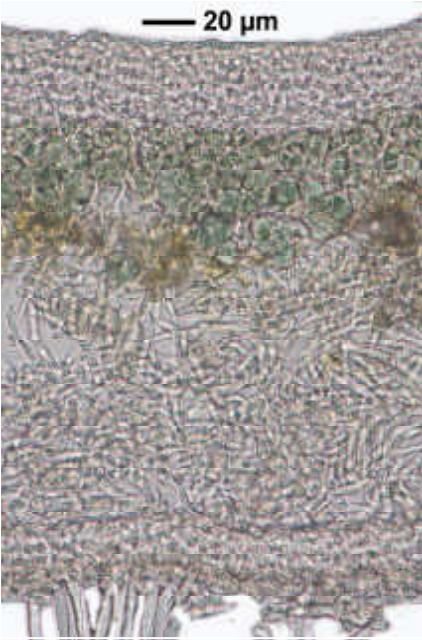
Pseudocyphellaria desfontainii (Delise) D.J.Galloway

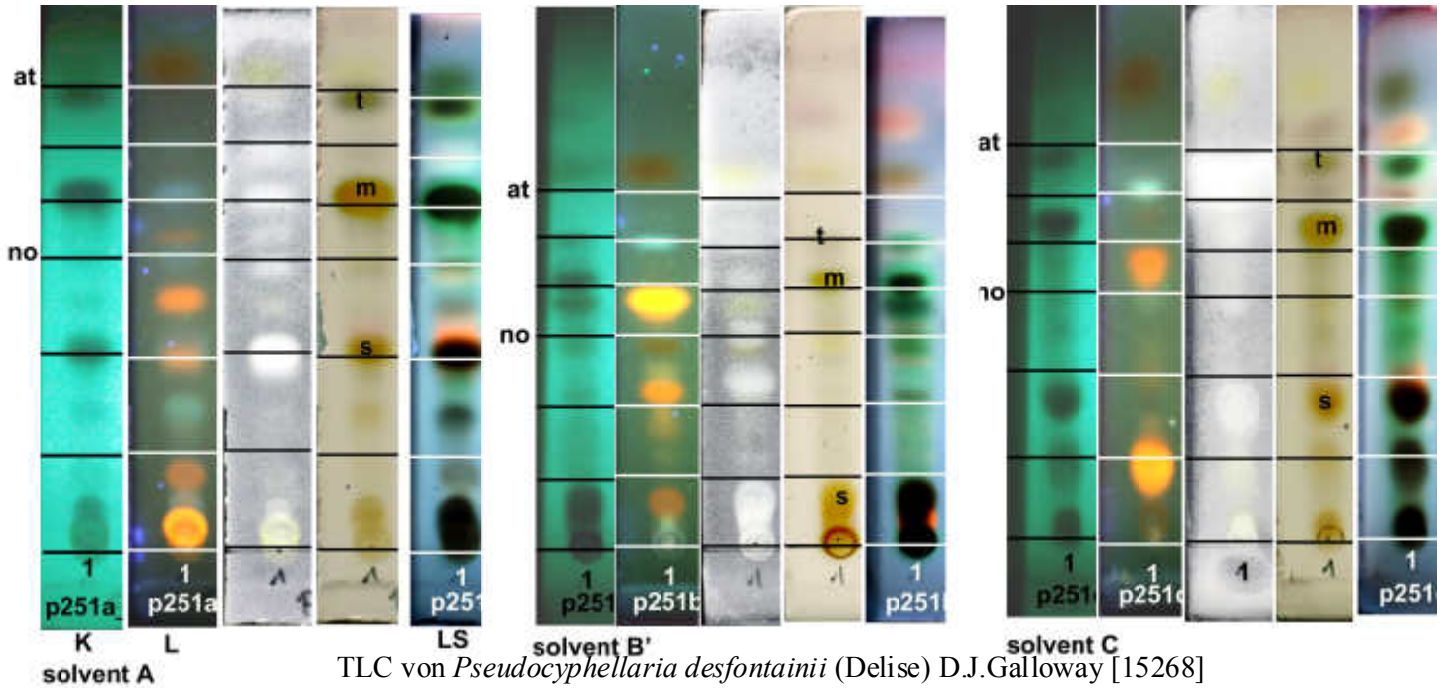
Thallus grau, schwach reticulat grubig, ohne Sorale, mit Isidien. Isidien marginal und laminal, zylindrisch, teils furcat oder verzweigt, an den Spitzen gelb, dort teils rau und etwas pulverig sorediös werdend. Mark gelb (unterschiedlich intensiv). Unterseite an den Rändern hellbraun zum Zentrum hin dunkel bis schwärzlich braun, mit schwarzbraunem Tomentum. Pseudocyphellen klein, intensiv gelb. Photobiont: *Cyanobakterien*

Lit.: Lichenologist 17(3):304

[15268], La Reunion, Takamaka.







K = Kurzwelle, L = Langwelle, LS = Langwelle mit Säure
 no = norstictic-Eichlinie, at = atranorin-Eichlinie
 s = stictic, m = methylgyrophorat, t = tenuiorin