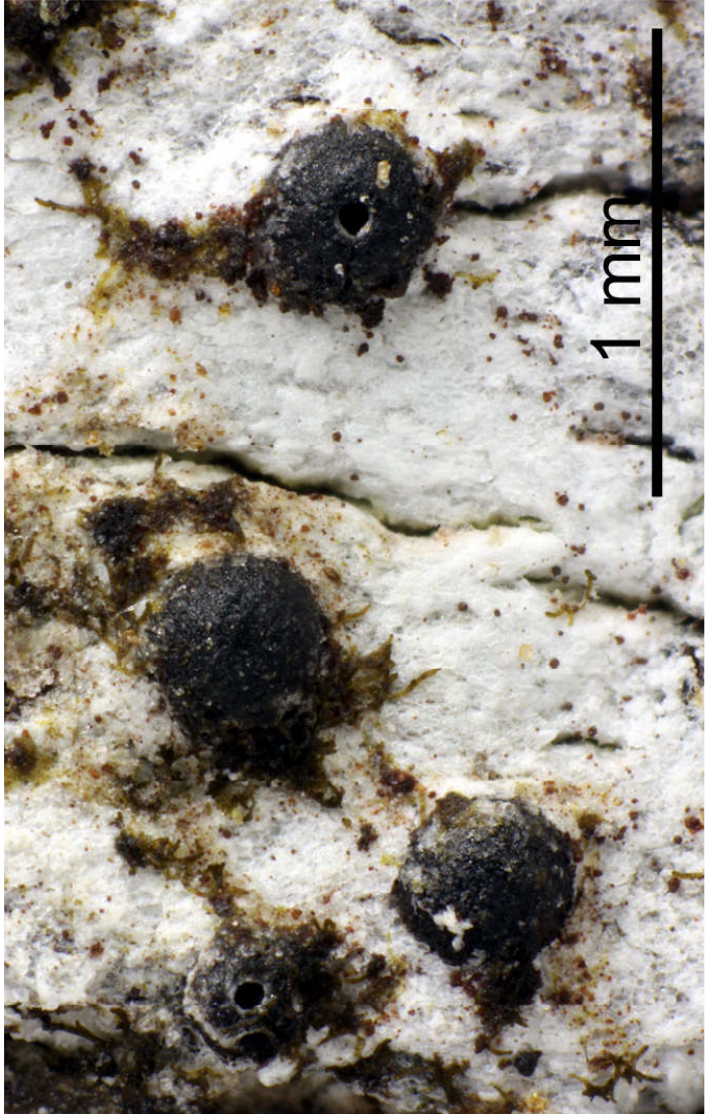
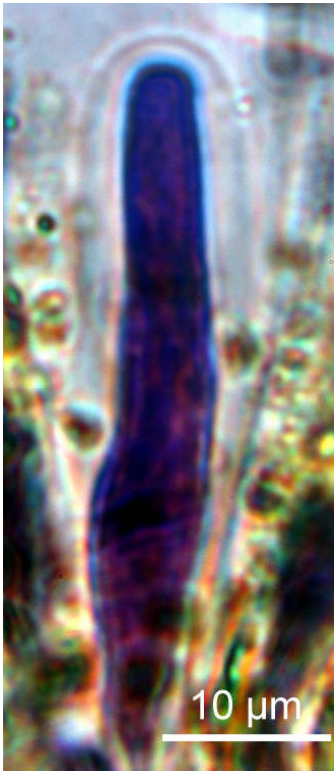


*Pseudopyrenula subgregaria* Müll.Arg.

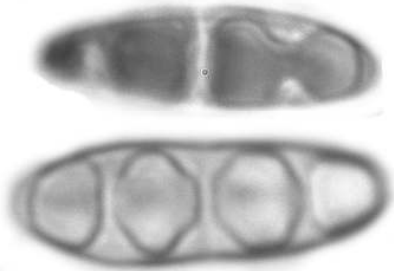
Spores hyaline, 8/ascus, 3-septate, cells diamond-shaped, 18-24 x 5-7  $\mu$ m. Hymenium yellow inspersed, I-. Paraphyses branched. Pantropical. Lit: Aptroot, Bibl. Lich. 97.

[14452], Seychelles, Praslin, Nationalpark Sentier Glacier Noire, 4°19.916' S, 55°44.465' E, ca. 200-320 m. Leg. Schumm & Frahm 30.09.2008, det. Schumm test. Aptroot 2008.





10  $\mu\text{m}$



10  $\mu\text{m}$

