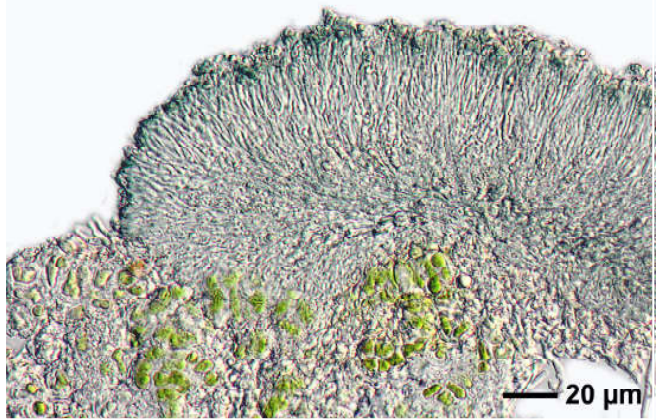
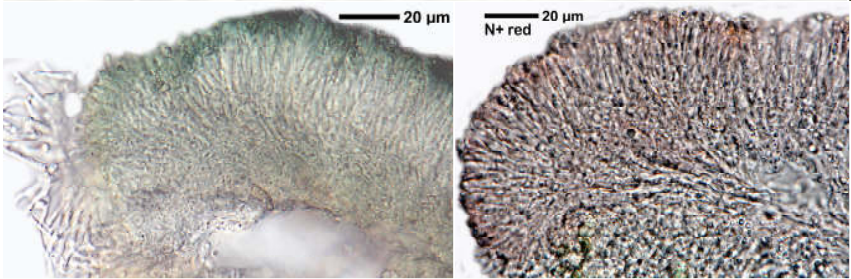
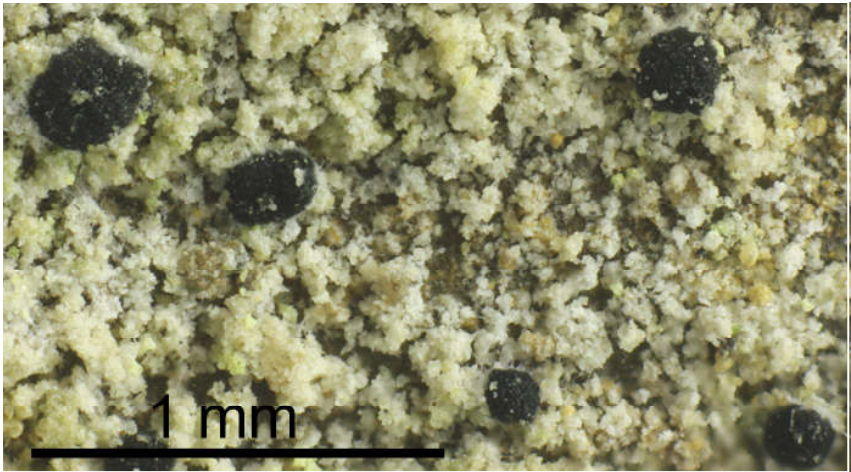


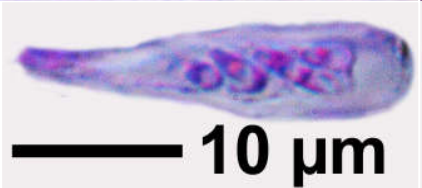
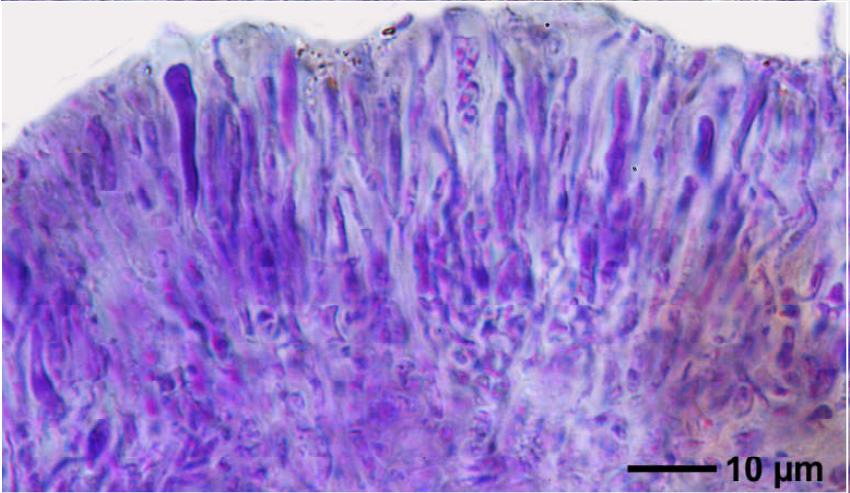
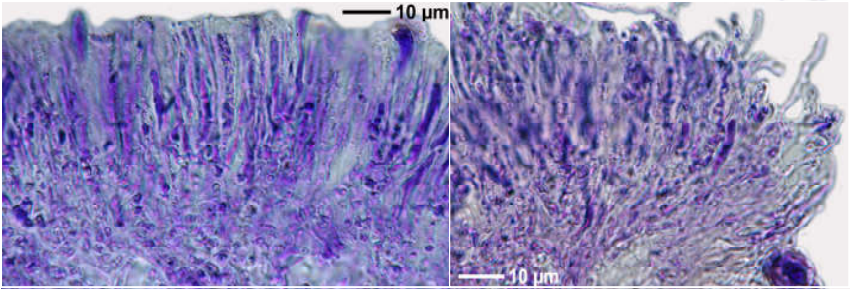
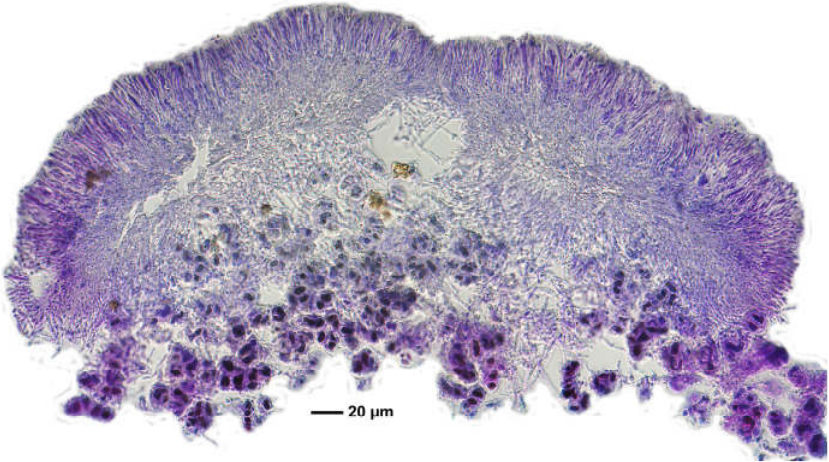
Psilolechia clavulifera (Nyl.) Coppins 1983

Thallus blassgrün bis weißlich, leprös. Apothecien 0,1-0,4 mm, trocken schwarz, feucht grau, stark gewölbt, ohne Thallusrand, Eigenrand schwach entwickelt, teils als feiner weißer Saum an der Basis der Apothecien durch auswachsende Excipularhyphen. Epithecium blaugrün, in N+ rötlich in K unverändert. Hypothecium farblos. Sporen länglich-oval bis tropfenförmig, hyalin, 1-zellig, $3,9-6,5 \times 1,3-2 \mu\text{m}$. Photobiont: *Stichococcus*. Chemie: Thallus K-, C-, KC-, P-, UV-.

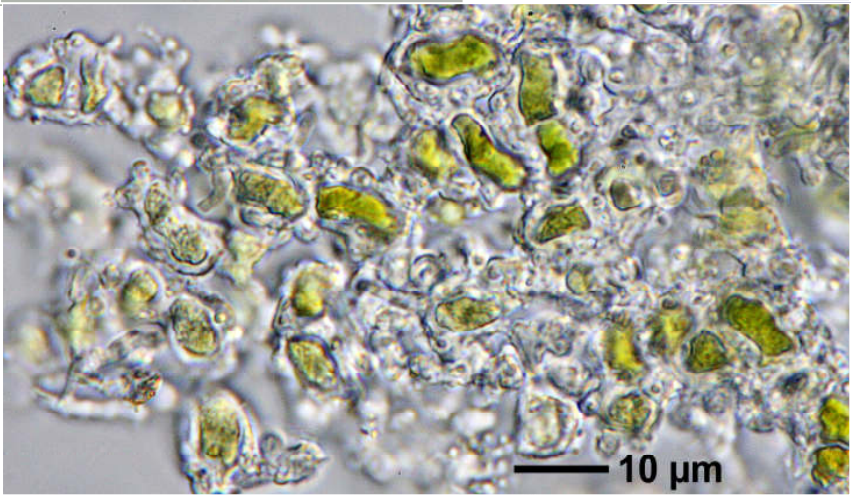
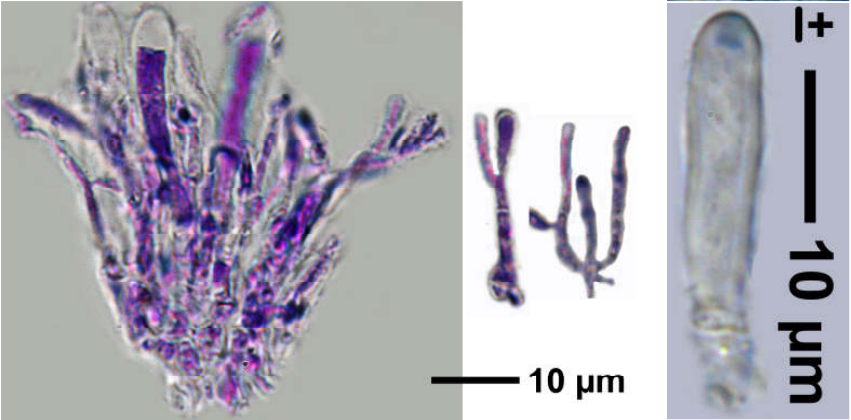
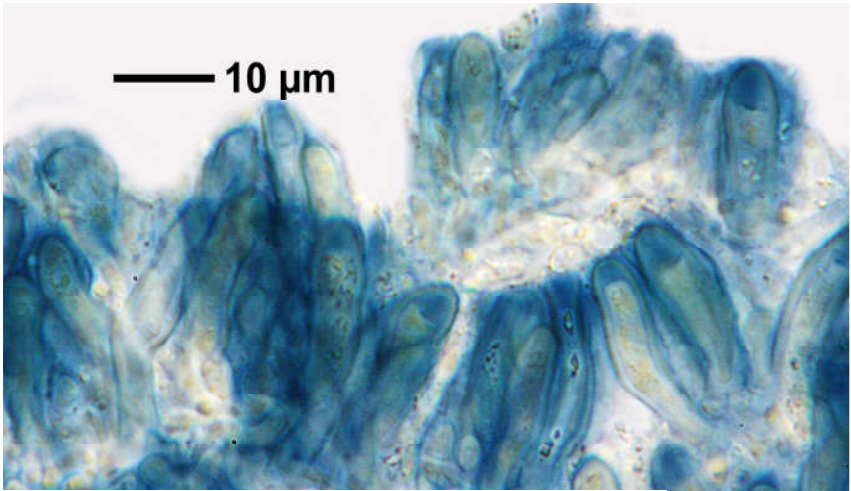


Lit. Coppins (Bull. Brit. Mus. Vol. 11(2): 200-203, 1983), Coppins & Purvis (Lichenologist 19, 1987)

[16500], Germany, Nordrhein-Westfalen, Bergisches Land, Solingen, Tal der Wupper, auf beim Wegebau angeschnittenen Silikatfelsen unter regengeschützten Überhängen in Bodennähe, ca. 150 m. Leg. D.G. Zimmermann 14.II.2010.



Psiloloechia clavulifera



Psiloloechia clavulifera