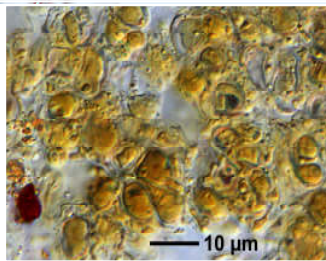
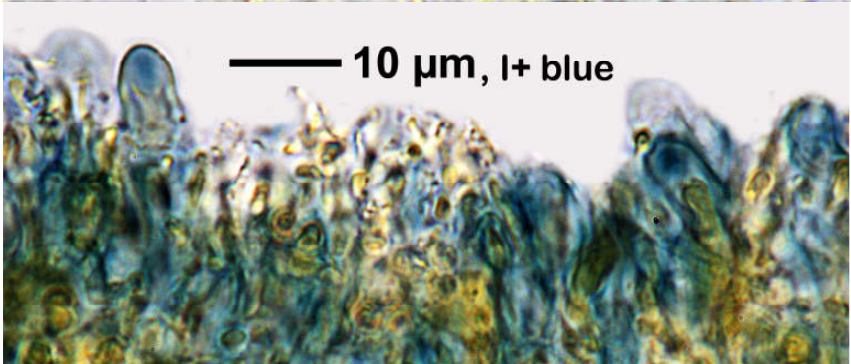
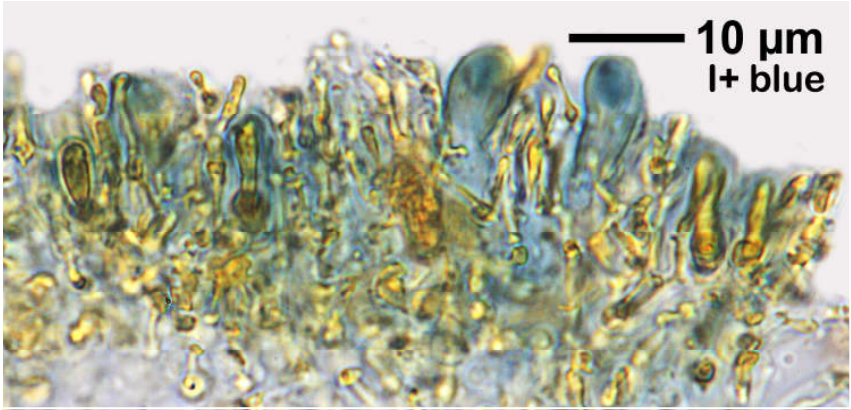
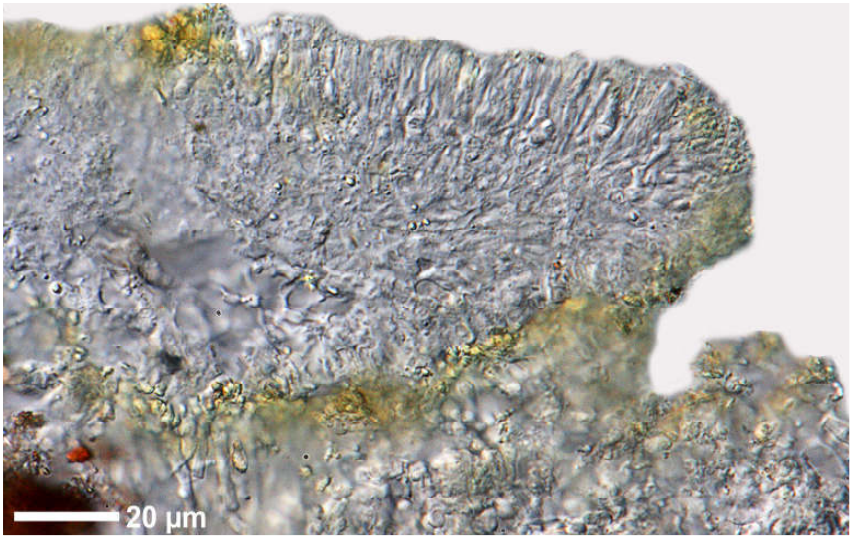


Psilolechia lucida (Ach.) Choisy

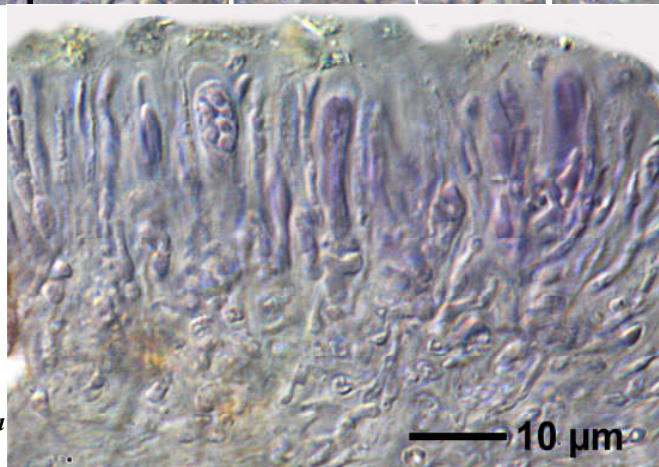
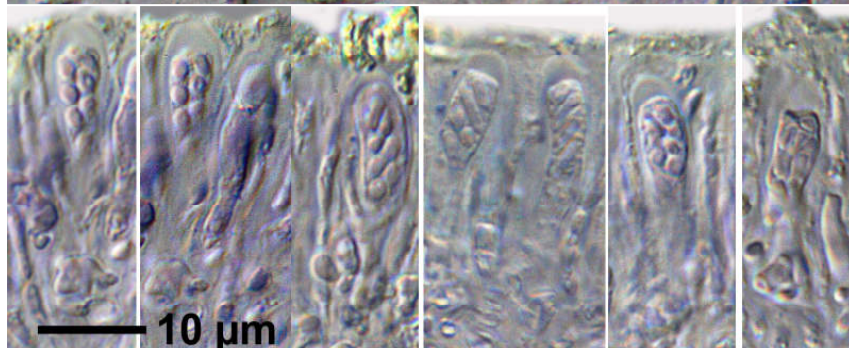
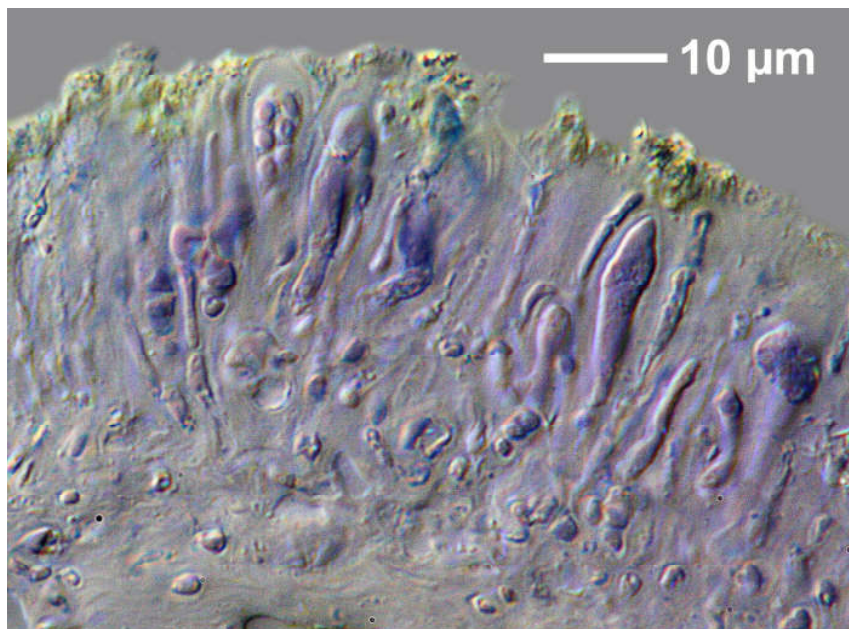
Hymenium 25 µm, im oberen Teil auf 8 µm
gelb inspers, in K farblos löslich. Hypothe-
cium hell. Ohne Thallusrand. Sporen oval
bis etwas tropfenförmig, 1-zellig, hyalin,
ca. 1,5-3,3 x 1,4-1,7 µm. Chemie: Thallus
K-, C-, KC-, P-, UV+ orange (Rhizocarpsäure).



[11566], Portugal, Madeira, Rabacal, 1080 m, auf Wurzeln.



Psilolechia lucida (Ach.) Choisy



Psilolechia lucida
(Ach.) Choisy