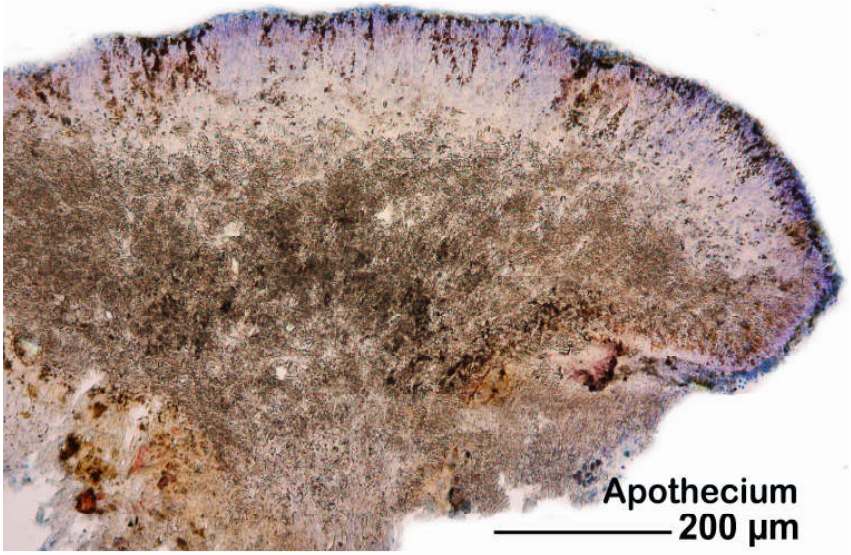


Psora testacea Hoffm.

Thallus dickschuppig, flach, grau, gelblichgrün bis gelblichbraun, Ränder heller. Apothecien gewölbt, orangebraun bis rotbraun, K+ rot (Anthrachinone). Hypothecium durch Oxlatkristalle trüb. Paraphysen stark verzweigt und verbunden. Sporen 1-zellig, hyalin, 8/Ascus

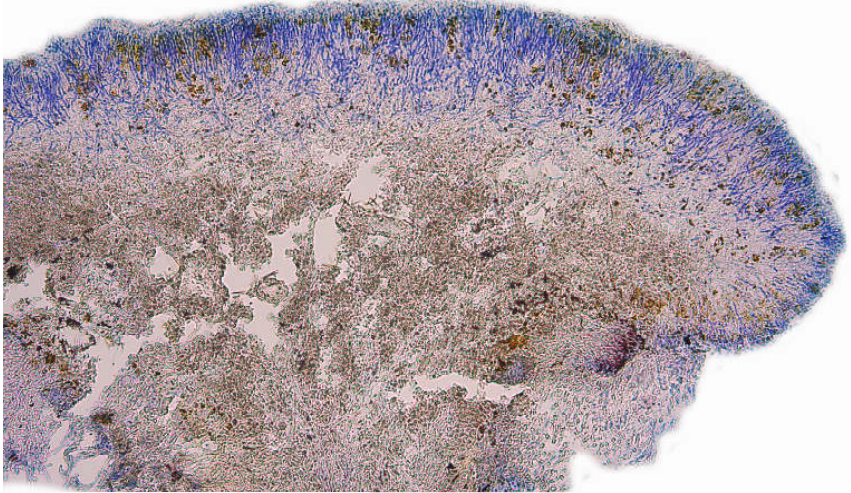
[16502], Germany, Baden-Württemberg, Kreis Göppingen, Gosbach-Bad Ditzenbach, Tierstein, 48,57461° N, 9,68471° E, 737 m, auf Kalkfelsen am Albrand. Leg. et det. Schumm 20.06.2010.



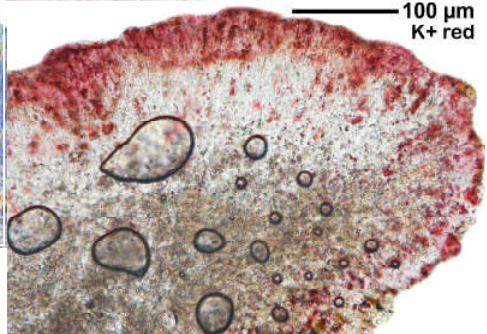
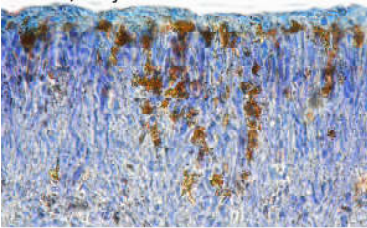


Apothecium
200 μm

200 μm Apothecium



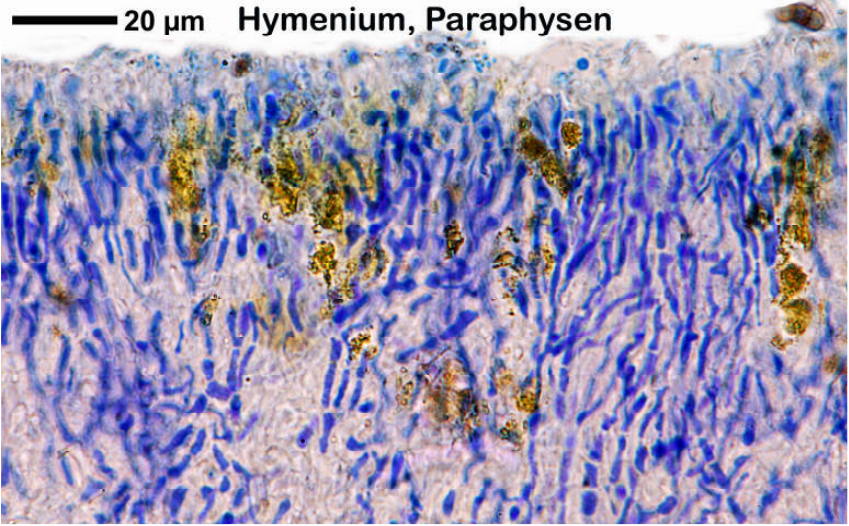
20 μm Hymenium



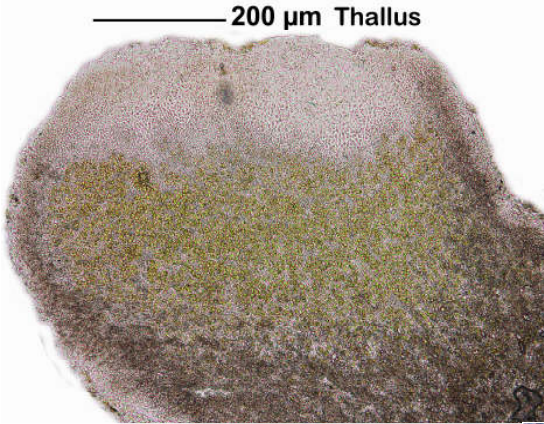
100 μm
K+ red

Psora testacea Hoffm.

20 μ m Hymenium, Paraphysen



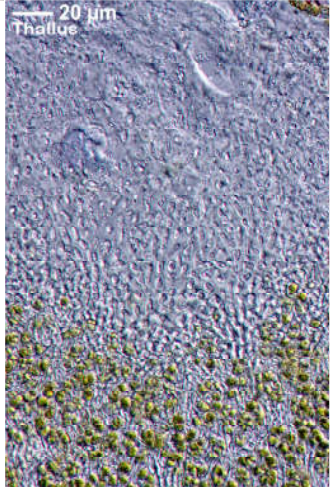
200 μ m Thallus



100 μ m Thallus



20 μ m Thallus



Psora testacea Hoffm.