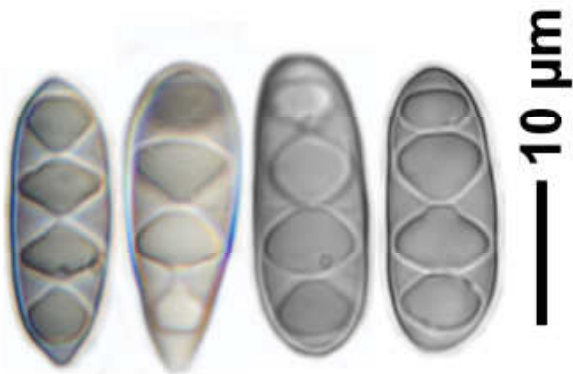
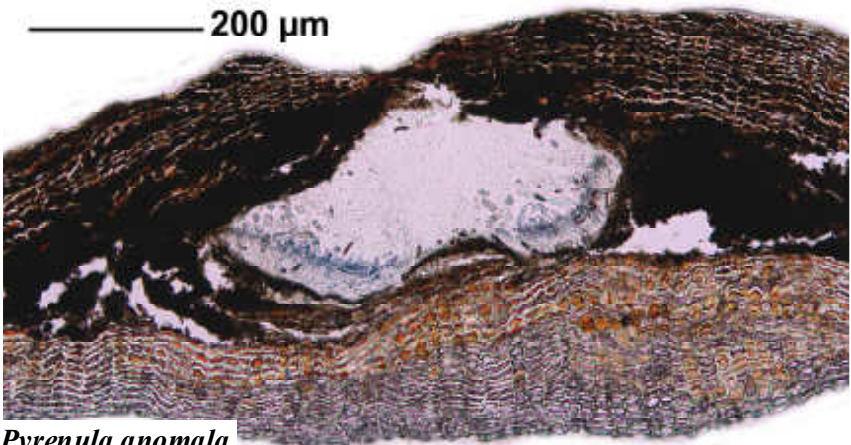
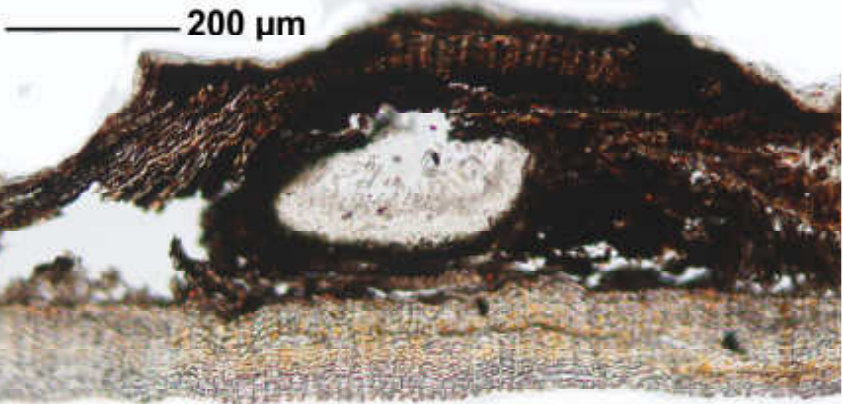
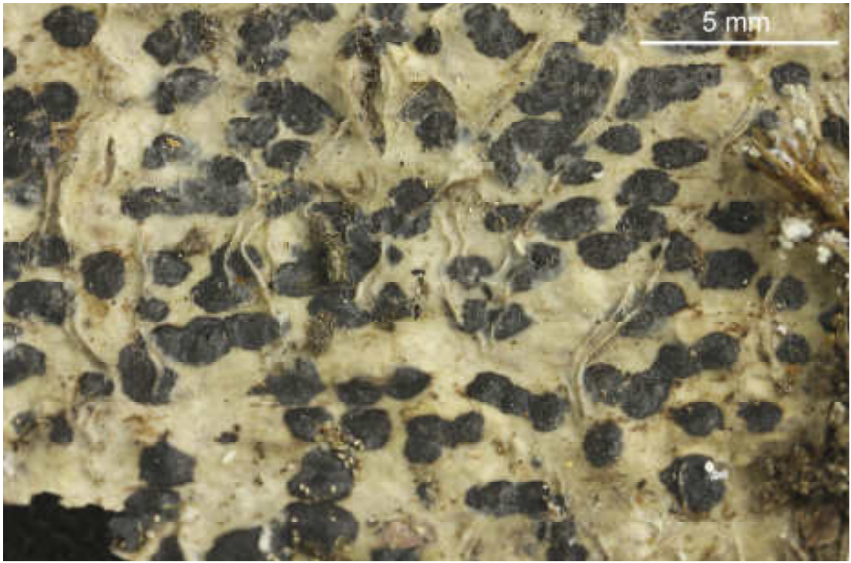


*Pyrenula anomala* (Ach.) Vain.

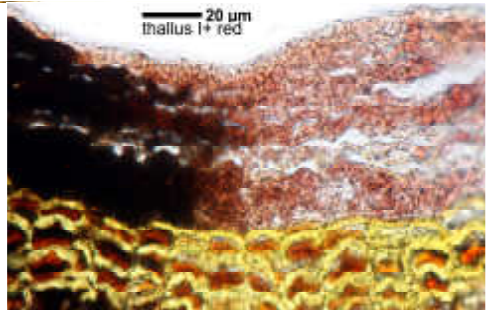
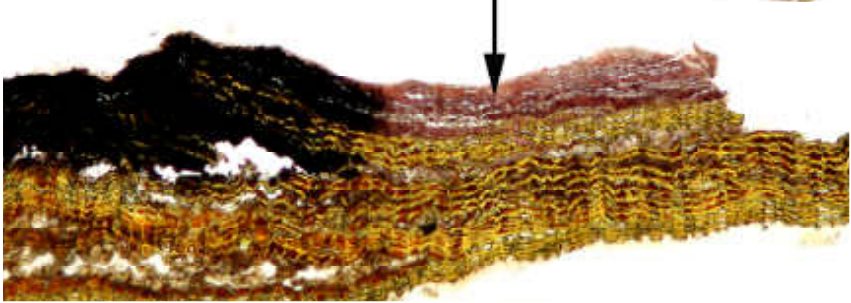
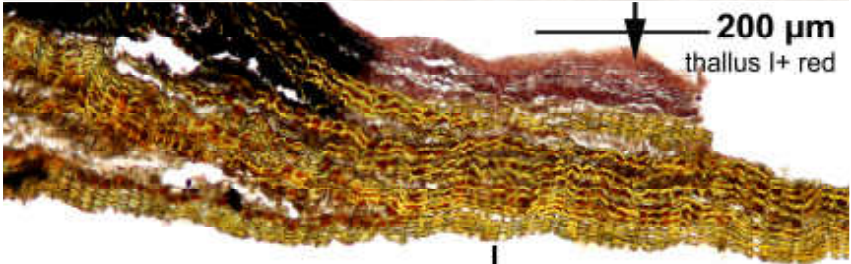
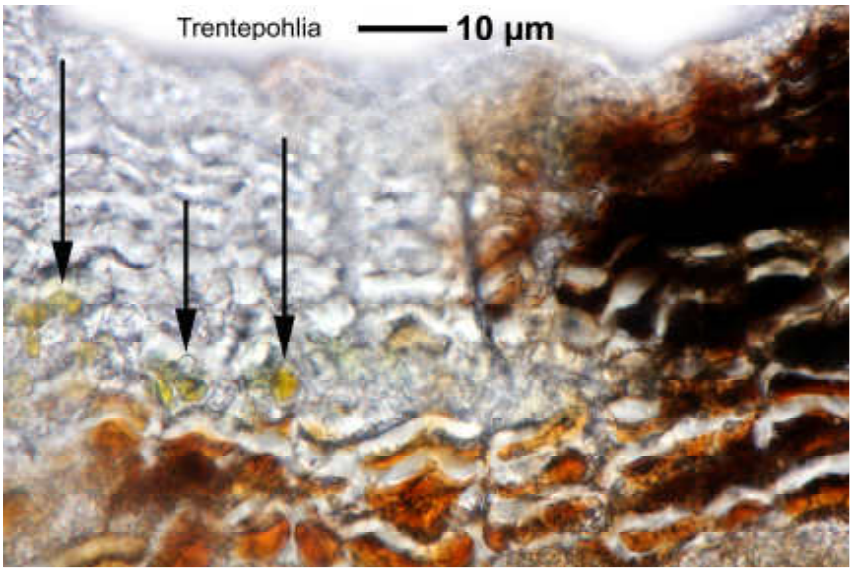
Thallus white to grey, UVL± pale yellowish but not intensely orange, c. 50 µm thick, K-, in microscopic section J+ reddish, nearly not lichenised, algae trentepohlioid. Perithecia confluent. Hamathecium J-, not interspersed. Paraphyses durable, branched. Ascospores colourless to pale brownish, 3-septate, 8/ascus, 20-22 x 6.5-8 µm.

[15257], La Reunion, Takamaka, feuchte waldige Felshänge bei der Elektrostation; 21,09105°S, 55,61998°E, 800 m. Leg. Schumm & Frahm 10.09.2009, det. Schumm 02.2010, test. Aptroot.

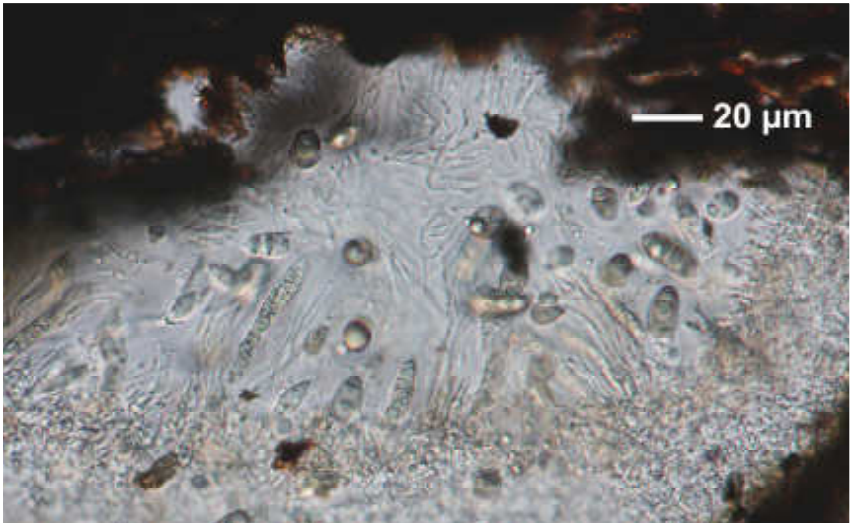
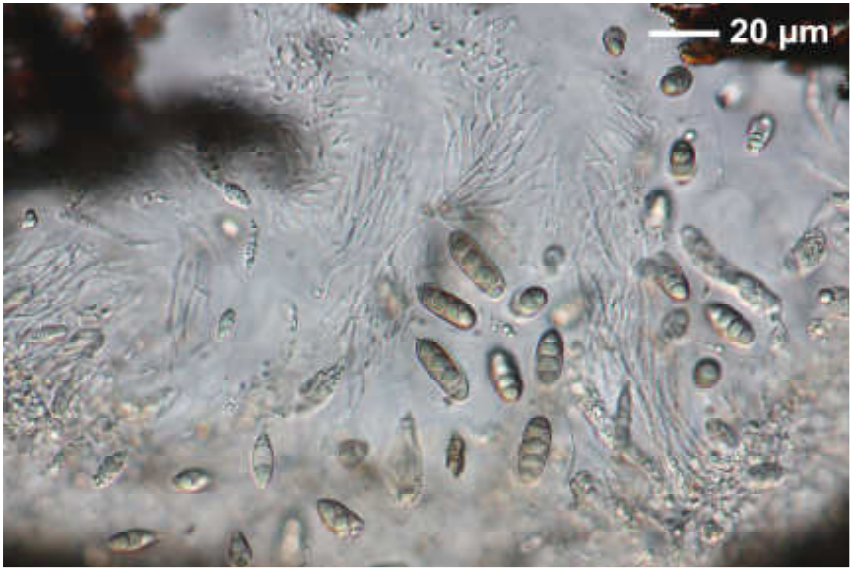




*Pyrenula anomala*



*Pyrenula anomala*



*Pyrenula anomala*