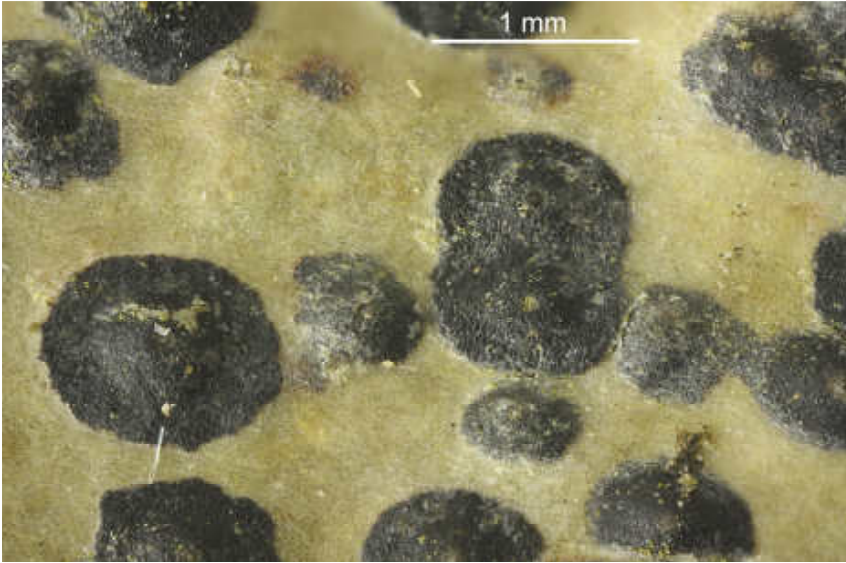
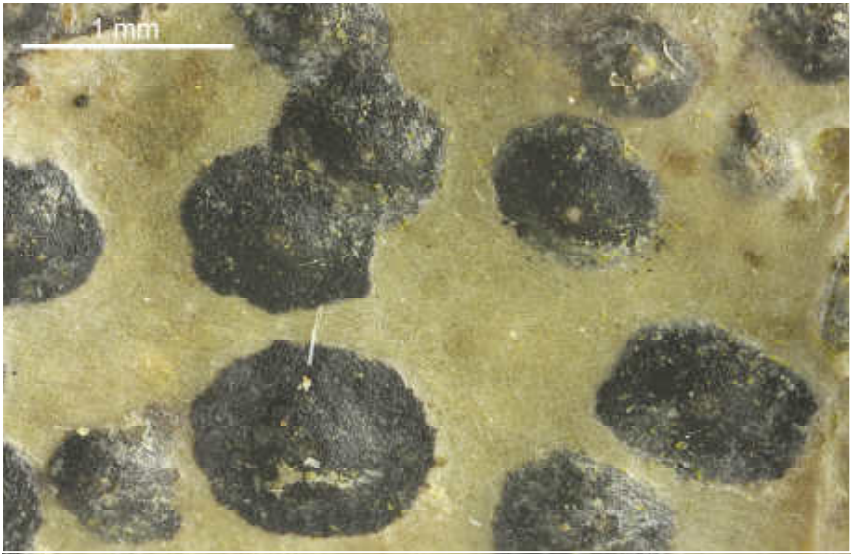


Pyrenula nitidula (Bres.) R.C.Harris

Thallus corticate, brownish to olive-green, with pseudocyphellae. Perithecia single or touching one another. Wall of perithecium with crystals. Hamathecium not inspersed, J+ blue. Filaments not branched. Ascospores grey-brown, 3-septate, 17-22 x 9-12 μm , lumina angular, not separated from the outer wall by endospore. Chemistry: nil. Lit.: Aptroot et al. (2008, Bibl. Lichenolog. Bd. 97).

[15623], La Reunion, nördlich Langevin an der Straße zur Cascade de la Grande Ravine; 21,36107° S, 55,64667° E, 130 m. Leg. Schumm & Frahm 16.09.2009, det. Aptroot 2011.

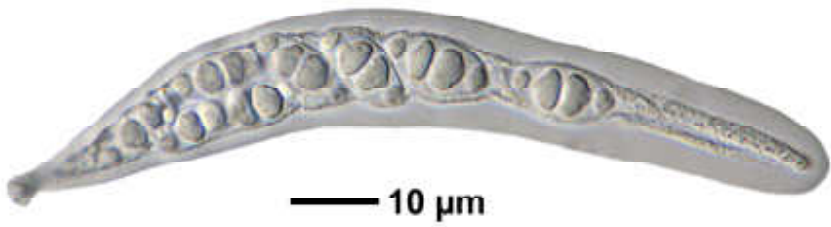
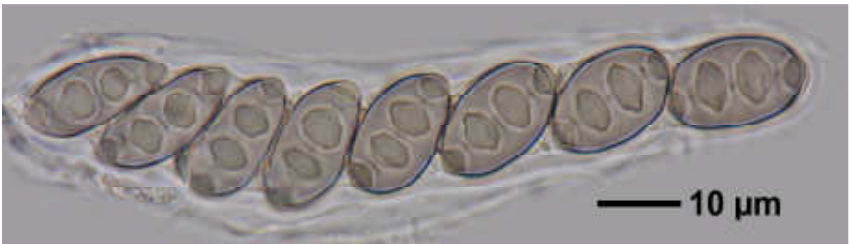
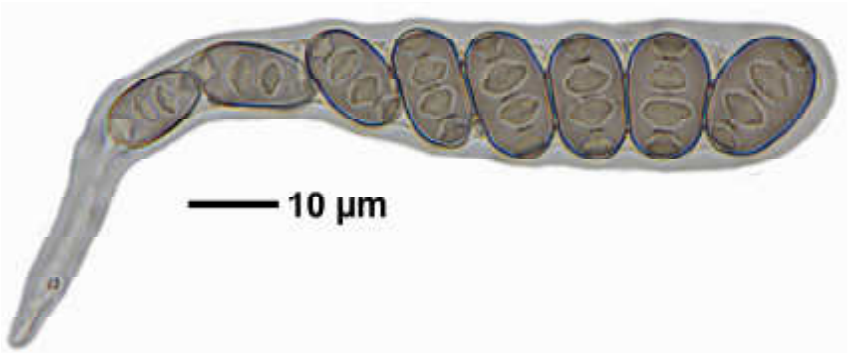
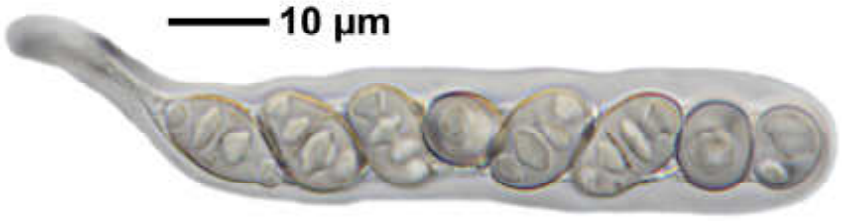




200 μm



Pyrenula nitidula



Pyrenula nitidula