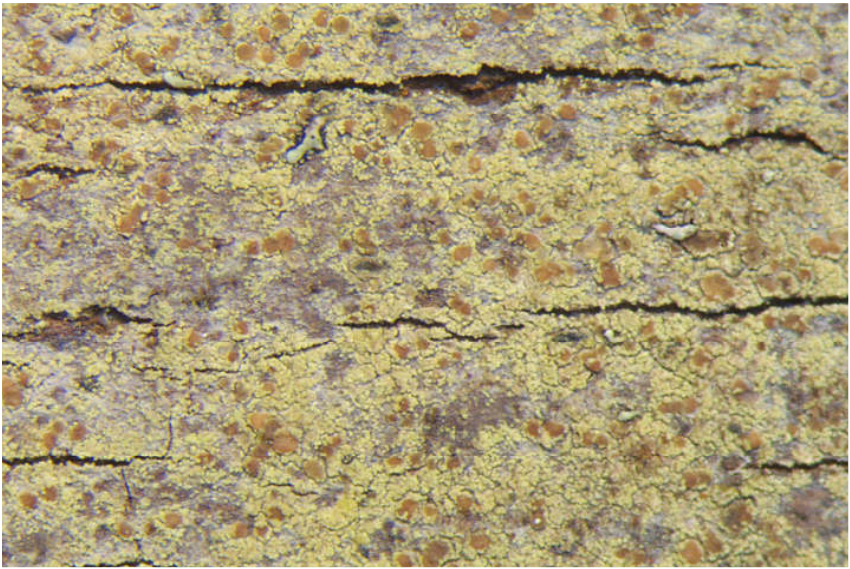
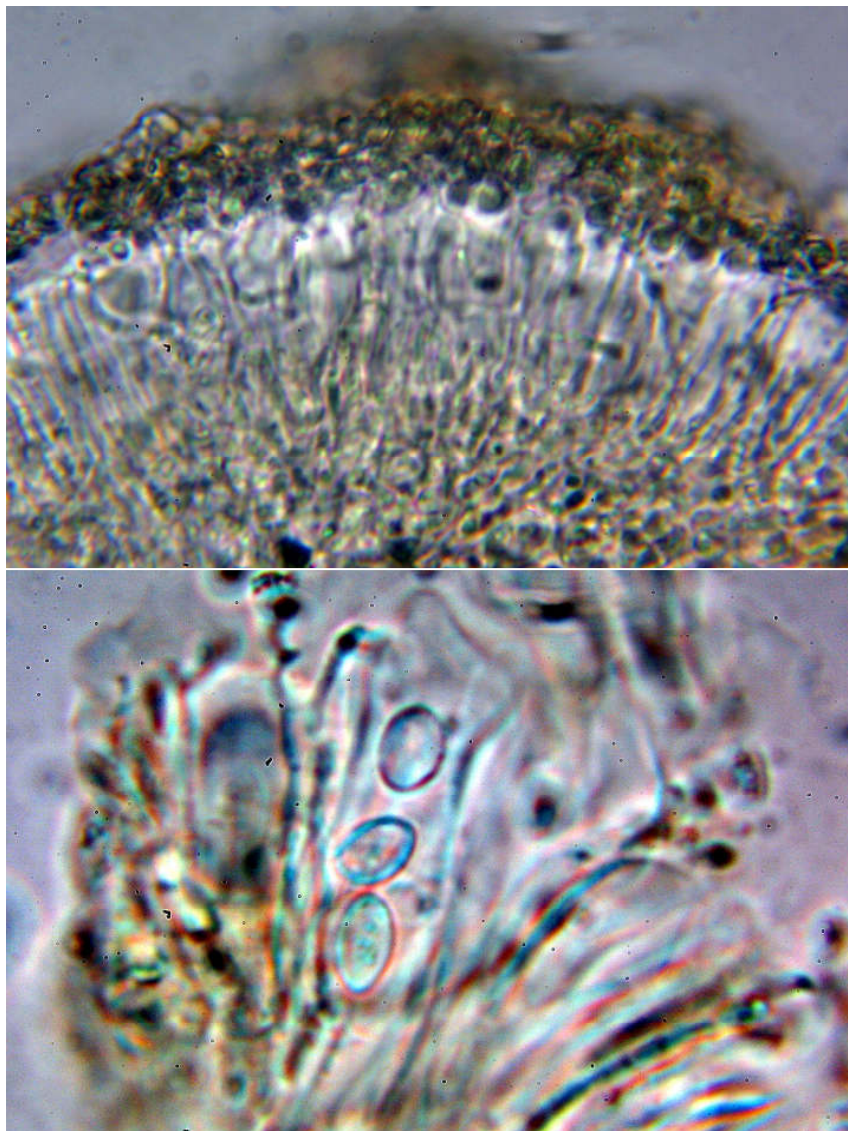


***Pyrrhospora quernea*** (Dicks) Koerber  
(od. *Ramboldia*?)

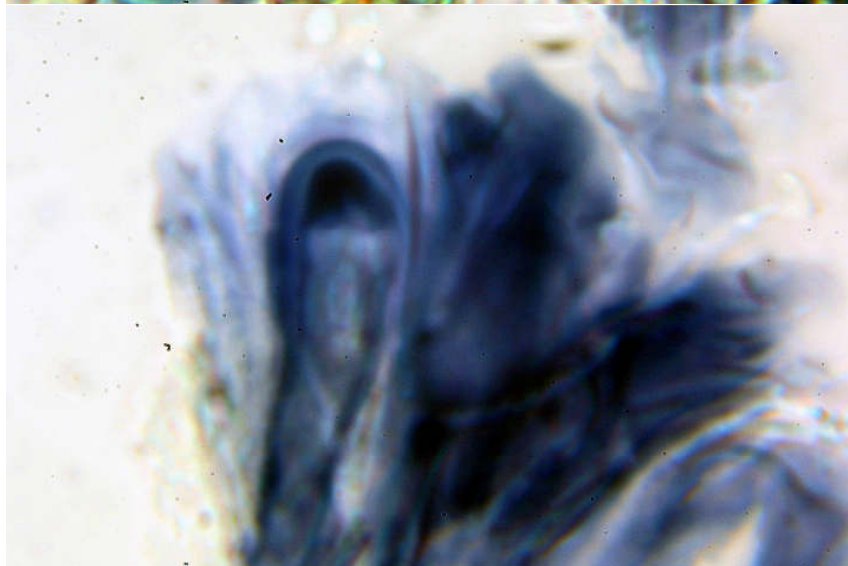
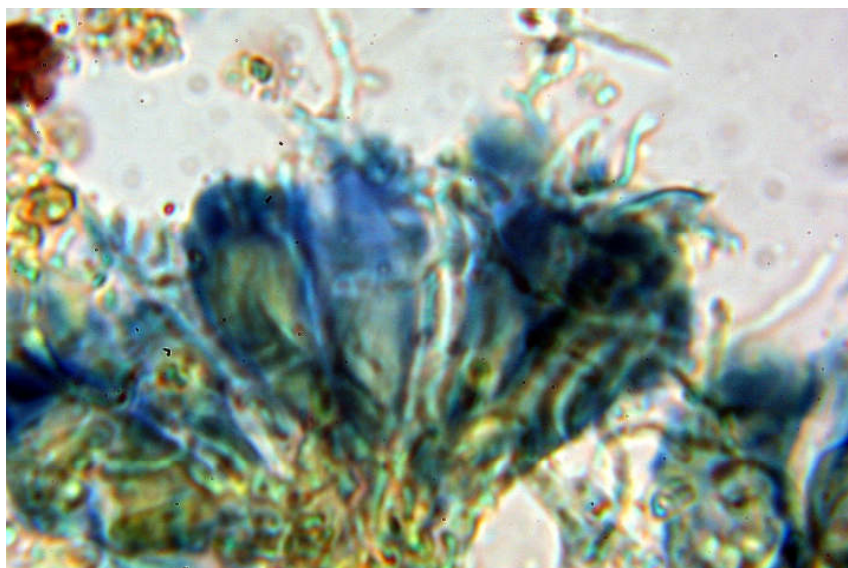
Sporen hyalin, 1-zellig, 8,2-9,8 x 5,5-6,5  $\mu$ ; Epithecium bräunlich, K- (!->*Ramboldia*), 11  $\mu$ ; Hymenium hell, 33  $\mu$ ; Hypothecium hell bis gelblich, 11  $\mu$ ; Paraphysen stark anastomosierend. Thallus K+ gelb, C+ orange, P- bis etw. gelblich, UV düster orange.

[11204], Portugal, Azoren, Sao Miguel, SO-Ufer des Lagoa Azul, 37°51.307' N, 25°47.060' W, 280 m, an Laubbaumrinden. Leg. Schumm 06.06.2003, det Schumm.





*Pyrrhospora quernei*



*Pyrrhospora quernei*