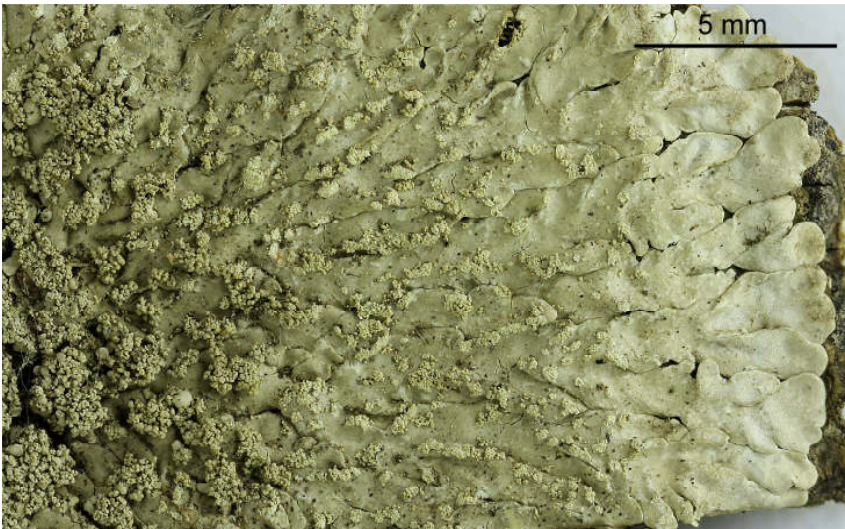


Pyxine cocoes (Sw.) Nyl.

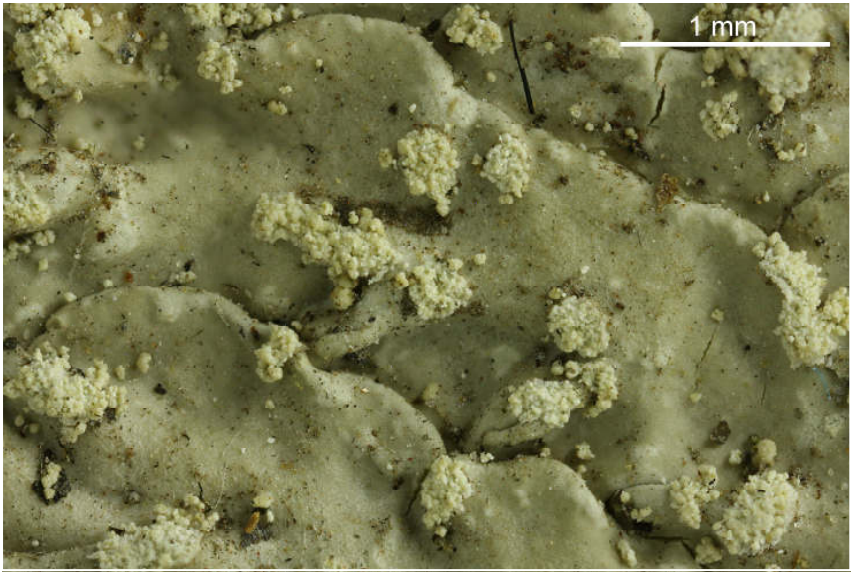
Thallus grey, 3-30 cm wide, closely attached, with laminal or marginal soralia (sometimes very coarse-grained). Lobes \pm flat, 0.4-0.8 mm wide, \pm maculosus, mostly plate-like pruinose. Medulla white or very pale yellow, K-. Lower surface black. Rhizinae black, mostly unbranched, 0.1-0.4 mm long. Apothecia 0.4-1.4 mm wide, disc black, not pruinose. Stipes brown-red (K+ red). Ascospores, brown, 1-septate, 8/ascus, (12-)15-18(-20) \times (4-)6-7(-8) μ m. Chemistry: upper cortex UV+ intense yellow-orange, K-, C-, KC-, P-; lichexanthone, triterpenoids. Mostly corticolous particularly at palm trees.

[9543], Thailand, Tempelanlage von Sukhothai. 17°01.019' N, 99°42.273 E, 78 m, corticol. Leg. Schumm 29.03.2002, det. Aptroot 2009.





Pyxine cocoes



Pyxine cocoes