

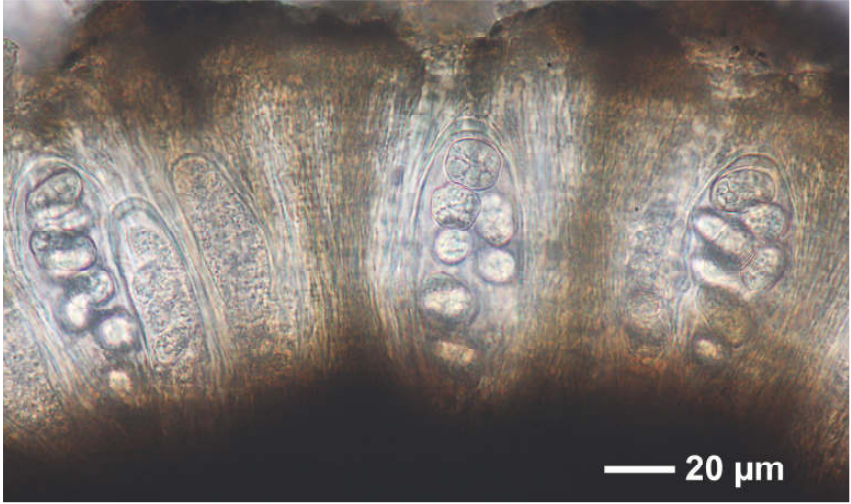
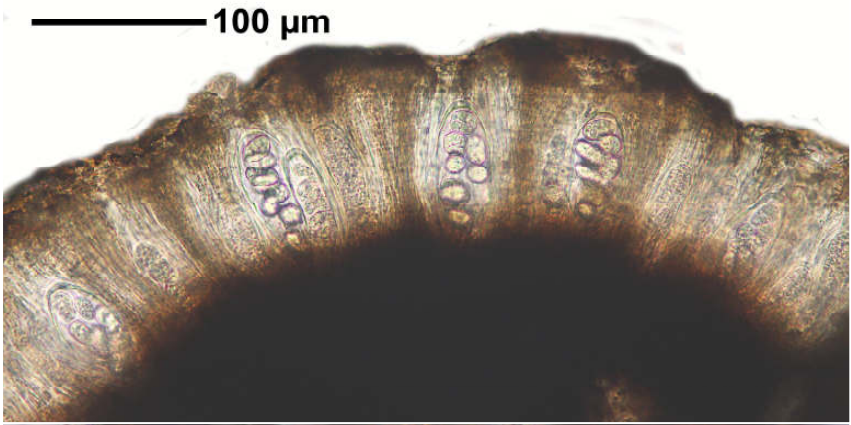


Rhizocarpon reductum Th.Fr.

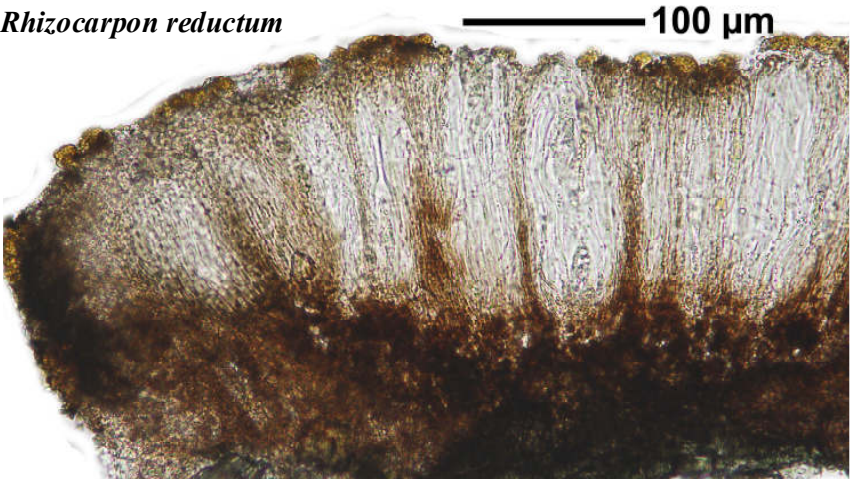
[= *Rhizocarpon obscuratum* (Ach.) A.Massal.]

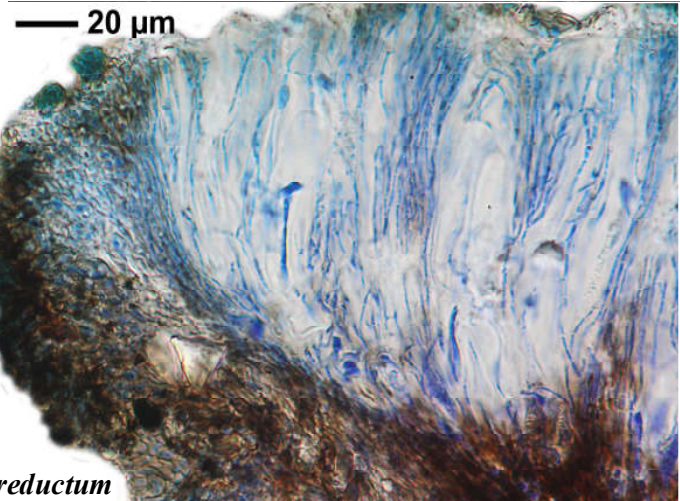
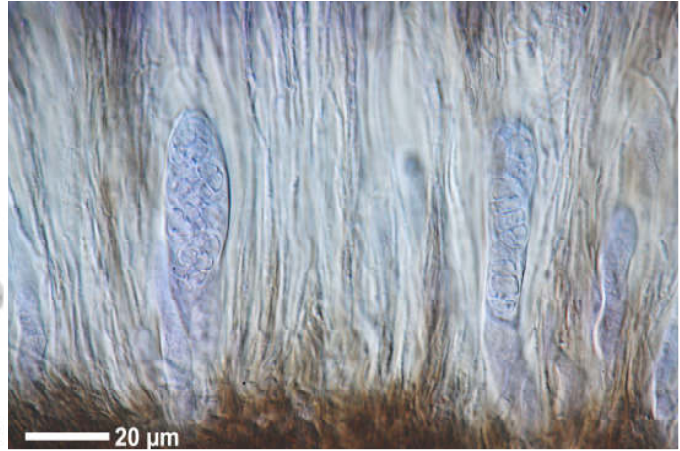
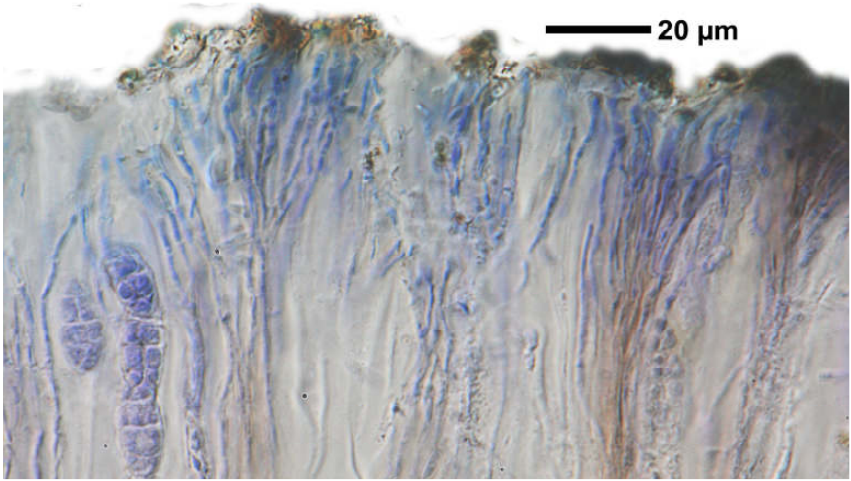
Thallus grau bis braun, rissig areoliert. Areolen 0,2-0,4 mm breit. Apothecien schwarz, eingesenkt, 0,4-0,6 mm breit, Scheibe rau. Epithecium olivgrün, N+ rot. Sporen hyalin, muriform, 8/Ascus, 17-26 x 9-13 µm. Chemie: Mark K+ gelb, P+ gelborange, J-, Stictinsäure.

[16524], Germany, Baden-Württemberg, Schwarzwald-Baar-Kreis, an der Straße zwischen Triberg und Hornberg nahe dem Himmelreichtunnel. 48,17013° N, 8,23420° E, 465 m. An Granitfelsen. Leg. et det. Schumm 07.07.2010.

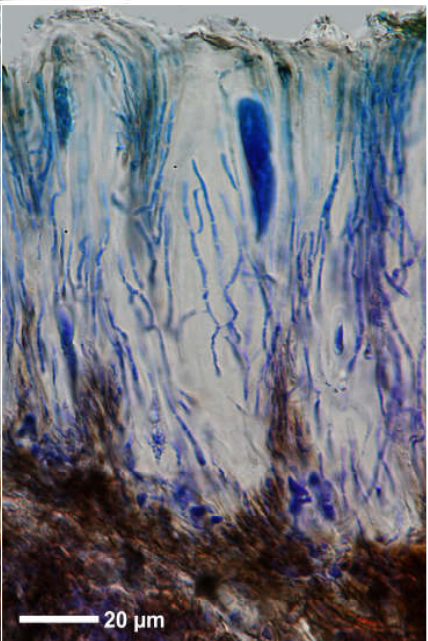
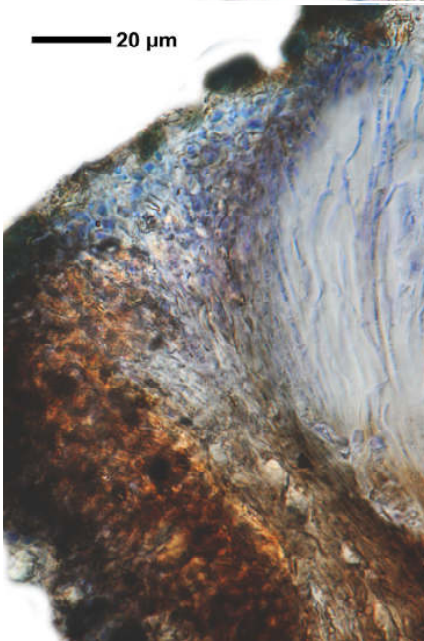
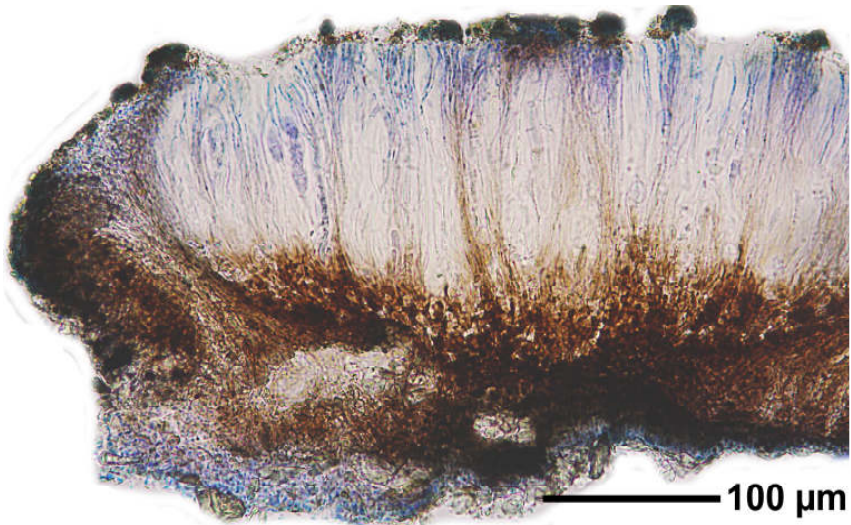


Rhizocarpon reductum





Rhizocarpon reductum



Rhizocarpon reductum