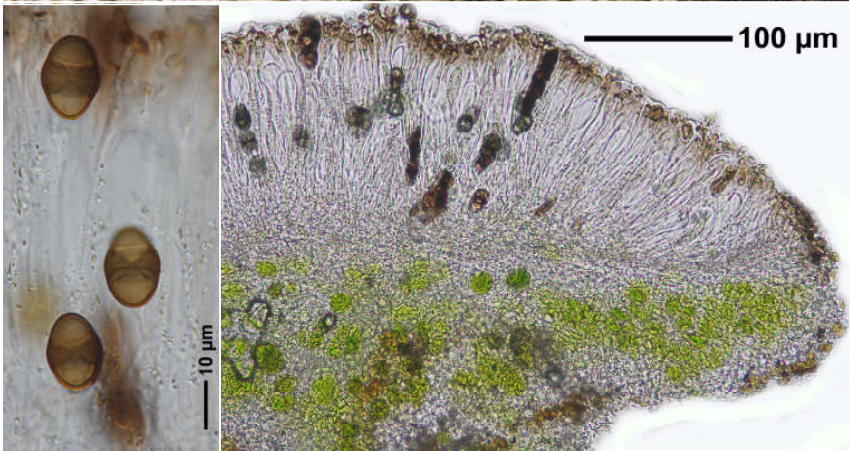
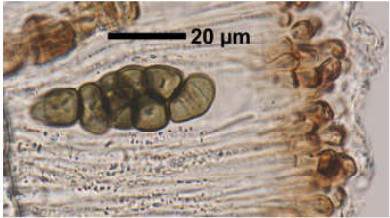
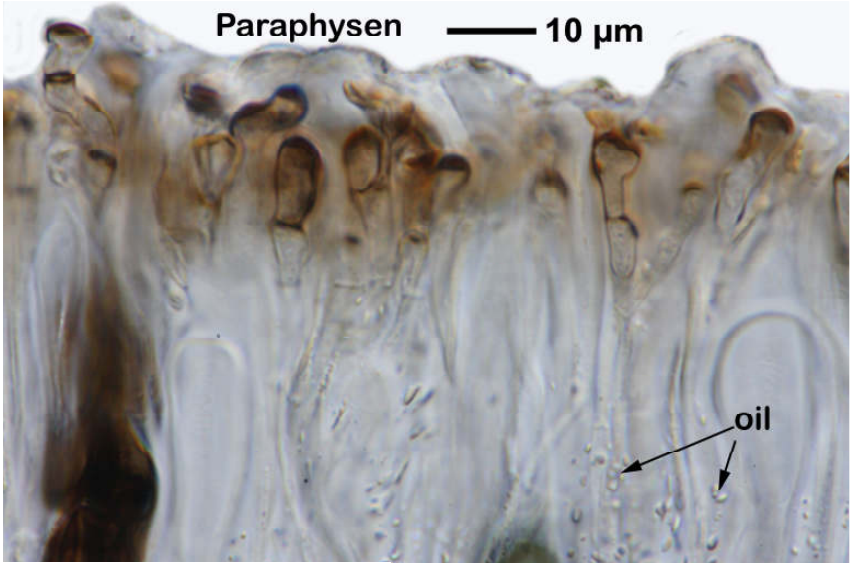
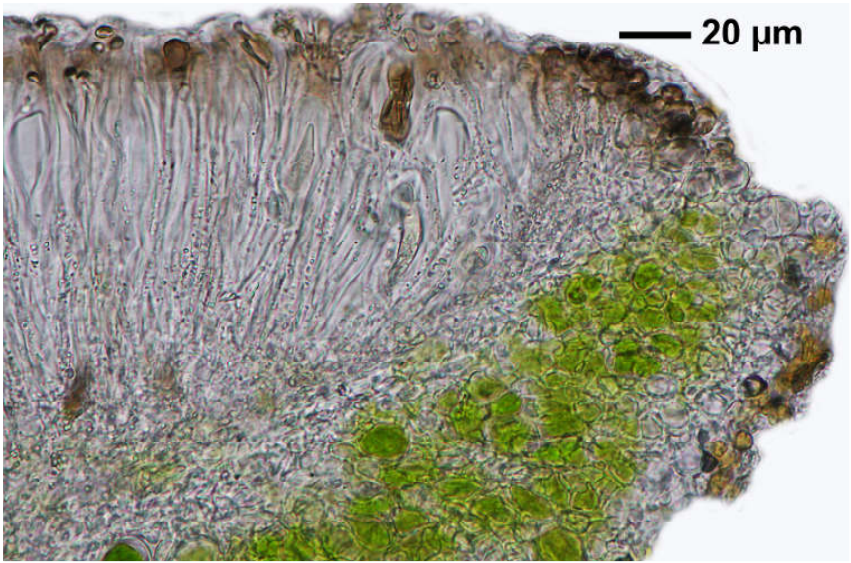


*Rinodina bischoffii* (Hepp.) A.Massal.

Hymenium mit feinen Öltröpfchen inspers. Sporen braun, 8/Ascus, 2-zellig, vom Bischoffii-Typ. Epithecium K-.

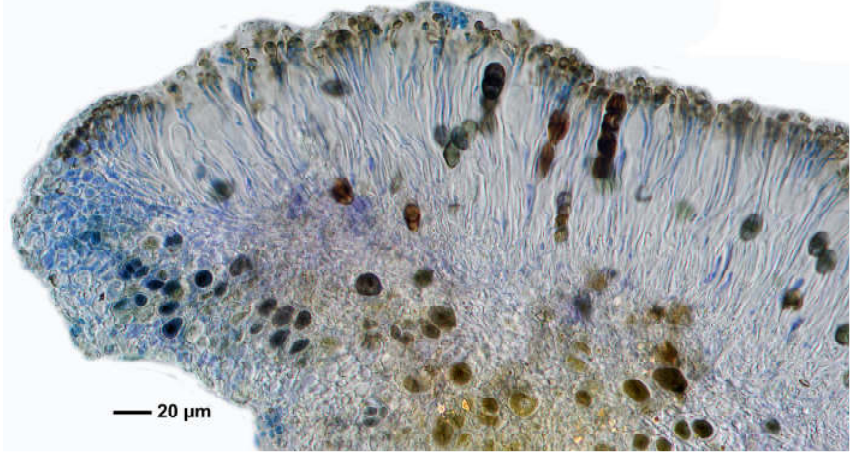
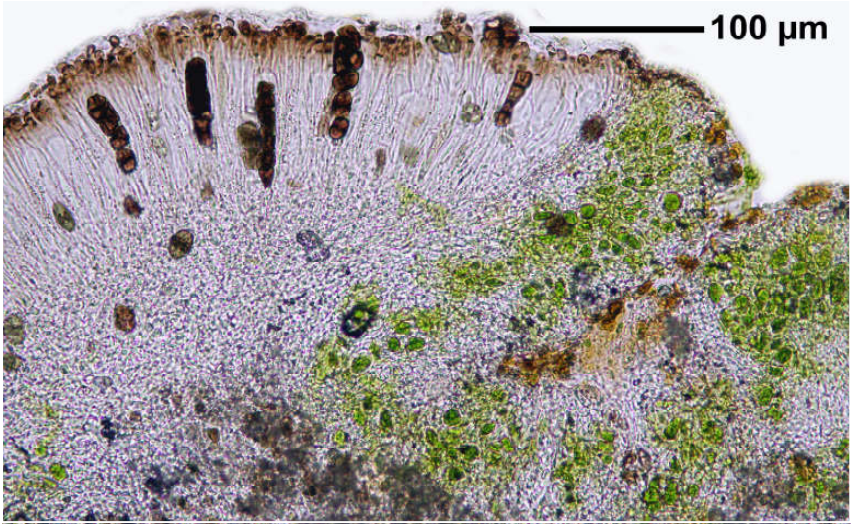
[16515], Germany, Baden-Württemberg, Kreis Göppingen, Hohenstaufen, südlich der Spielburg am Weg nach Hohrain, an Kalkblöcken in steiler Streuobstwiese, 48,73923° N, 9,71054° E. Leg. et det. Schumm 01.07.2010.





*Rinodina bischoffii*





*Rinodina bischoffii*