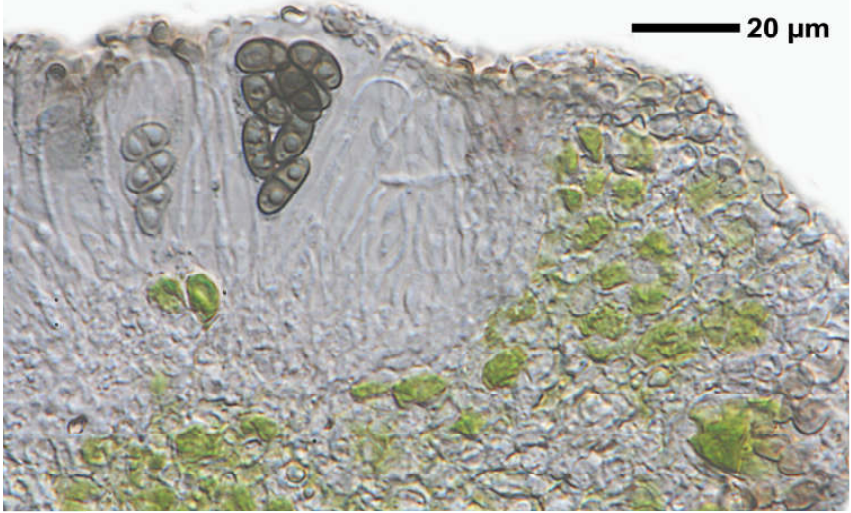
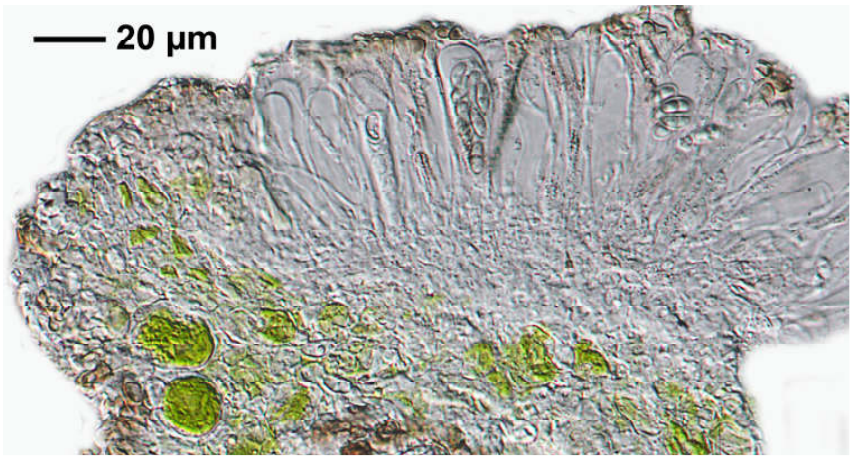


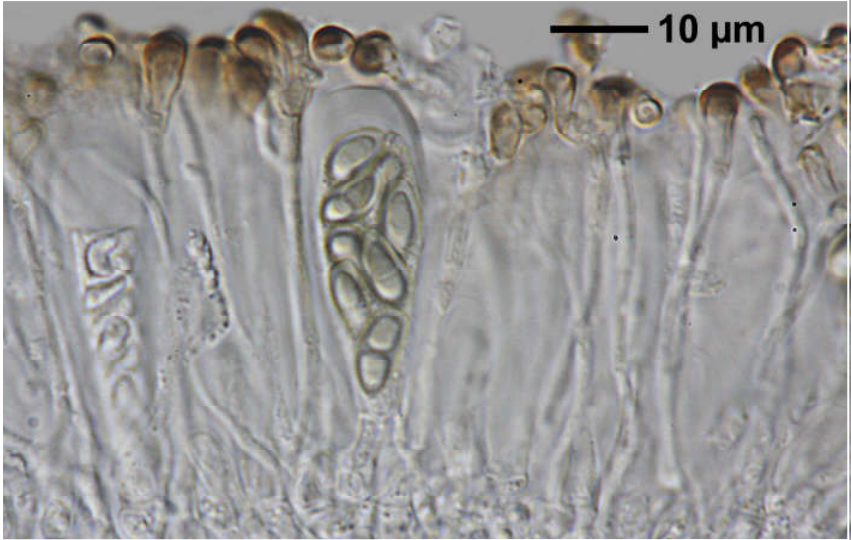
***Rinodina pyrina* (Ach.) Arnold**

Thallus grau, ohne Soredien, K- (bis undeutlich bräunlich). Epithecium braun. Hymenium hyalin. Hypothecium hyalin. Paraphysen am Ende kopfig, 4  $\mu\text{m}$ , mit braunen Pigmentkappen. Sporen 1-septiert, 8/Ascus, grau bis braun, Wände kaum verdickt, ca. 12 x 5  $\mu\text{m}$

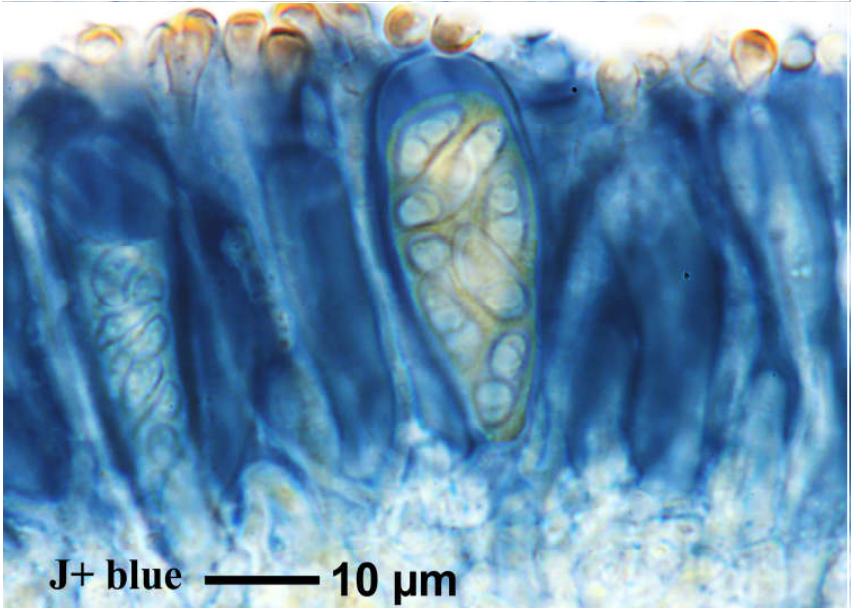
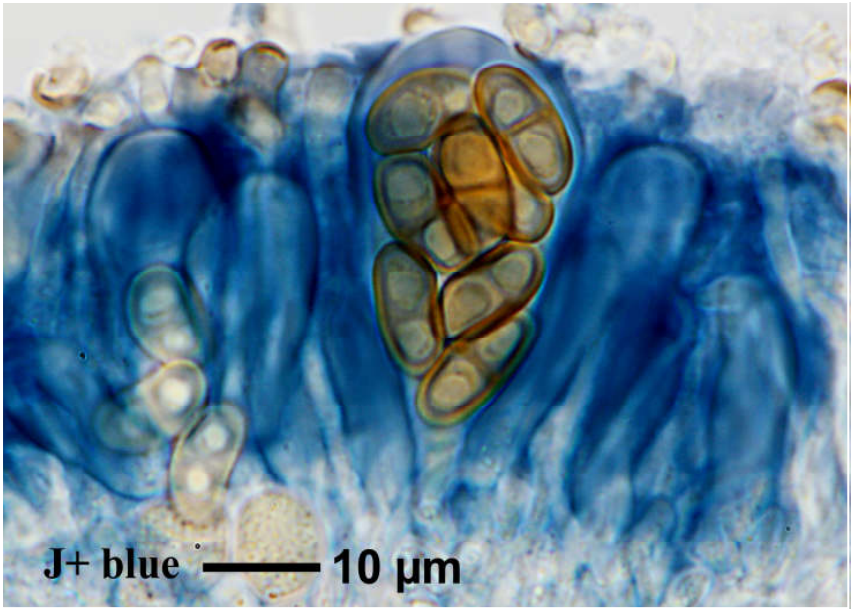
[16691], Germany, Baden-Württemberg, Kreis Göppingen, 2.5 km östl. von Geislingen zwischen Weiler ob Helfenstein und Linsenhof, auf alter Holzbank, 48.61839° N, 9.86216° E, 664 m. Leg. et det. Schumm 25.08.2010.



*Rinodina pyrina*



*Rinodina pyrina*



*Rinodina pyrina*