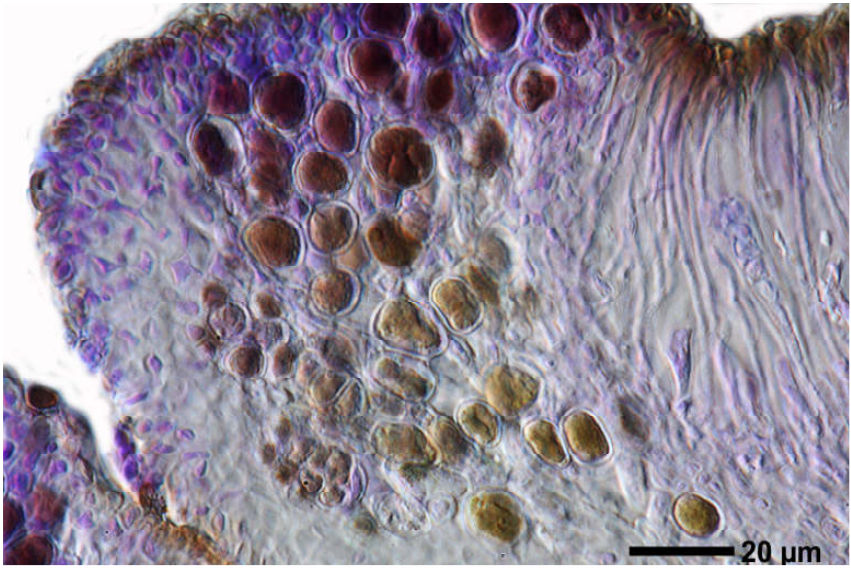


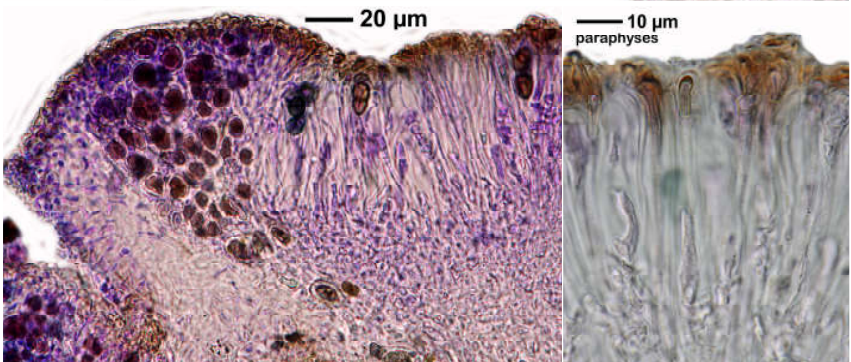
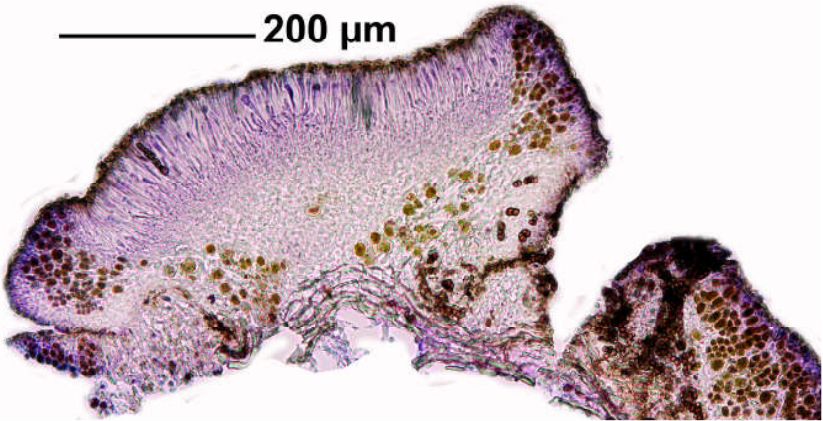
Rinodina sophodes (Ach.) A.Massal.

Sporen grau bis braun, 2-zellig, ca. $13 \times 8 \mu\text{m}$. Epithecium braun, $4,9 \mu\text{m}$. Hymenium $83 \mu\text{m}$. Hypothecium hell, ca. $50 \mu\text{m}$. Thallus K-, C-, P-, J-.

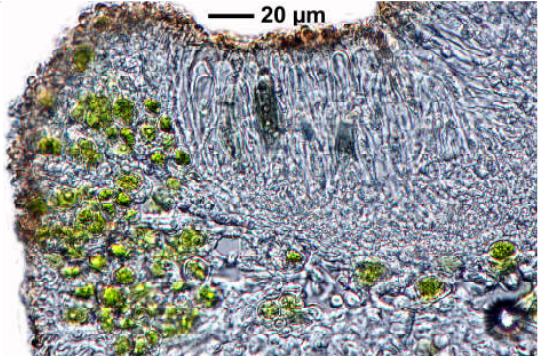
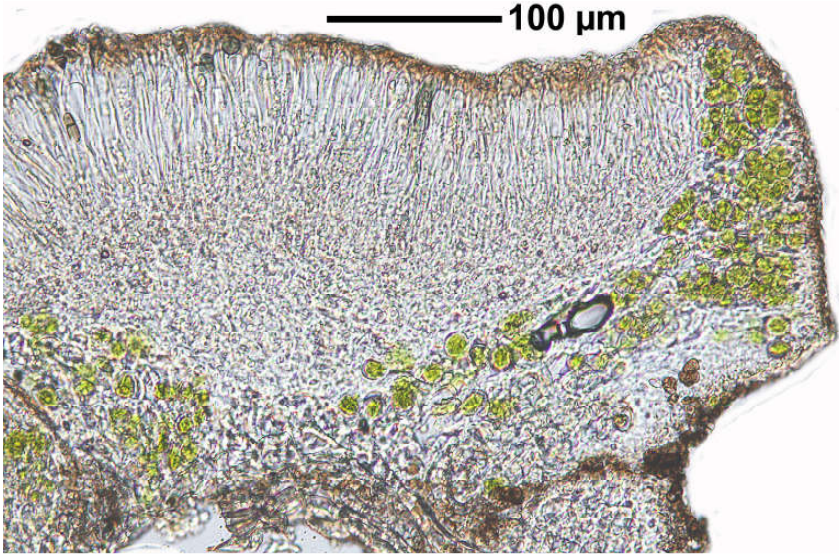
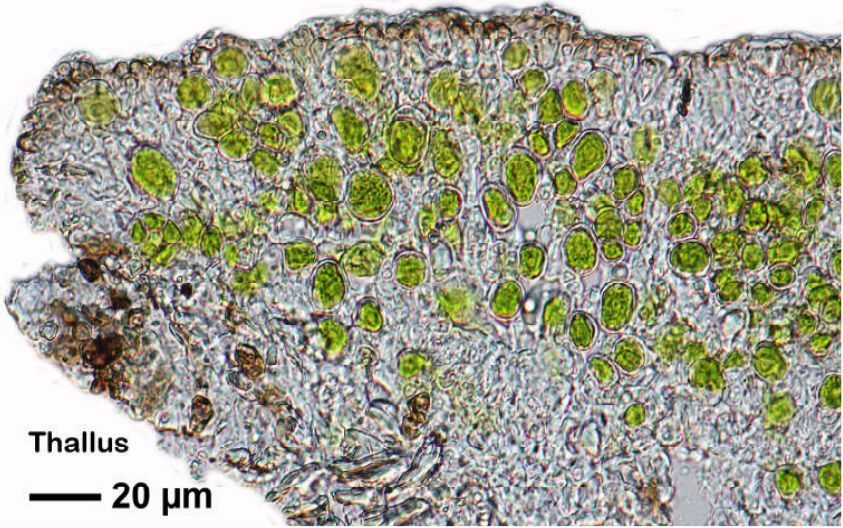
[16490], Germany, Baden-Württemberg, Kreis Göppingen, südlich Gammelshausen beim Kornberg, auf Carpinus, 690 m.



200 μm



Rinodina sophodes [16490]



Rinodina sophodes