

Roccella africana Vain. (1901)

Roccella podocarpa Vain. (1901)

Roccella subpodicellata (Vain.) Follmann & Huneck (1974)

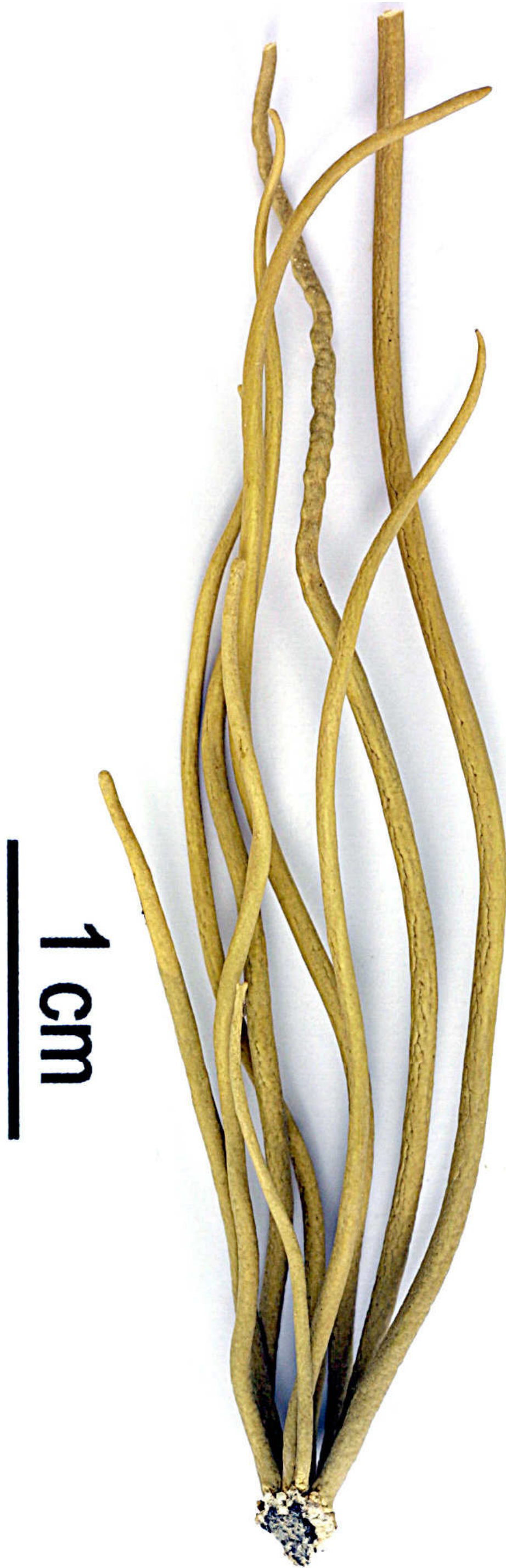
Roccella subpodicellata f. *complanata* (Vain.) Follmann & Huneck (1974)

Roccella tinctoria var. *subpodicellata* Vain. (1901)

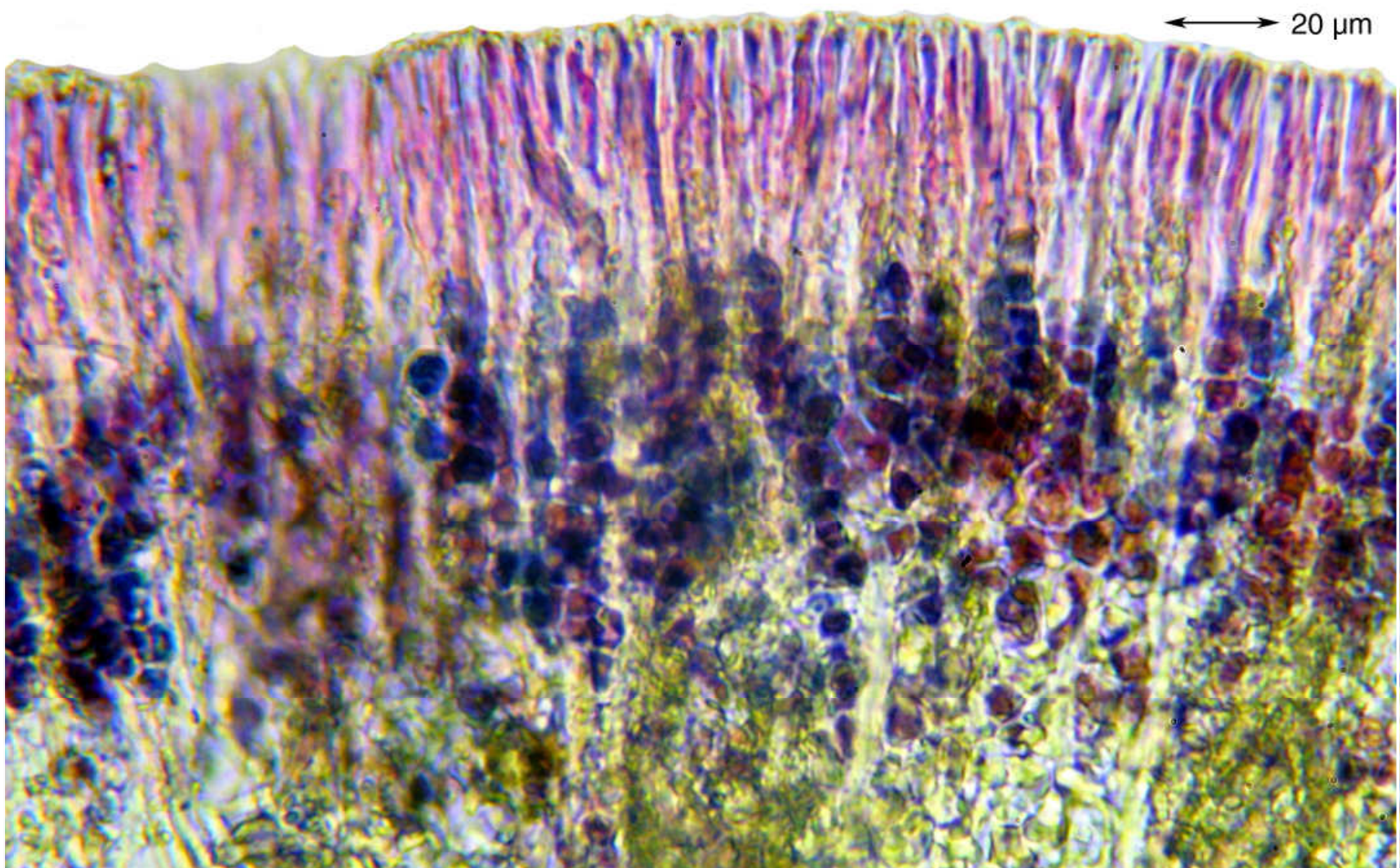
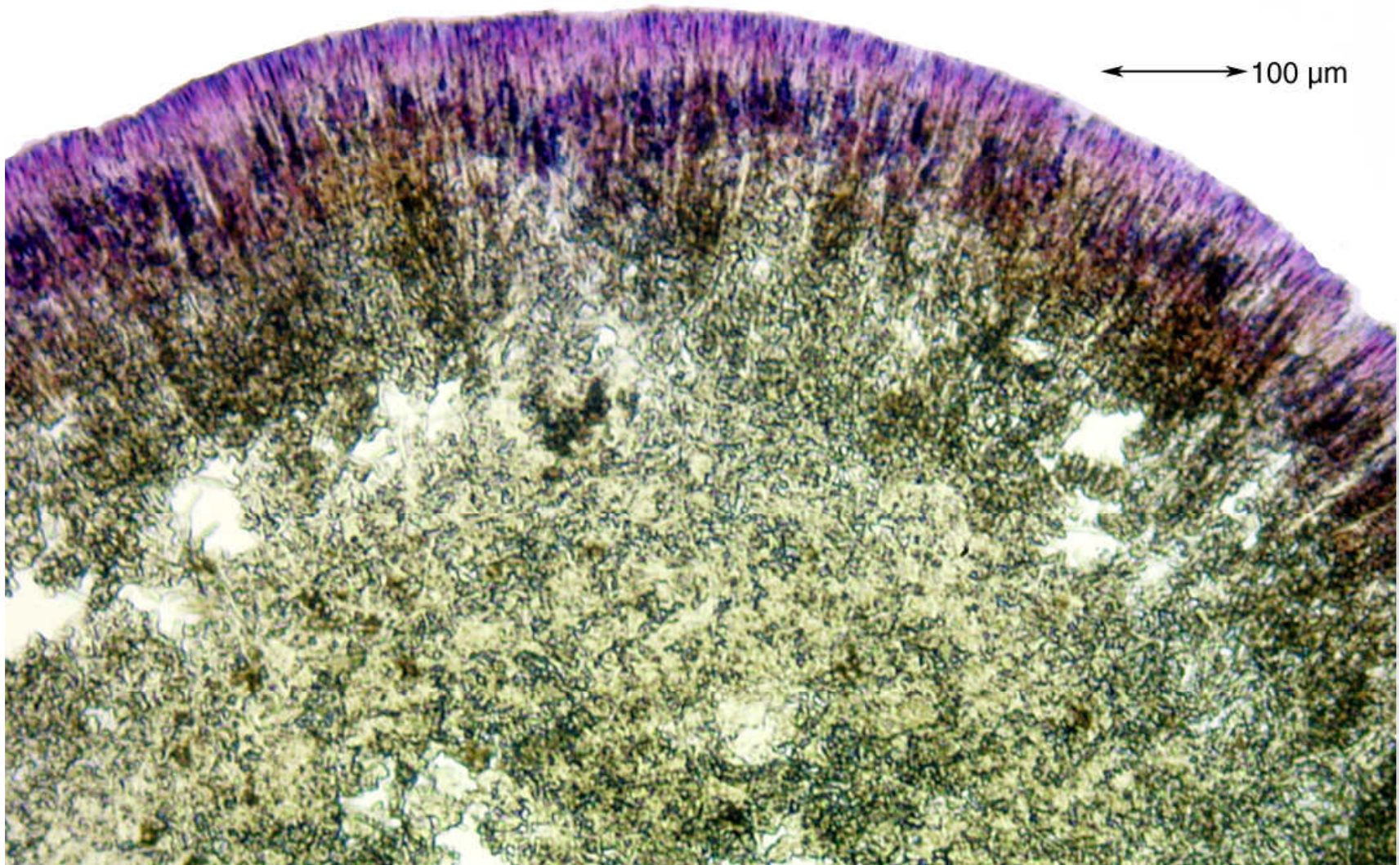
Note. *Roccella tinctoria* sensu most authors.

Thallus saxicolous, grey to brown, rarely sparsely soresiate, texture firm, cylindrical, surface smooth, holdfast internally white to brown. Cortex palisade plectenchyma. Apothecia round. Hypothecium black. Ascospores hyaline, 3-septate, $18\text{--}25 \times 3\text{--}5 \mu\text{m}$. Cortex C + red, K + yellow, Pd –, subcortex C + red, medulla C –, IKI –, major substances erythrin, lecanoric, roccellic. – Angola, Namibia, S. Africa, Madagascar, Madeira.

PORTUGAL, MADEIRA: Ponta de S. Lourenco bei Prahinha östlich Canical, windgefegte Lavablöcke, N $32^{\circ}44.959$, W $16^{\circ}42.521$, 111 m, Leg. Schumm 17.04.2001. [8701]



Roccella africana



Roccella africana