

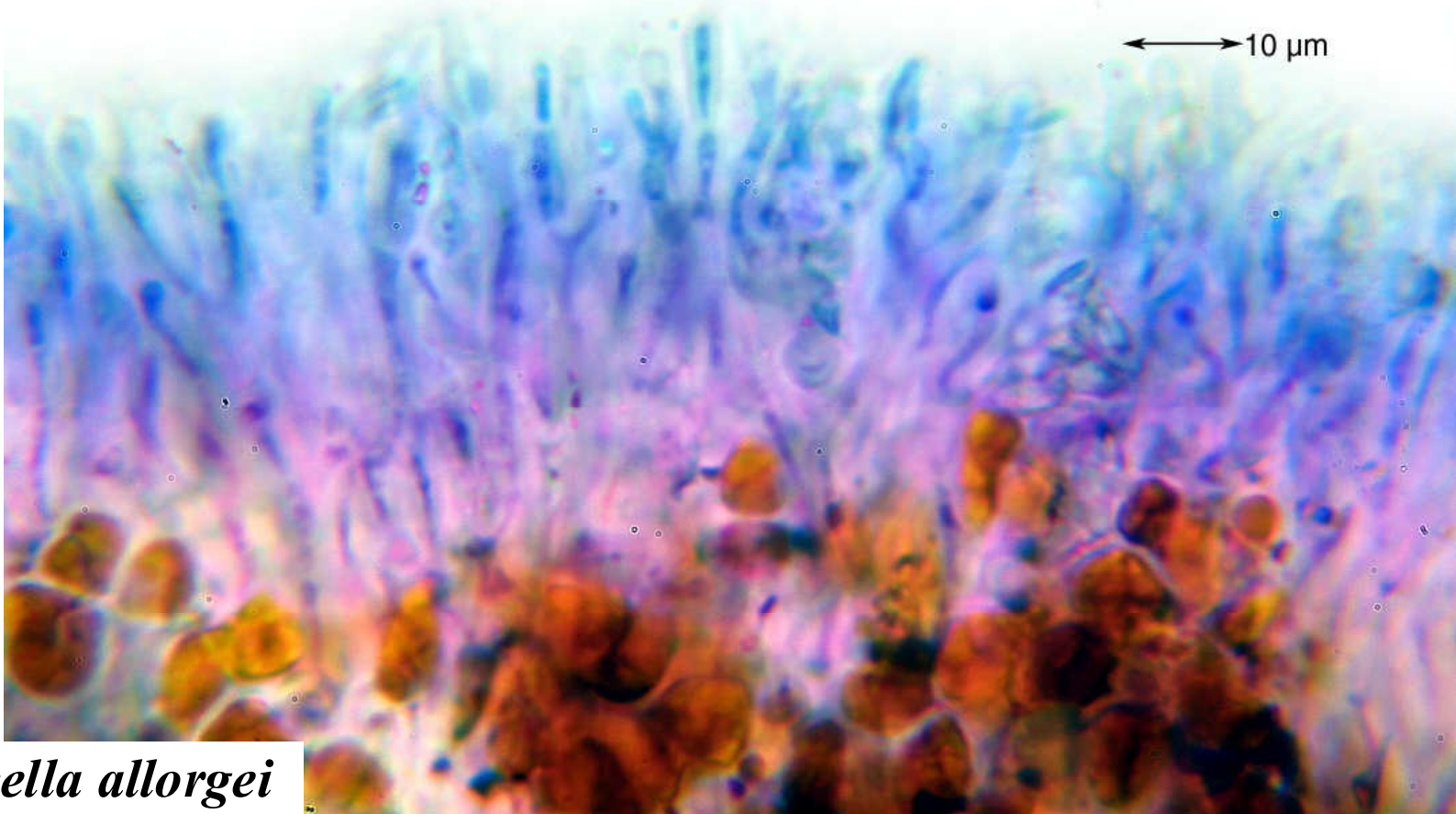
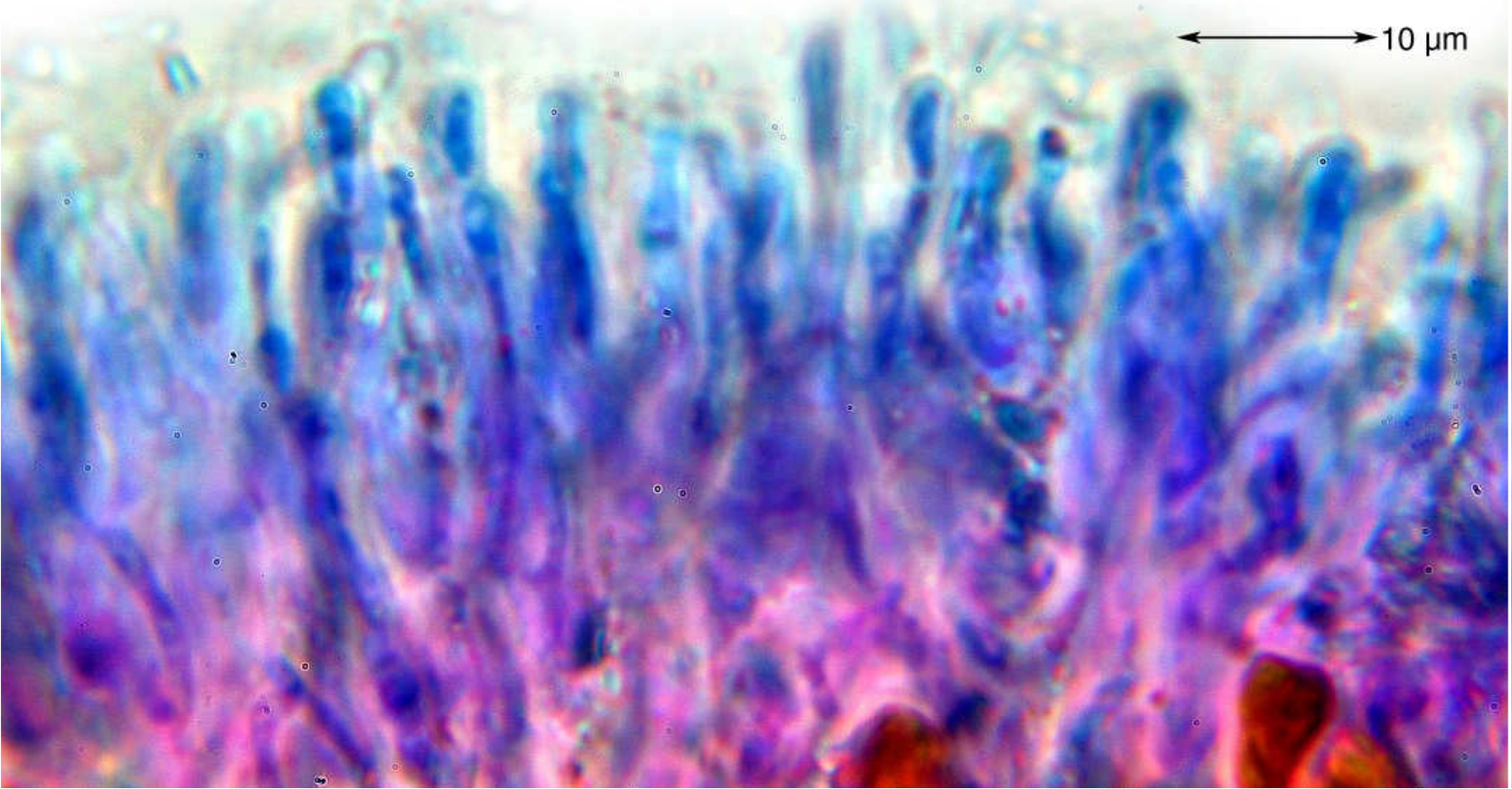
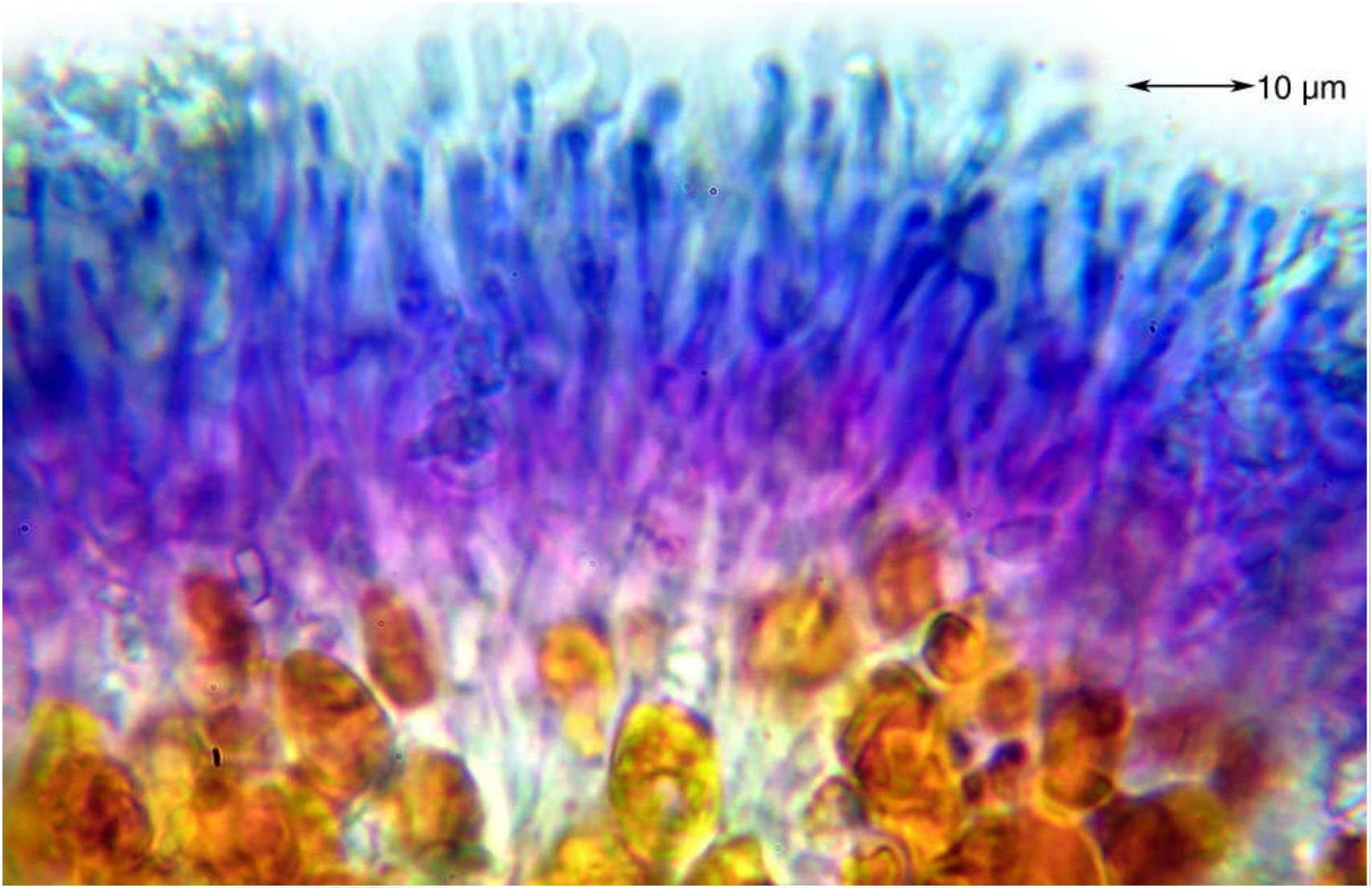
*Roccella allorgei* Abbayes (1947)

Thallus saxicolous, brown, soresiate or not, texture firm, flattened at the basis then cylindrical, surface smooth, holdfast internally white to brown. Cortex intermediate type. Apothecia unknown. Cortex C + red, K + pink, Pd –, subcortex C –, medulla C –, IKI+ violet, soralia if present C + red, major substances erythrin, lecanoric. – Azores, Madeira, Portugal.

Portugal, Azoren, Terceira, beim Hotel Terceira Mar, 38°39.347' N, 27°13.924' W, ca. 8 m, Lavafelsen an der Küste, leg. Aptroot & Schumm 14.07.2008, det. Schumm 30.07.2008. [14133]







*Roccella allorgei*