

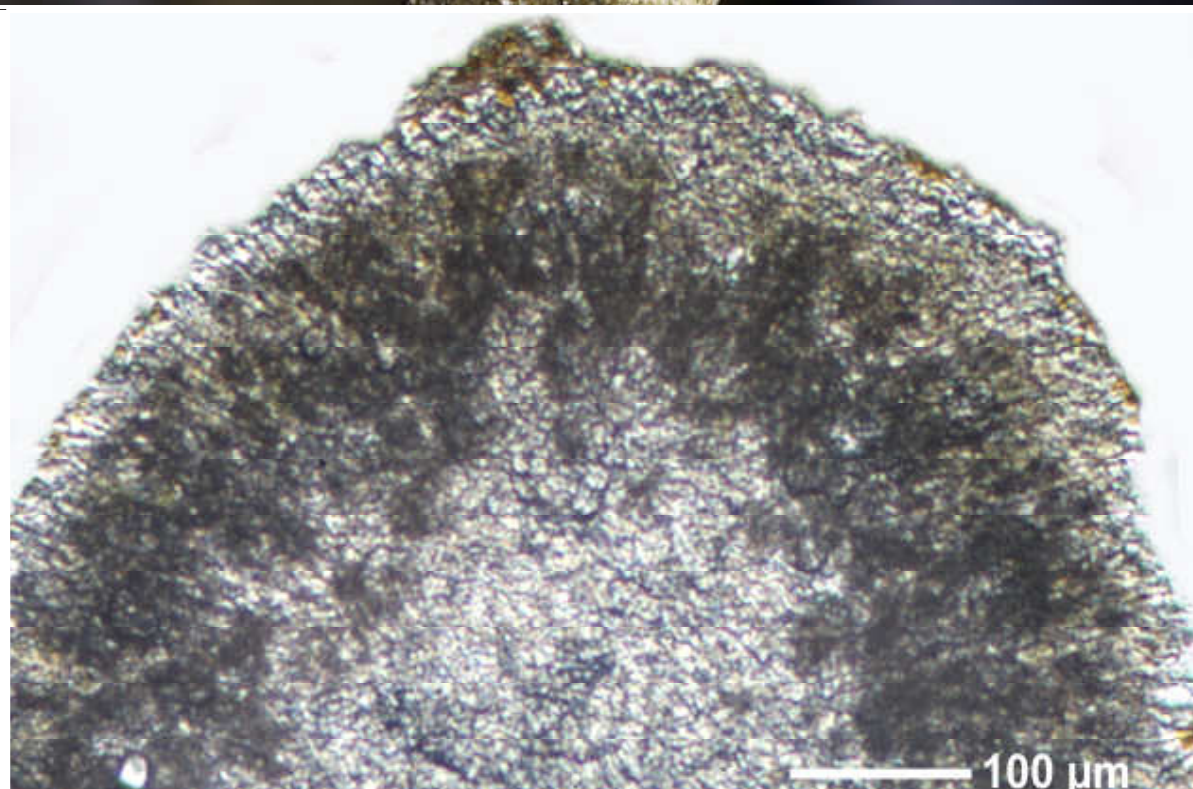
*Roccella balfourii* Müll. Arg. (1882)

*Roccella hertelii* Mies & M. Schultz (2004)

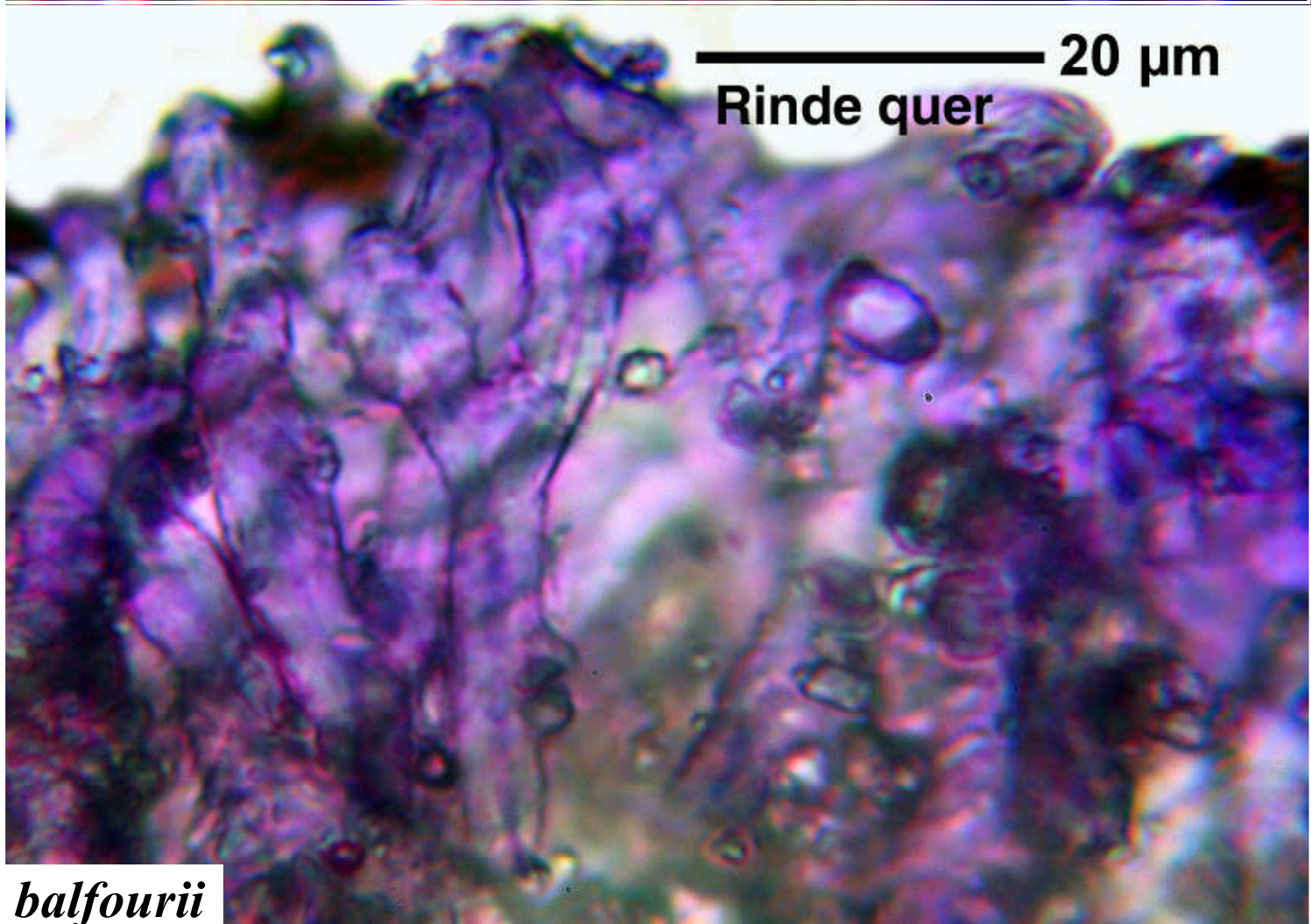
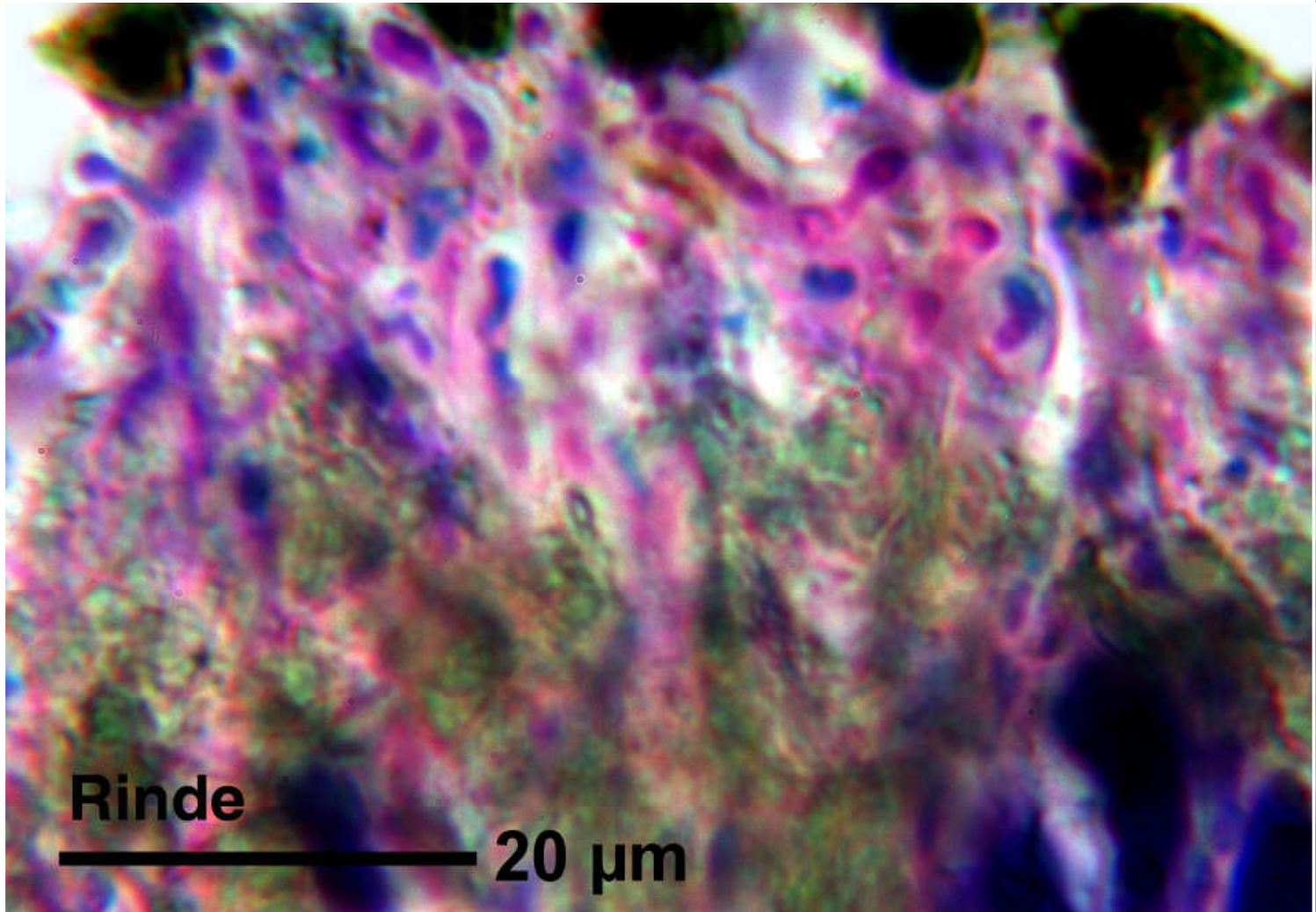
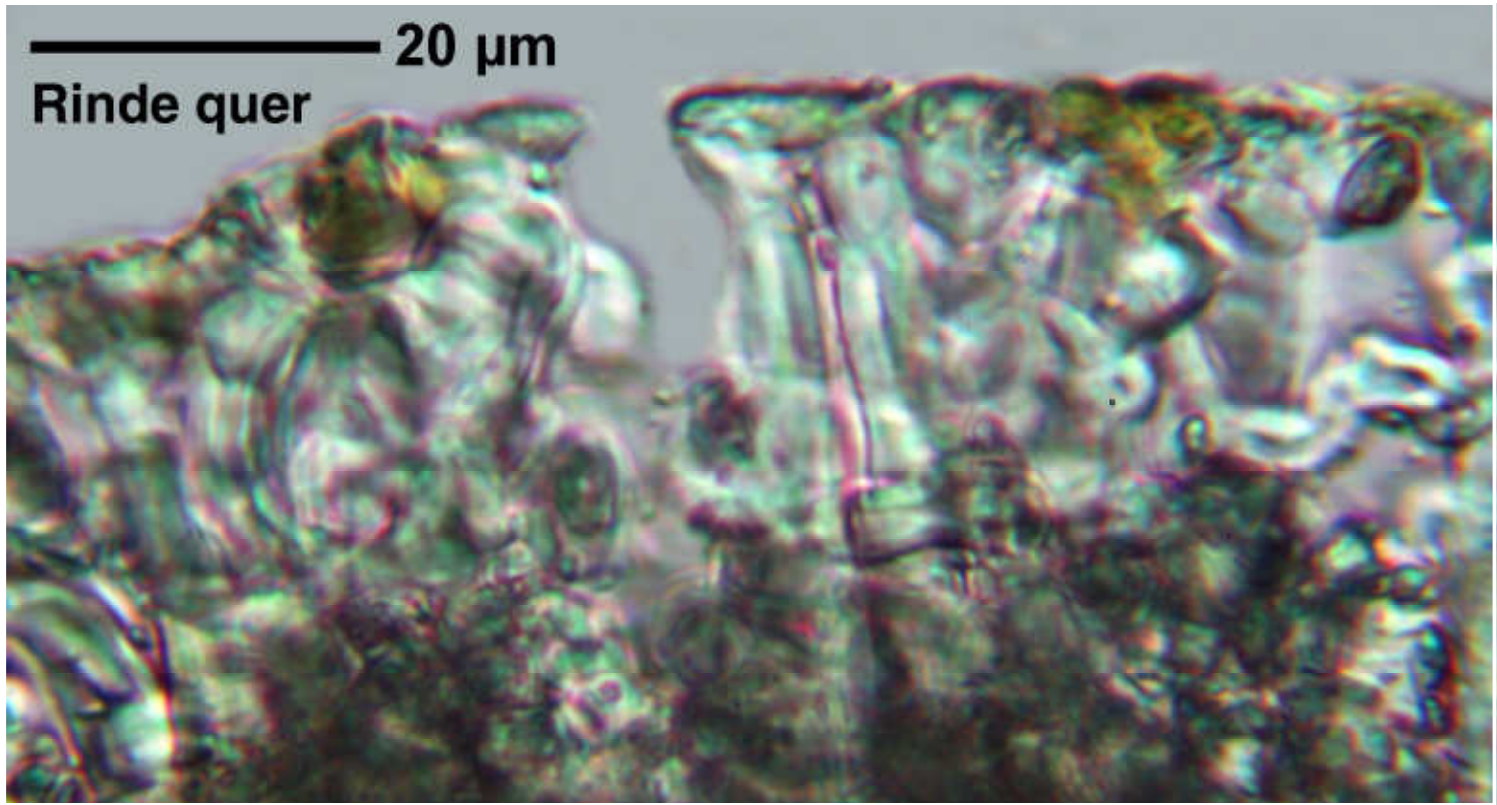
Thallus saxicolous, grey, not soresiate, texture firm, cylindrical, surface smooth, holdfast internally white to brown. Cortex branched type. Apothecia round. Hypothecium black. Ascospores hyaline, 3-septate,  $23\text{--}28 \times 4\text{--}6 \mu\text{m}$ . Cortex C + red, K –, Pd –, subcortex C + red, medulla C –, IKI + violet, major substances erythrin, lecanoric, roccellic. – Socotra & Oman.

Yemen, Socotra (Hadramaut Gov.), Aduno pass above Wadi Kishn, montane evergreen woodland with boulders, c- 1000 m, on granite, c.  $12^{\circ}34'20''\text{N}$ ,  $54^{\circ}02'40''\text{E}$ , leg. 26.03.2002 M.Schultz, det. 18.06.2004 M.Schultz (as *Roccella hertelii*) [MS 14298d]

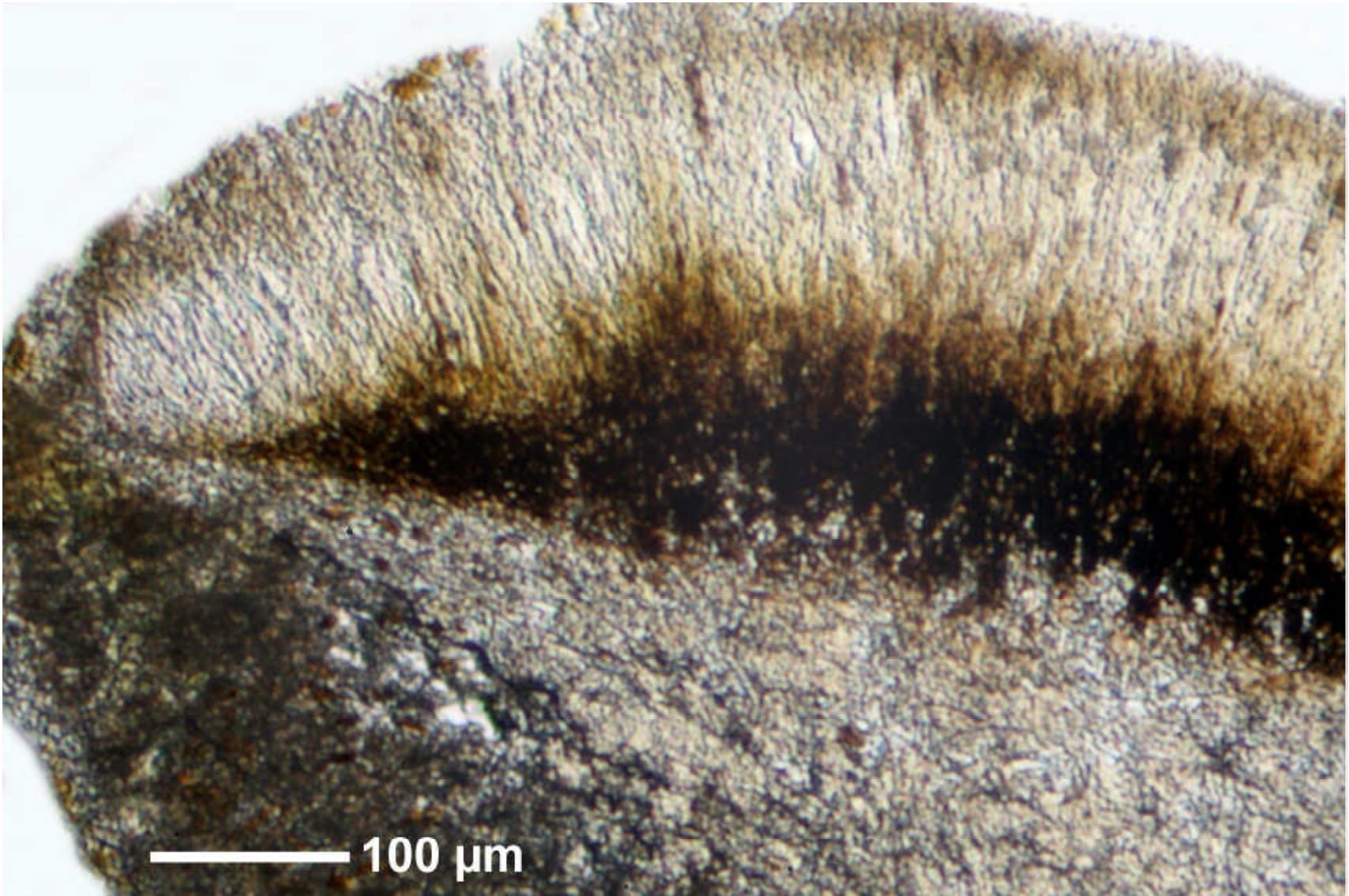




*Roccella balfourii*



*Roccella balfourii*



*Roccella balfourii*