

*Roccella decipiens* Darb. (1897)

*Roccella cacticola* Darb. (1897)

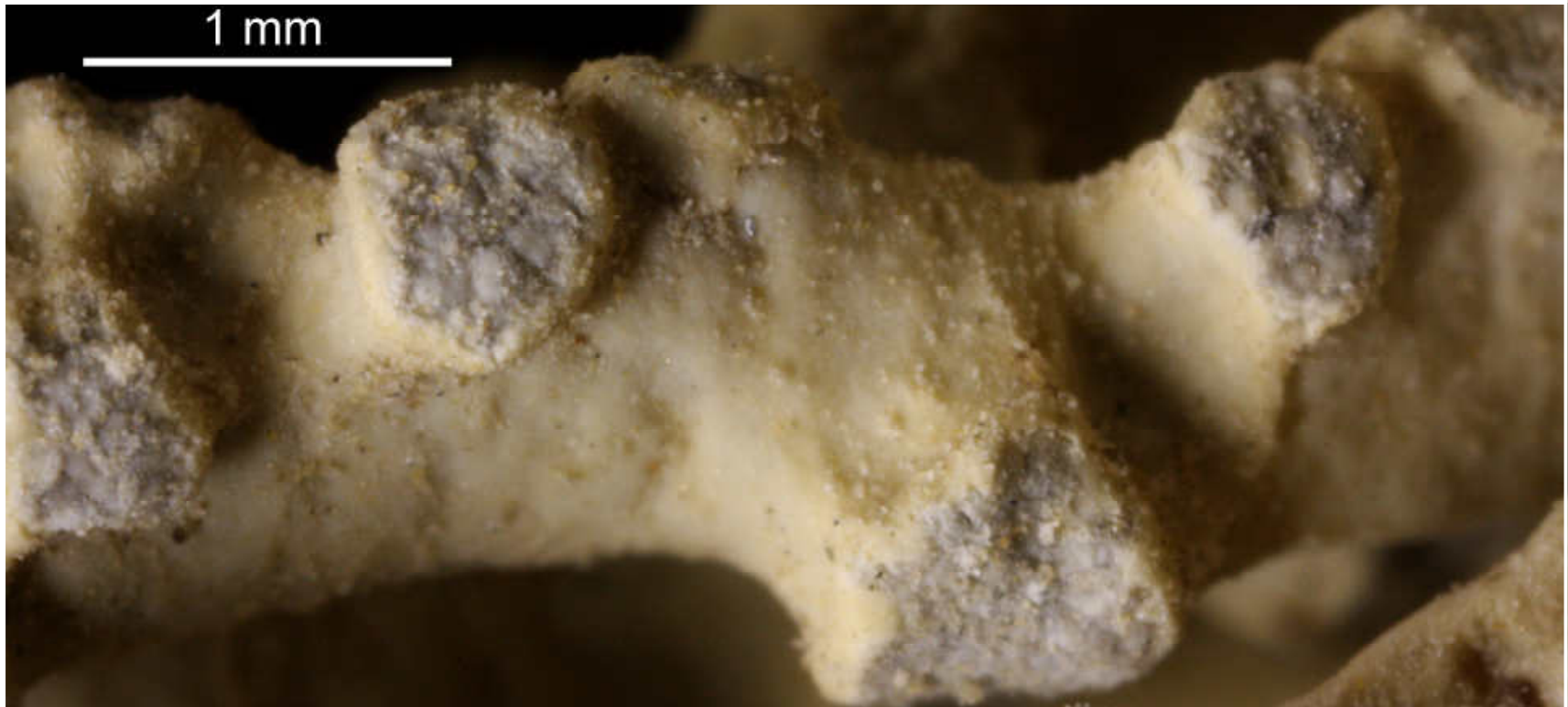
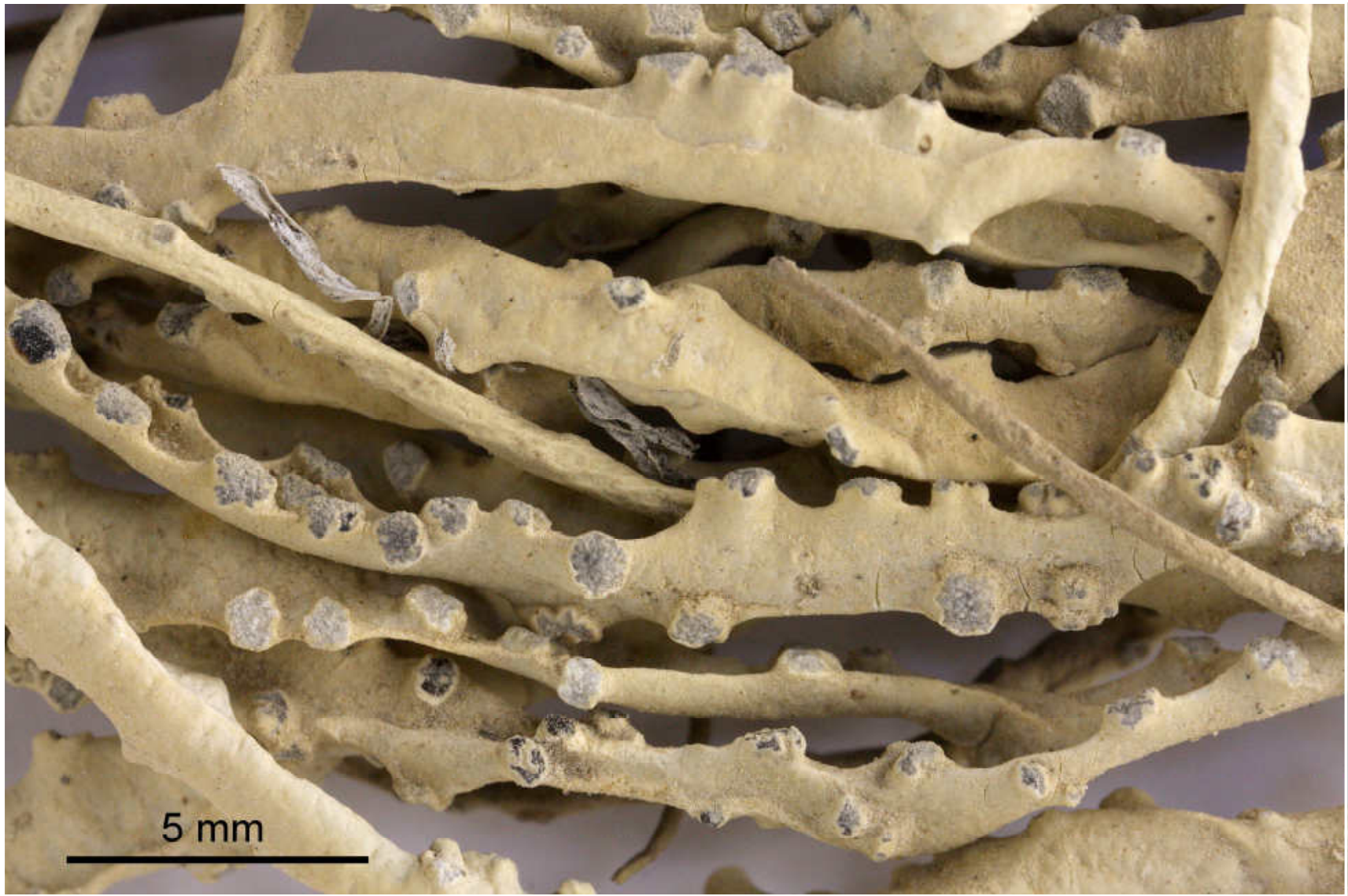
*Roccella fimbriata* Darb. (1935)

Thallus saxicolous, grey, not soresiate, texture firm, applanate, surface smooth, holdfast internally yellow to brown. Cortex palisade plectenchyma. Apothecia round. Hypothecium black. Ascospores hyaline, 3-septate,  $23\text{--}27 \times 5\text{--}7 \mu\text{m}$ . Cortex K –, C + red, KC + red, Pd –, subcortex K –, C + red, KC –, P –, medulla K –, C –, KC –, Pd –, IKI+ violet, major substances erythrin,  $\pm$  lecanoric. – Mexico, California.

Mexico: Baja California Sur, Cape San Lucas Province, Punta Lobos south of Todos Santos, nest-like at eye-level in thickets of larger spiny shrubs, 5-10 m elevation, NW-SW exposition, gregarious. Leg. G. Follmann & M. Schulz Jan 1989. Lichenes Exsiccati Selecti Ab Instituto Botanico Universitatis Coloniensis Editi Nr. 448 (as *Roccella fimbriata*). [14012]

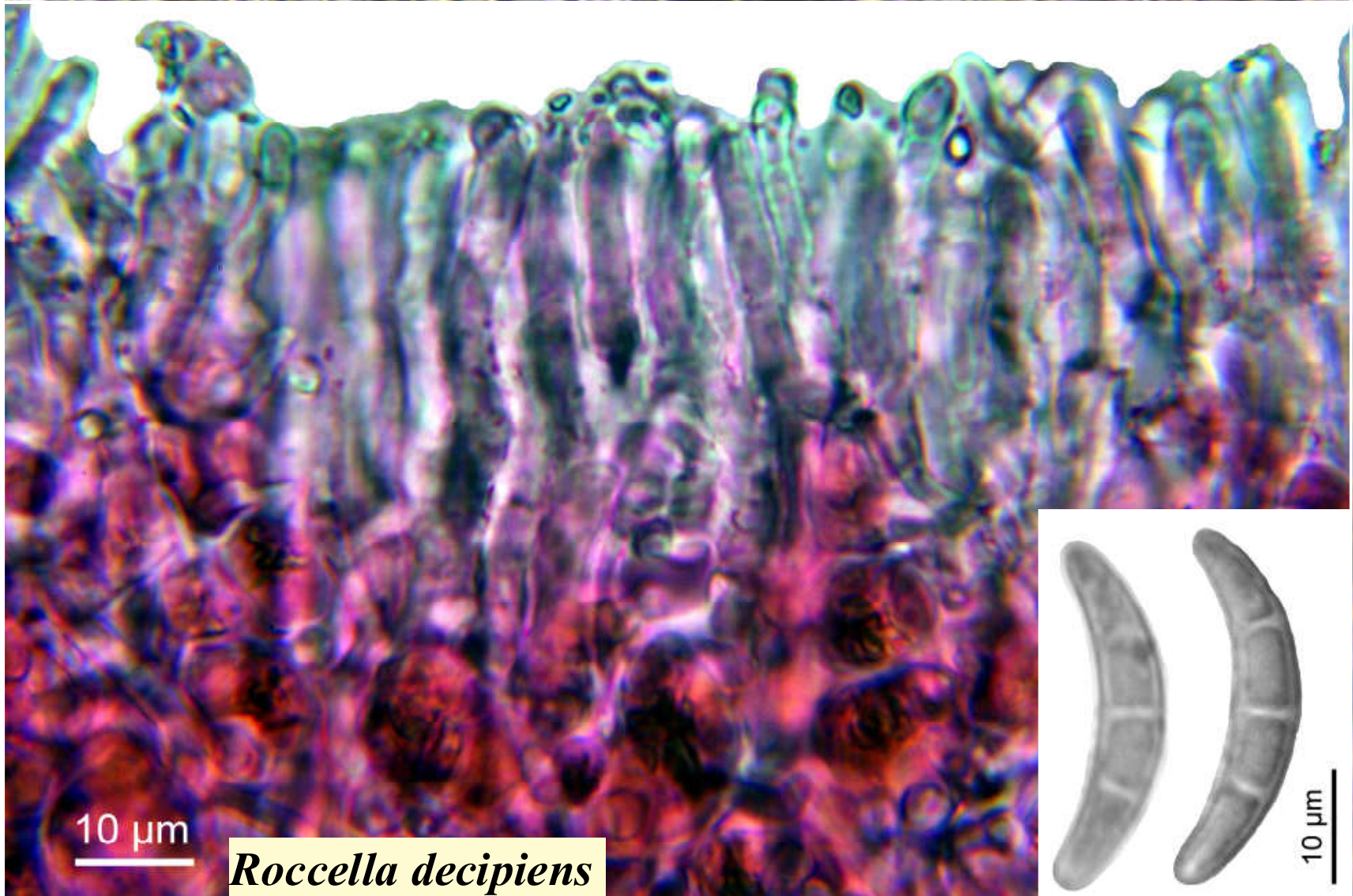
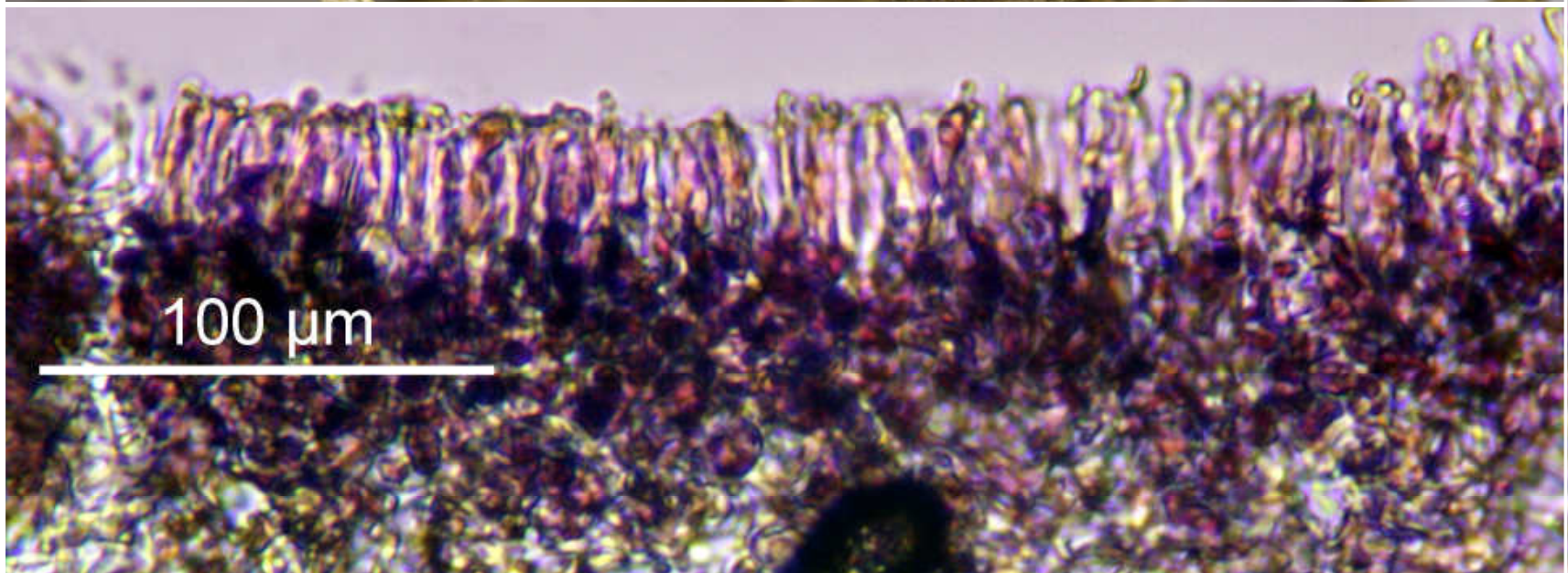






*Roccella decipiens*





*Roccella decipiens*