

*Roccella elisabethae* Tehler (2004)

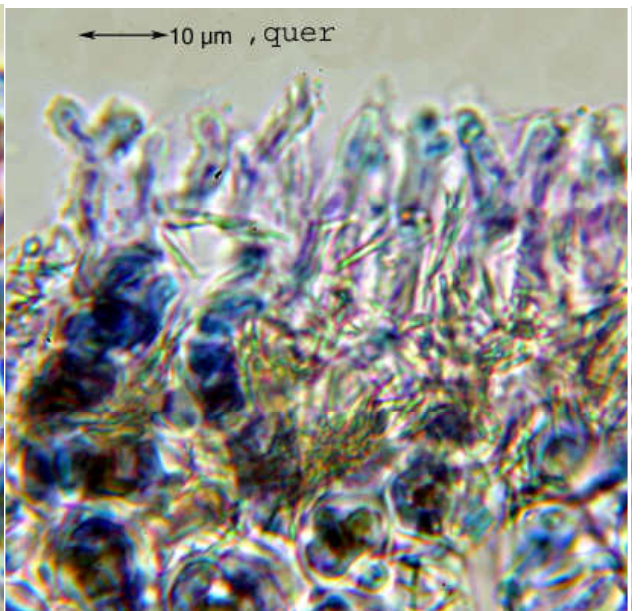
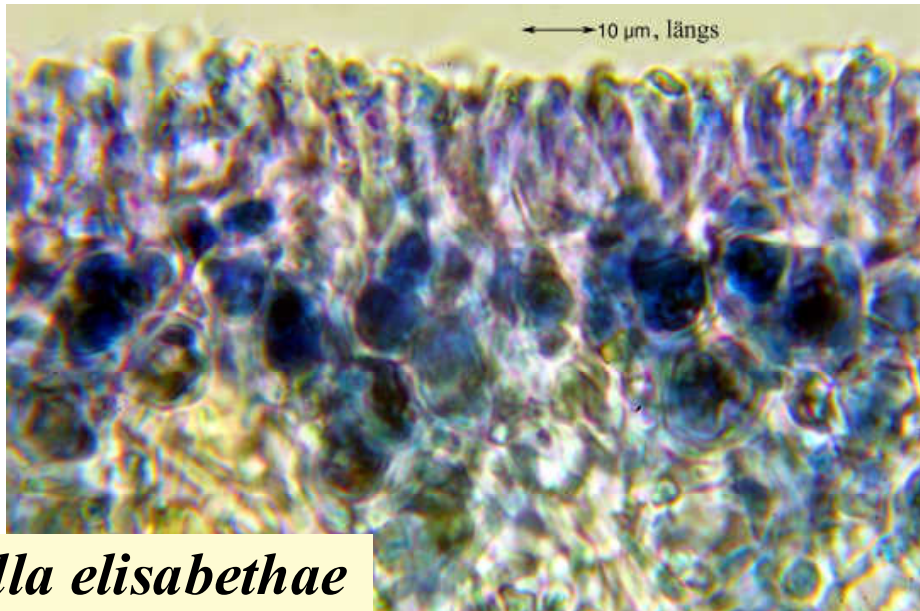
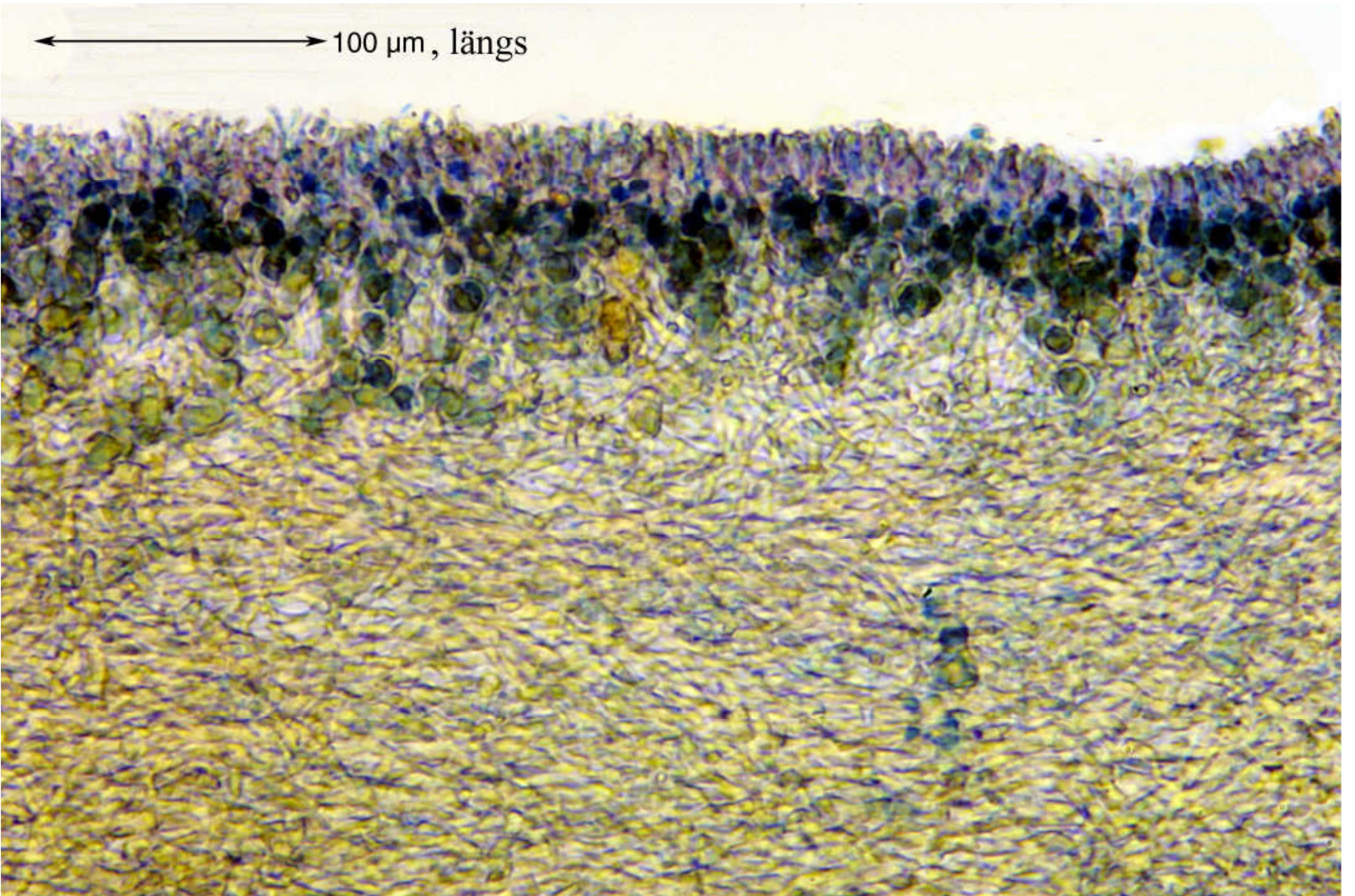
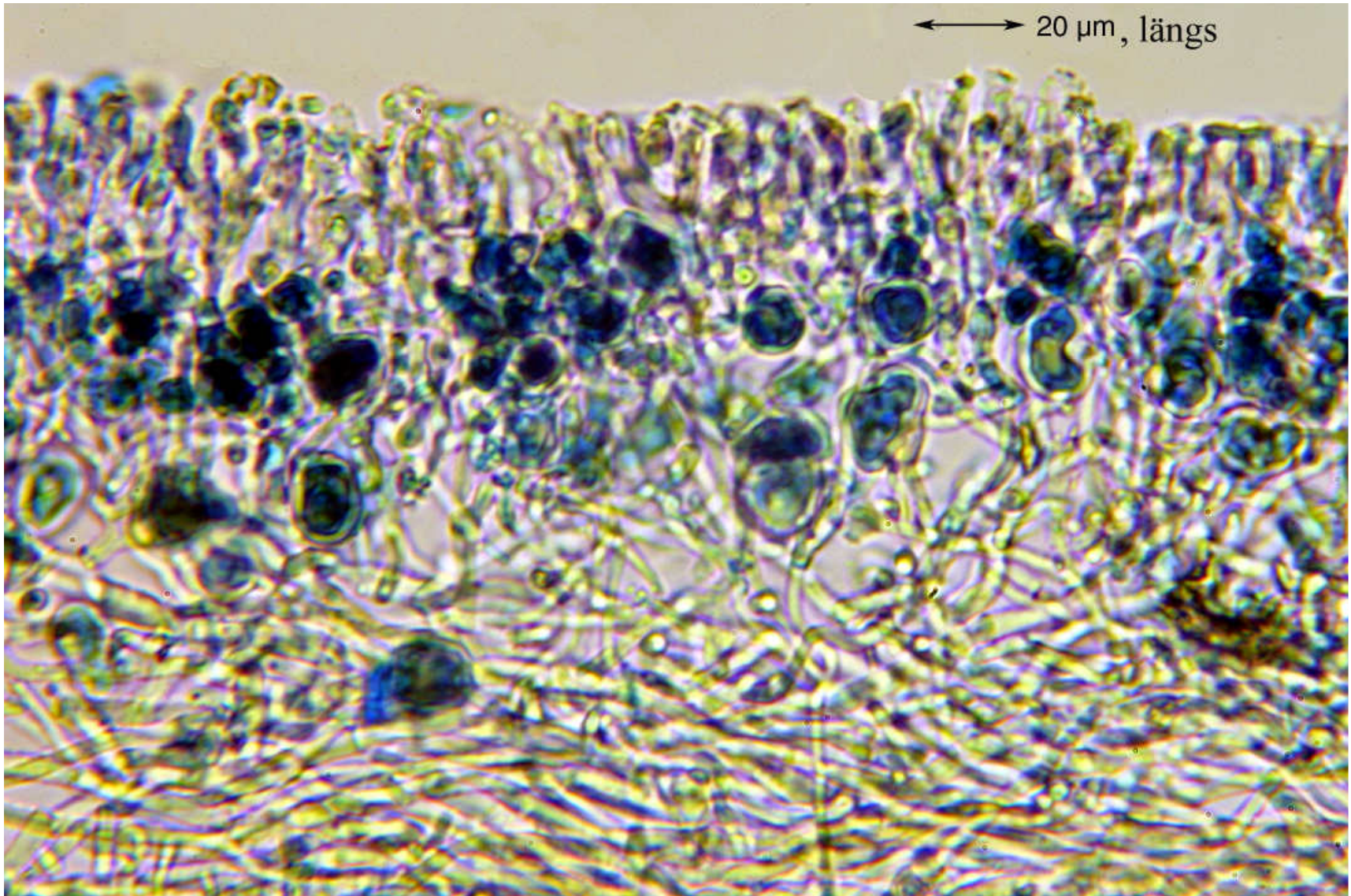
Note: *Roccella arnoldii* *sensu* most authors

Thallus saxicolous, brown, sorediate, texture firm, cylindrical, surface smooth, holdfast internally white to brown. Cortex more or less palisade plectenchyma. Apothecia unknown. Cortex C + red, K –, Pd –, subcortex C –, medulla C –, K –, P –, IKI+ violet, soralia C + red, major substance lecanoric. – Azores, Madeira, Canary Isles, W. Mediterranean Europe.

Spanien, Gran Canaria, Barranco de Los Tilos südlich Moya; N 28°04.766, W 15°35.935, Höhe 620 m. Leg et det. Schumm 16.12.1999. [5254]







*Roccella elisabethae*