

*Roccella galapagoensis* Follmann (1968)

*Roccella capitata* Werner (2000)

*Roccella colonii* Follmann (2001)

*Roccella fusca* Werner (2000)

*Roccella geniculata* Follmann & B. Werner (2000)

*Roccella obscurissima* Follmann & B. Werner (1998)

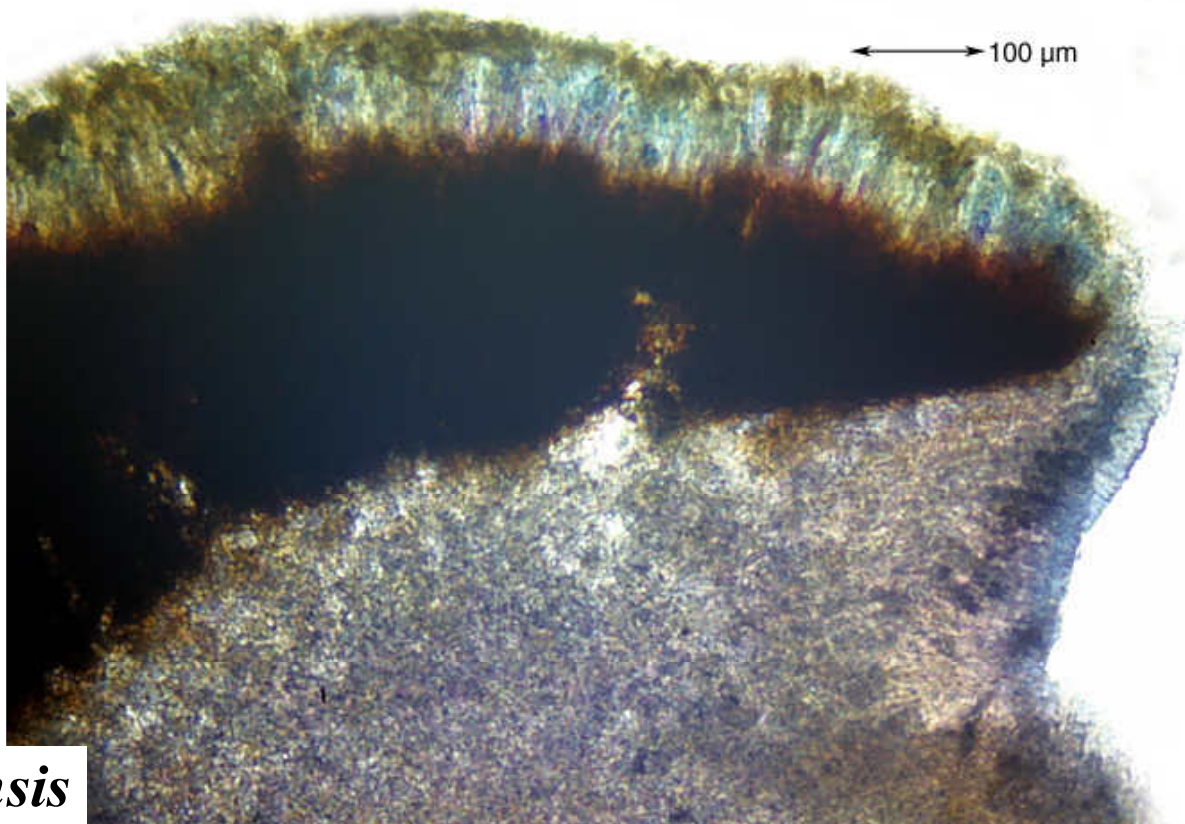
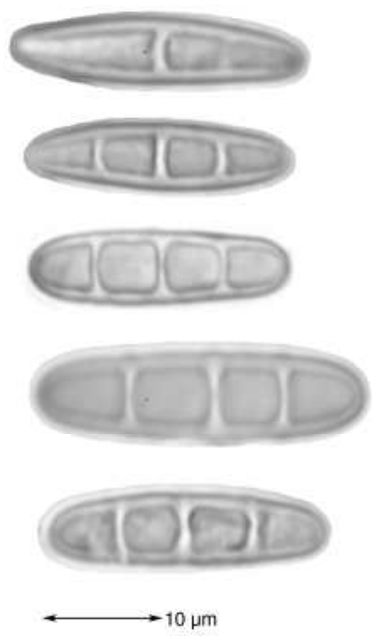
*Roccella scoparia* Follmann ex Tehler (2007)

Thallus saxicolous, grey, not sorediate, texture firm, cylindrical, surface reticulate, holdfast internally white to brown. Cortex palisade plectenchyma. Apothecia round. Hypothecium black. Ascospores hyaline, 3-septate,  $22\text{--}28 \times 5.5\text{--}7 \mu\text{m}$ . Cortex C + red or –, K – or + yellow, Pd – or + orange, subcortex C –, medulla C –, IKI –, major substances galapagin, ± erythrin, ± lecanoric, ± protocetraric, ± portentol. – Galapagos.

Ecuador, Galápagos Islands, Isabela Island, Cerro Alcedo, cinder cones along the trail going up the E-slope (ISA 23); arid lowlands, basalt outcrops, at the bottom scattered *Bursera graveolens* trees and shrubs of *Castla galapageia*,  $0^{\circ}23'40''\text{S}$ ,  $91^{\circ}1'18''\text{W}$ , alt. 190 m. Leg. A. Aptroot 10.03.2006. [ABL64718]

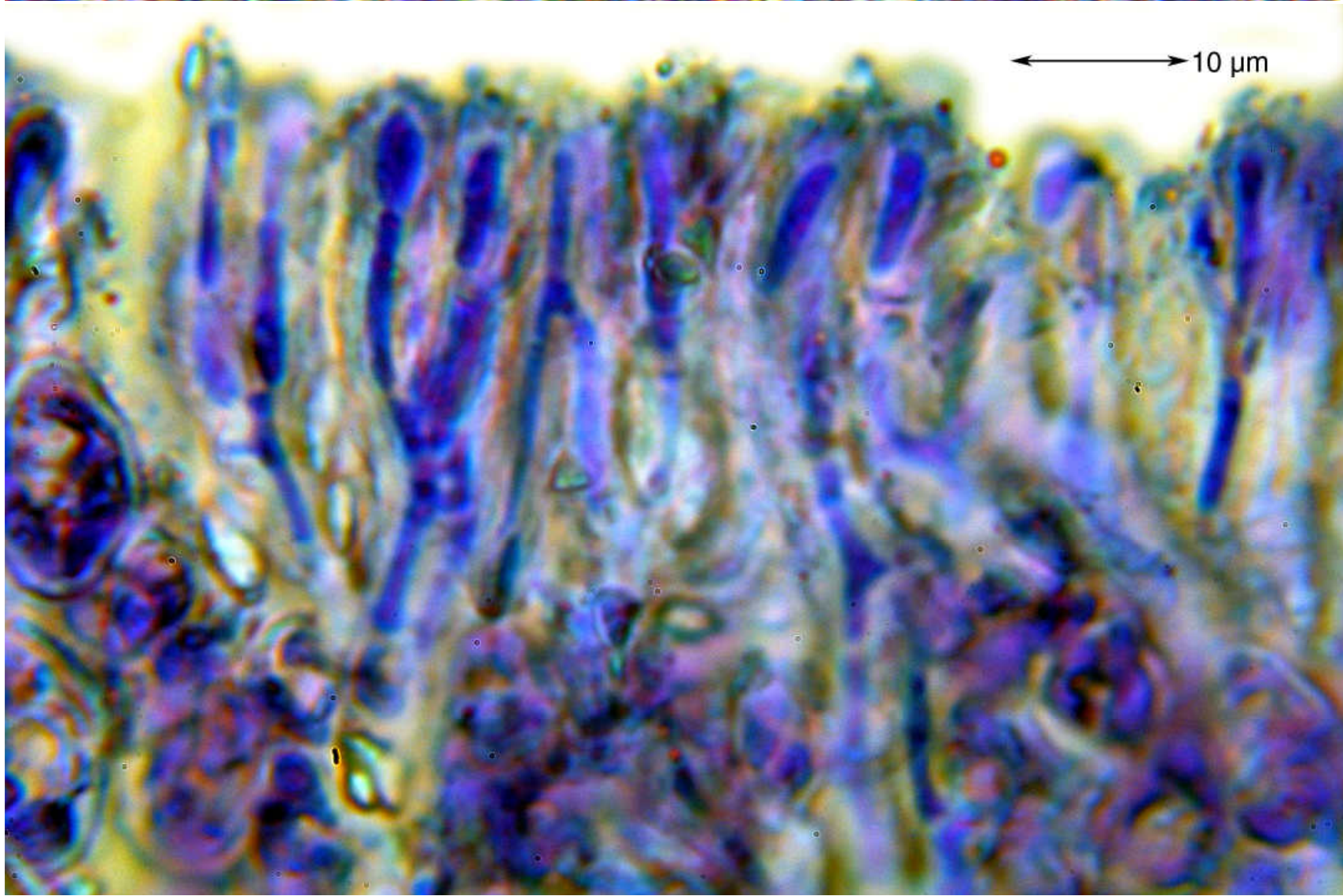
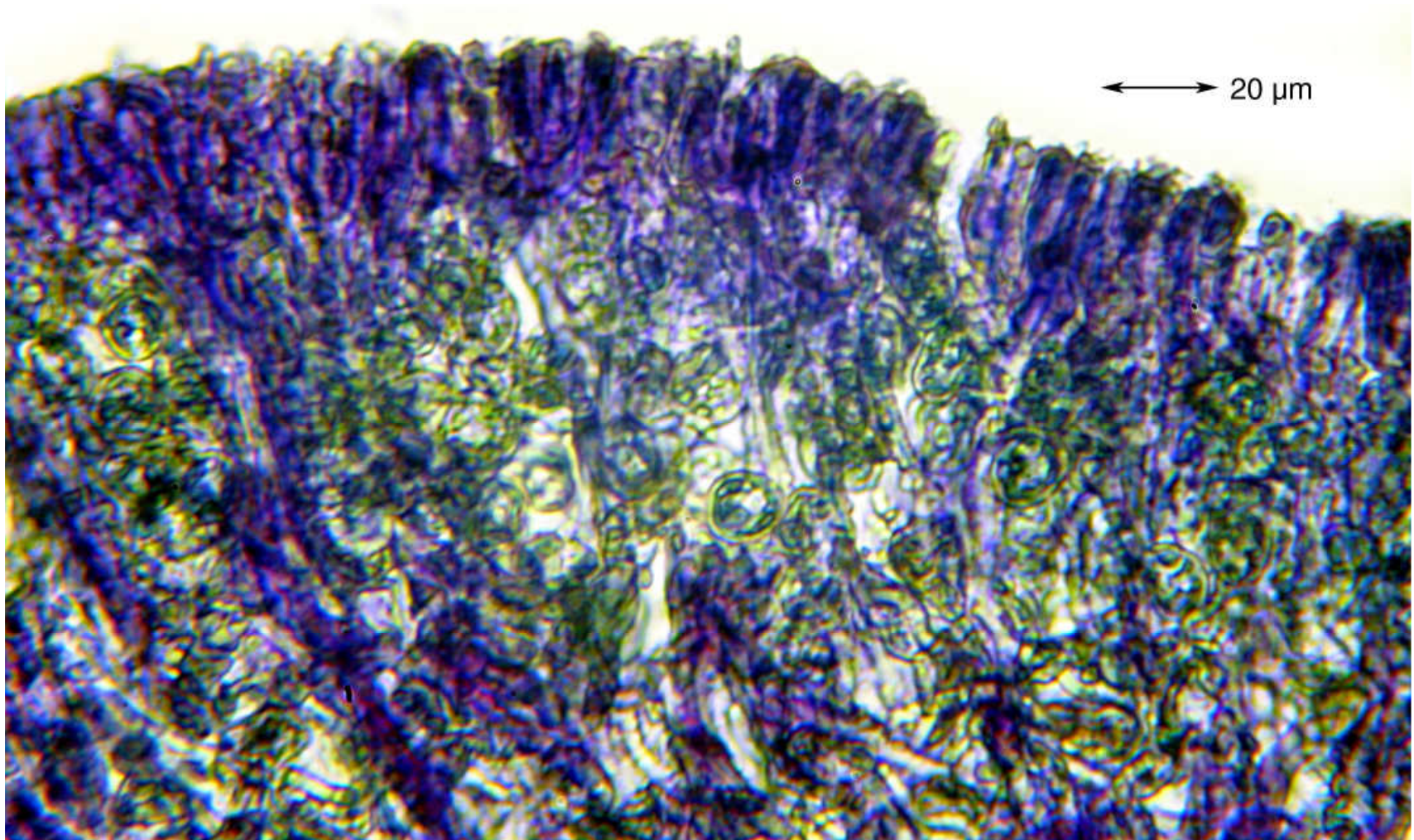






*Roccella galapagoensis*

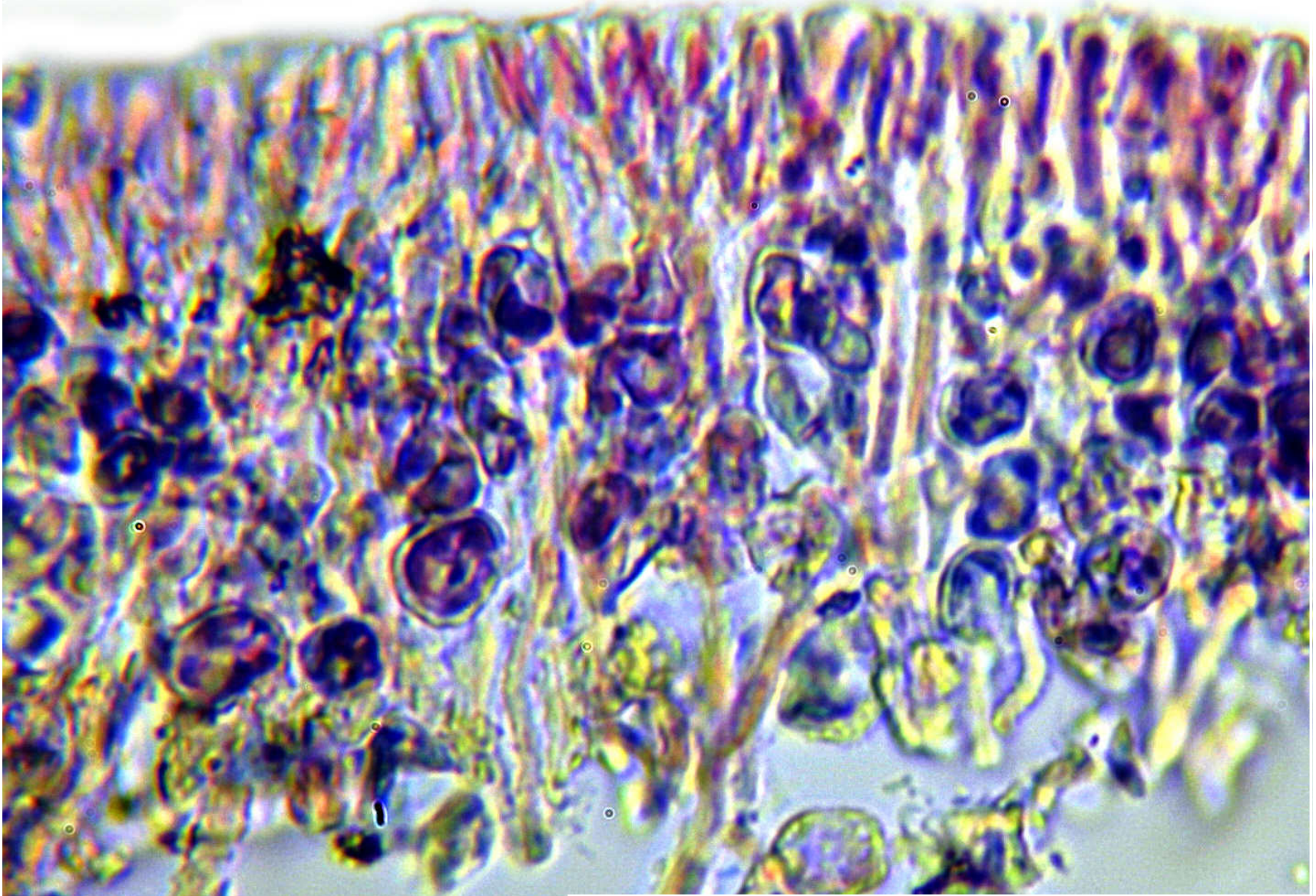




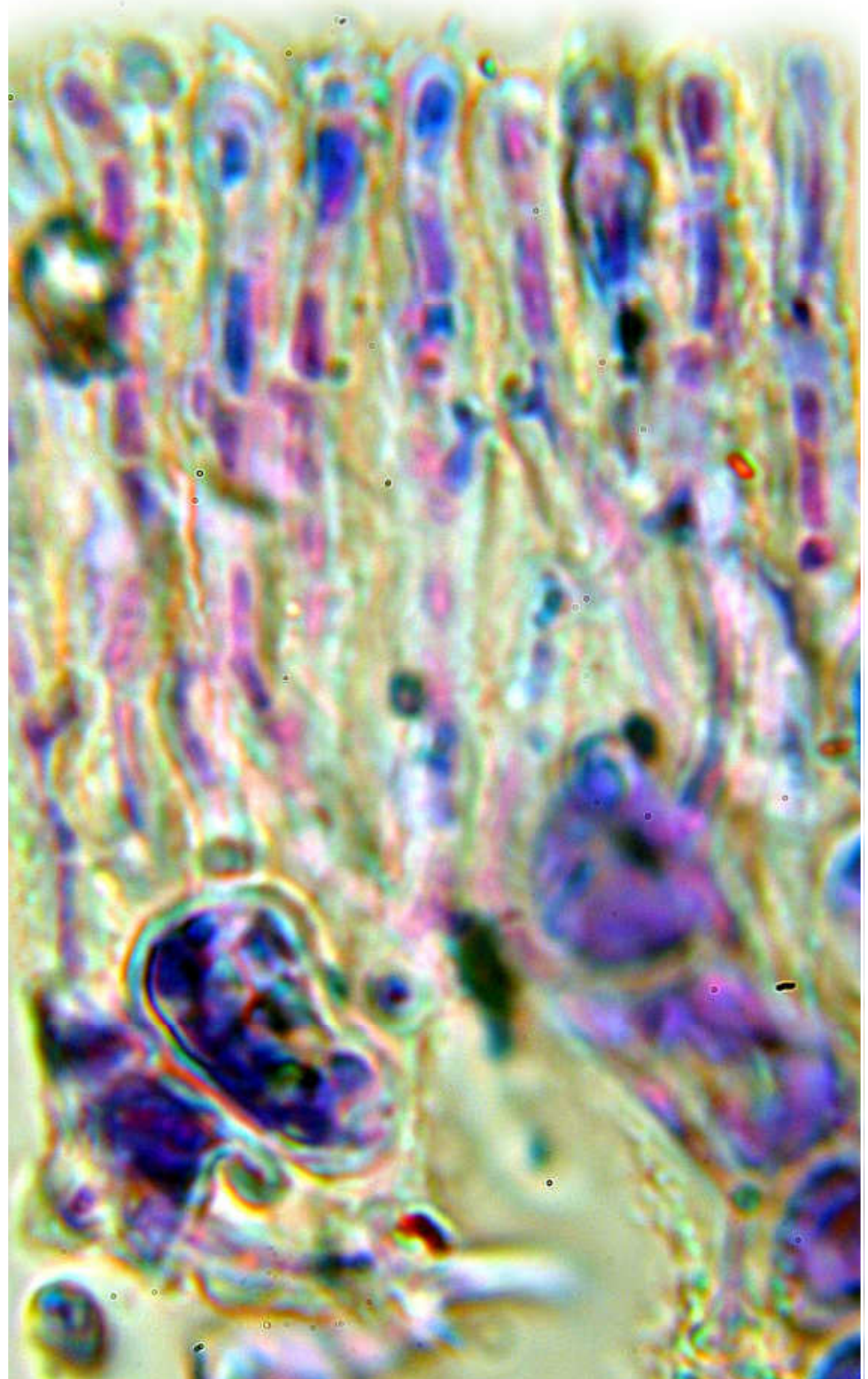
*Roccella galapagoensis*



←→ 20 μm



←→ 10 μm



*Roccella galapagoensis*