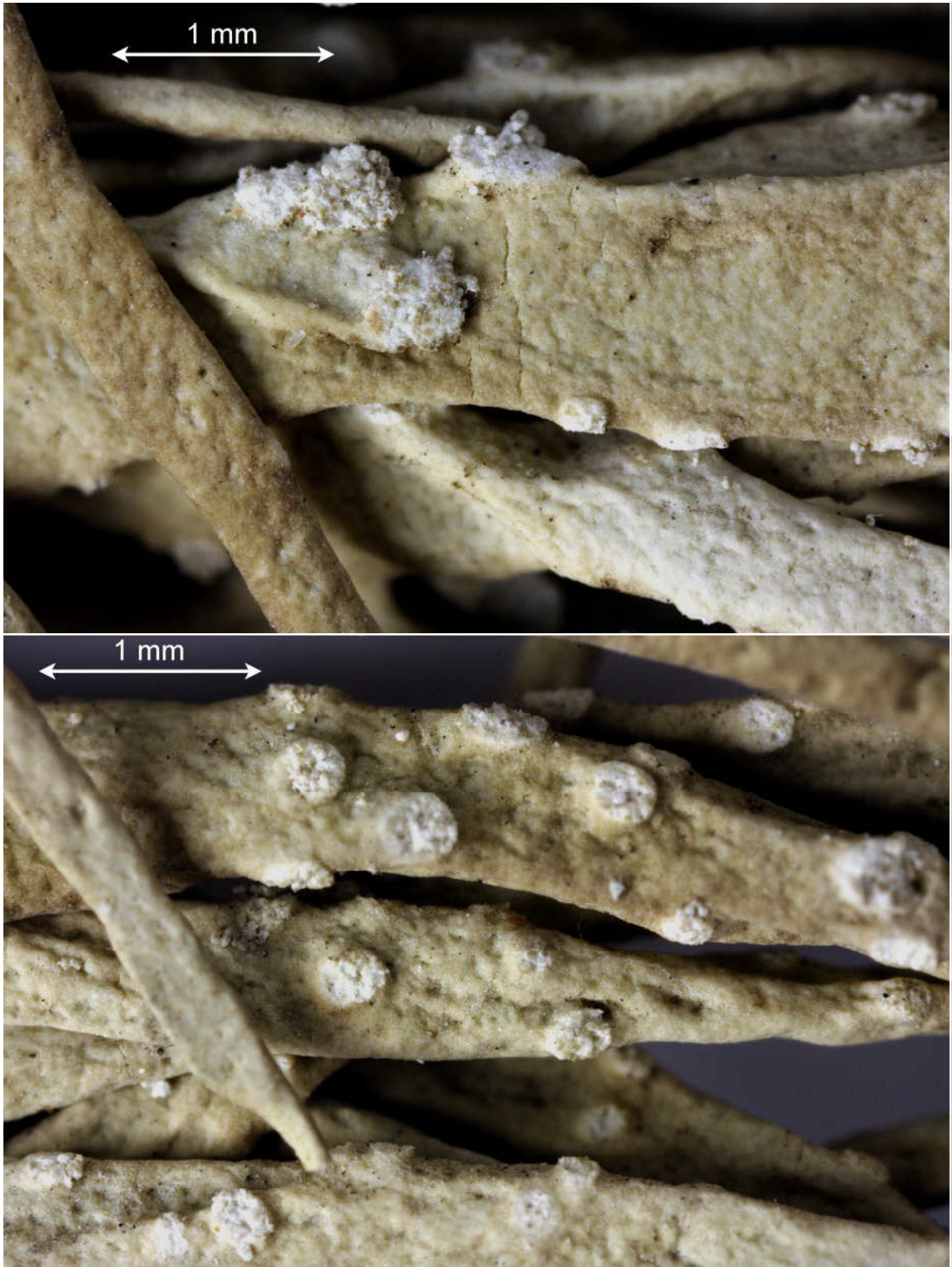


Roccella gracilis Bory (1828)
Roccella americana Darb. (1898)
Roccella babingtonii var. *difficilis* (Darb.) B. Werner (2000)
Roccella difficilis Darb. (1898)
Roccella fruticosa Leunis & Frank (1886)
Roccella humboldtiana Follmann (2001)
Roccella mexicana Vain. (1926)
Roccella montagnei var. *argentina* Kremp. ex Darb. (1898)
Roccella montagnei var. *peruensis* Kremp. (1877)
Roccella montagnei var. *peruviensis* Kremp. in Müll. Arg. (1879)
Roccella peruensis (Kremp.) Darb. (1898)
Roccella ramalinoides Bory (1828)
Roccella tinctoria var. *gracilis* van Hall ex Darb. (1898)

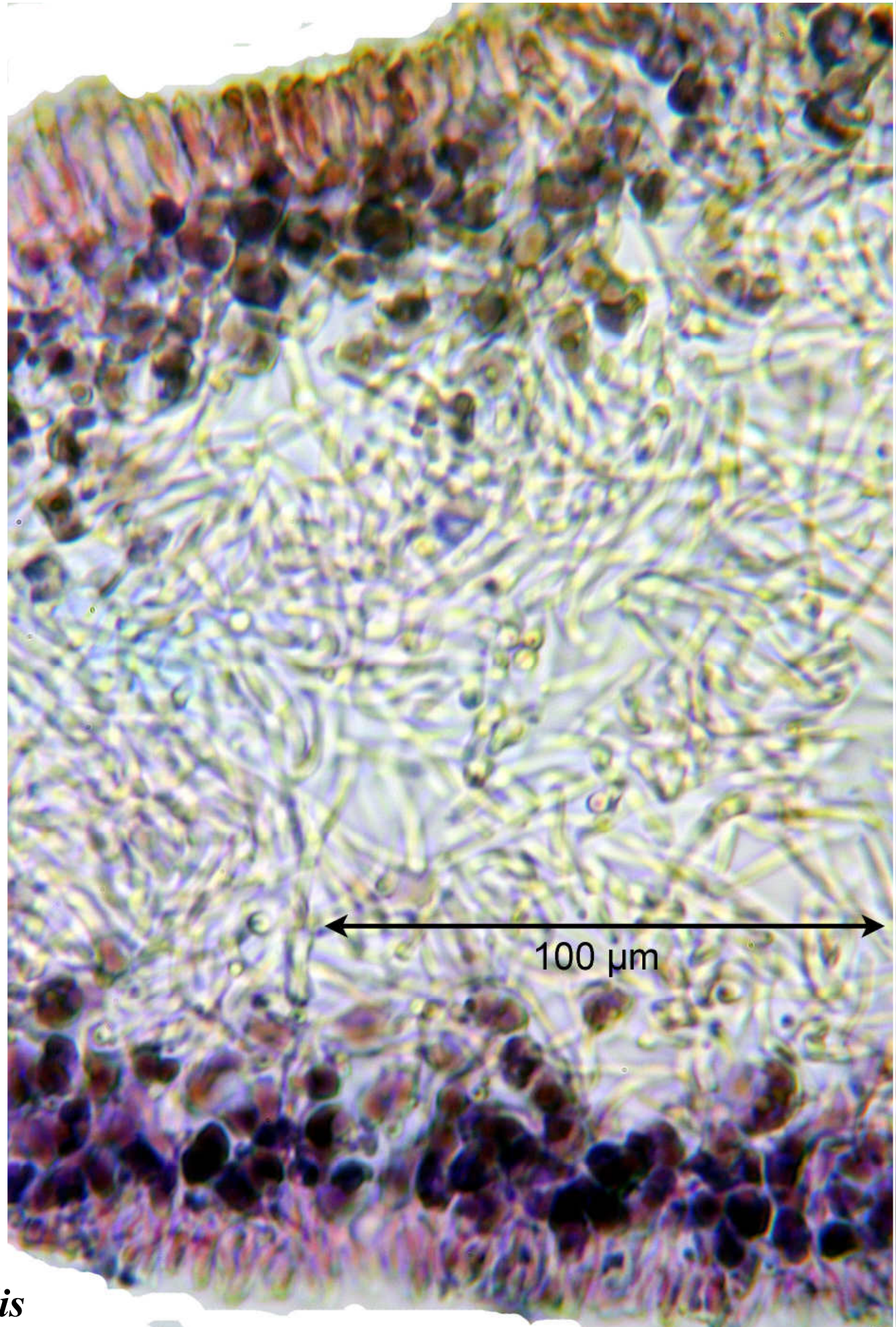
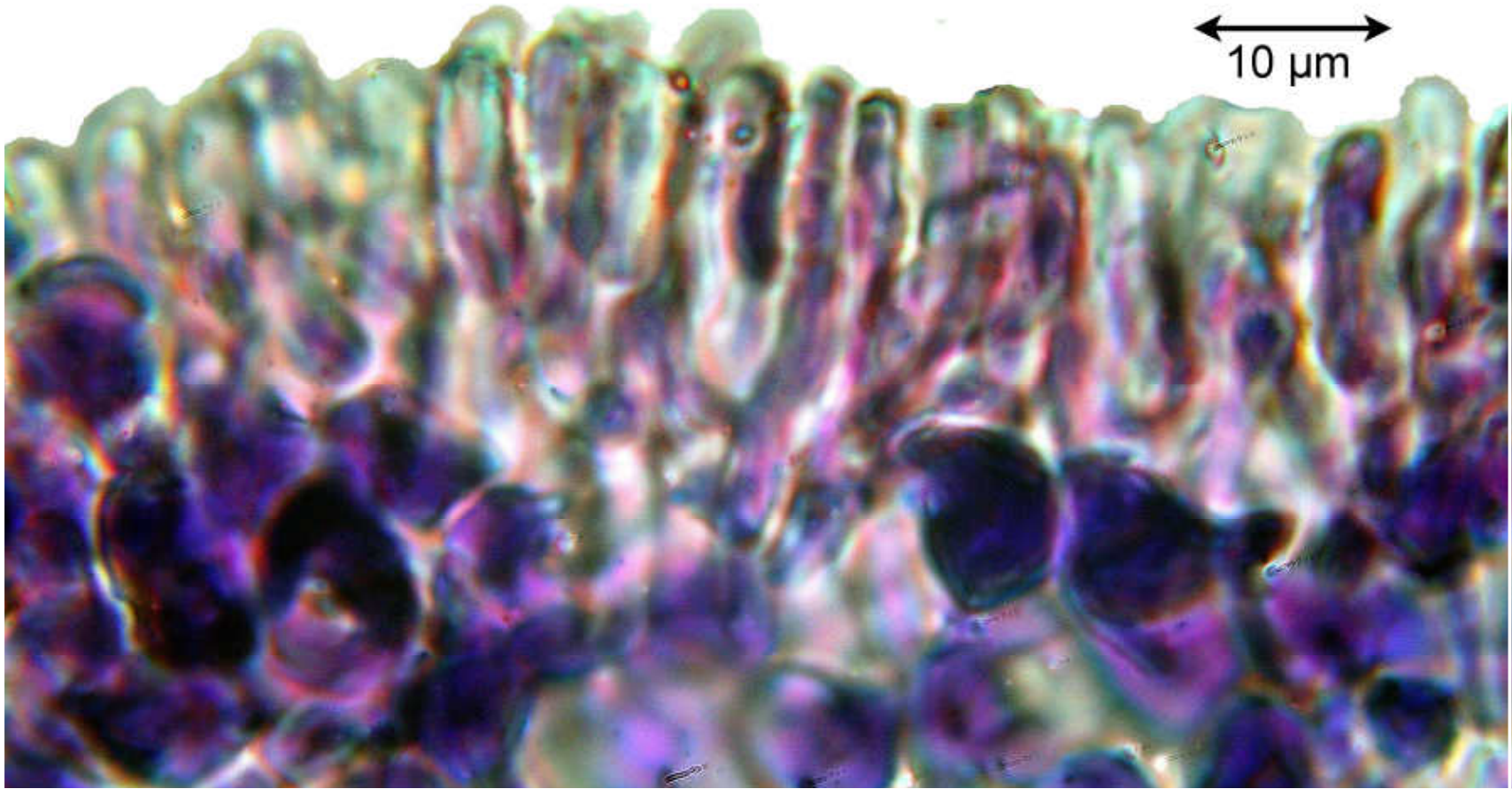
Thallus corticolous, grey, soresiate, texture soft, applanate, surface ridged, holdfast internally yellow. Cortex palisade plectenchymatous. Apothecia unknown. Cortex C + red, K –, Pd –, subcortex C –, medulla C –, IKI+ violet, soralia C + red, major substances erythrin, lecanoric, ± roccellic. – Ecuador, Galapagos, Venezuela, many Caribbean Islands, Mexico, California.

Mexico: Baja California. Coastal sand dune, area adjacent to El Socorro Agave; on *Ephedra*; 30°19'5"N, 115°49'35"W, ca. 20 m. Leg. T.H. Nash III Nr. 40168 29. Dec. 1997, (as *Roccella babingtonii*). [9427]





Roccella gracilis



Roccella gracilis