

*Roccella linearis* (Ach.) Vain. (1901)

*Roccella fuciformis* var. *gracilentata* Vain. ex Darb. (1898)

*Roccella fuciformis* var. *linearis* Ach. (1810)

*Roccella linearis* var. *guineensis* Vain. (1901)

*Roccella linearis* var. *hyperchromatica* Vain. (1901)

*Roccella linearis* var. *primaria* Vain. (1901)

*Roccella mauritiana* Darb. (1898)

*Roccella montagnei* var. *rigidula* Müll. Arg. (1879)

*Roccella pattensis* C.W. Dodge (1964)

*Roccella pembensis* C.W. Dodge (1964)

Thallus saxicolous, grey, soresiate, texture firm, angular, surface foveolate, holdfast internally white to brown. Cortex more or less a palisade plectenchyma. Apothecia unknown. Cortex C + red, K + yellow, Pd –, subcortex C –, medulla C –, P –, IKI + violet, soralia C + red, IKI –, Pd –, major substances erythrin, lecanoric. – Palaeotropic coasts from Papua New Guinea over India to W. Africa, Cape Verde Islands, Ascension, St Helena.

Papua New Guinea, Central prov., along the coast of the Hiritano Highway, Hisiu, Obo Mission, 100 km NE of Port Moresby, 146°39' E, 9°02' S, alt. 0-5 m. Leg. A.Aptroot 02.1987, det. A. Aptroot. [ABL17345]

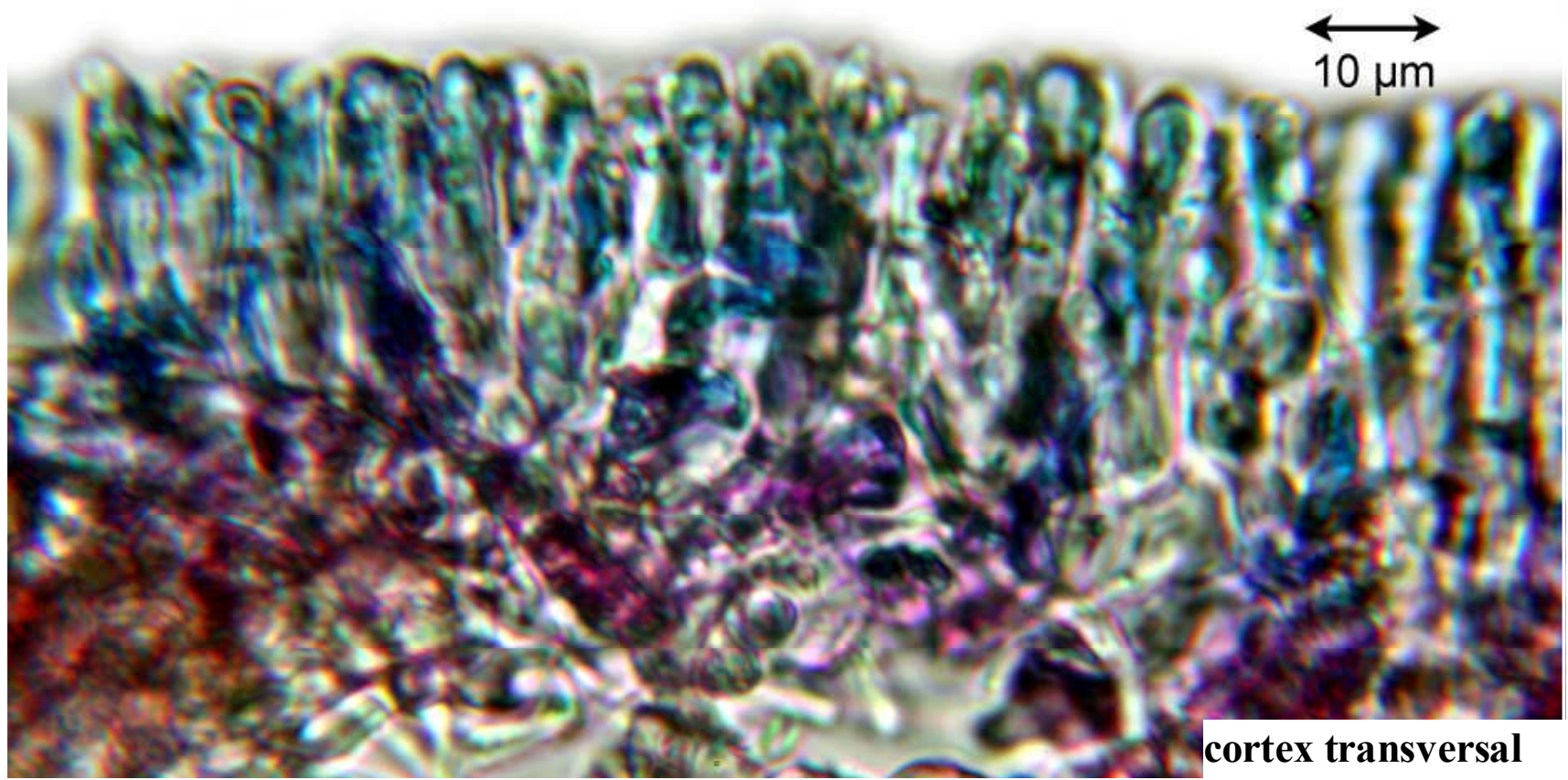






*Roccella linearis*





*Roccella linearis*