

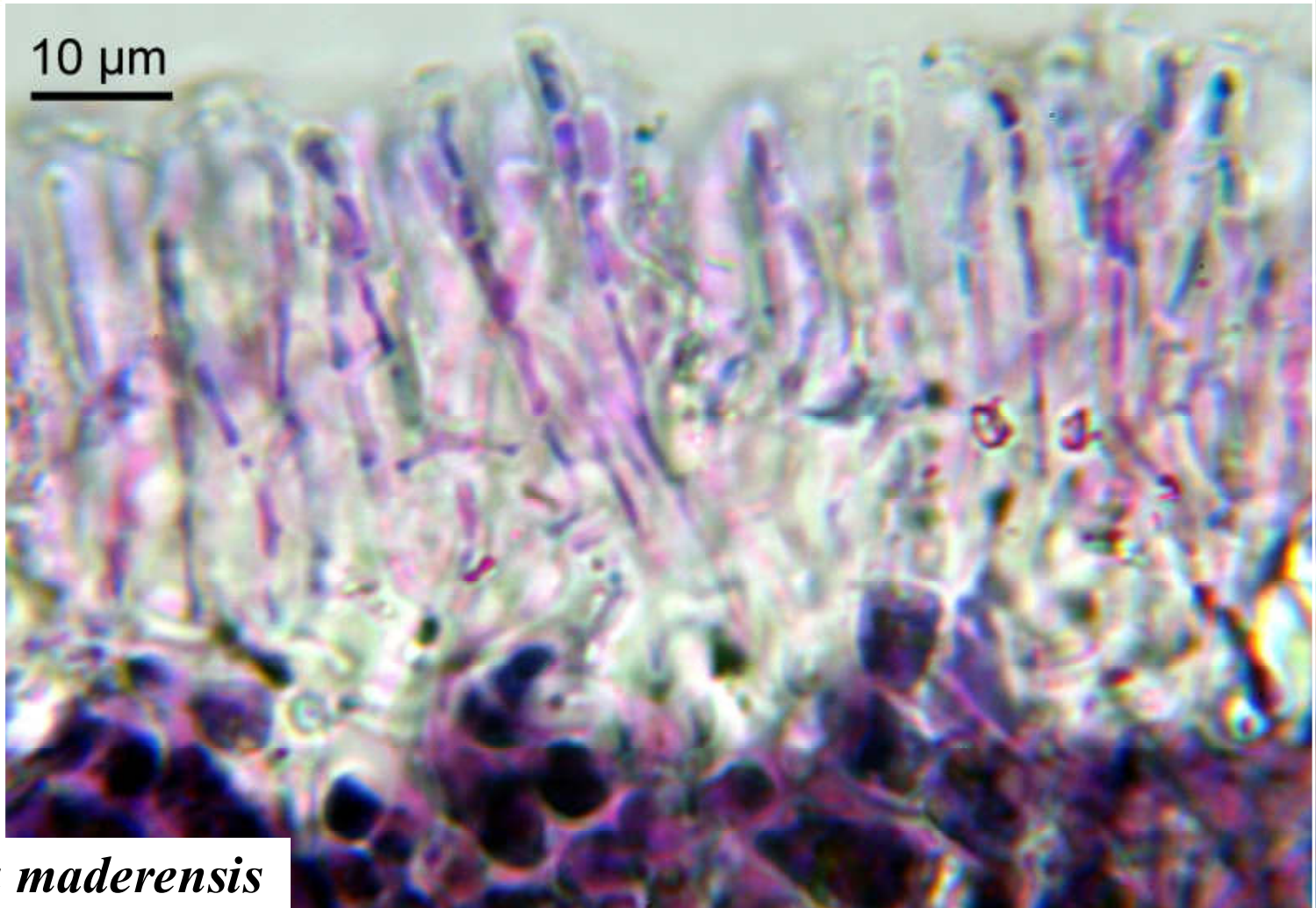
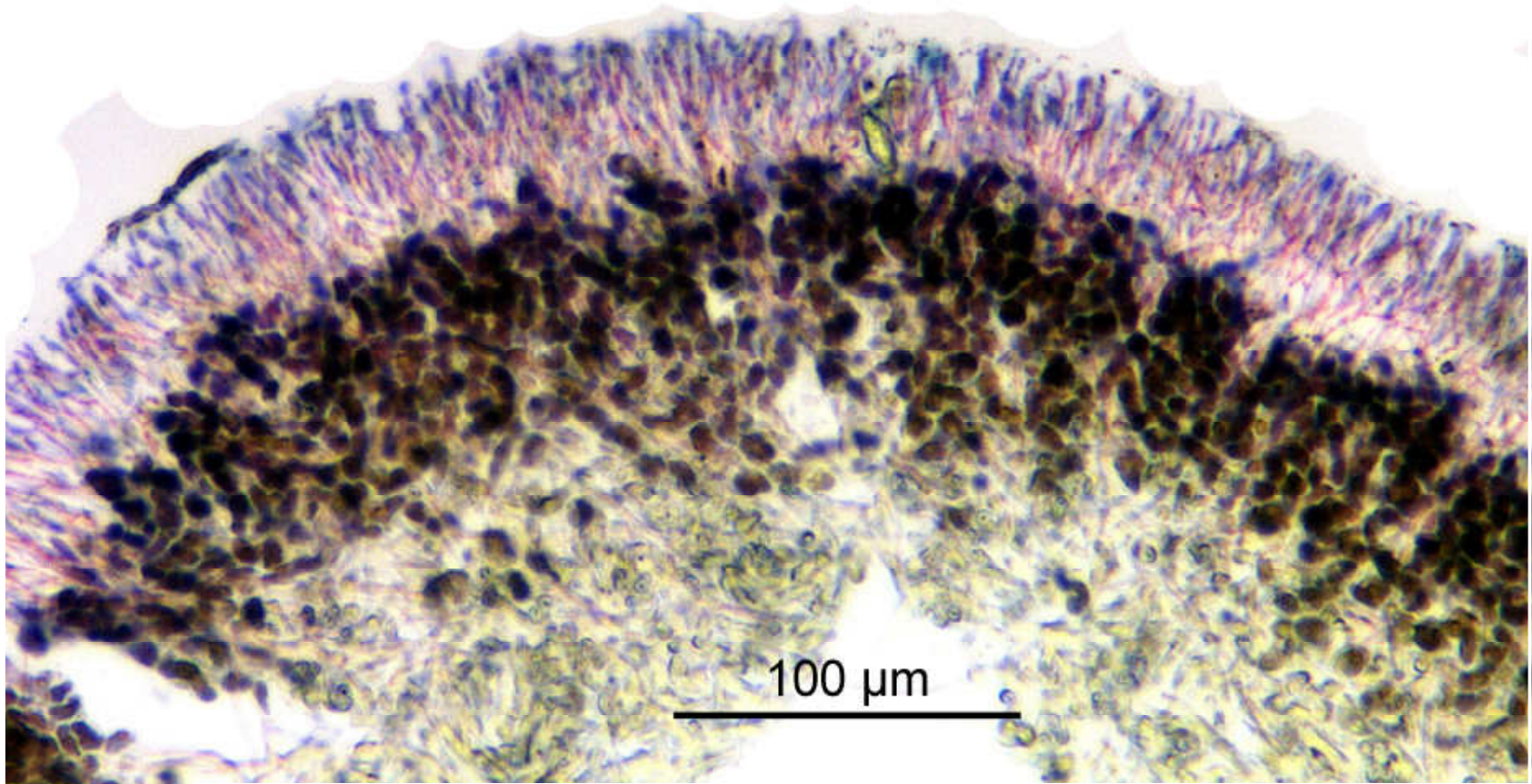
Roccella maderensis (J. Steiner) Follmann (1993)

Roccella fuciformis var. *maderensis* J. Steiner (1904)

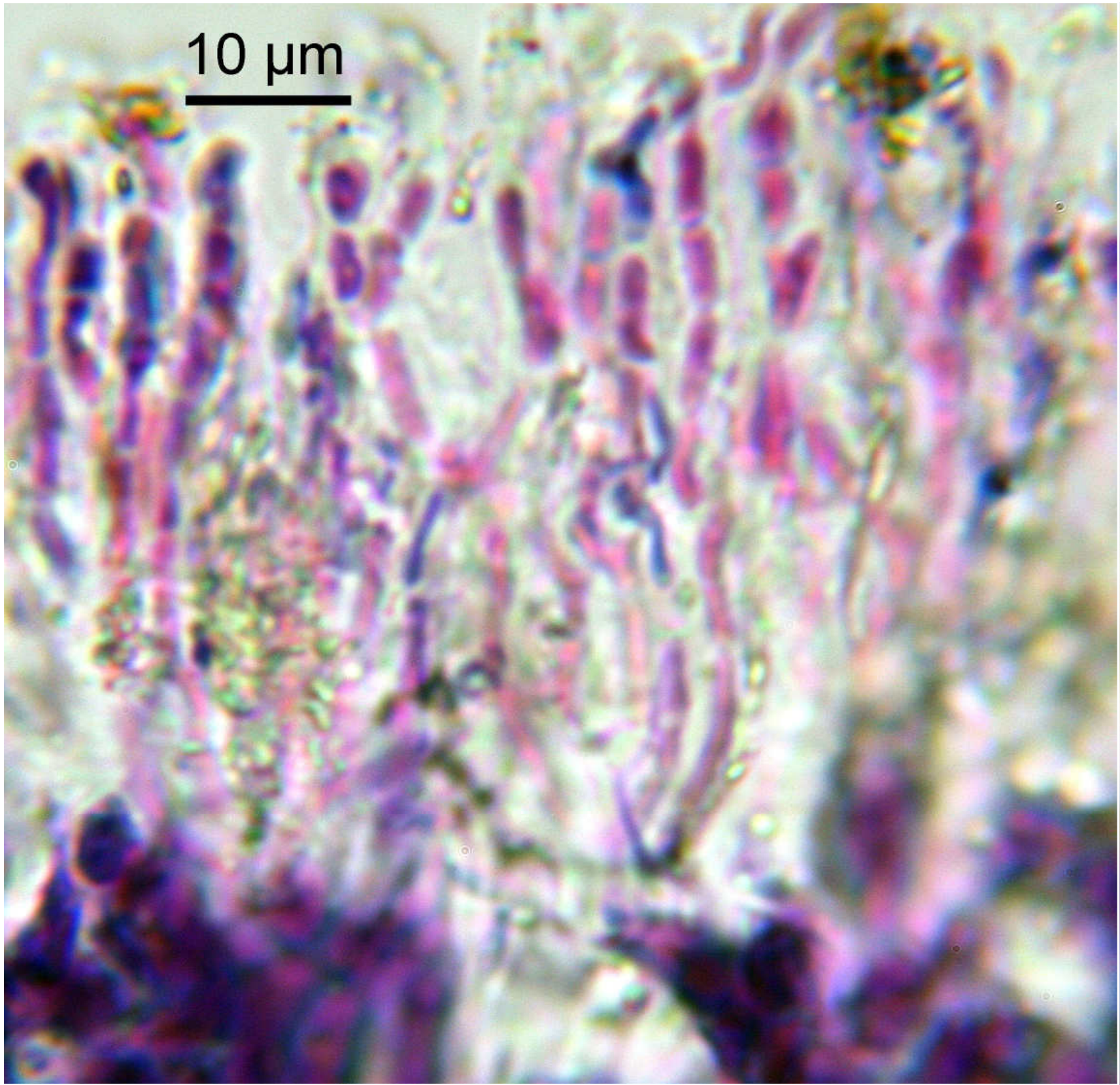
Thallus saxicolous, grey, usually sorediate, rarely not, texture firm, appanate, surface smooth, holdfast internally white to brown. Cortex palisade plectenchymateous. Apothecia round. Hypothecium black. Ascospores hyaline, 3-septate, $20\text{--}27 \times 5\text{--}6 \mu\text{m}$. Cortex C + red, K + red, Pd – or + red, subcortex C –, medulla C –, IKI + violet, soralia if present C + red, major substances erythrin, lecanoric. – Portugal, Spain, Azores, Madeira, Canary Isles.

Portugal, Madeira, Ponta de Sao Lourenço, am Ende der Fahrstraße, sonniger, küstennaher Felshang; $32^{\circ}44.596' \text{ N}$, $16^{\circ}42.056' \text{ W}$, 93 m, an Felsen, leg. Schumm 28.12.2003, det. Schumm 01.2004, (zusammen mit *R. phycopsis* wachsend). [11441]





Roccella maderensis



Roccella maderensis