

*Roccella montagnei* Bél. (1834)

*Roccella belangerii* Fée ex Darb. (1898)

*Roccella falcata* Del. ex Darb. (1898)

*Roccella fucoidea* Ach. ex Darb. (1898)

*Roccella montagnei* f. *angusta* Nyl. ex Darb. (1898)

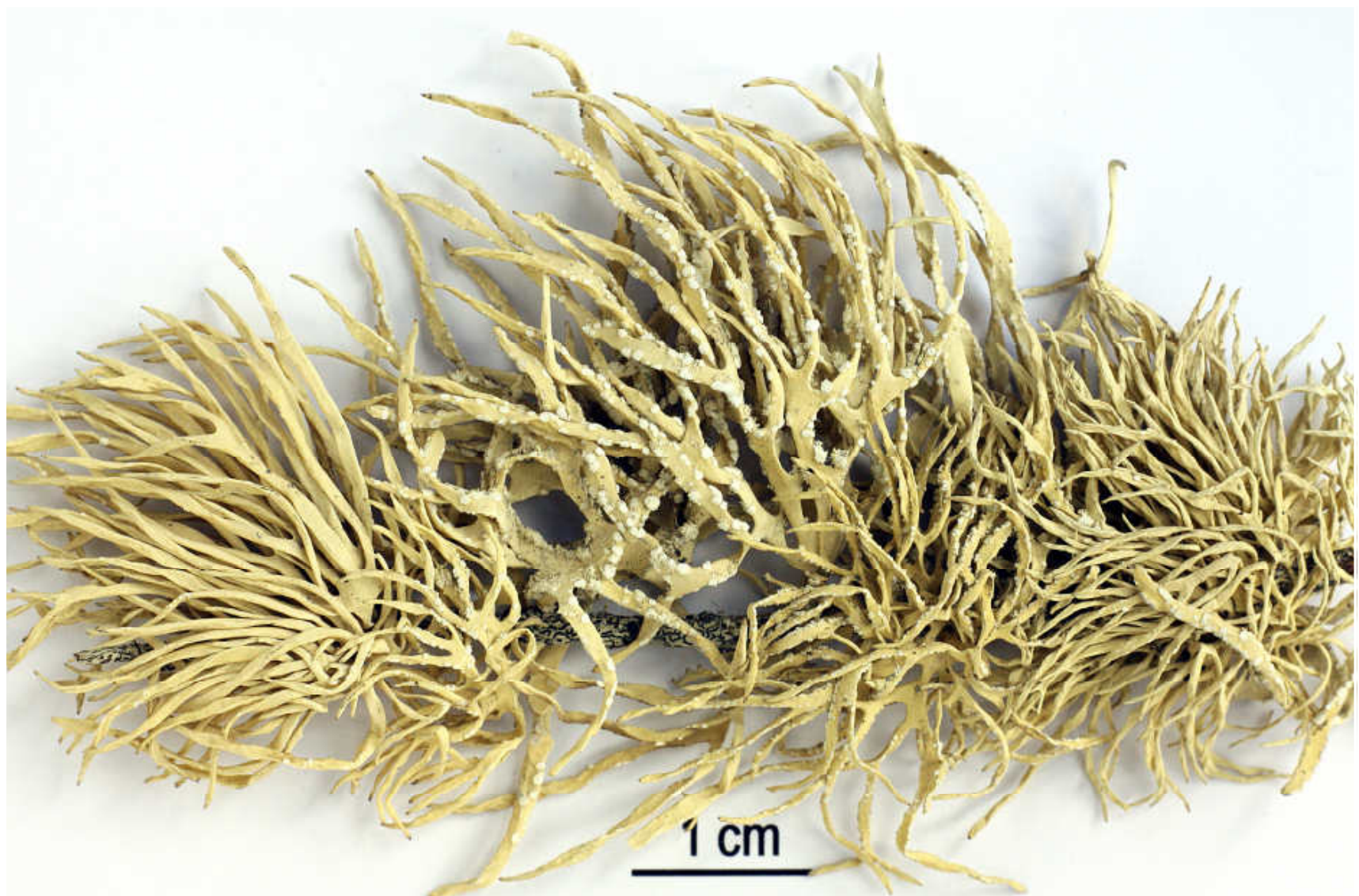
*Roccella montagnei* f. *angustata* Nyl. in Müll. Arg. (1879)

*Roccella montagnei* f. *angustior* Nyl. (1860)

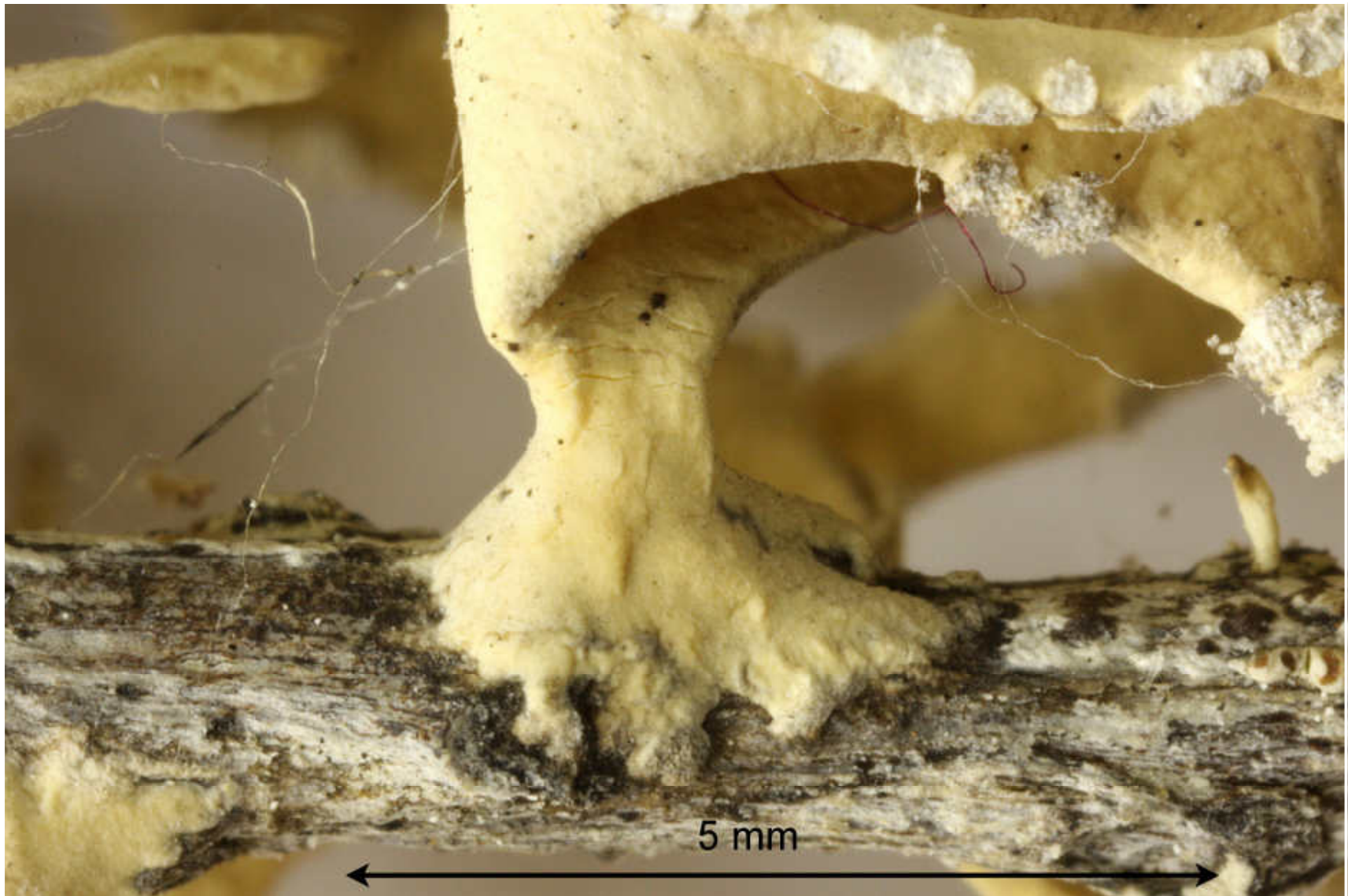
*Roccella tinctoria* f. *minor* Nyl. (1868)

Thallus corticolous, grey, sorediate, texture soft, applanate, surface ridged, holdfast internally white to brown. Cortex palisade plectenchymatous. Apothecia rare, sterile and immature when present. Cortex C + red, K – or + yellow, Pd –, subcortex C + red, medulla C –, IKI+ violet, soralia C –, major substances erythrin, lecanoric, roccellic. – Palaeotropic coasts from Australia over India to E. and W. Africa, Ascension, St Helena.

Tanzania: Tanga, flat coastal formation northeast of Pangani, on weather-beaten branches of dead shrubs, about 10 m elevation, NE-SE exposition, gregarious. Leg. Moberg 01.1971. Lichenes Exsiccati Selecti Ab Instituto Botanico Universitatis Coloniensis Editi Nr. 451 (as *Roccella linearis*). [1977]

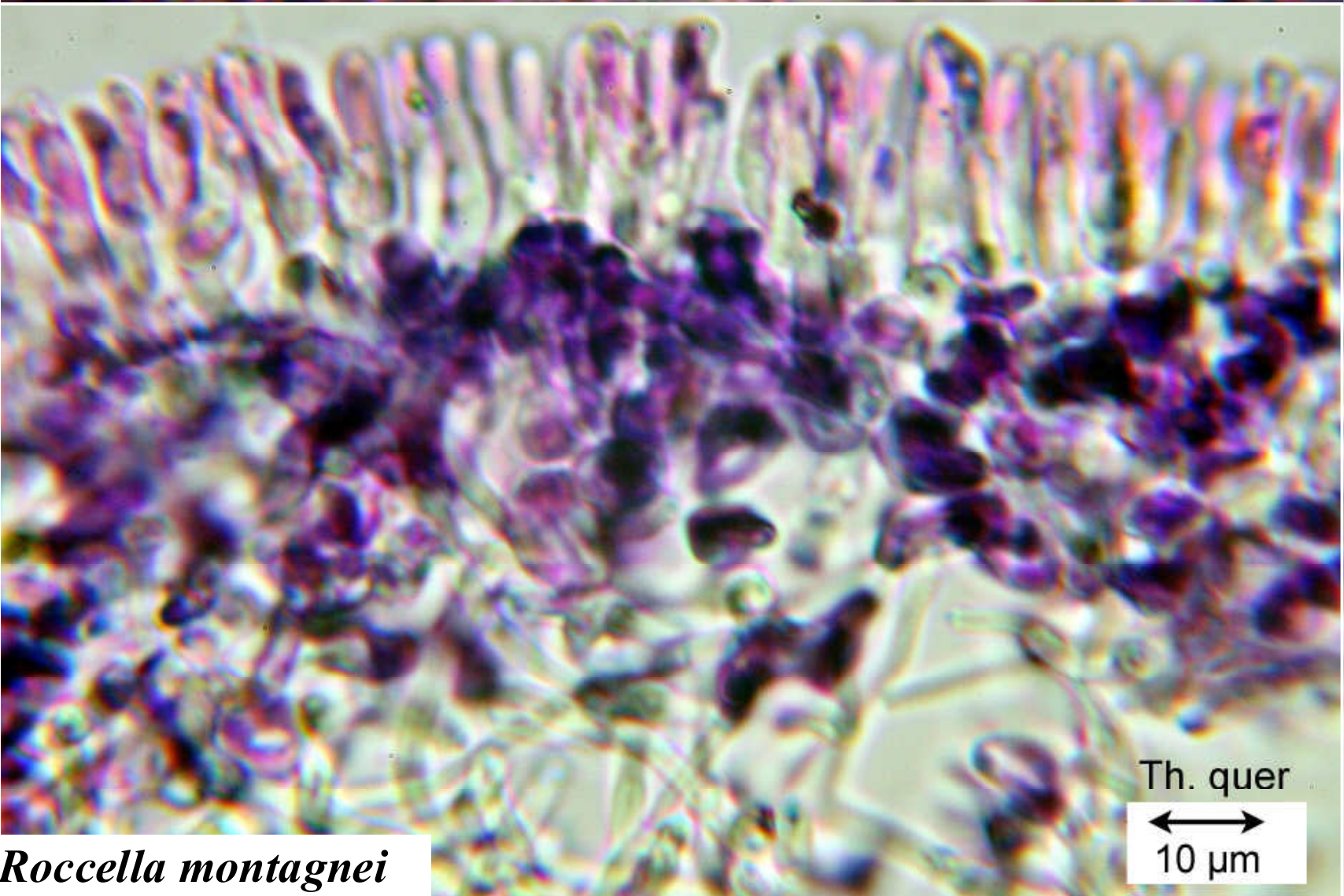
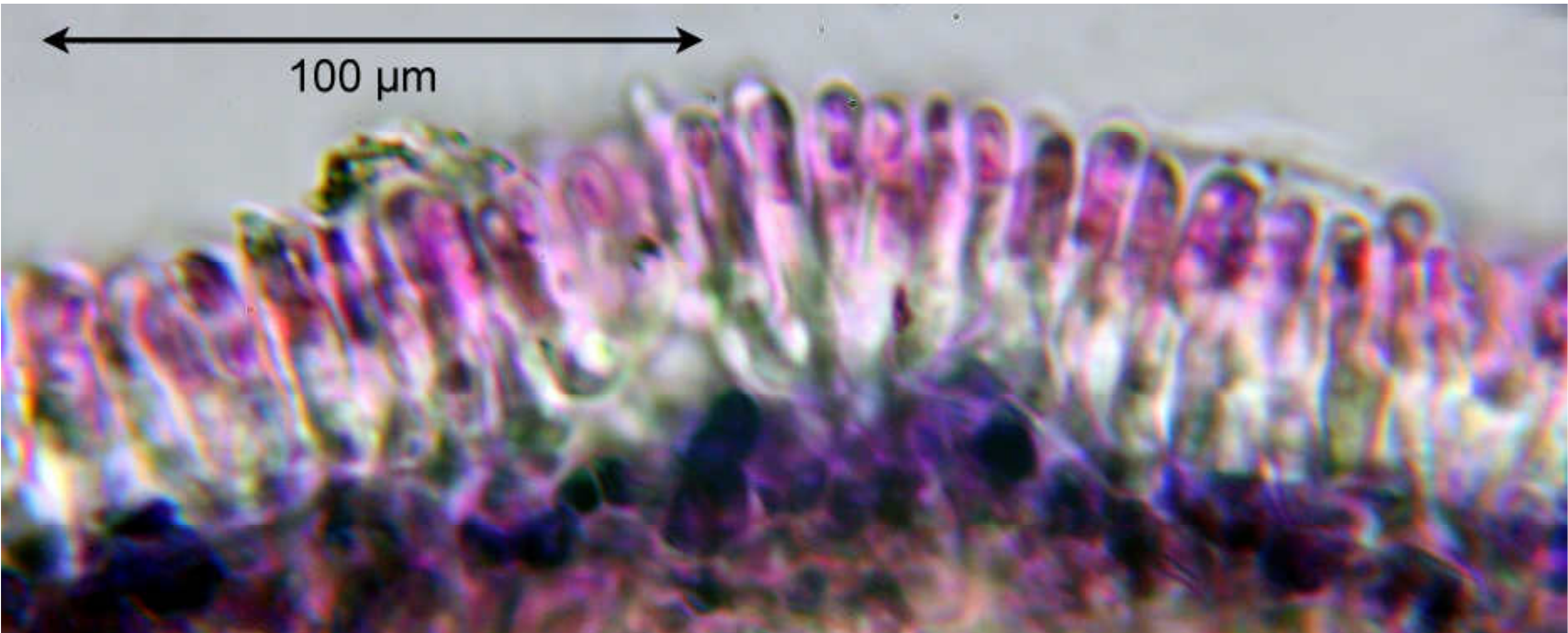
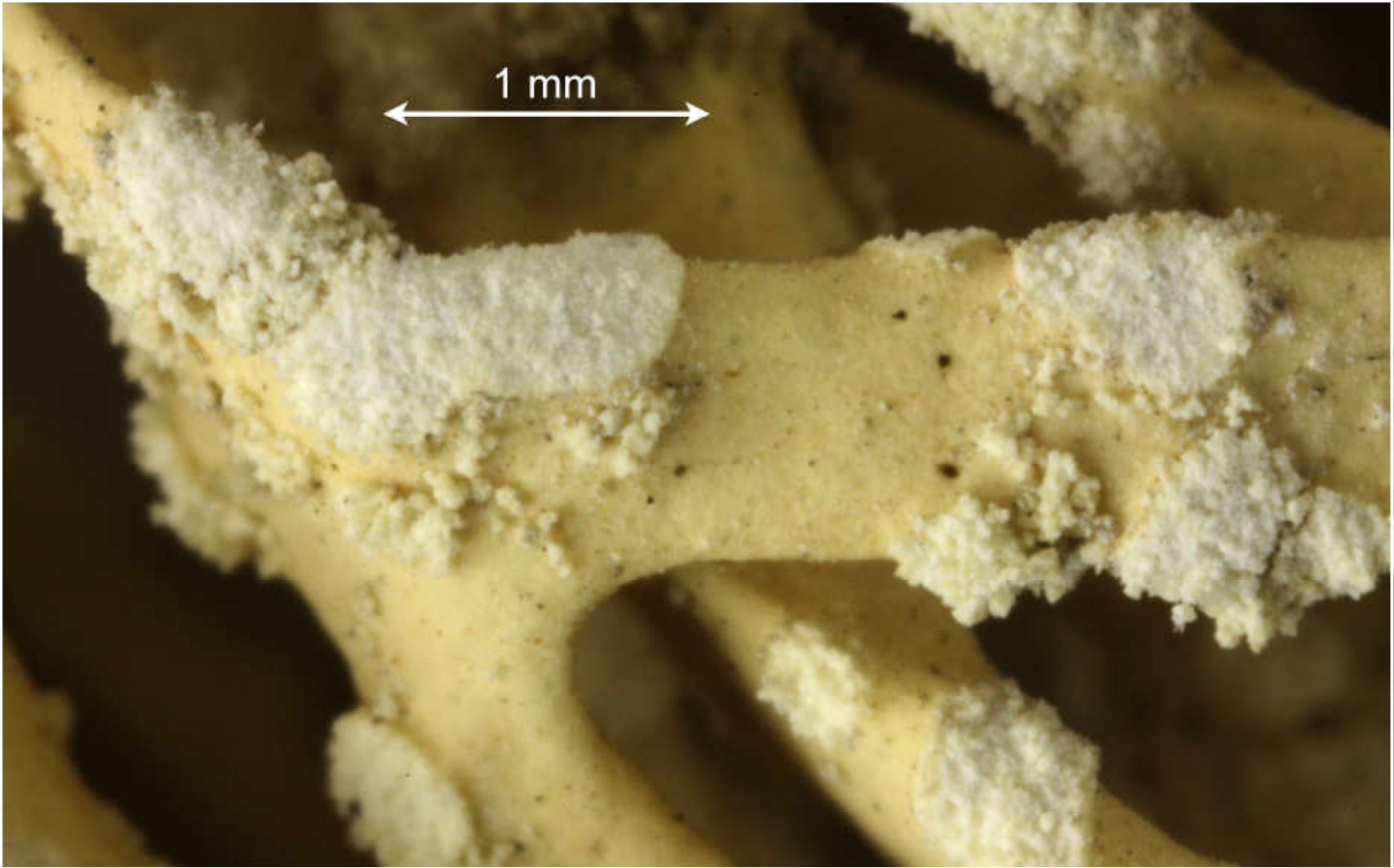






*Roccella montagnei*





*Roccella montagnei*