

***Roccella phycopsis* Ach. (1804)**

*Roccella dillenii* Bory (1828)

*Roccella fuciformis* var. *phycopsis* Sol. ex Darb. (1898)

*Roccella fucooides* (Neck.) Vain. (1901)

*Roccella fucooides* f. *cecilia-metella* (Beltr.) Zahlbr. (1924)

*Roccella fucooides* f. *pygmaea* (Durieu & Mont.) Zahlbr. (1924)

*Roccella fucooides* f. *tenuior* (Cromb.) Zahlbr. (1924)

*Roccella fucooides* var. *corticola* Cengia-Sambo (1927)

*Roccella fucooides* var. *farinosa* Del. ex Cengia-Sambo (1927)

*Roccella phycopsis* f. *pygmaea* (Durieu & Mont.) Nyl.

*Roccella phycopsis* f. *tenuior* Cromb. (1904)

*Roccella phycopsis* var. *cecilia-metella* Beltr. (1879)

*Roccella phycopsis* var. *farinosa* DC. ex Darb. (1898)

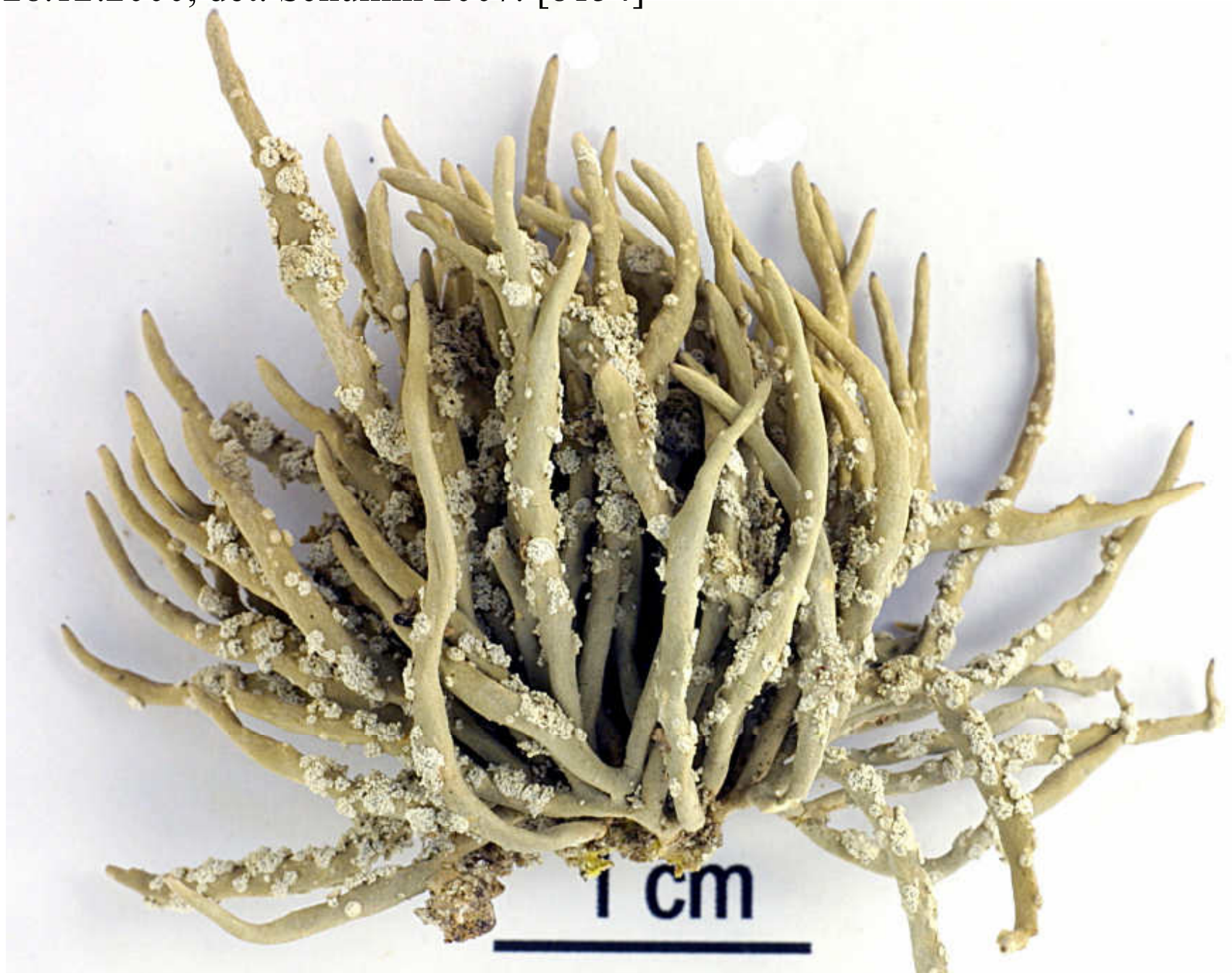
*Roccella pusilla* Mont. & Durieu (1846)

*Roccella pygmaea* Durieu & Mont. (1849)

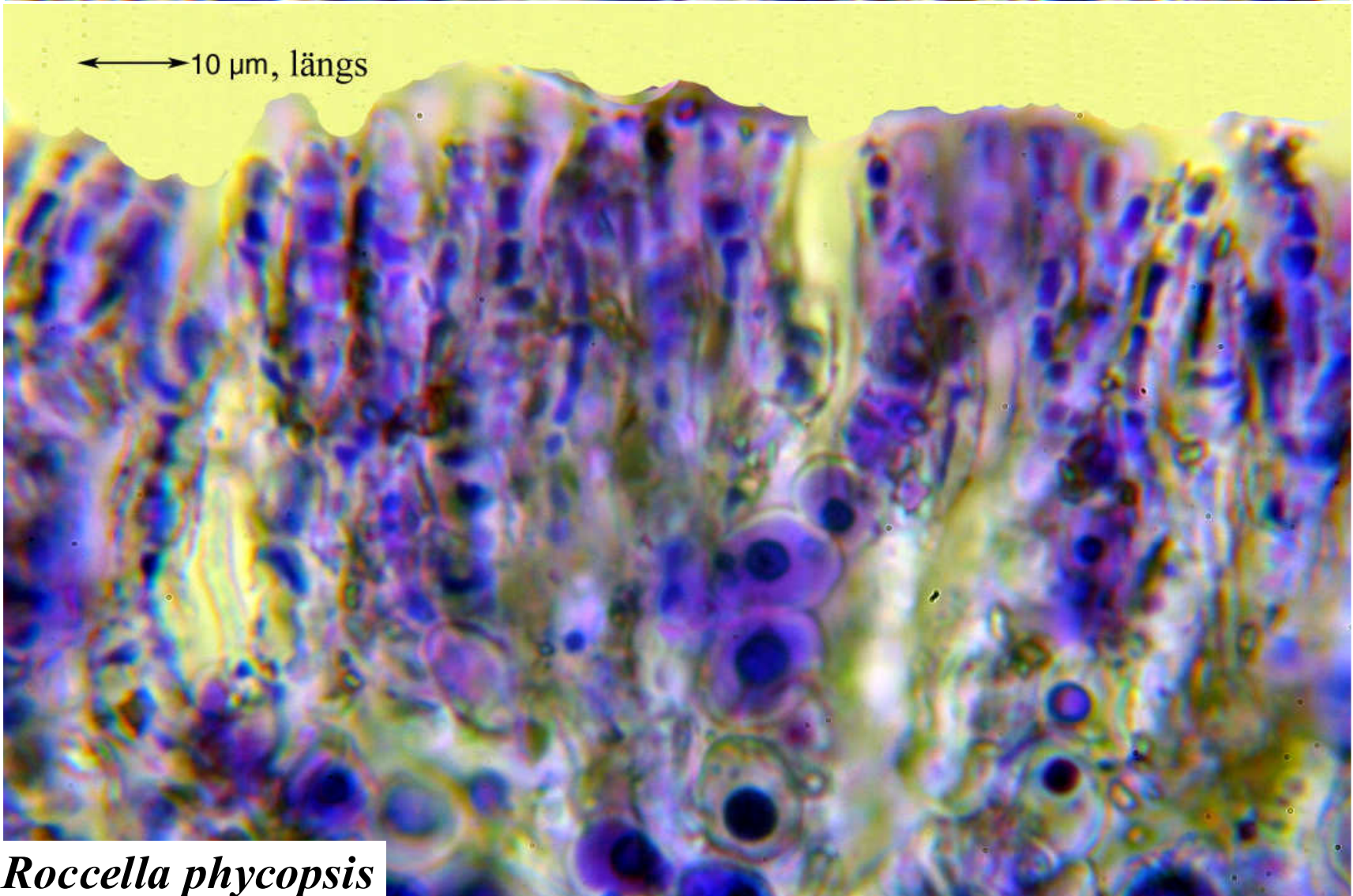
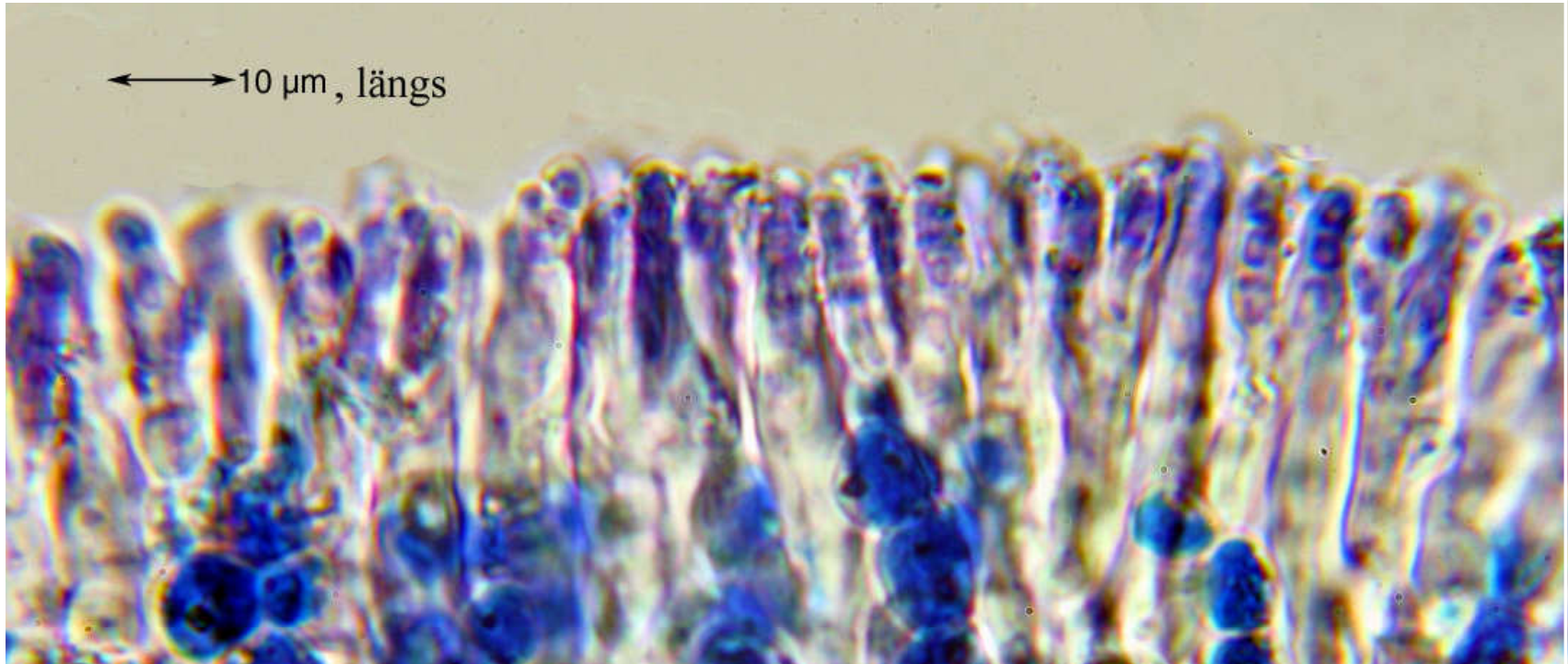
*Roccella tinctoria* var. *phycopsis* (Ach.) Mudd (1861)

Thallus saxicolous, grey, sorediate, texture firm, cylindrical, surface smooth, holdfast internally yellow. Cortex palisade plectenchymatous. Apothecia round. Hypothecium black. Ascospores hyaline, 3-septate,  $24\text{--}31 \times 5\text{--}7 \mu\text{m}$ . Cortex C + red, K –, Pd –, subcortex C + red, Pd –, medulla C –, IKI + blue, soralia C –, major substances erythrin, lecanoric, ± roccellic. – Macaronesia, Mediterranean Europe, Turkey, N. Africa.

Spanien, Kanarische Inseln, Gran Canaria, zwischen Agaete und San Nicolás de Tolentino, nebelreicher west-exponierter Felsen mit viel *Roccella* und *Ramalina*; N  $28^{\circ}01.684'$ , W  $15^{\circ}46.159'$ , 526 m. Leg. Schumm 28.12.2000, det. Schumm 2007. [8154]







*Roccella phycopsis*