

Roccella tinctoria DC. (1805)
Roccella caribaea Darb. (1898)
Roccella dichotoma (Pers.) Ach. (1814)
Roccella dubia Darb. (1898)
Roccella patellata Stirt. (1874)
Roccella tinctoria f. *complanata* Vain. (1901)
Roccella tinctoria f. *gracilis* Czerwiak. (1849)
Roccella tinctoria var. *dichotoma* (Pers.) Ach. (1814)
Roccella tinctoria var. *fastigiata* (Bory) Delise ex Darb. (1898)
Roccella arnoldii Vain. (1901)
Roccella boergesenii Vain. (1924)
Roccella canariensis Darb. (1897)
Roccella canariensis var. *vincentina* (Vain.) Zahlbr. (1906)
Roccella complanata Bory ex Darb. (1897)
Roccella complanata var. *intricata* Bory ex Darb. (1897)
Roccella crassa Darb. (1898)
Roccella fastigiata Bory (1828)
Roccella fuciformis var. *ventricosa* Mont. (1857)
Roccella fucoides var. *arnoldii* (Vain.) Zahlbr. (1914)
Roccella guanchica Feige & Viethen (1987)
Roccella hypomecha var. *isabellina* Vain. (1901)
Roccella hypomecha var. *soredifera* Bory ex Darb. (1898)
Roccella medusina Bory ex Darb. (1898)
Roccella medusina var. *irregularis* Bory ex Darb. (1898)
Roccella medusina var. *soredifera* Bory ex Darb. (1898)
Roccella purpura-antiquorum Bory (1828)
Roccella rangiformis Bory ex Darb. (1898)
Roccella tinctoria f. *filiformis* Bab. (1839)
Roccella tinctoria f. *valida* Hampe (1897)
Roccella tinctoria var. *deformis* Bory ex Darb. (1898)
Roccella tinctoria var. *soredifera* Bory ex Darb. (1898)
Roccella tuberculata var. *vincentina* Vain.
Roccella vincentina (Vain.) Follmann (1987)
Roccella vincentina var. *boergesenii* (Vain.) Follmann (1987)

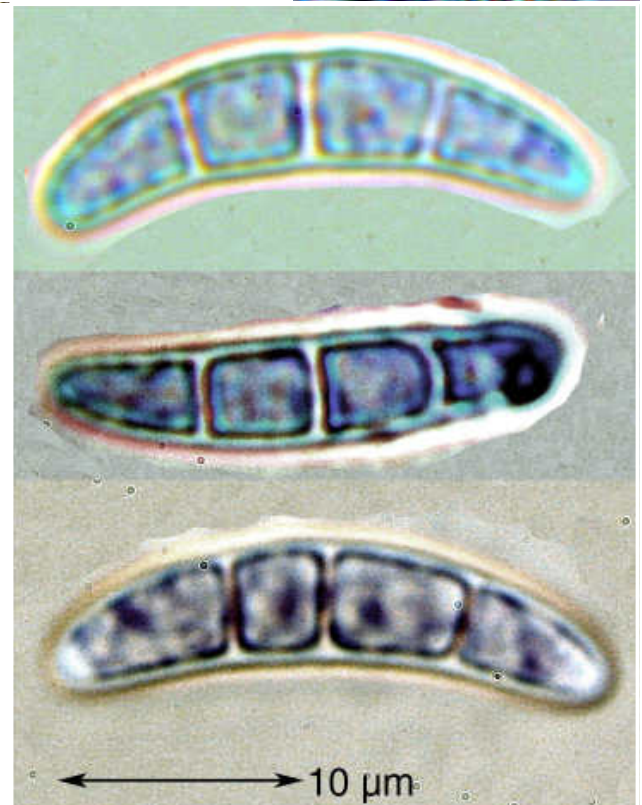
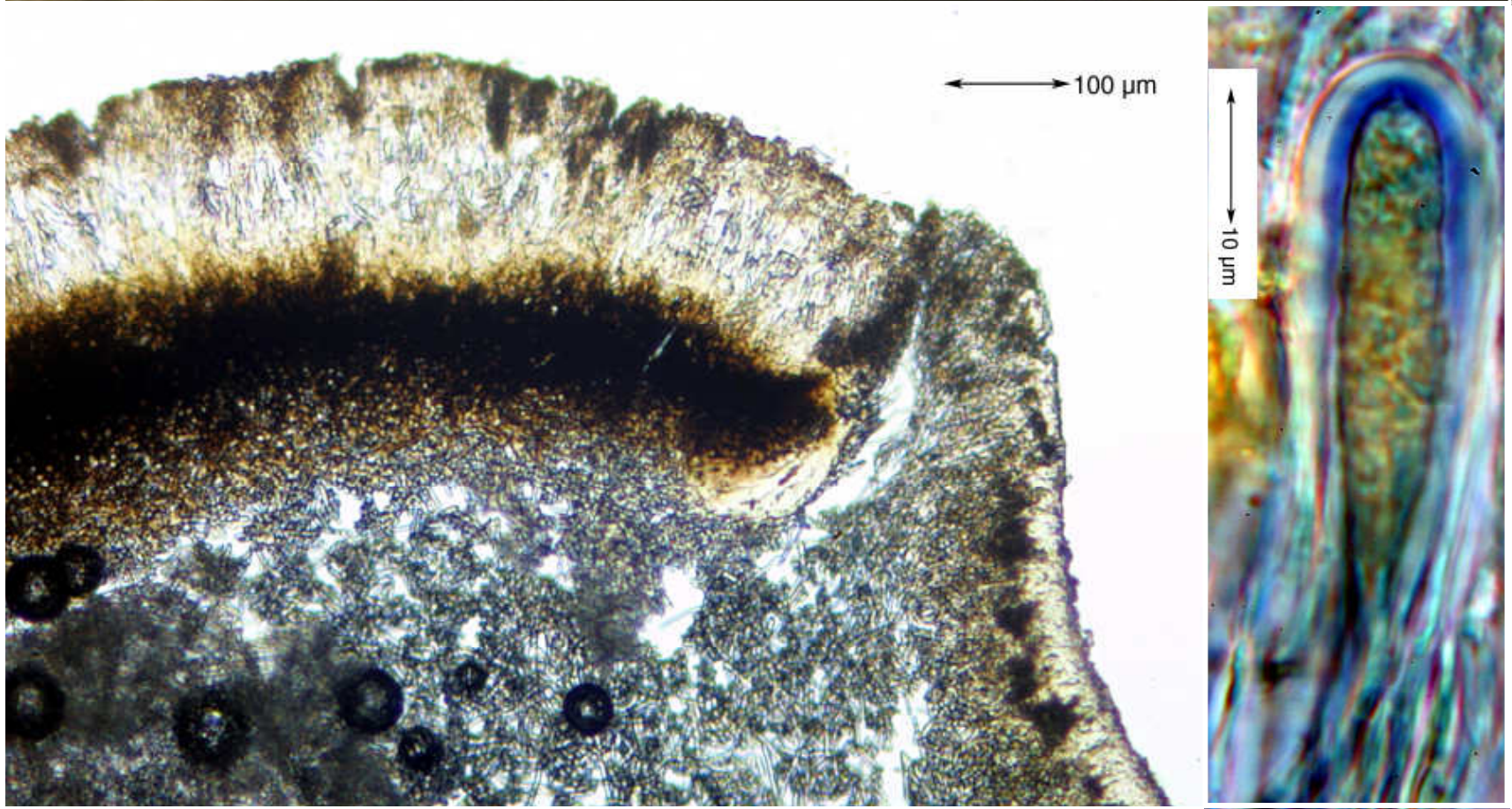
Note: *Roccella tinctoria sensu* most authors is *Roccella africana*. The sorediate plants have been mostly named as *Roccella boergesenii* and the plants with apothecia *Roccella canariensis*, but new molekular investigations had showed their indentity.

Thallus saxicolous, brown, sorediate or not, texture firm, cylindrical, surface dull, holdfast internally white to brown. Cortex typically

branched type. Apothecia round. Hypothecium black. Ascospores hyaline, 3-septate, $21-27 \times 5-8 \mu\text{m}$. Cortex C -, K -, KC -, Pd -, subcortex C + red, KC + red, K -, Pd -, medulla C -, KC -, K -, Pd -, IKI+ violet, soralia if present C + red, IKI -, major substances erythrin, lecanoric. - Azores, Madeira, Selvagem Isles, Canary Isles, Cape Verde Islands, W. Mediterranean Europe, Senegal, Angola

Spanien, Kanarische Inseln, Teneriffa, 1 km südöstlich von Los Cristianos an einem Ausläufer des Mont Guaze, ca. 220 m, auf Erde zwischen vulkanischem Gestein in Sukkulenten-Steppe. Leg. Schumm 27.12.1975, det. Schumm. [2438] - the fertile lichen „*Roccella canariensis*“

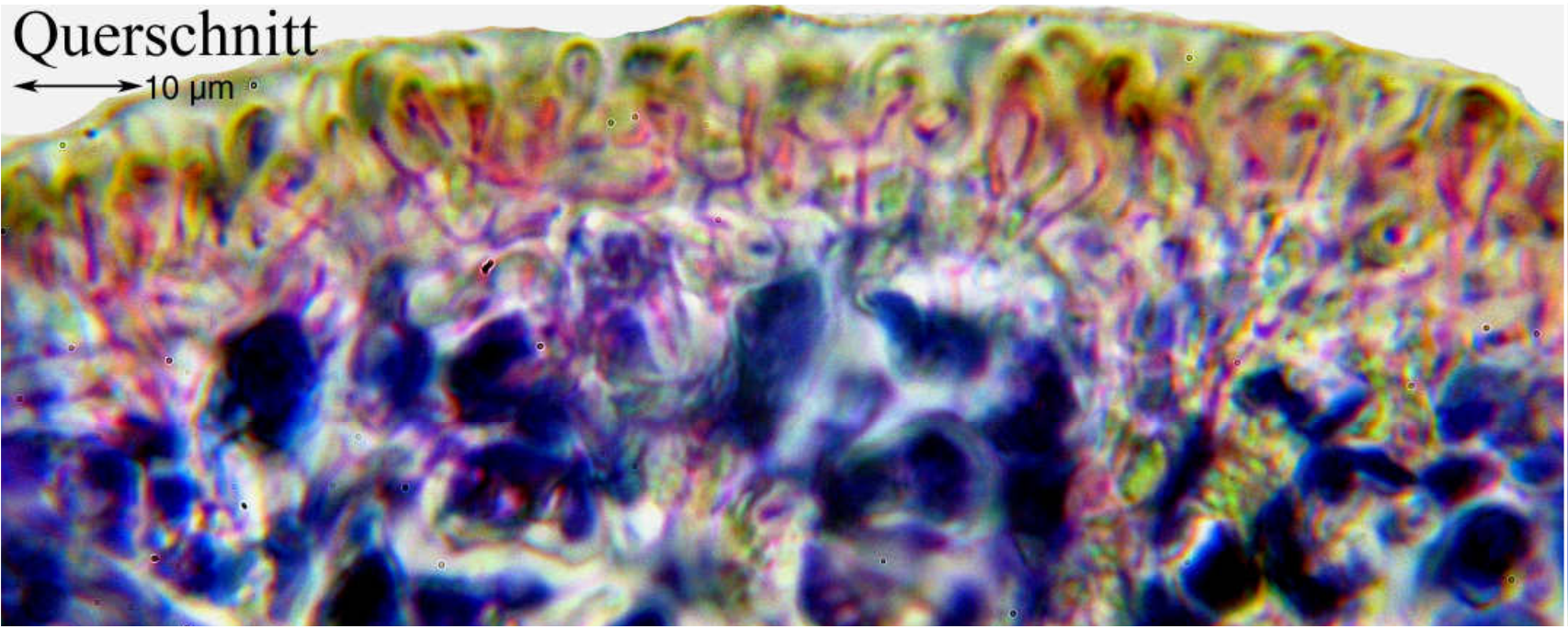




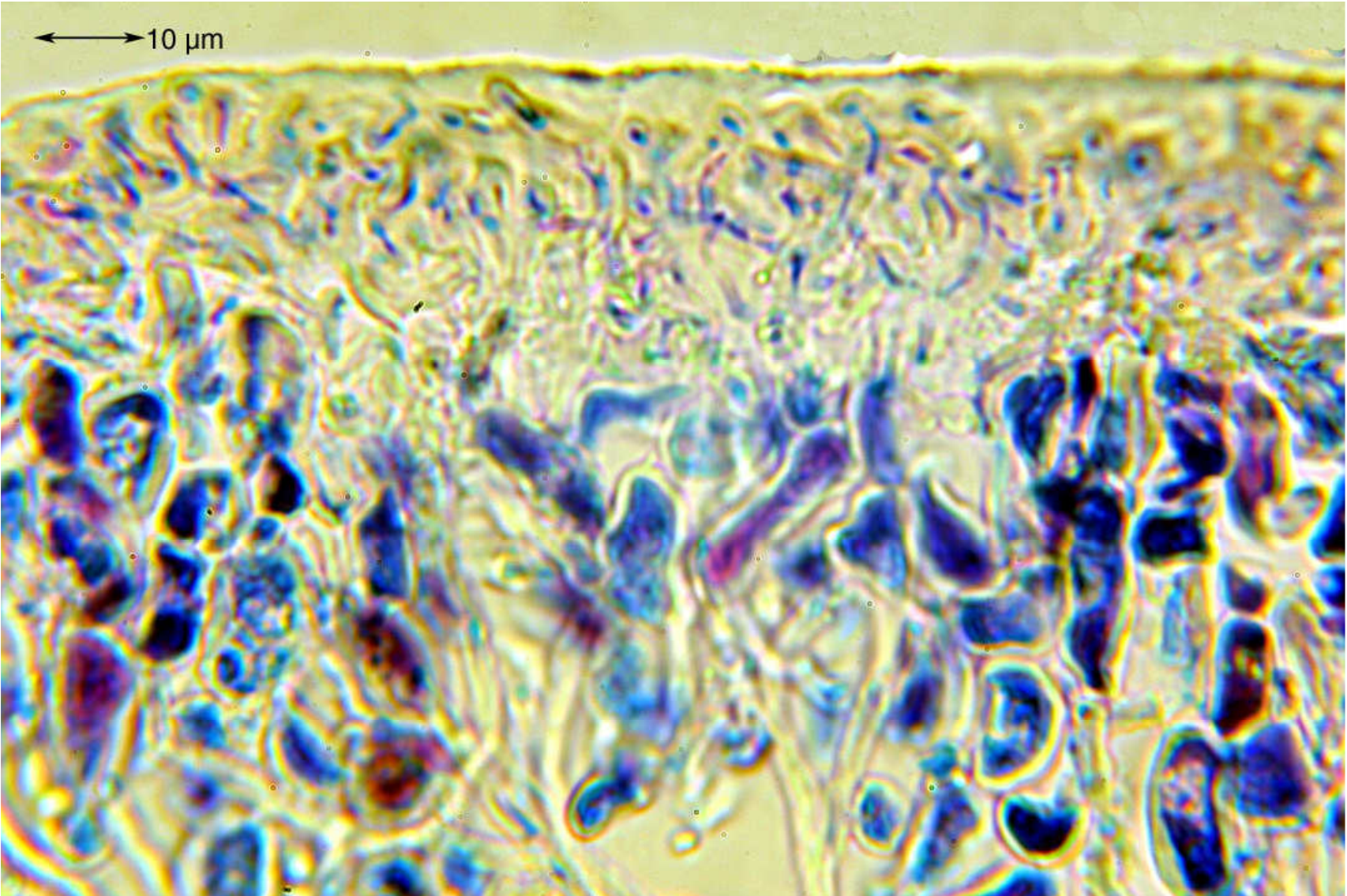
Roccella tinctoria

Querschnitt

← 10 μm →



← 10 μm →



Rocella tinctoria