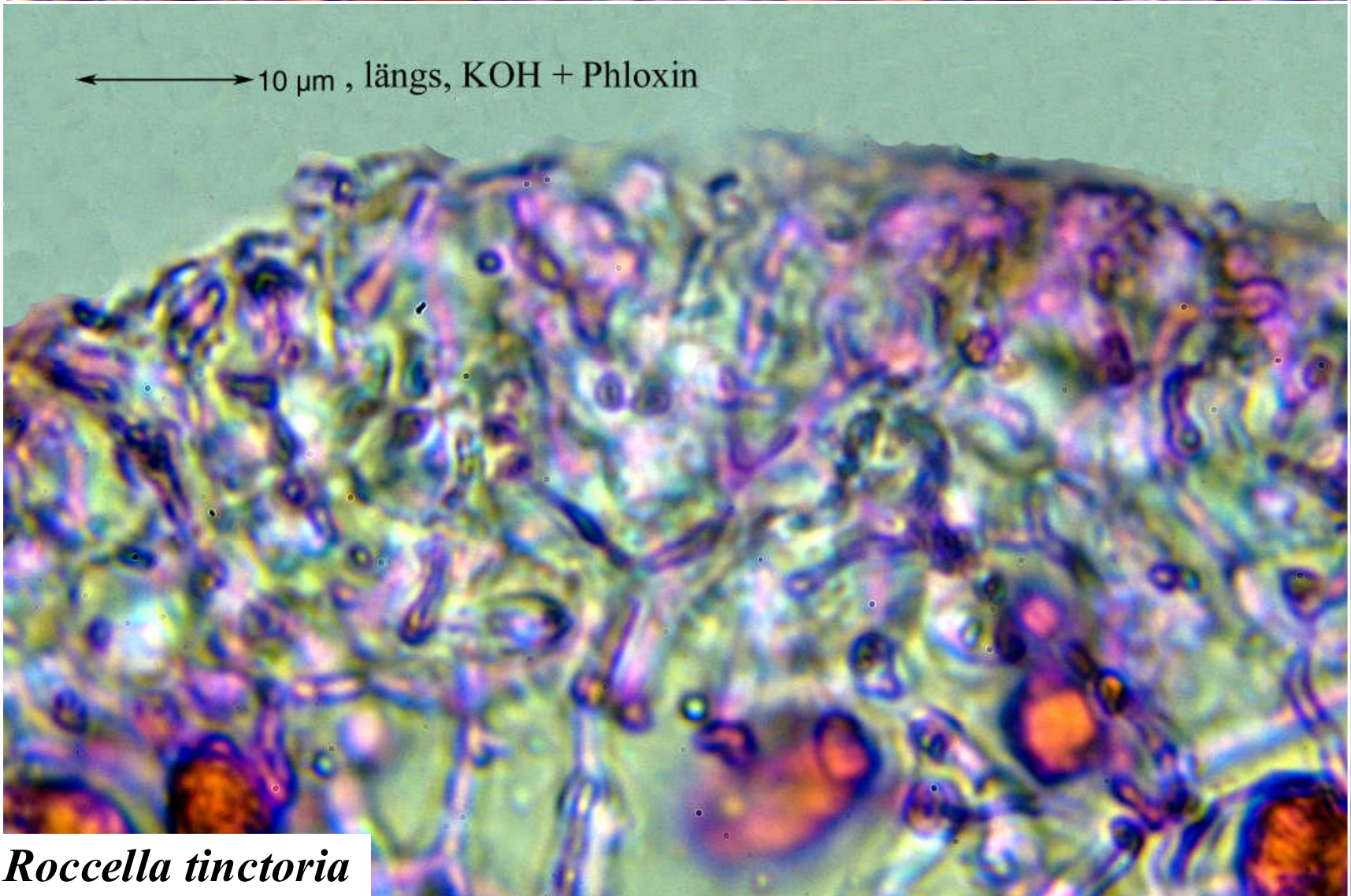
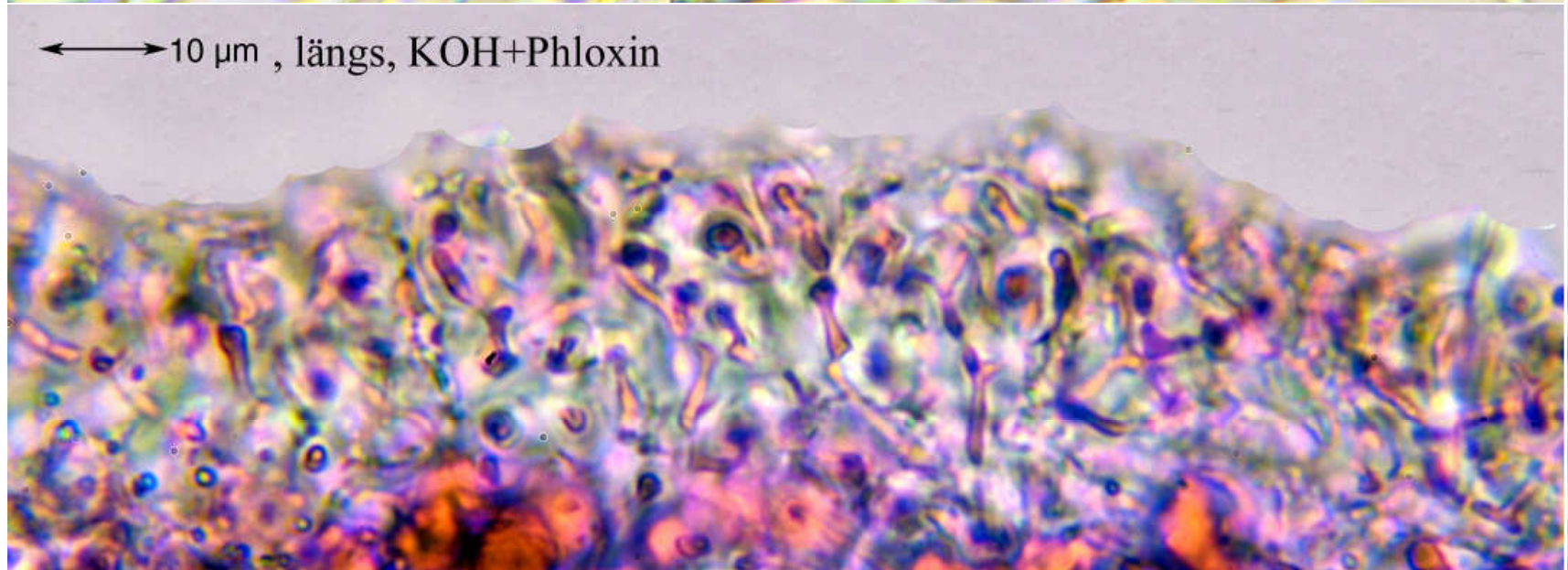
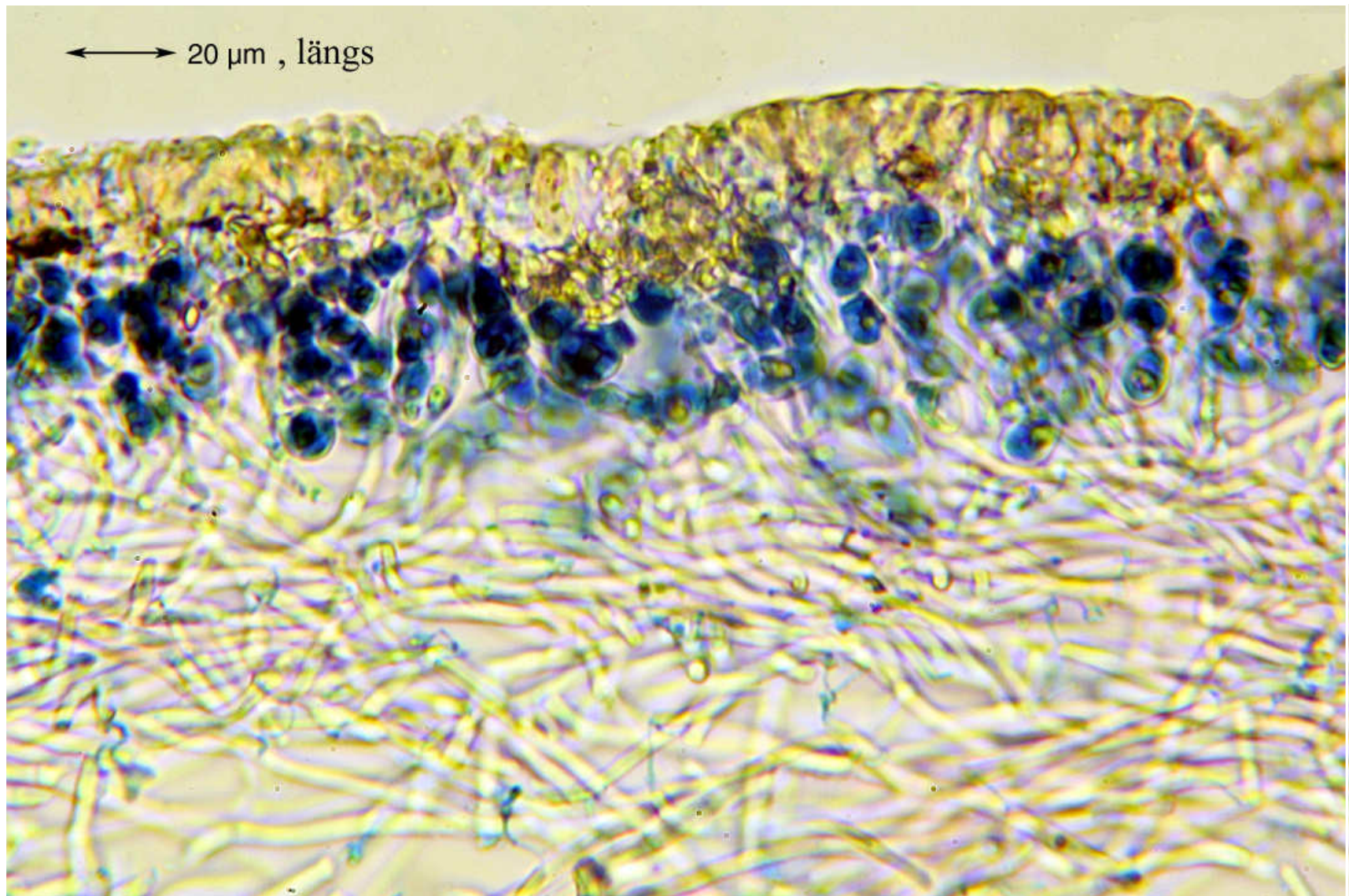


*Roccella tinctoria* DC.

Spanien, Kanarische Inseln, Gran Canaria; an der Straße von San Nicolas nach Agaete im Barranco los Berreos an nord-exponierten Stellen; N 28°02.100, W 15°45.464, Höhe 570 m; an Felsen. Leg. Schumm 02.01.2000, det. Schumm 11.2000. [6825] – this sorediate lichen was often named as *Roccella boergesenii* Vain.





*Roccella tinctoria*