

*Roccella tuberculata* Vain. (1901)

*Roccella canariensis* var. *subphycopsis* Steiner (1904)

*Roccella canariensis* var. *tuberculata* (Vain.) Steiner (1904)

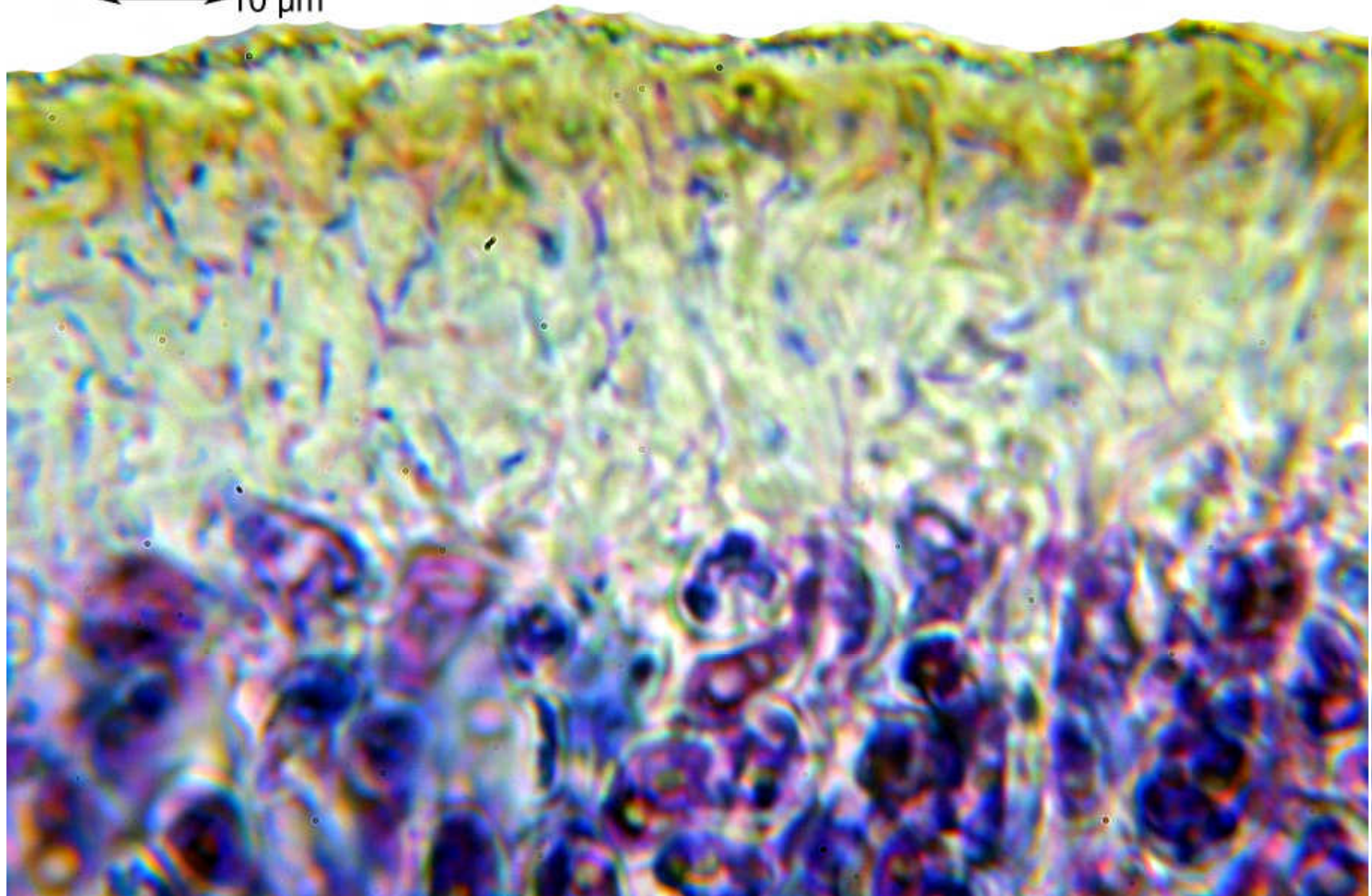
Thallus saxicolous, brown, sorediate, texture firm, cylindrical, surface dull, holdfast internally white to brown. Cortex branched type. Apothecia unknown. Cortex C –, K –, Pd –, subcortex C + red, K –, Medulla C –, K –, Pd –, soralia C –, major substance lecanoric. – Azores, Madeira, Selvagem Isles, Canary Isles, Cape Verde Islands, W. Mediterranean Europe.

Spanien, Kanaren, La Palma, Lavafeld an der Südküste bei Playa del Faro, 28°28.352' N, 17°51.813' W, ca. 30-40 m. Leg. Schumm 13.01.2007, det. Schumm. [12865]



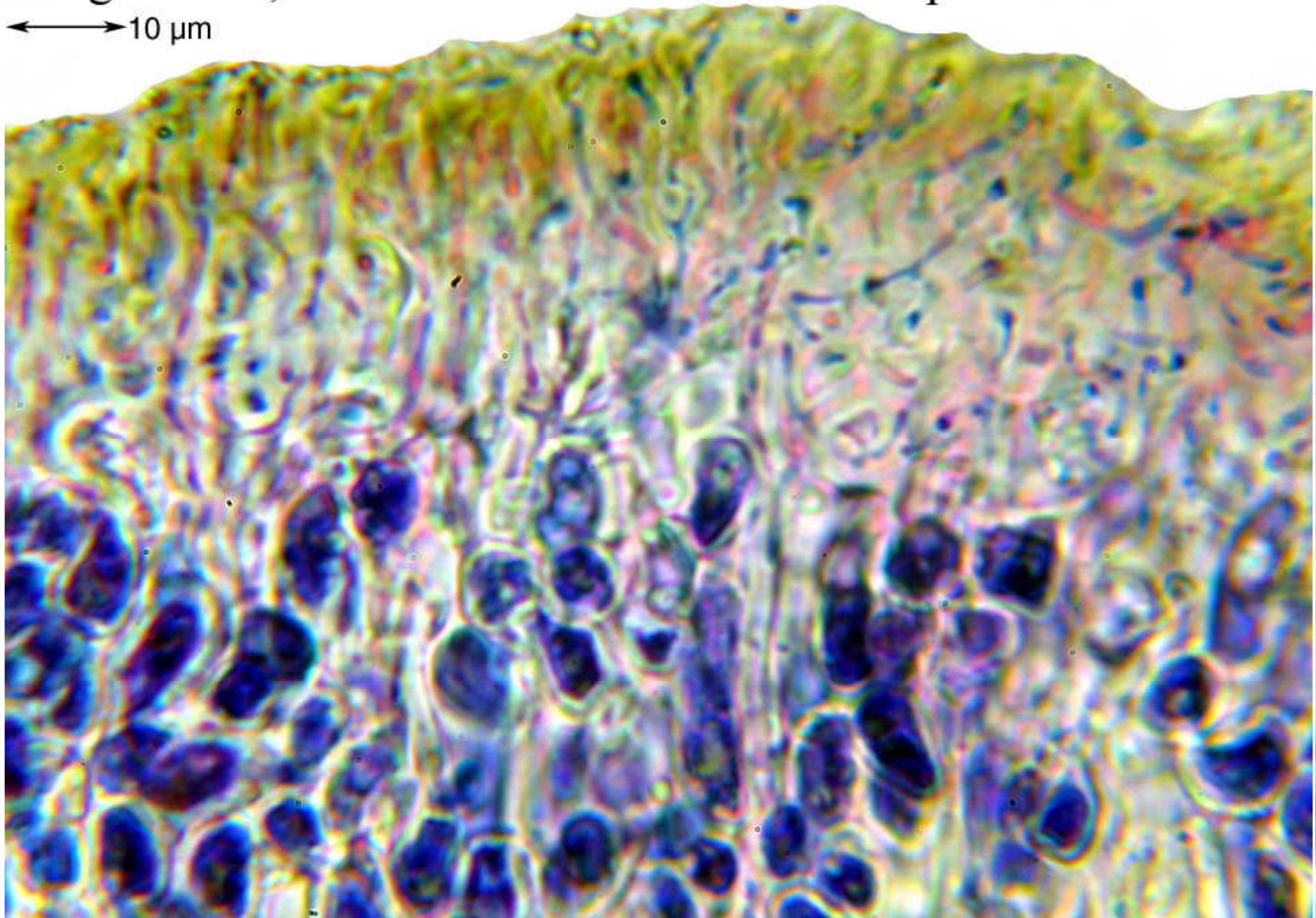
Querschnitt, Aniliblau-Säurefuchsin-Lactophenol

←→ 10 µm



Längsschnitt, Anilinblau-Säurefuchsin-Lactophenol

←→ 10 µm



*Roccella tuberculata*