

Roccella verruculosa Follmann (1980)

Roccella bellicosa Darb. (1897)

Roccella caribaea sensu most authors

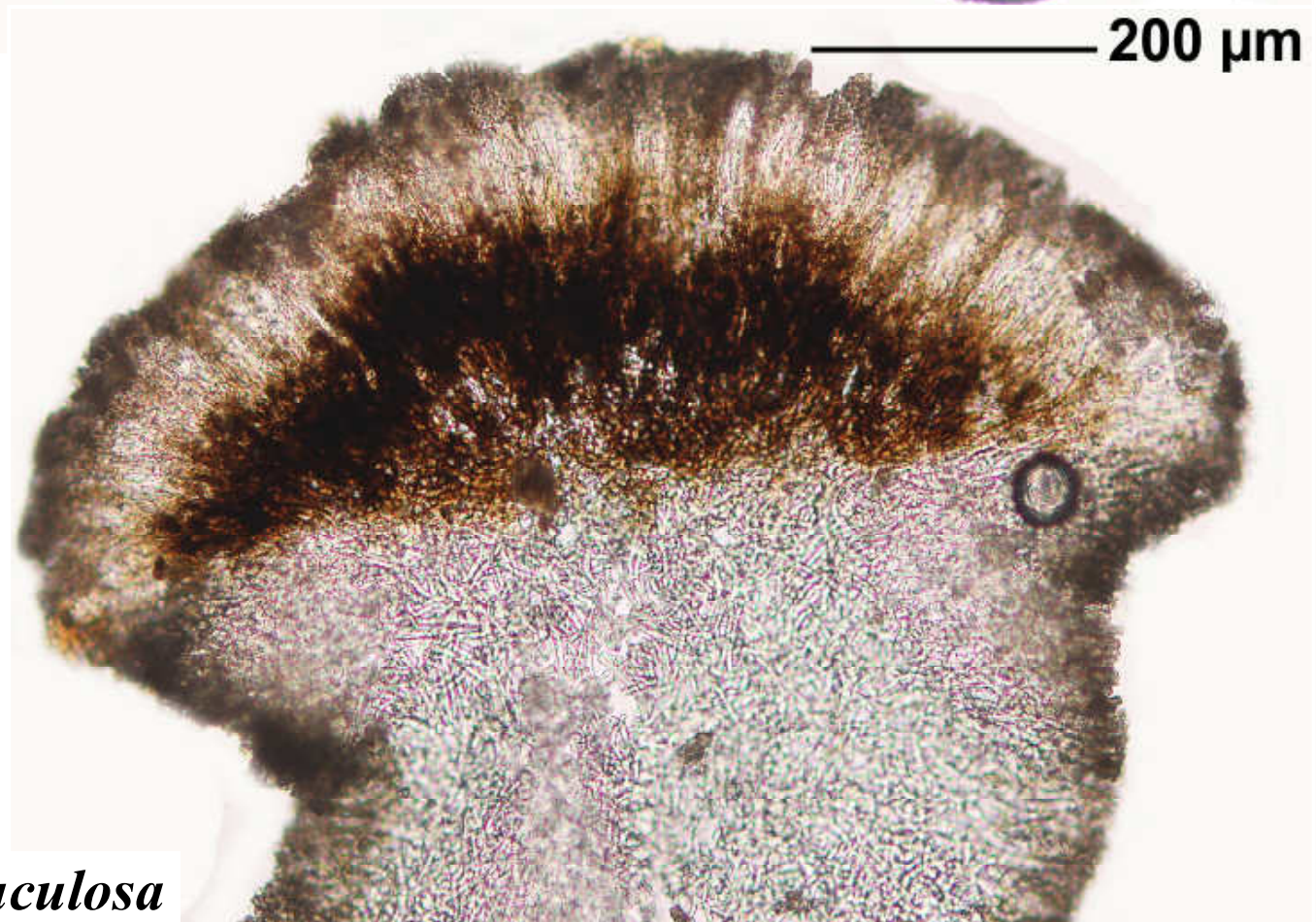
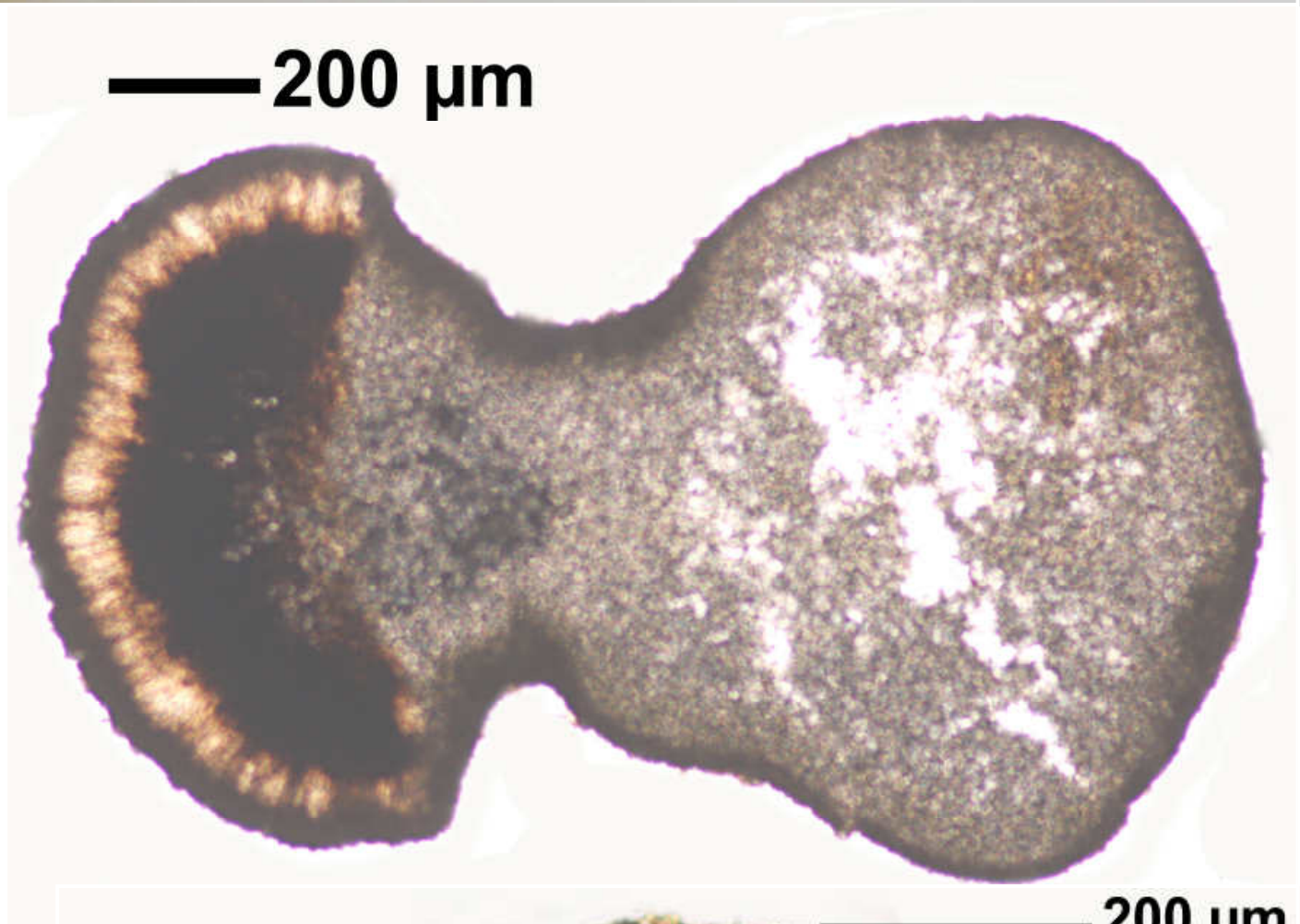
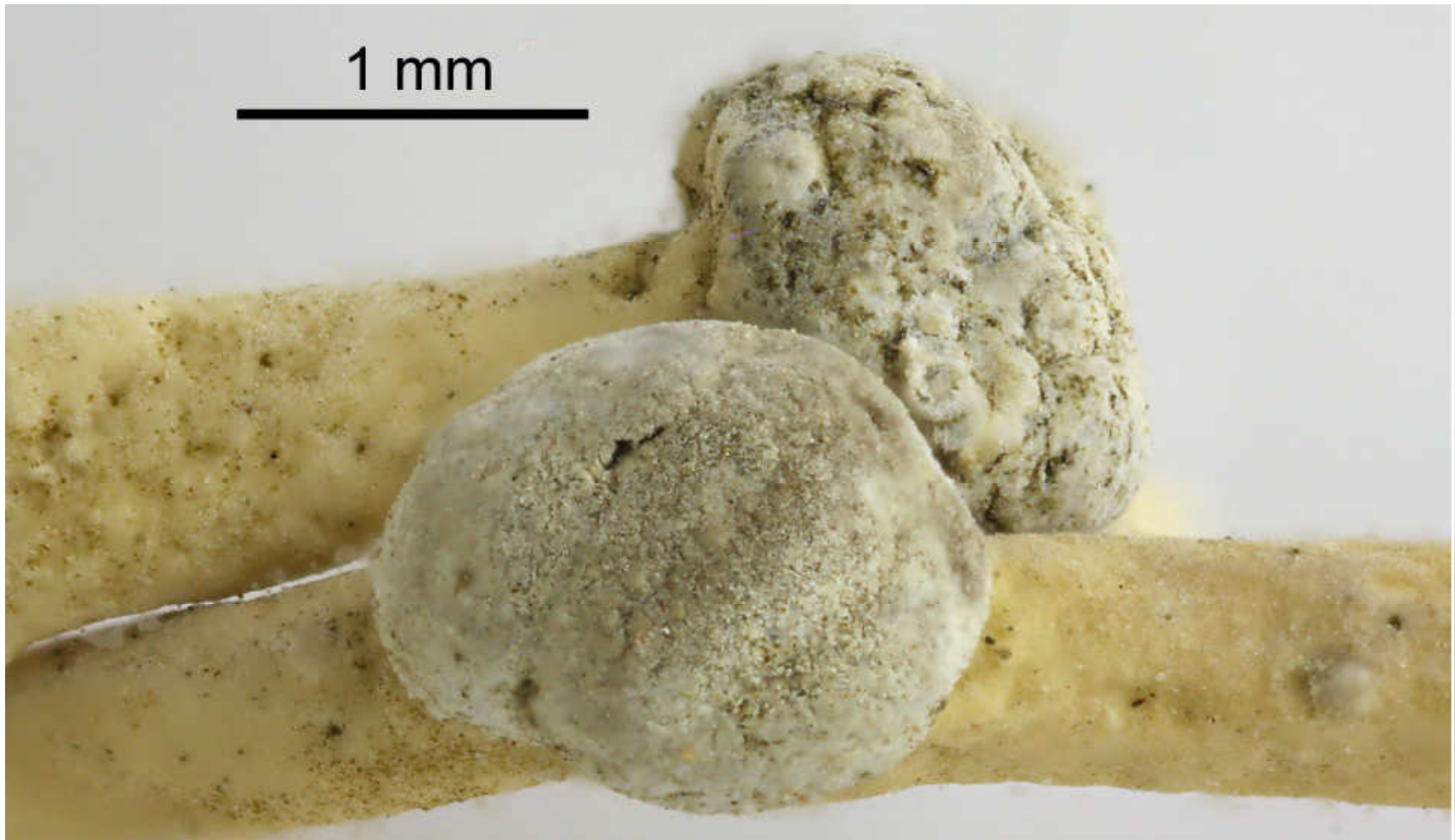
Thallus saxicolous, grey, not soresiate, texture firm, angular, surface smooth, holdfast internally white to brown. Cortex anticlin intermediate type. Apothecia round. Hypothecium black. Ascospores hyaline, 3-septate, $17-18 \times 4-5 \mu\text{m}$. Cortex C + red, K + reddish, Pd –, subcortex C + red, major substances erythrin, gyrophoric. – Colombia, Venezuela, Netherlands Antilles (Aruba, Bonaire, Curacao).

West Indies, Curacao, Knip Hills, $12^{\circ}25' \text{ N}$, $69^{\circ}10' \text{ W}$, leg. A.L. Stoffers 2. Dec. 1963, det. A.Aptroot 1990. [ABLsnInd]

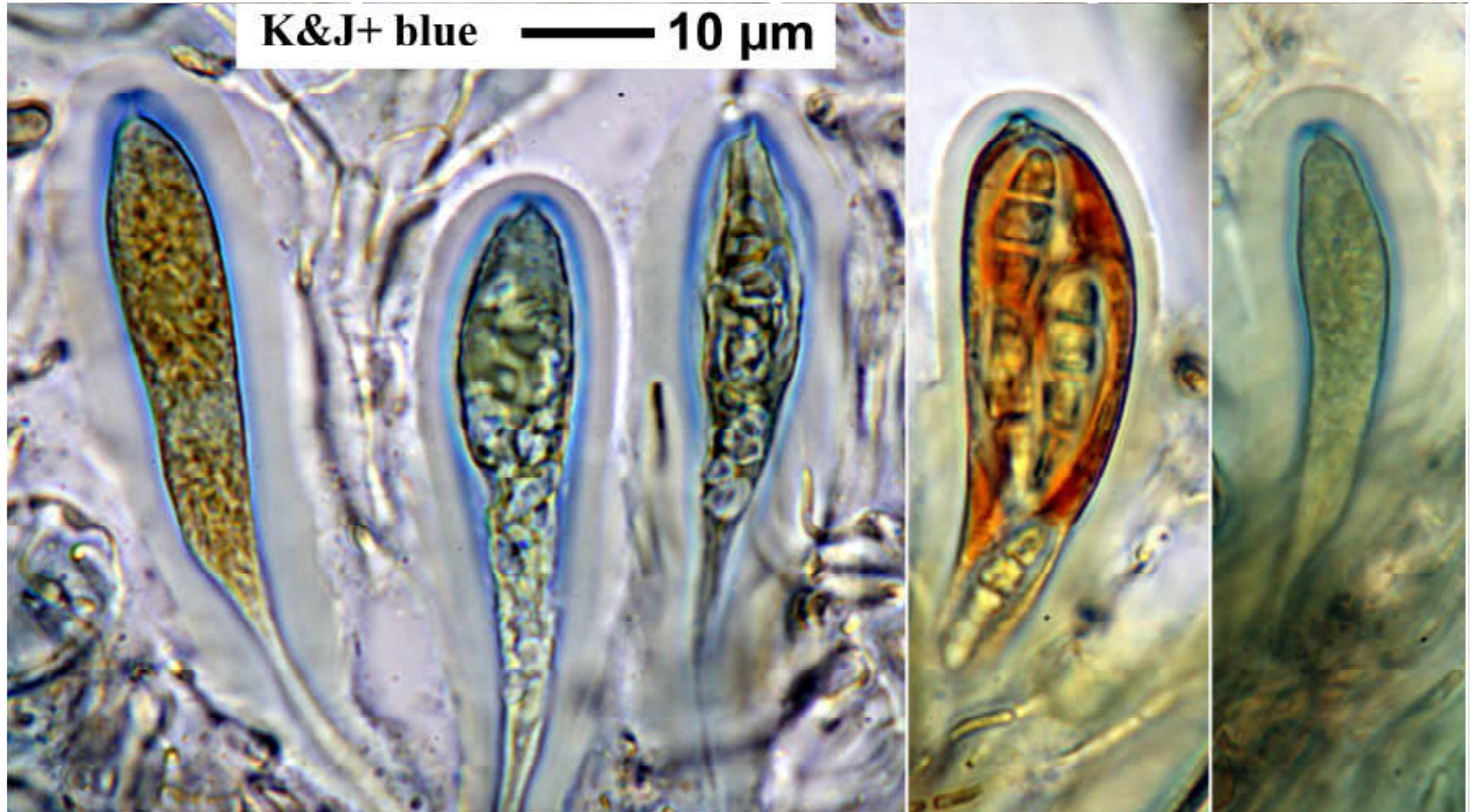
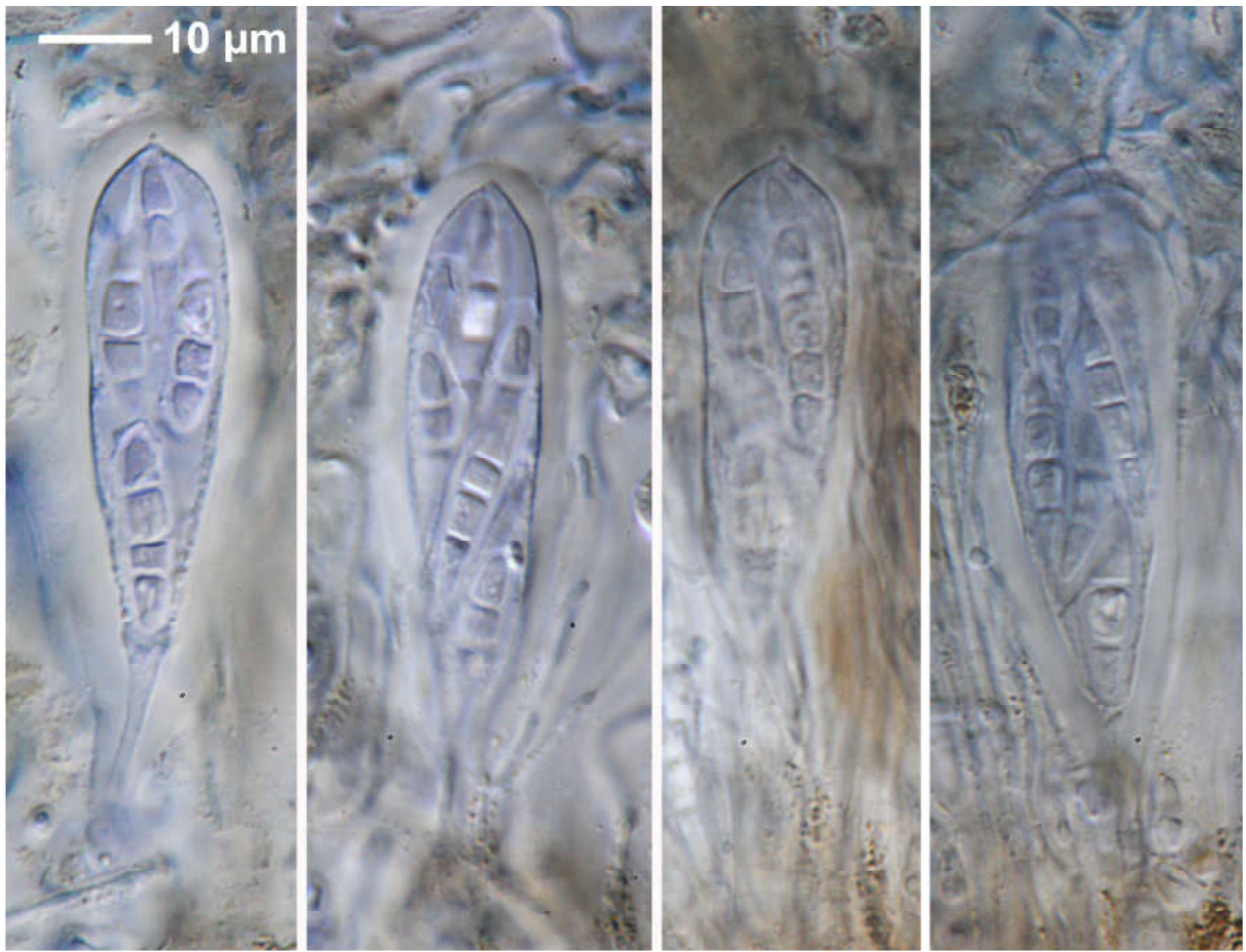




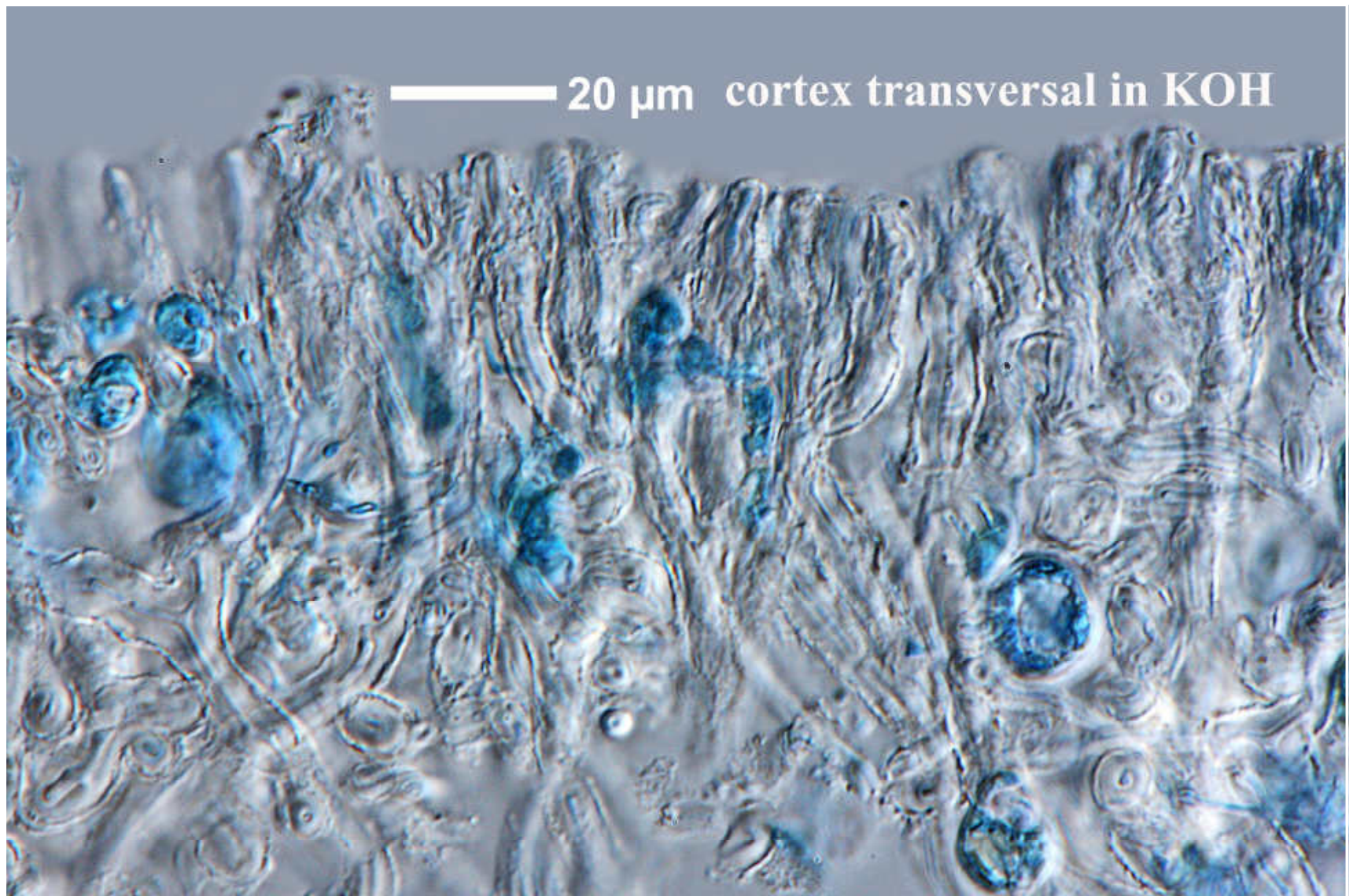
Roccella verruculosa



Roccella verruculosa



Roccella verruculosa



cortex transversal after KOH



Roccella verruculosa