

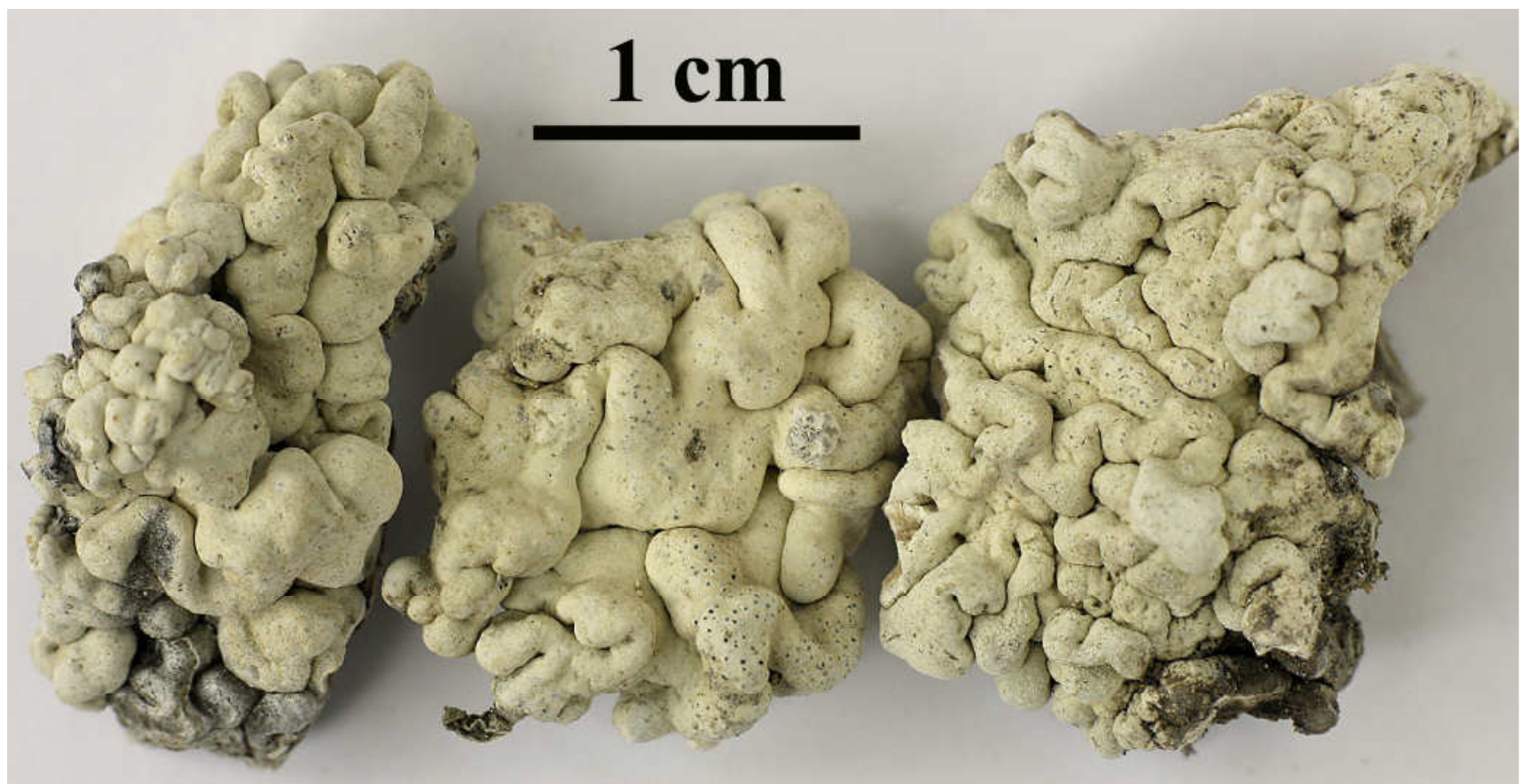
Roccellina cerebriformis (Mont.) Tehler (1983)

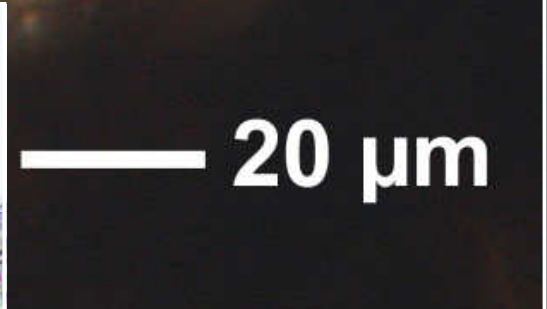
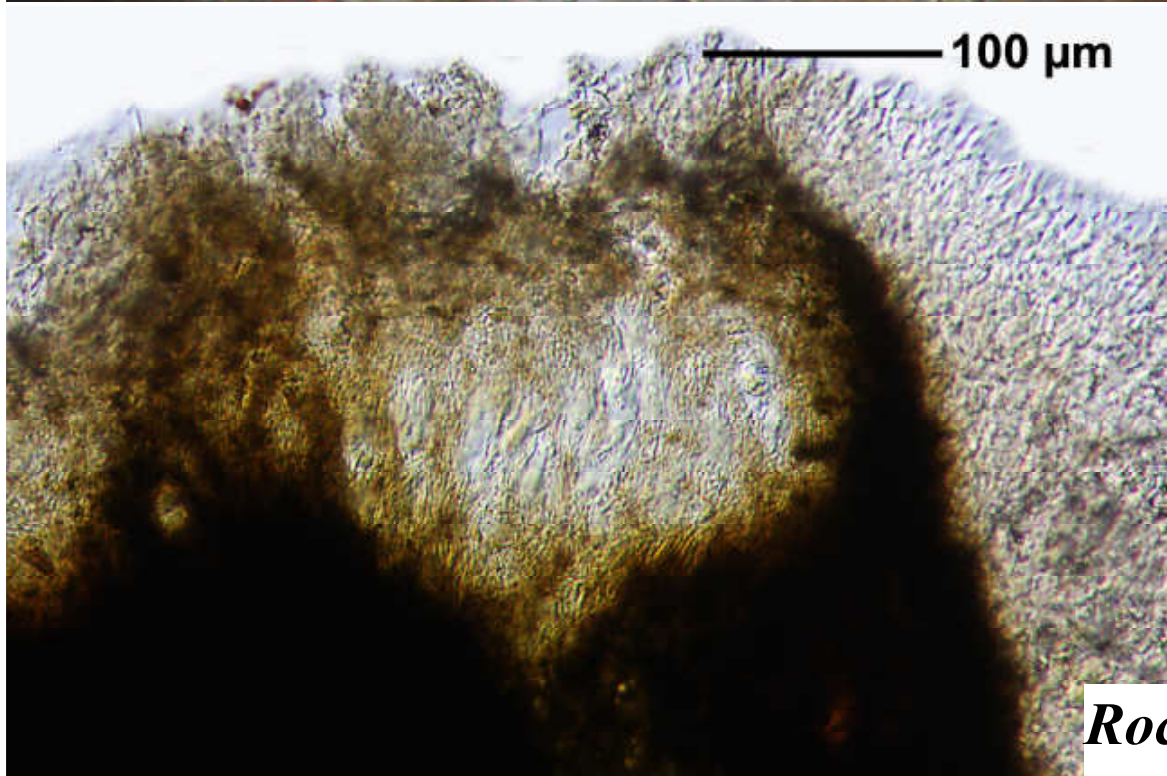
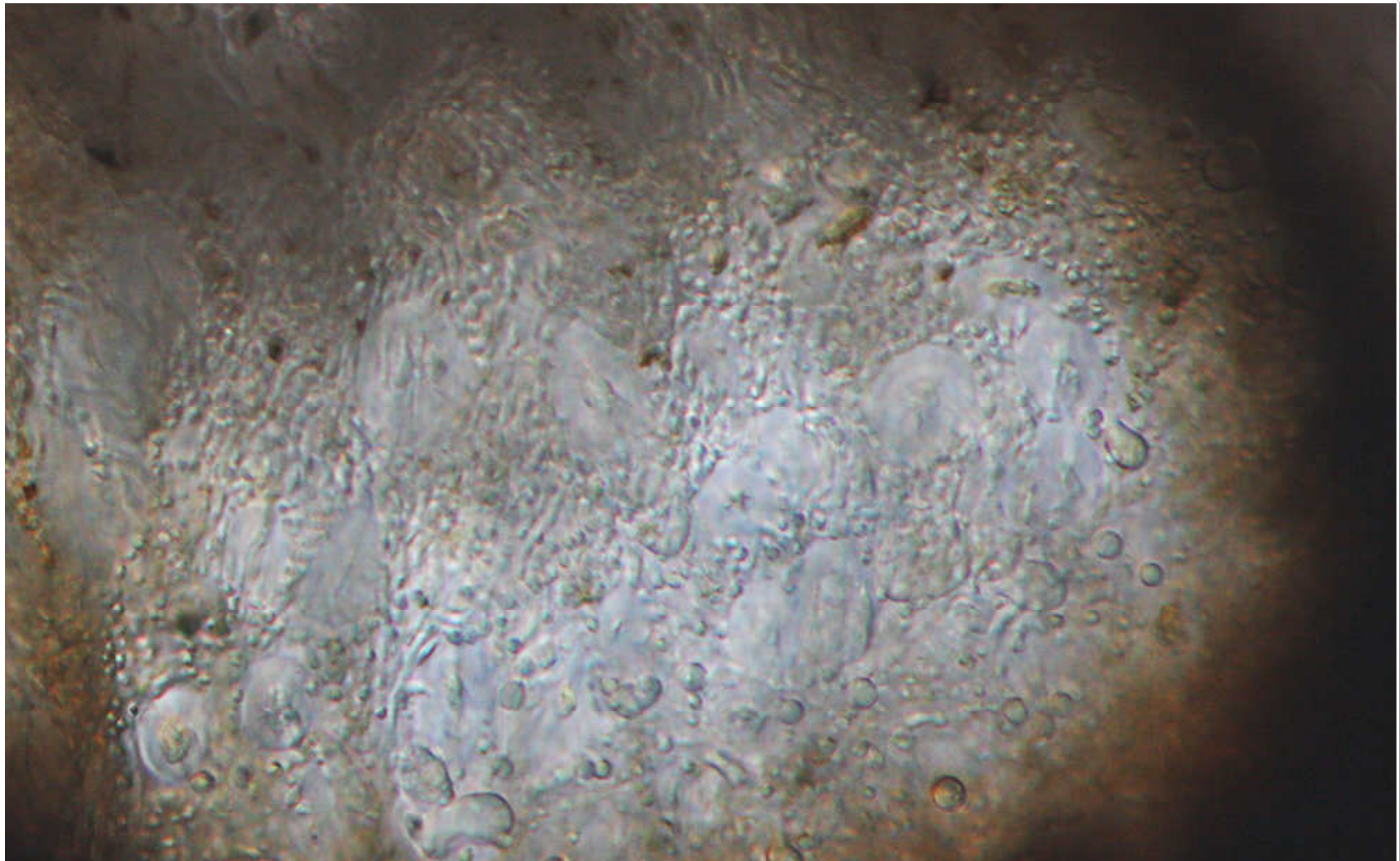
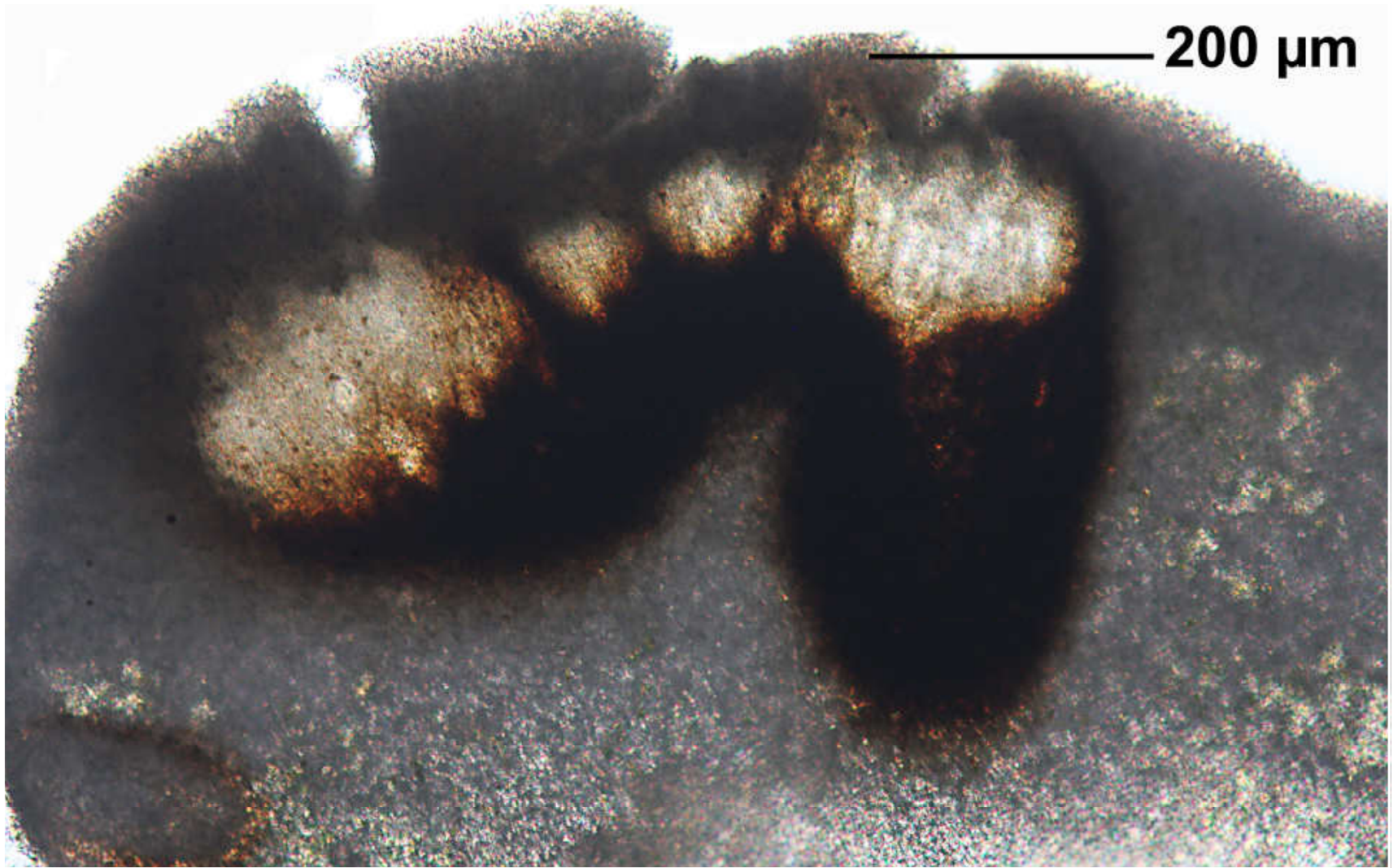
Chiodecton cerebriforme Mont. (1852)

Lobodirina cerebriformis (Mont.) Follmann (1968)

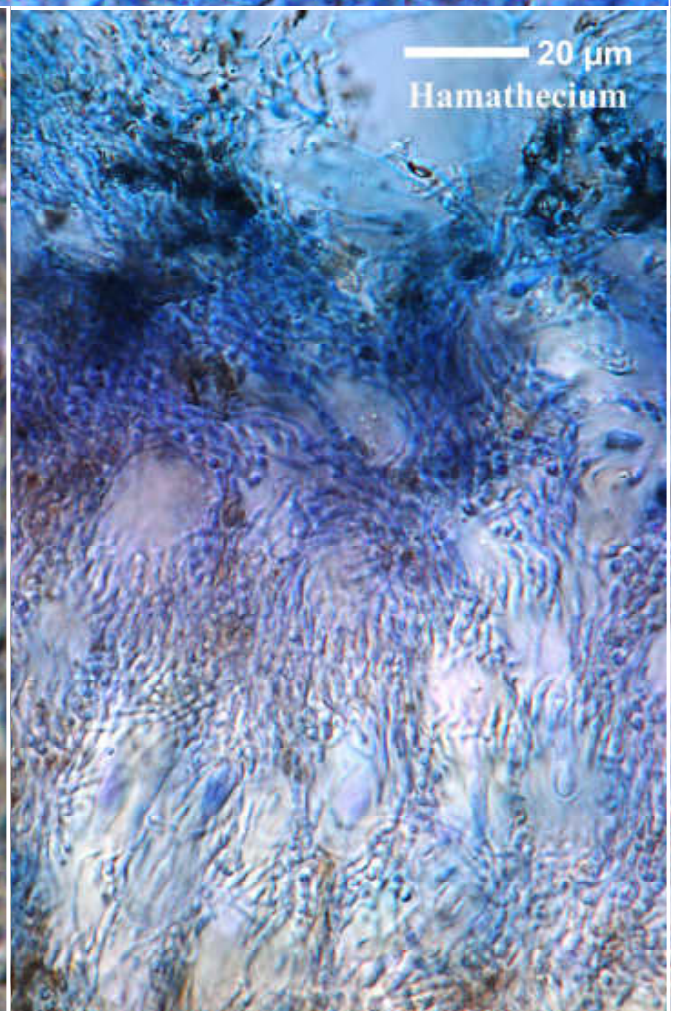
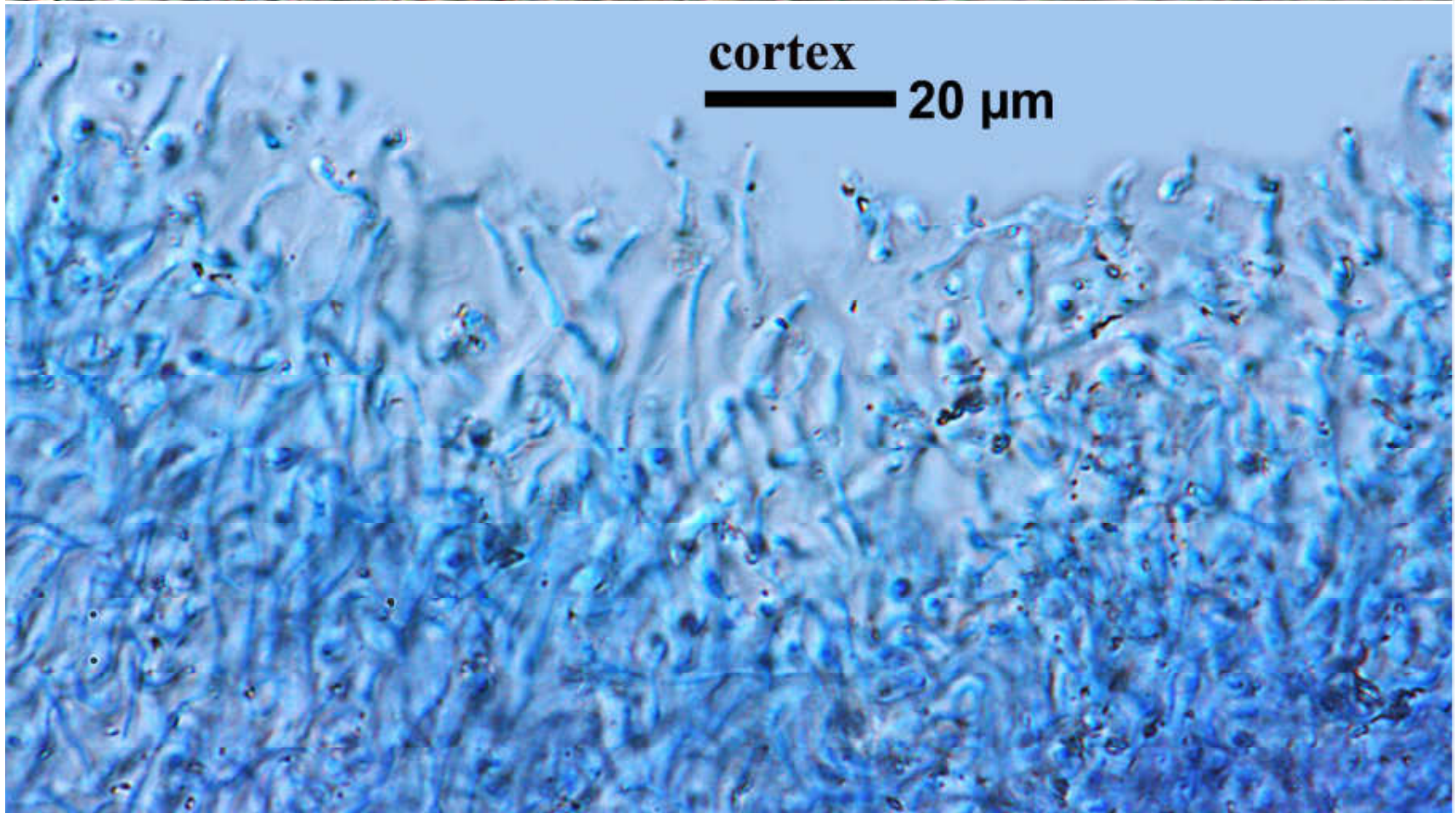
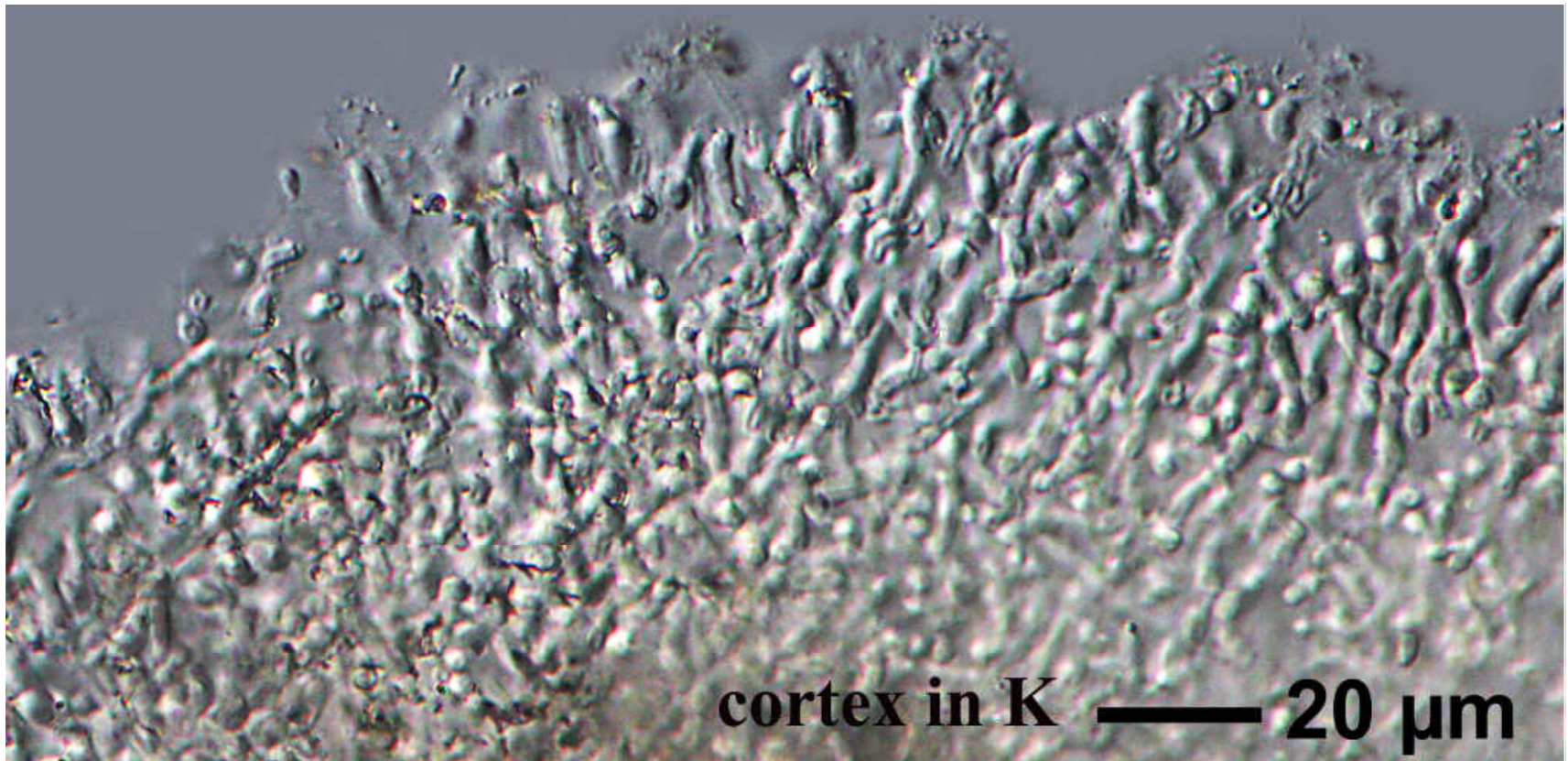
Thallus saxicolous, ochraceous, not sorediate, texture firm, crustose, surface smooth, medulla blackish below. Cortex branched type. Apothecia dissected. Hypothecium black. Ascospores hyaline, 3-septate, $20\text{--}23 \times 3.5\text{--}5.5 \mu\text{m}$. Cortex C –, K –, Pd –, subcortex C –, medulla C –, major substance roccellic. – Chile, Peru.

Chile, Antofagasta, Nature Reserve Quebrada de la Chimba northeast of the capital, upper fog-belt, main canyon, on granodioritic rocks of ridges and slopes of the mountainous border, about 400 m, NW-SW expositiun, gregarious. Leg. et det. G. Follmann Aug. 1993. Lichenes Exsiccati Selecti Ab Instituto Botanico Universitatis Coloniensis Editi Nr. 457. [11084]





Roccellina cerebriformis



Roccellina cerebriformis