

*Roccellina cumingiana* (Gay) Tehler (2007)

*Roccella atacamensis* Follmann (1993)

*Roccella cumingii* Mont. ex Darb. (1898)

*Roccella tinctoria* var. *cumingiana* Gay in Mont. (1852)

Thallus saxicolous, grey, sorediate, texture firm, cylindrical, surface dull, holdfast internally white to brown. Cortex dense branched type. Apothecia unknown. Cortex C + red, K –, Pd –, subcortex C + red, medulla C –, major substance lecanoric. – Chile.

Nordchile: Antofagasta, Mejillones Peninsula, southwestern slope of Cerro Moreno, central fog-belt, on half-shaded vertical or overhanging faces of granodioritic boulders, ca. 500 m, SW expon., locally abundant. Leg. G. Follmann 08.1991. Lichenes Exsiccati Selecti Ab Instituto Botanico Universitatis Coloniensis Editi Nr. 444. (ISOTYPUS of *Roccella atacamensis* Follmann). [12000]

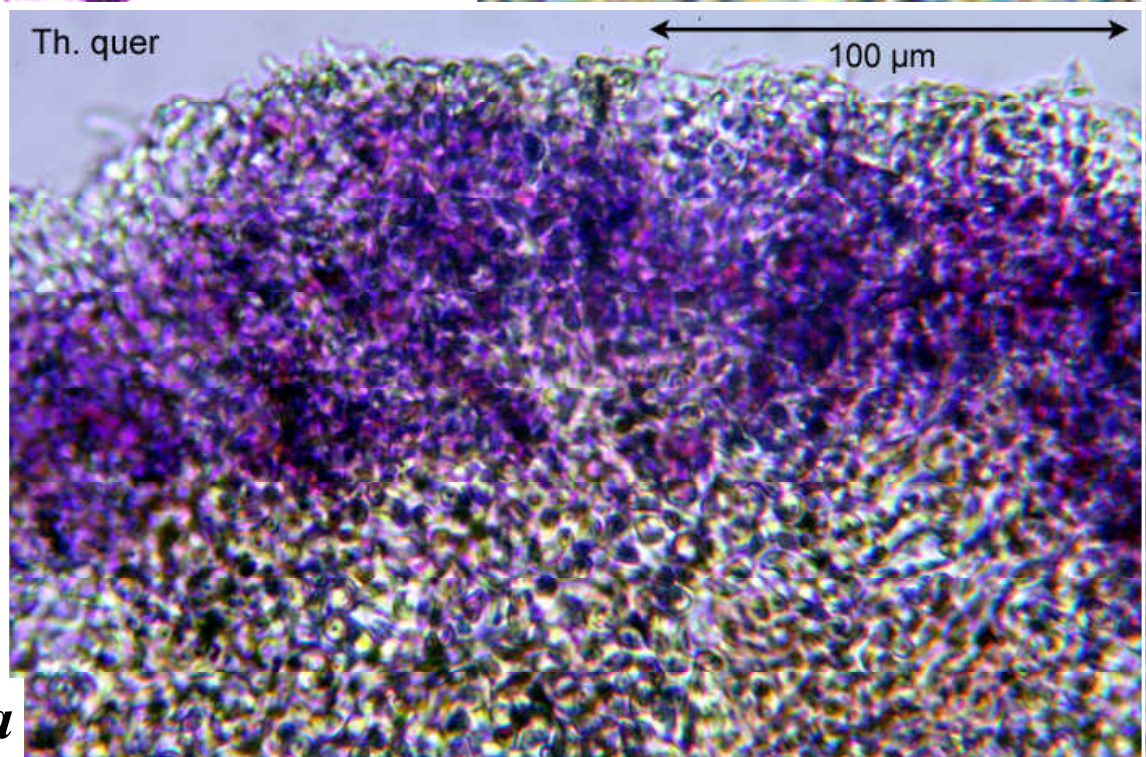
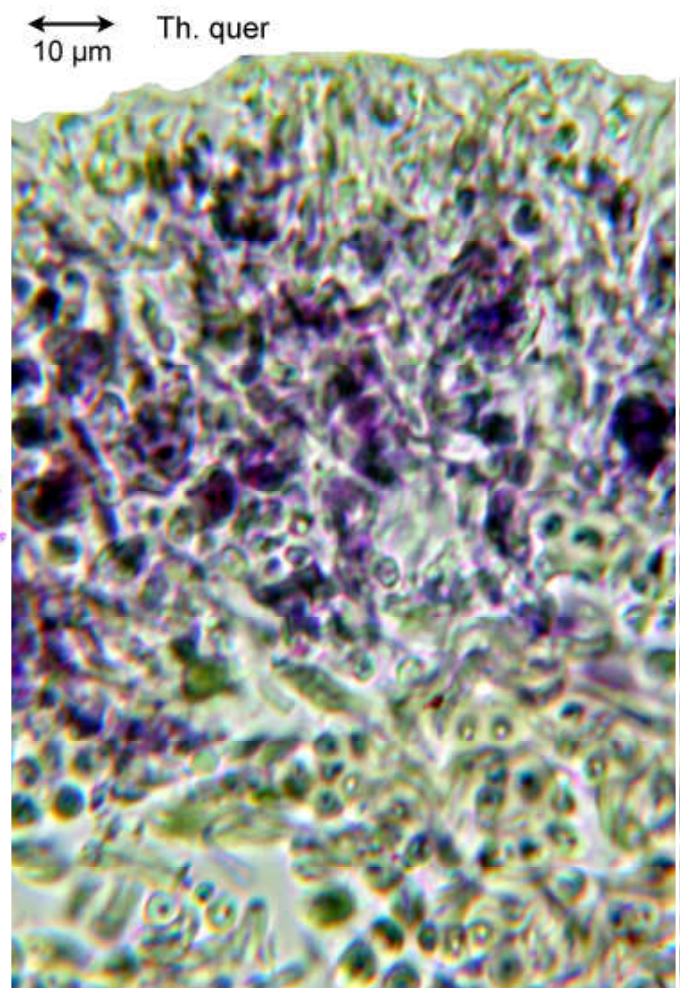
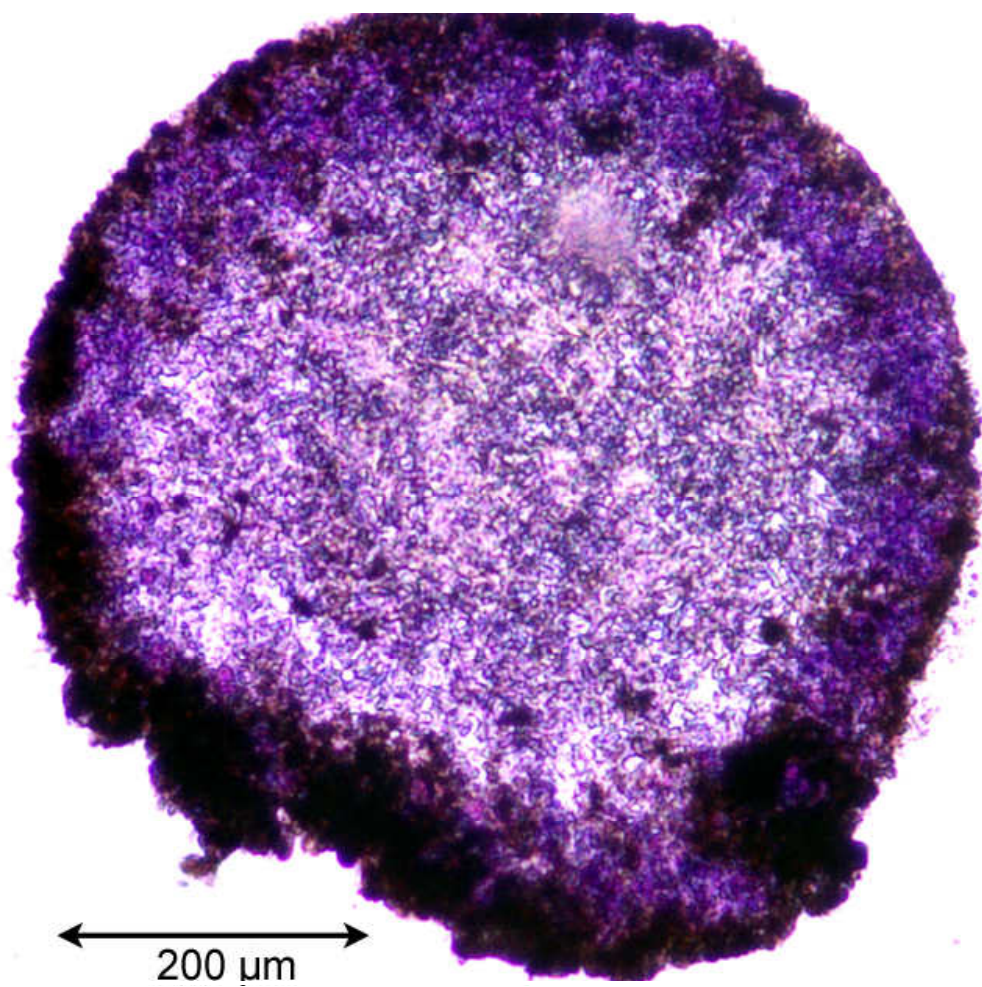




*Roccellina cumingiana*



*Roccellina cumingiana*



*Roccellina cumingiana*