

Roccellina hypomecha (Ach.) Tehler (2007)

Roccella capensis Follmann (1994)

Roccella hypomecha (Ach.) Bory (1828)

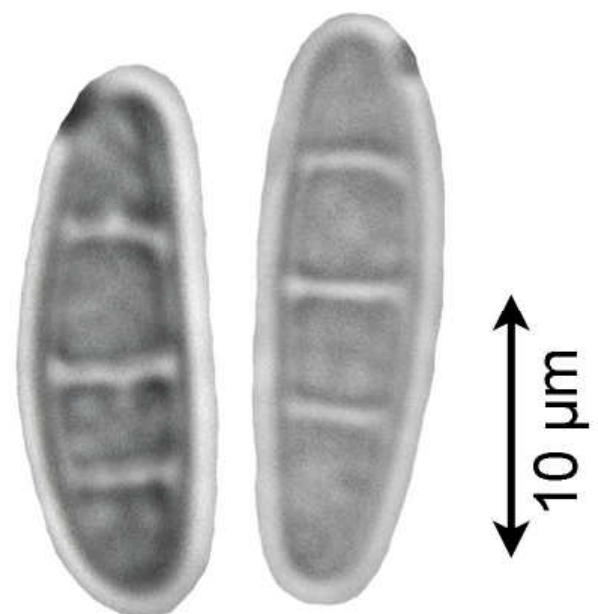
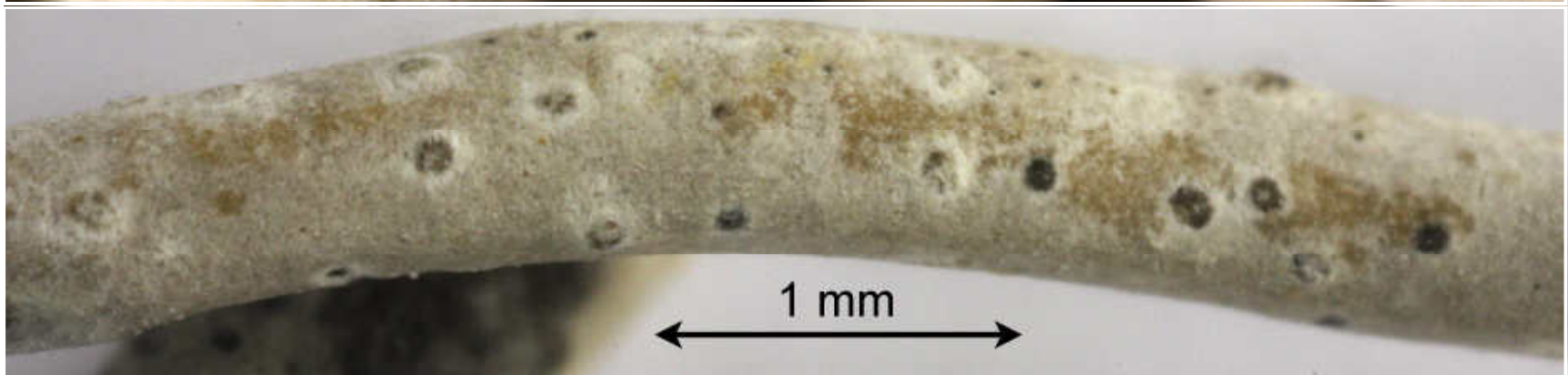
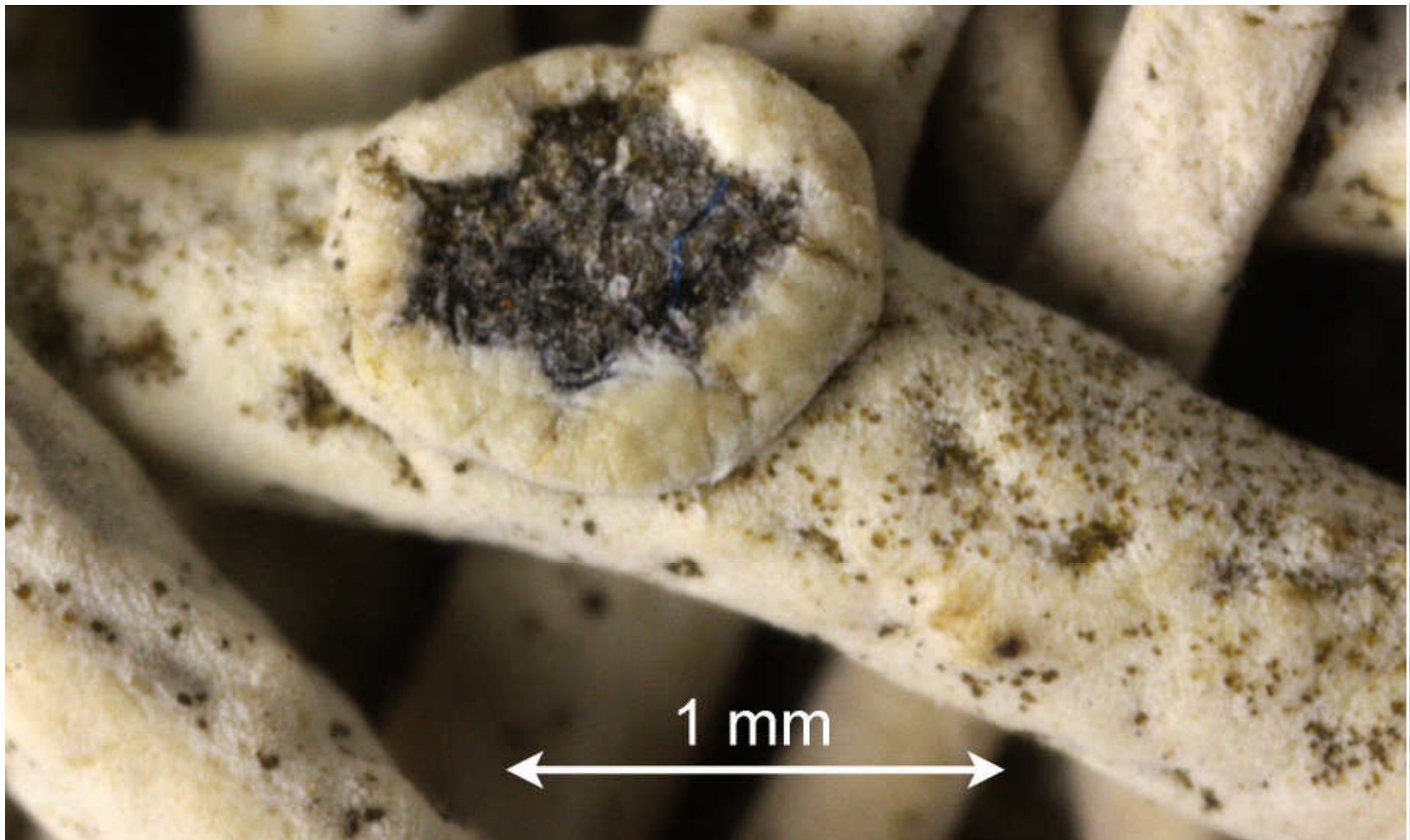
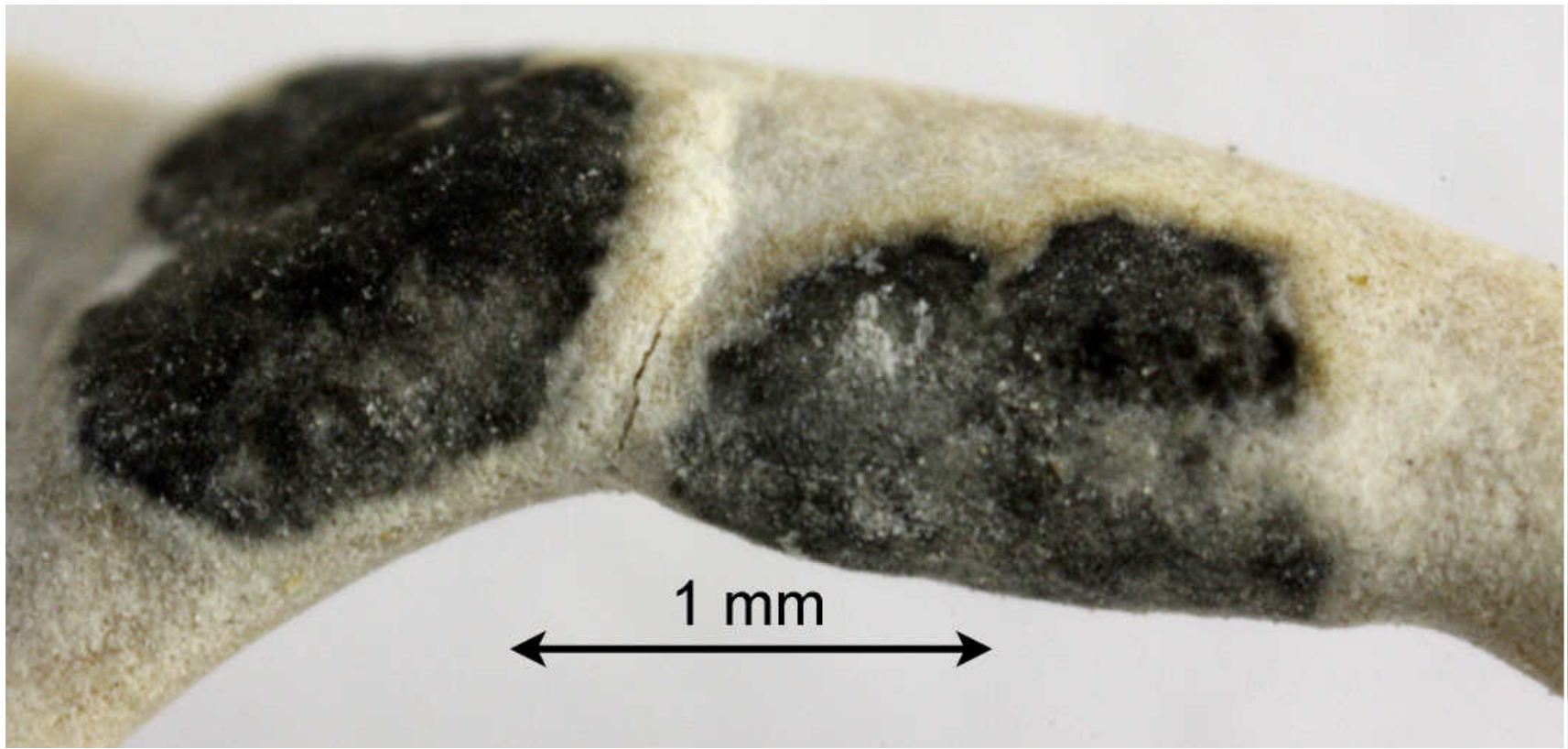
Roccella hypomecha var. *benguellensis* (Welw.) Vain. (1901)

Roccella tinctoria var. *hypomecha* (Ach.) Ach. (1814)

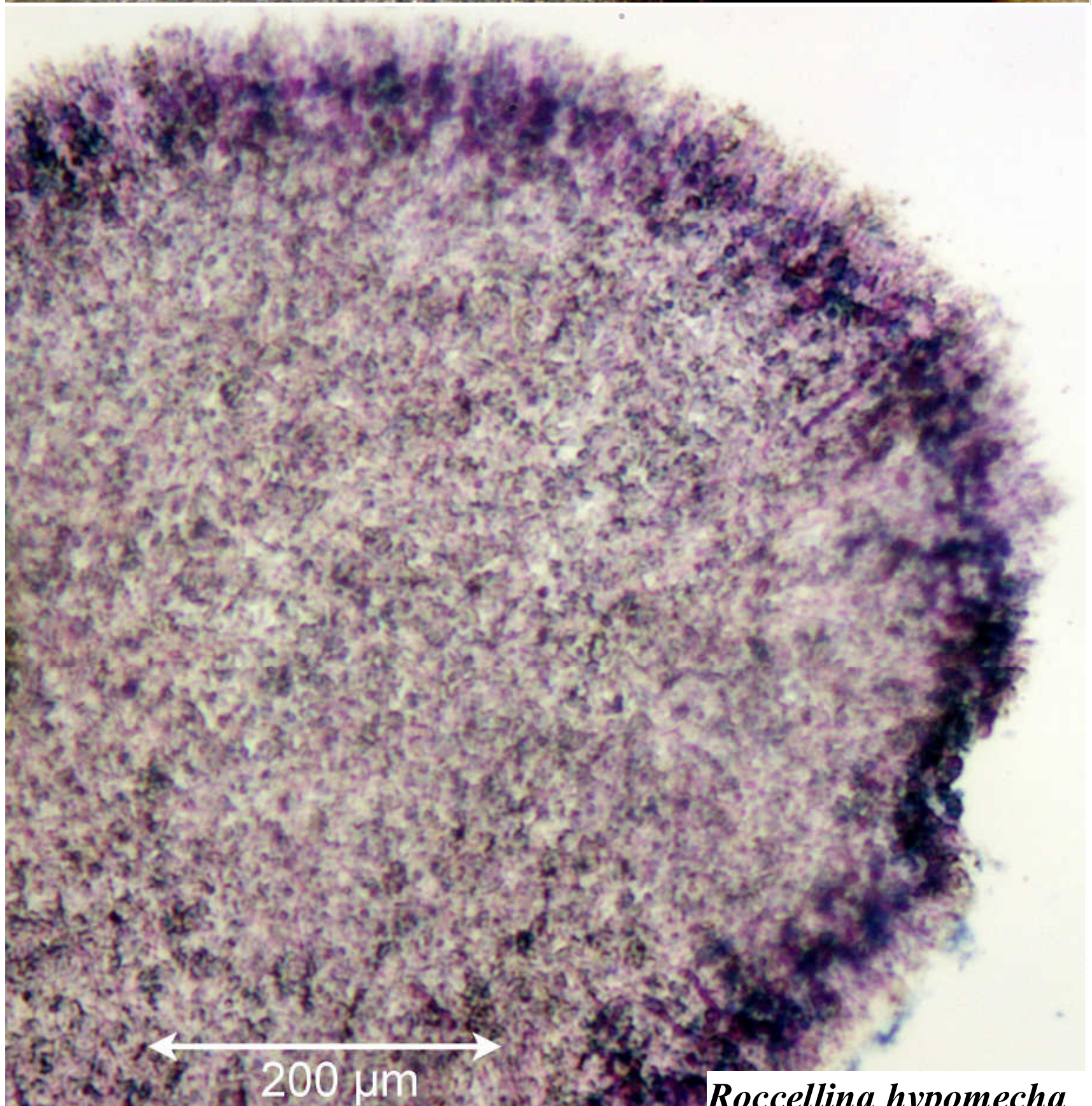
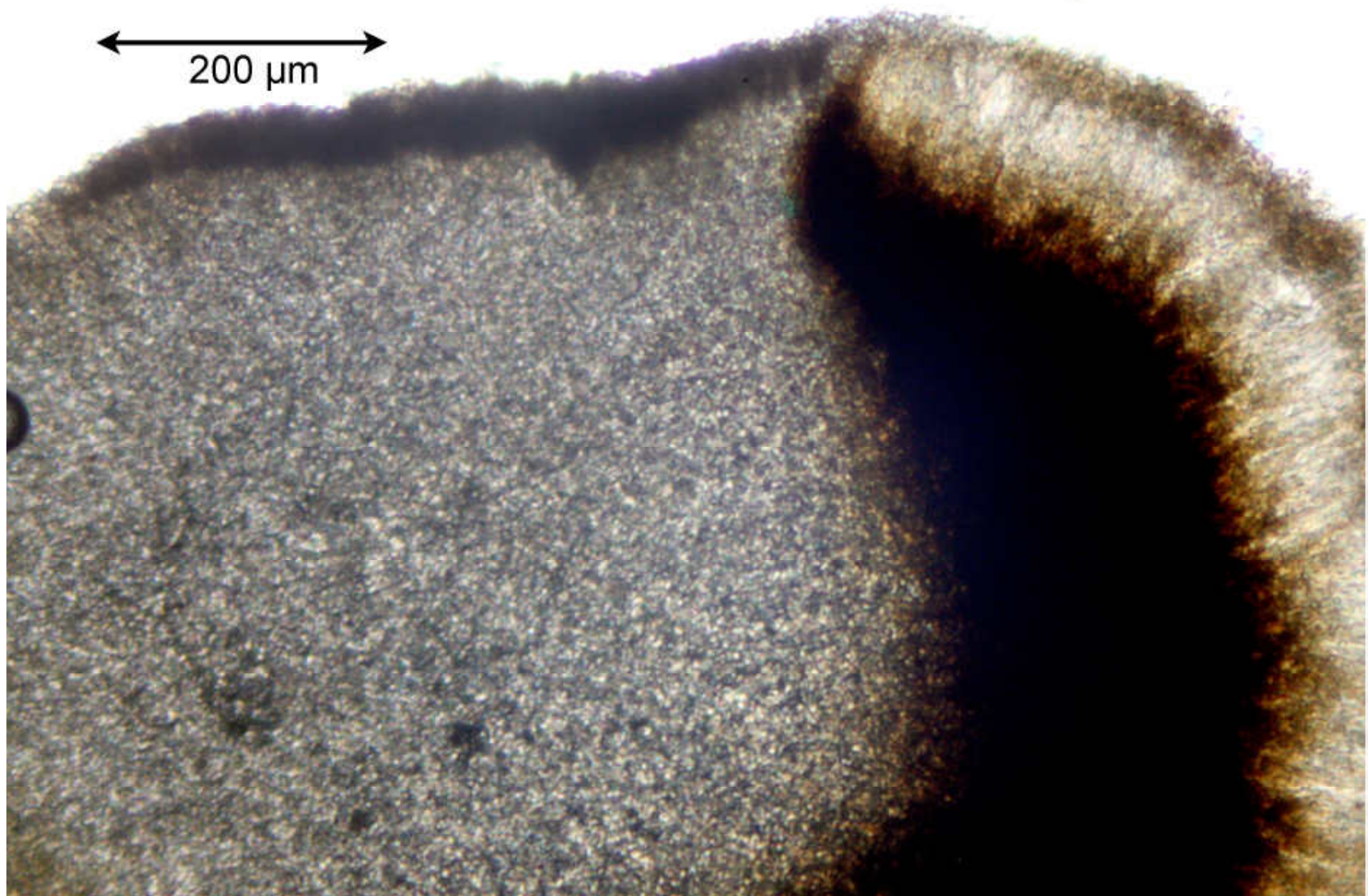
Thallus saxicolous, grey, not soresiate, texture firm, cylindrical, surface dull, holdfast internally white to brown. Cortex intermediate to branched type. Apothecia round. Hypothecium black. Ascospores hyaline, 3-septate, $18-19 \times 5-6 \mu\text{m}$. Cortex C –, K –, Pd –, subcortex C –, medulla C – or + red, major substances \pm roccellic, \pm lecanoric. – Madeira, Canary Isles, Cape Verde Islands, W. & S. Africa.

South Africa: Cape Province, District of Simonstown, Cape of Good Hope Nature Reserve, below Pehram's Point, on exposed vertical walls of rugged siliceous rock within reach of the marine aerosol, avoiding fissures, with *Roccellina capensis*, 30-50 m. Leg. G. Follmann 02.1990. Lichenes Exsiccati Selecti Ab Instituto Botanico Universitatis Coloniensis Editi Nr. 486 (as *Roccella hypomecha*). [11670]

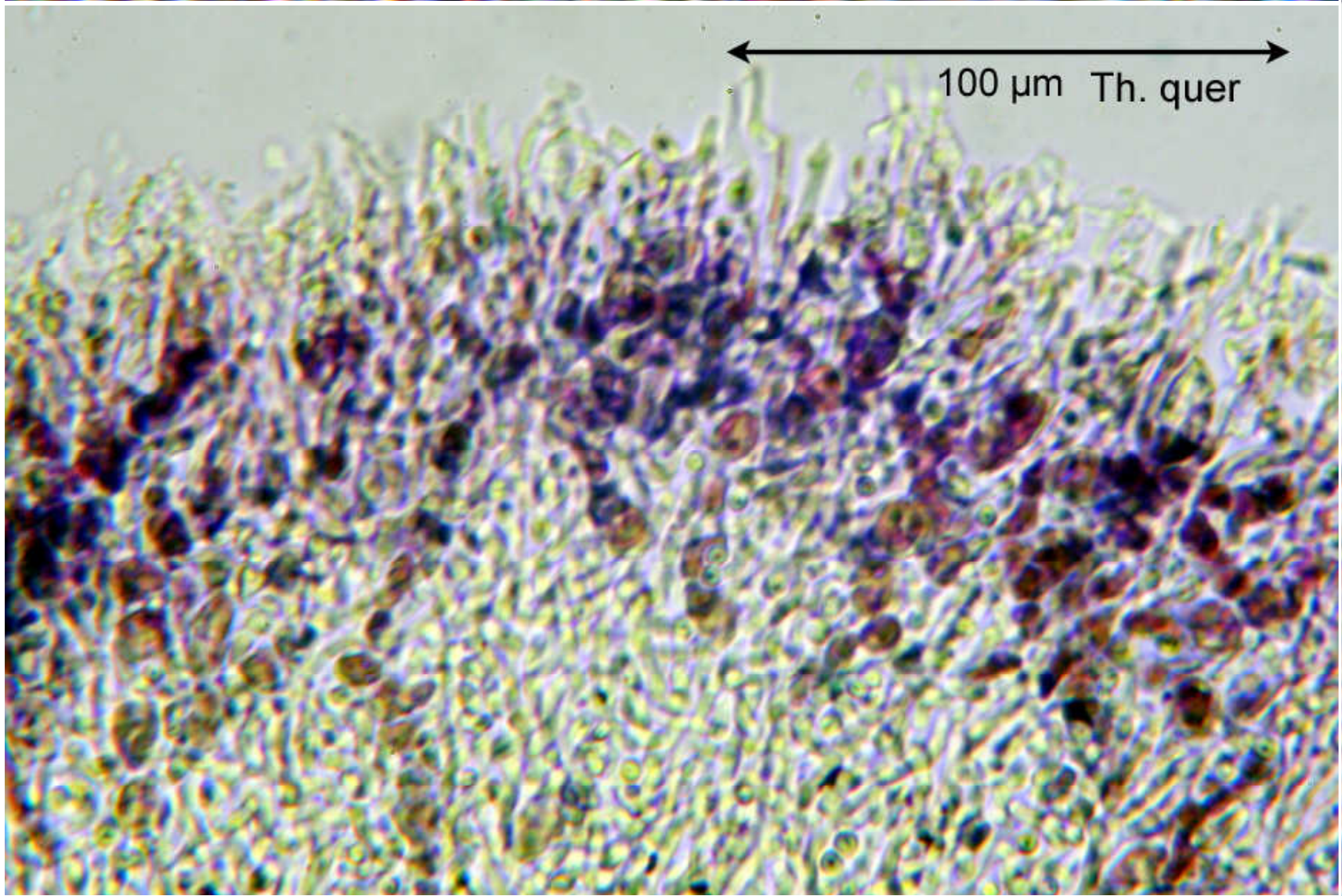
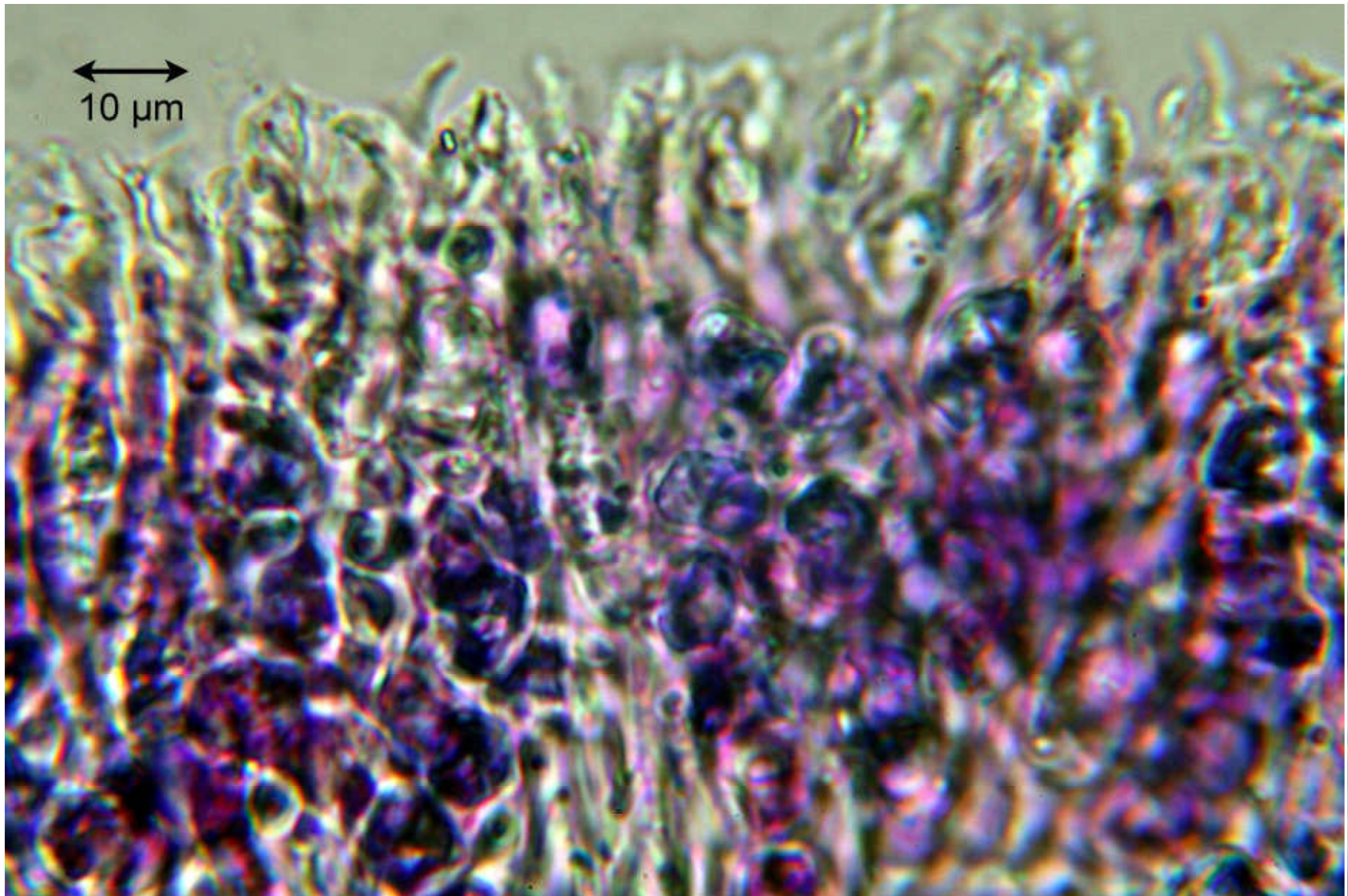




Roccellina hypomecha



Roccellina hypomecha



Roccellina hypomecha