

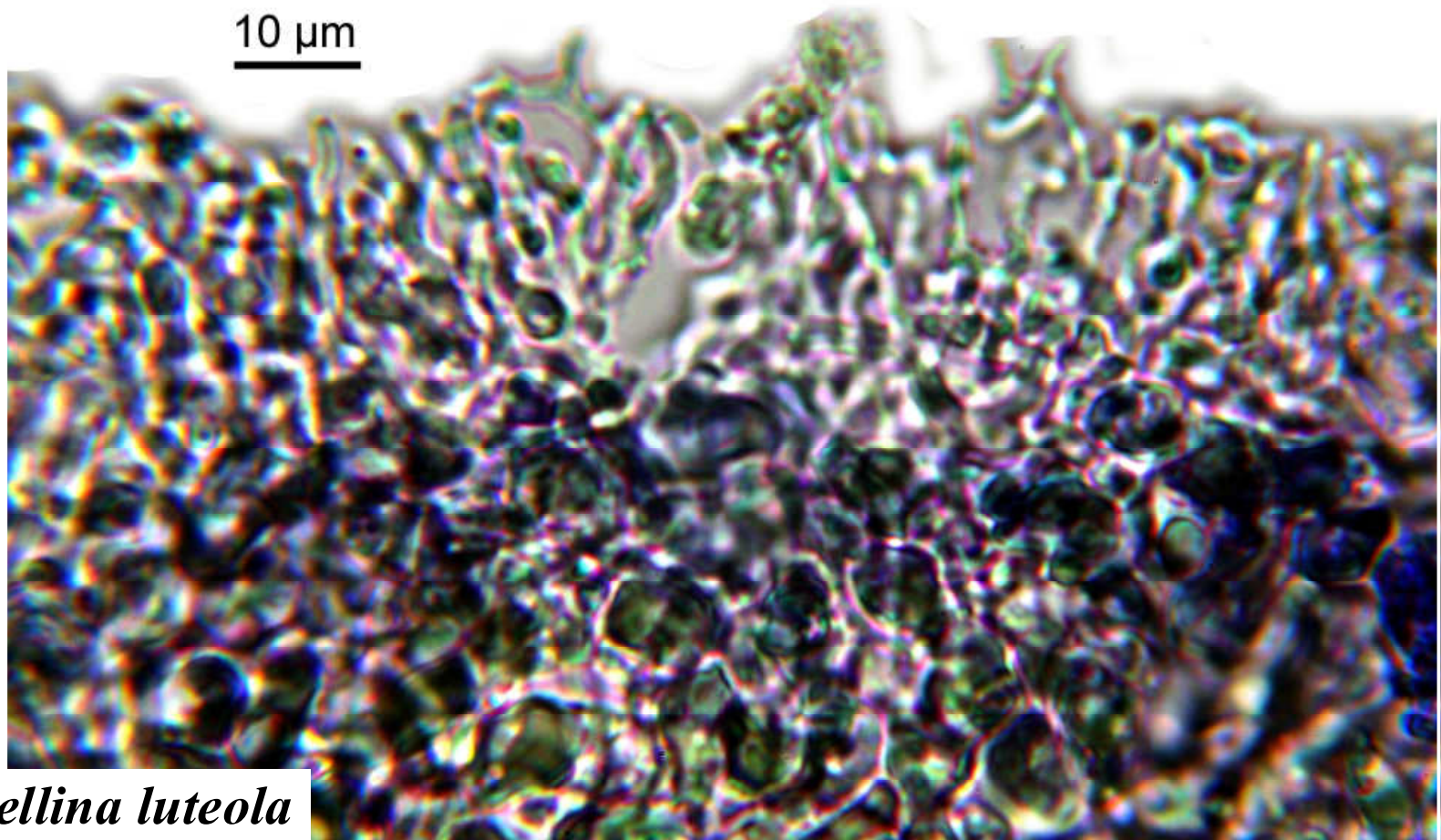
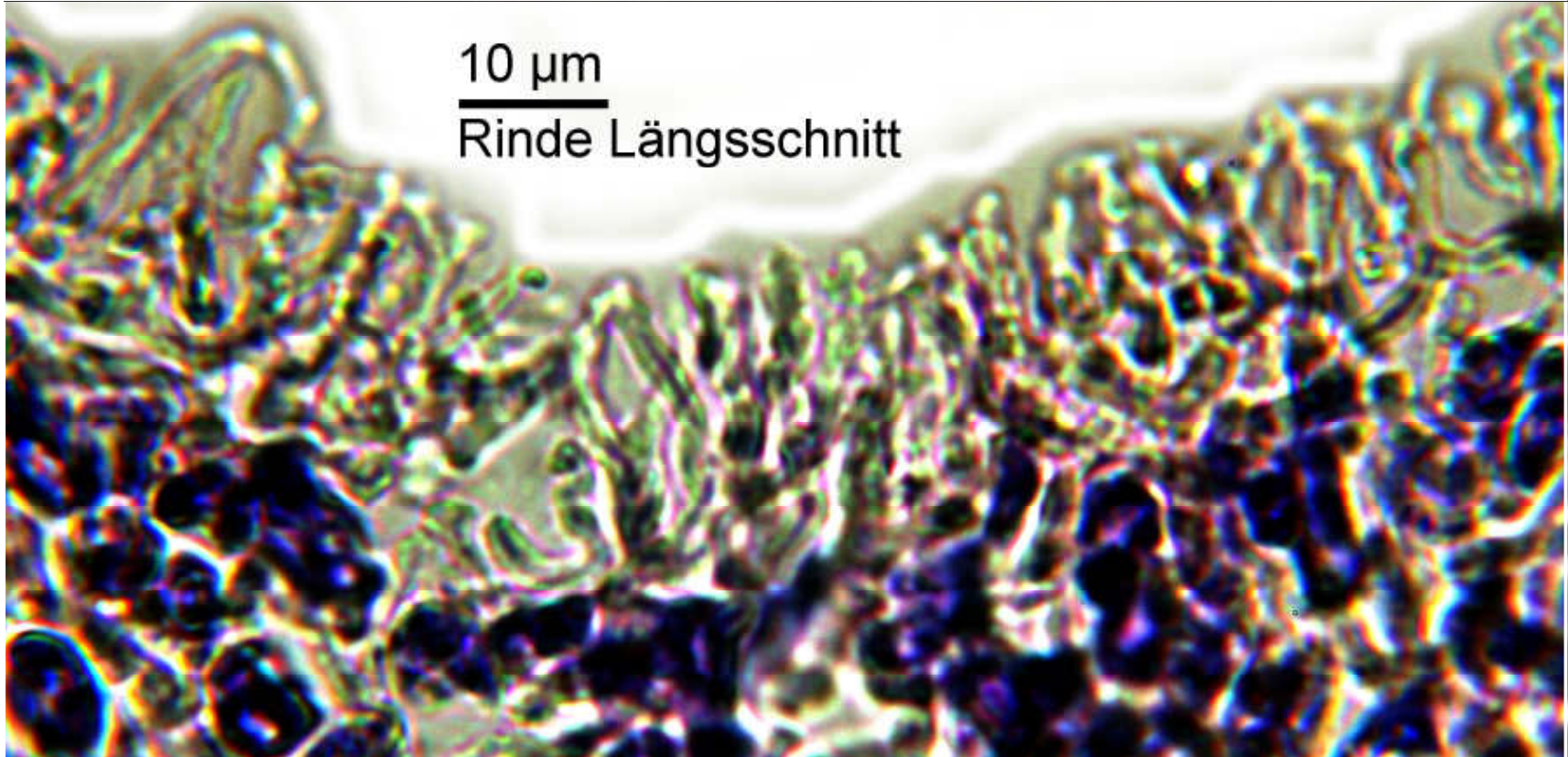
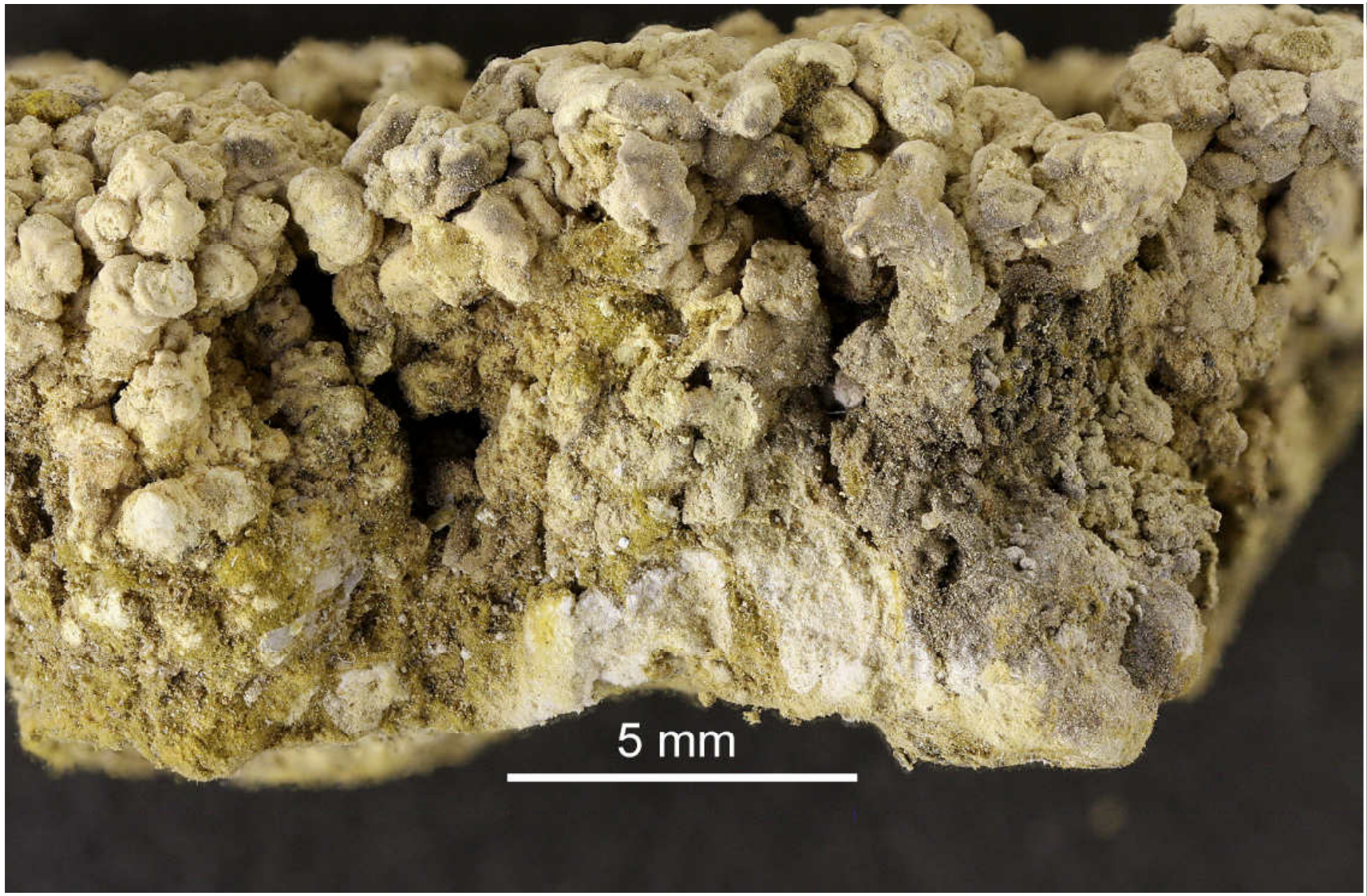
*Roccellina luteola* Follmann (1967)

Thallus saxicolous, yellow, not sorediate, texture firm, crustose, surface smooth. Cortex branched type. Apothecia round or dissected. Hypothecium black. Ascospores hyaline, 3-septate,  $25\text{--}30 \times 4\text{--}5\ \mu\text{m}$ . Cortex C + red, K –, Pd –, subcortex C –, medulla C –, K + orange, major substances schizopeltic, lecanoric, skyrin. – Chile.

Nordchile, Prov. Antofagasta: koloniebildend an Stirnflächen und Überhängen von Diorithöckern im *Roccelletum portentosae*, 500 m, pH 6,5, Nebelzone am Cerro Moreno, Halbinsel Mejillones unweit Antofagasta. Leg. G. Follmann 09.1965. Lichenes Exsiccati Selecti A Museo Botanica Berolinensi Editi Nr. 54 (ISOTYPUS). [2556]

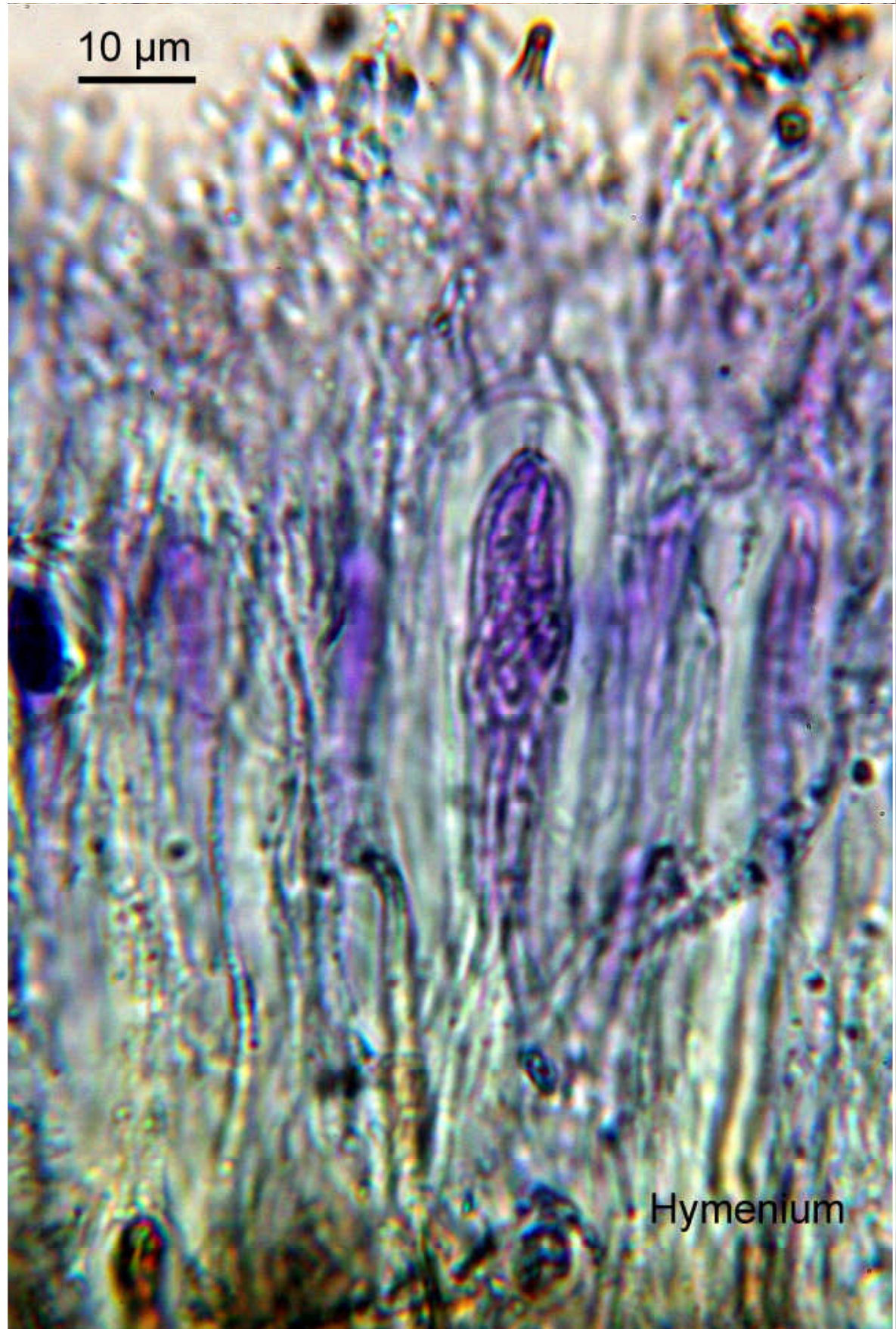
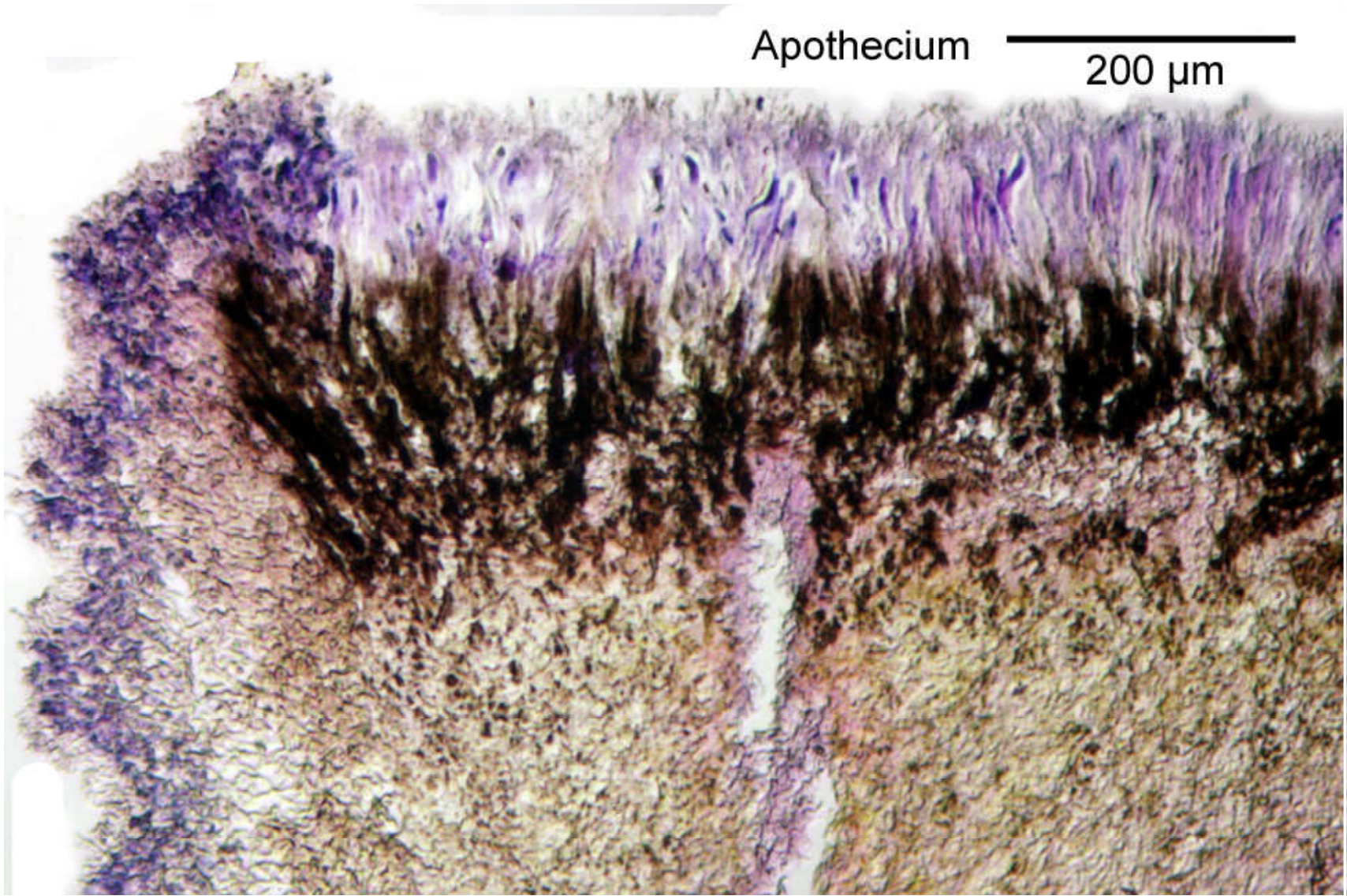






*Roccellina luteola*





*Roccellina luteola*