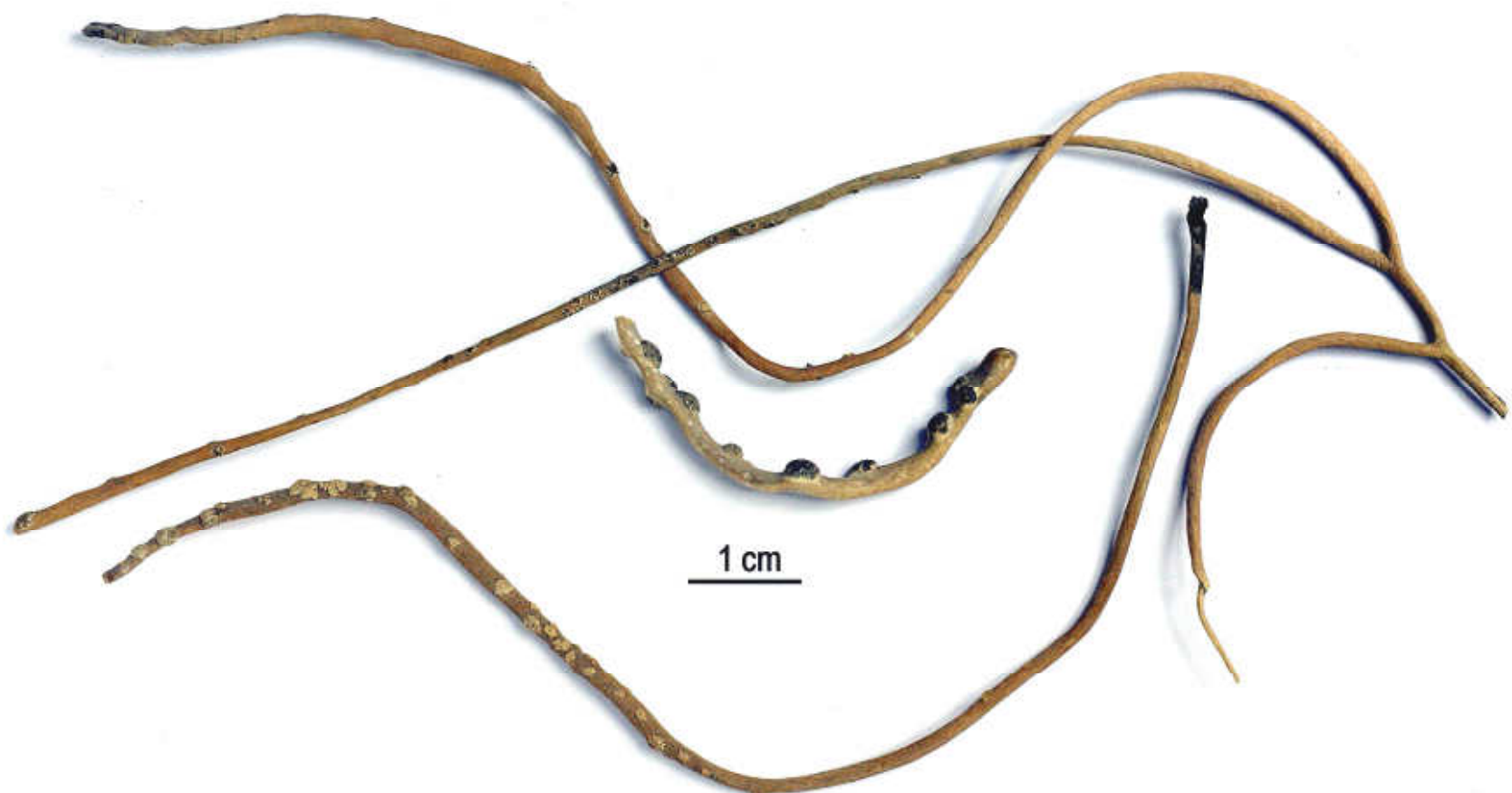
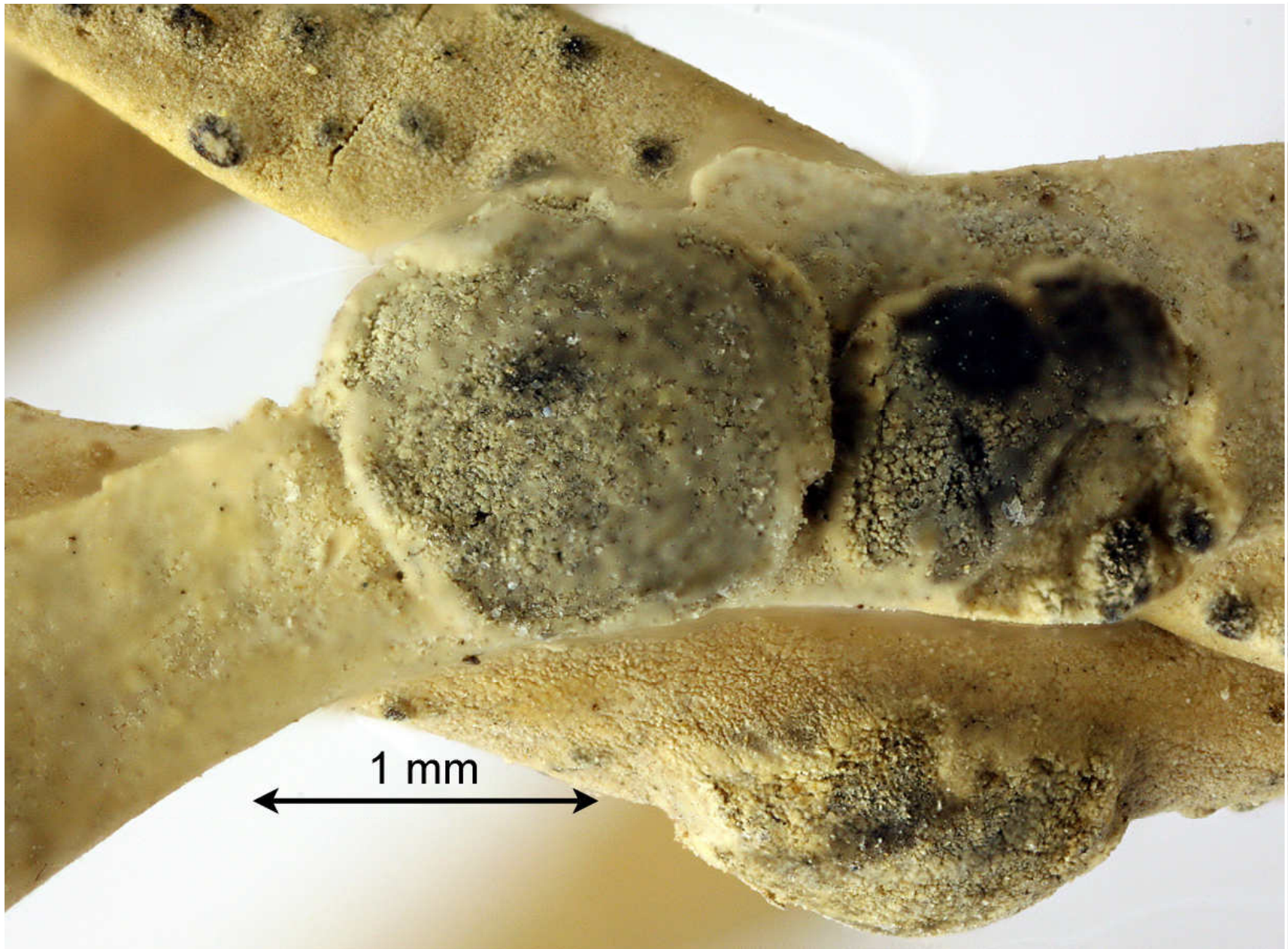


Roccellina portentosa (Gay) Tehler (2007)
Roccella fauiformis Bory ex Darb. (1898)
Roccella gayana Mont. (1852)
Roccella portentosa (Gay) Darb. (1898)
Roccella taeniata Mont. ex Darb. (1898)
Roccella tinctoria var. *portentosa* Mont. (1852)

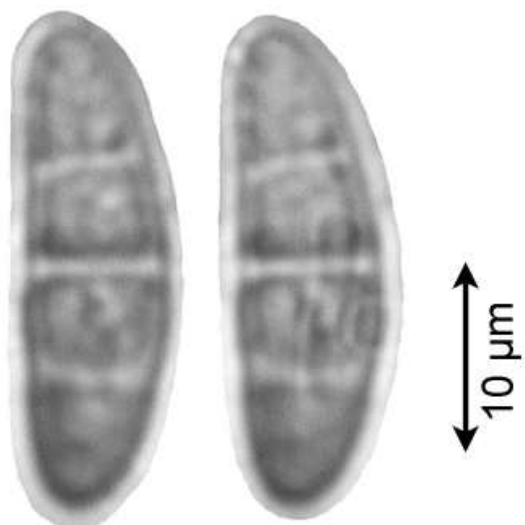
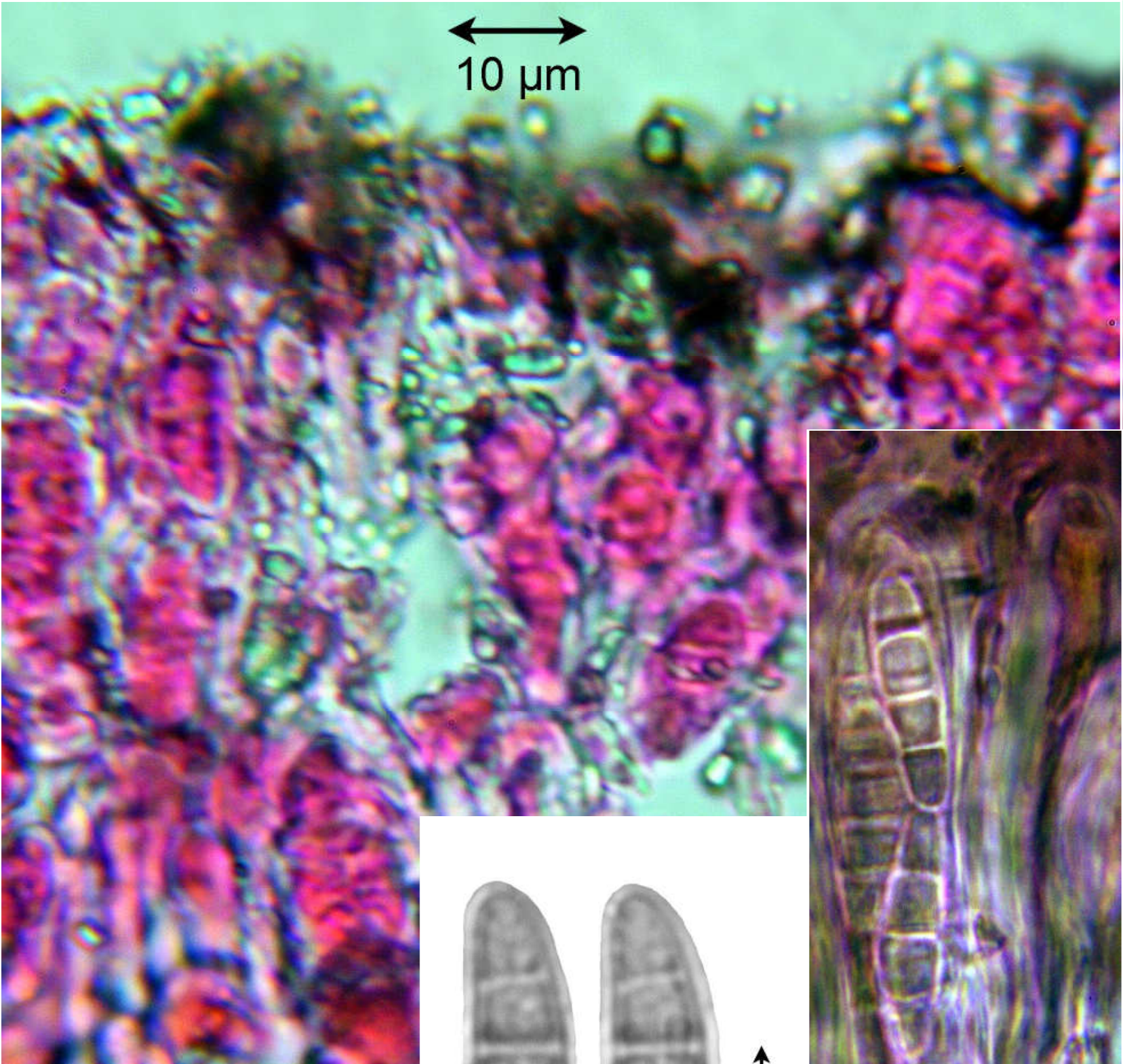
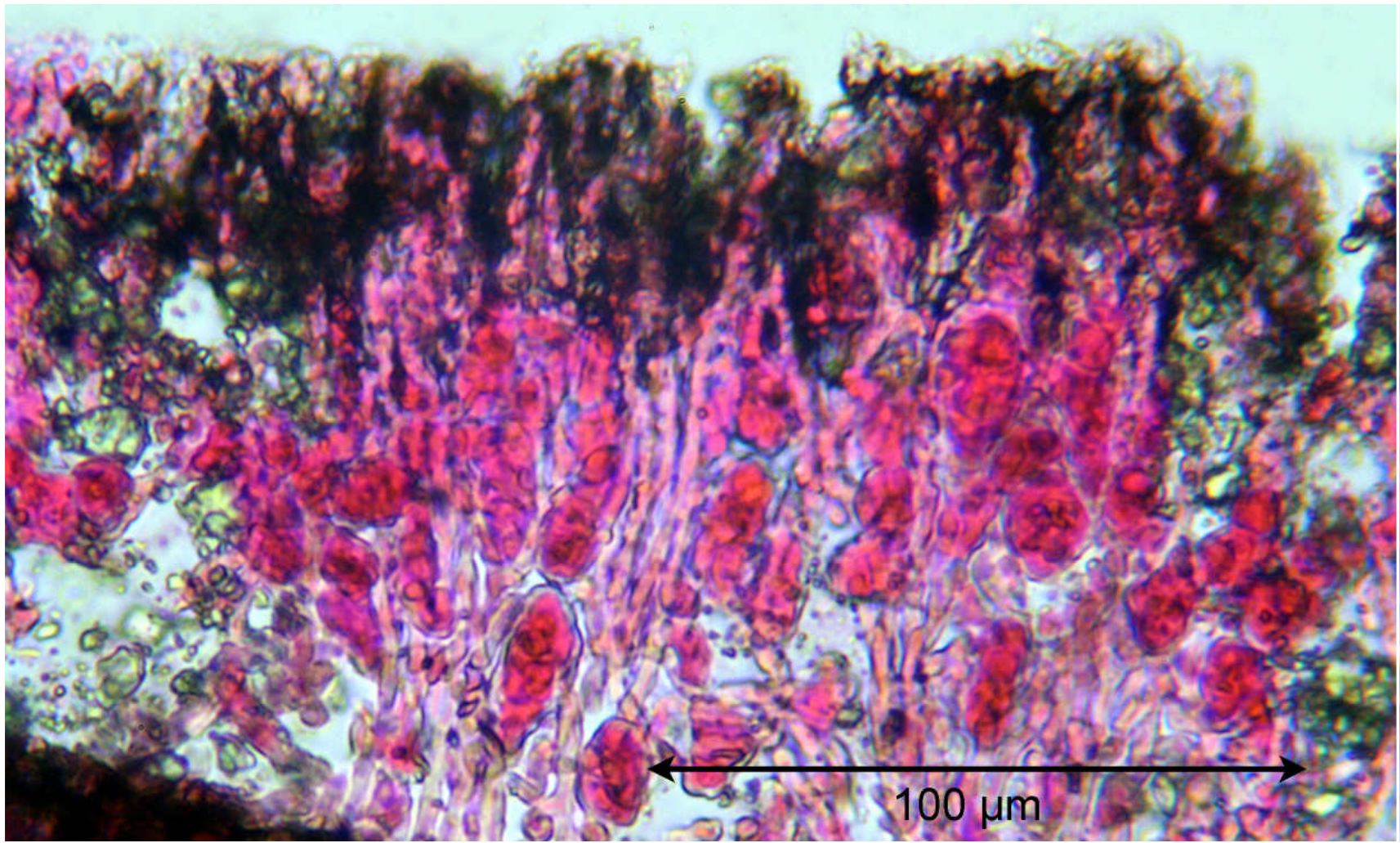
Thallus saxicolous, grey, not sorediate, texture firm, cylindrical, surface dull, holdfast internally white to brown. Cortex intermediate type. Apothecia round. Hypothecium black. Ascospores hyaline, 3-septate, $22\text{--}25 \times 7\text{--}8 \mu\text{m}$. Cortex C + red, K –, Pd –, subcortex C –, medulla C –, K + orange, major substances \pm erythrin, lecanoric, skyrin. –Chile, Peru.

Mittelchile, Prov. Aconcagua: häufig an stark geneigten Küstenfelsen (Granodiorit) im *Roccelletum portentosae* Folln., 20 m, SW, pH 6,5, zwischen Papudo und Zapallar. Leg. G. Follmann X.1964. Lichenes Exsiccati Selecti A Museo Botanico Berolinensi Editi Nr. 12. [2555]





Roccellina portentosa



Roccellina portentosa