

*Santessonia hereroensis* (Vain.) Follmann (1987)

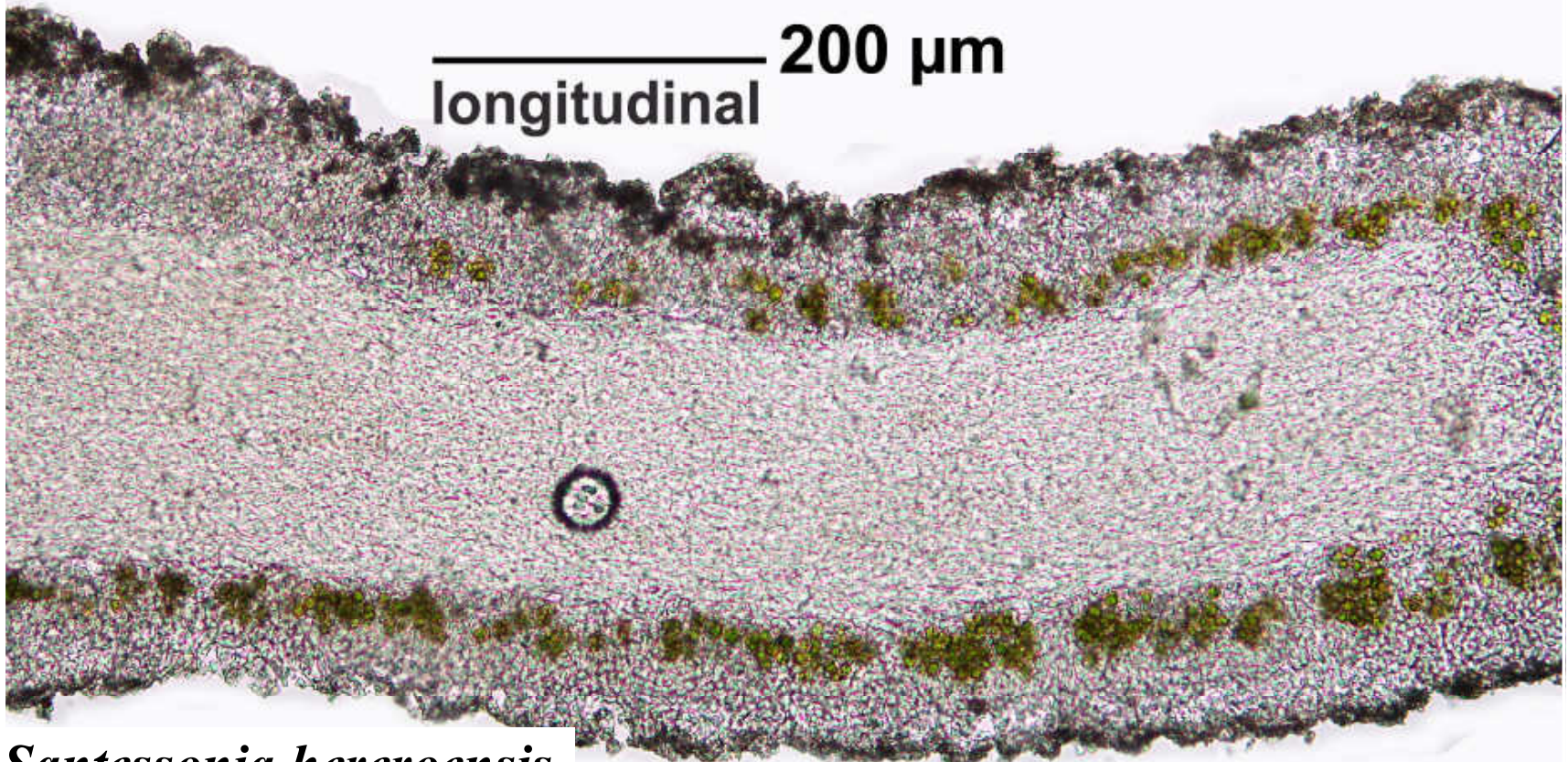
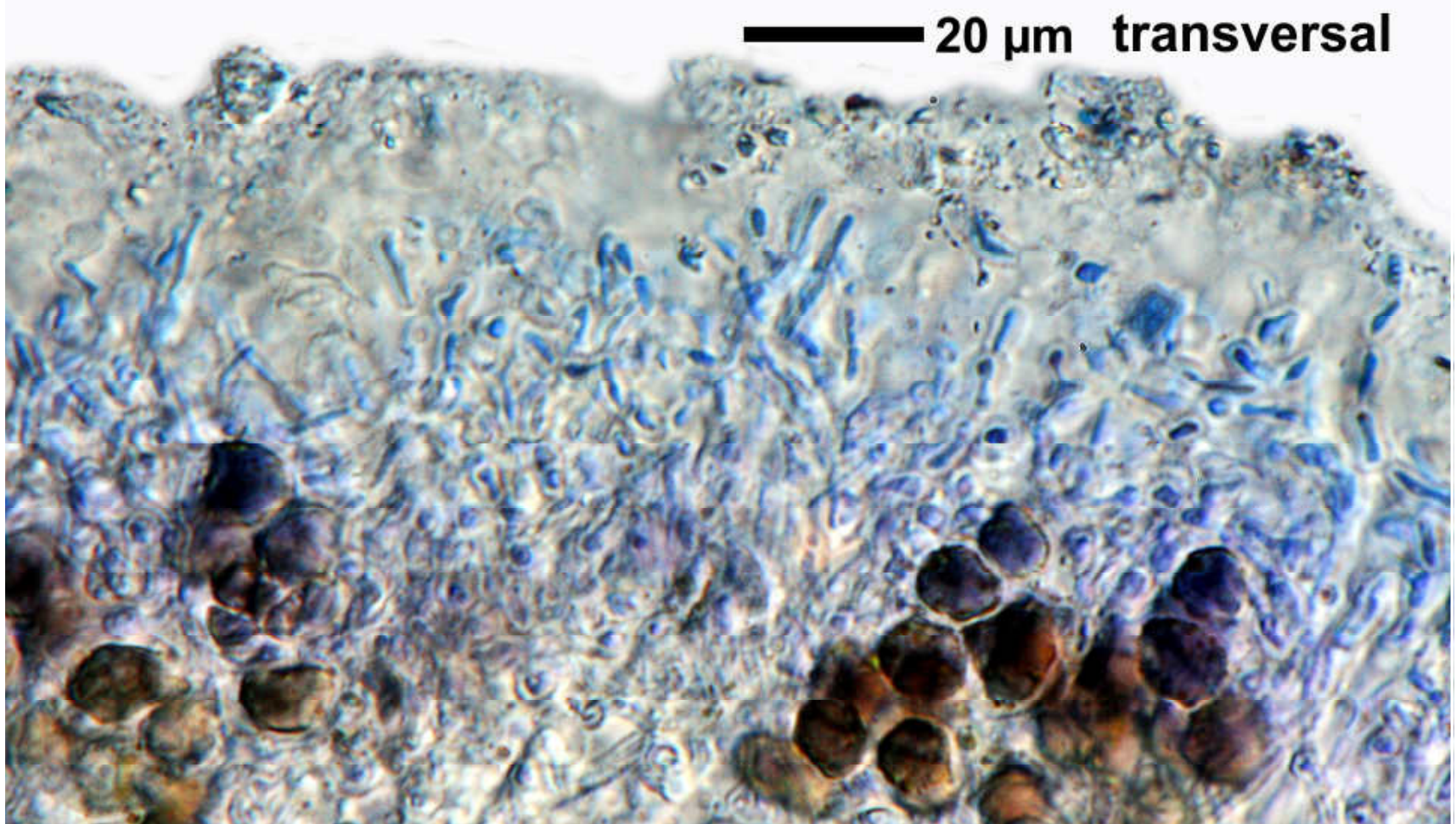
*Rocella hereroensis* Vain. (1923)

*Rocella mossamedana* Vain. (1901)

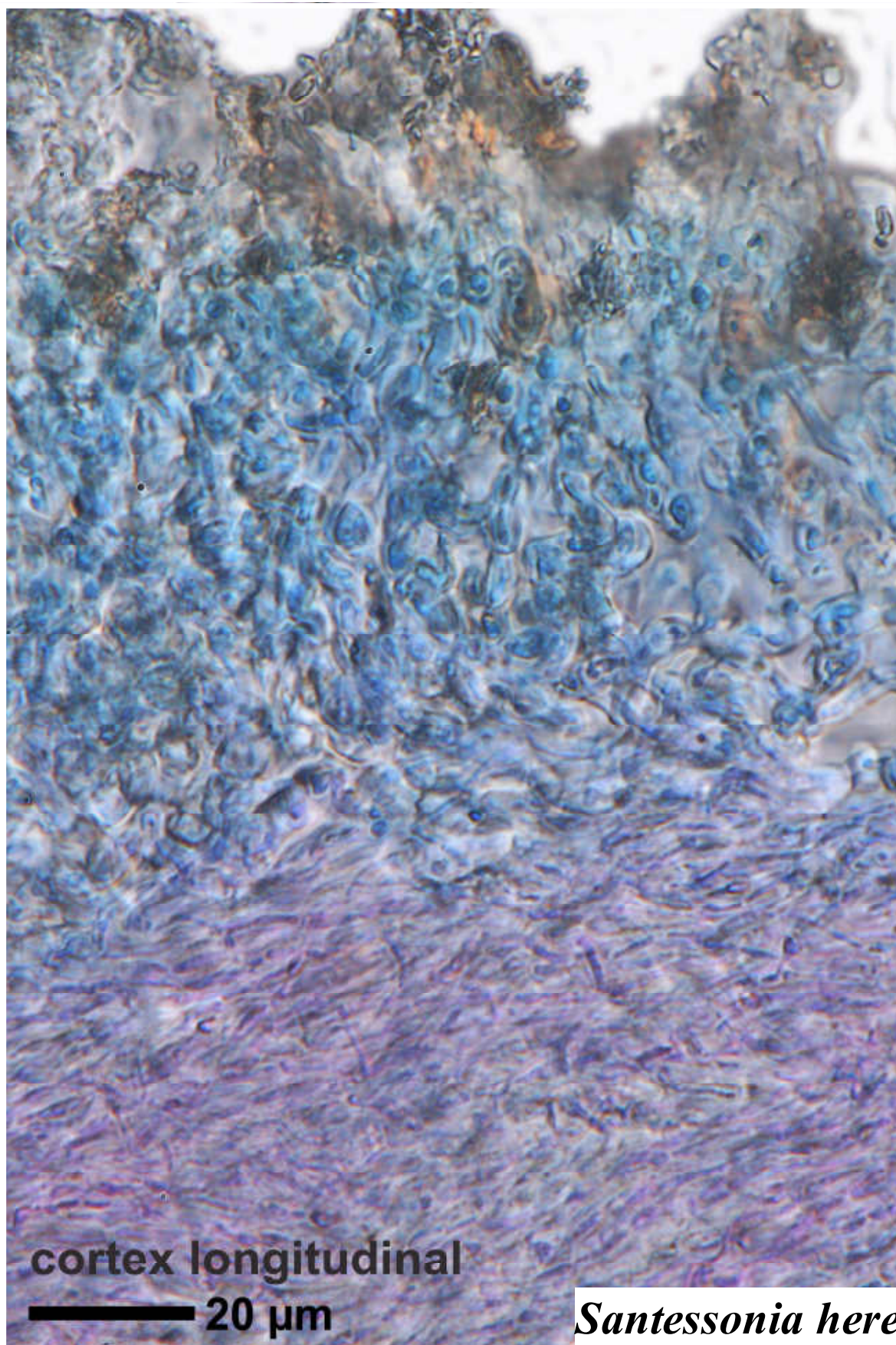
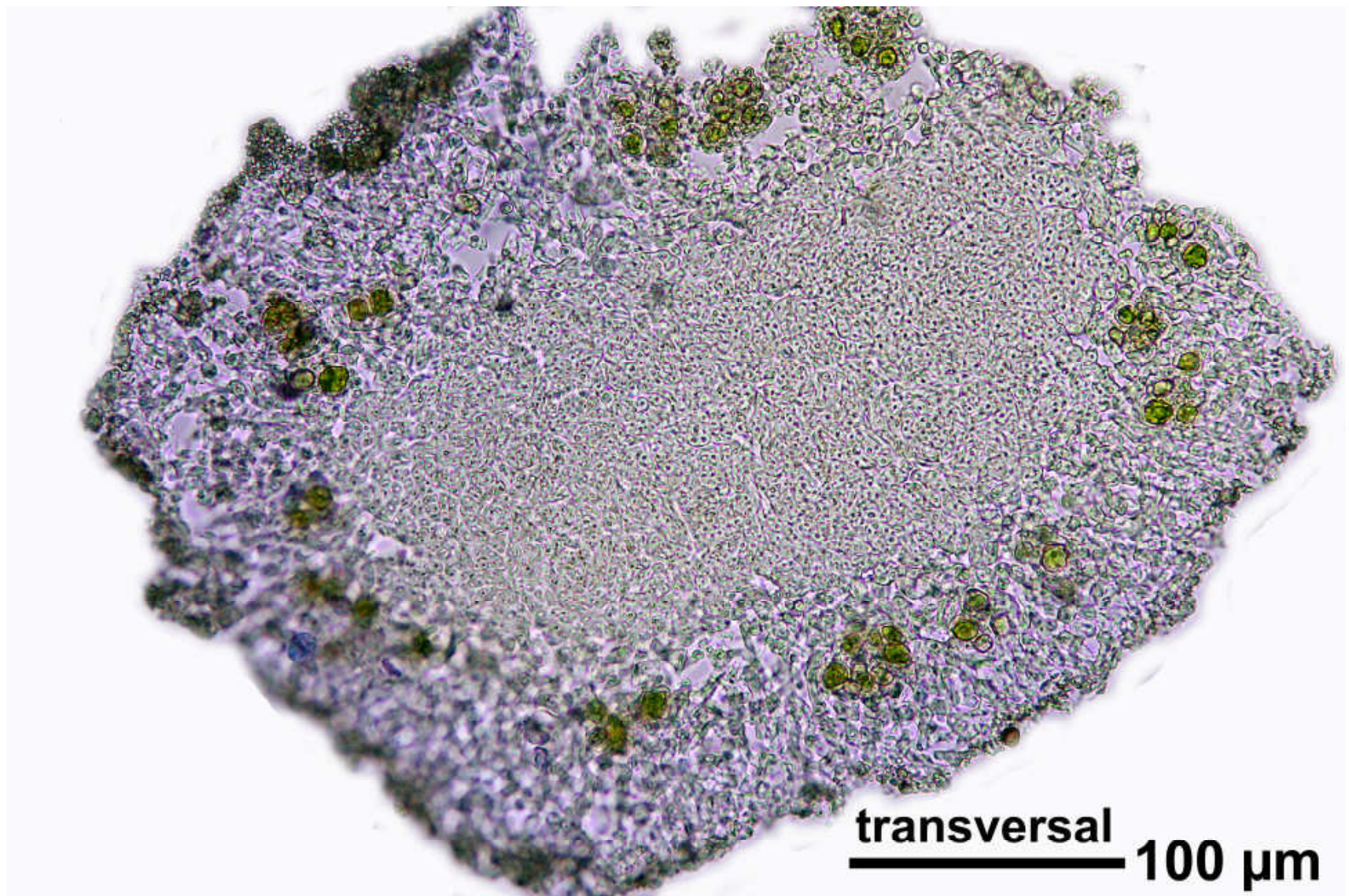
Thallus saxicolous, with *Trebouxia* algae, grey, soresiate, texture firm, cylindrical, surface smooth, holdfast internally white to brown. Cortex branched to intermediate type, with thick epinecral layer. Apothecia unknown. Cortex C –, K –, Pd + yellow, medulla C –, major substance psoromic. – Namibia.

Namibia, 135 km N of Swakopmund, Cape Cross, in desert just east of C34 road, on rock. Leg. C.M. van Herk 3. Sept. 2007, det. A. Aptroot. [ABLsnNam]





*Santessonia hereroensis*



*Santessonia hereroensis*