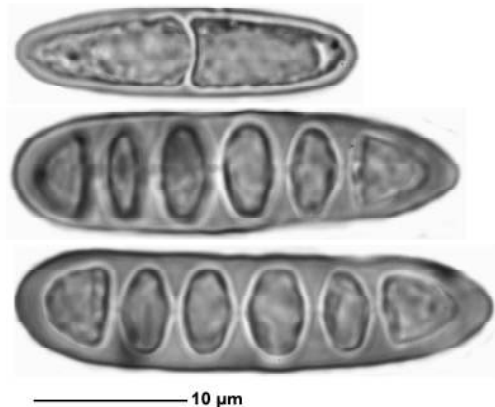
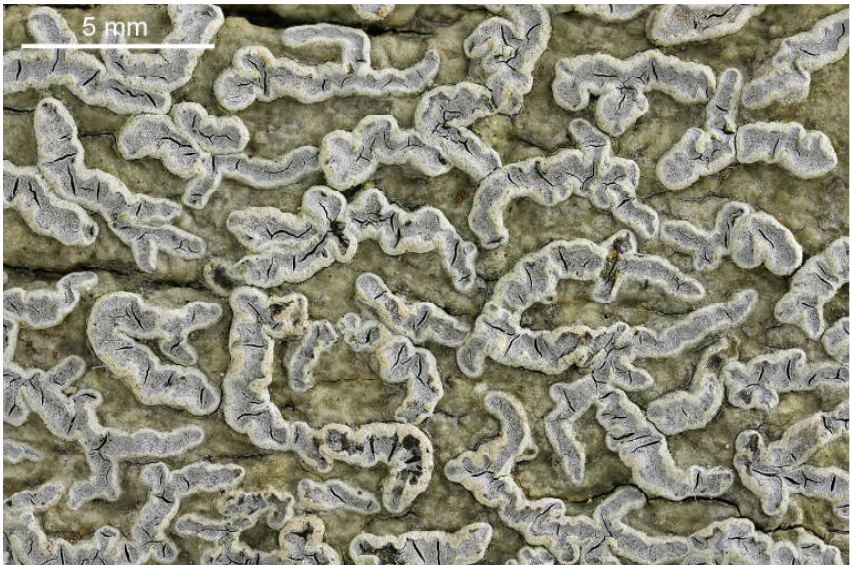
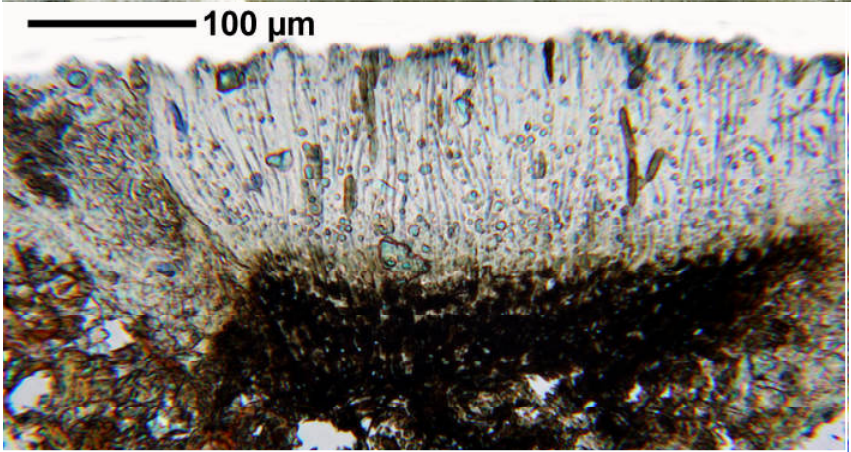
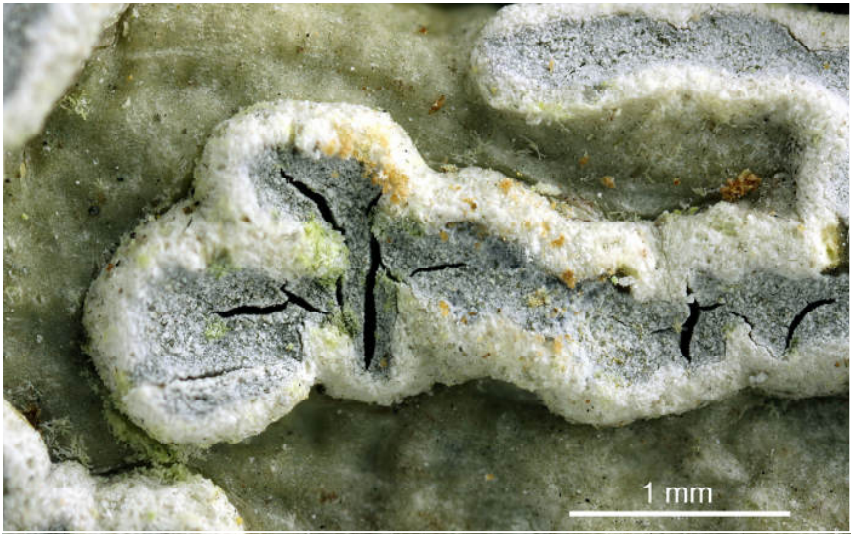


Sarcographa heteroclita (Mont.) Zahlbr.

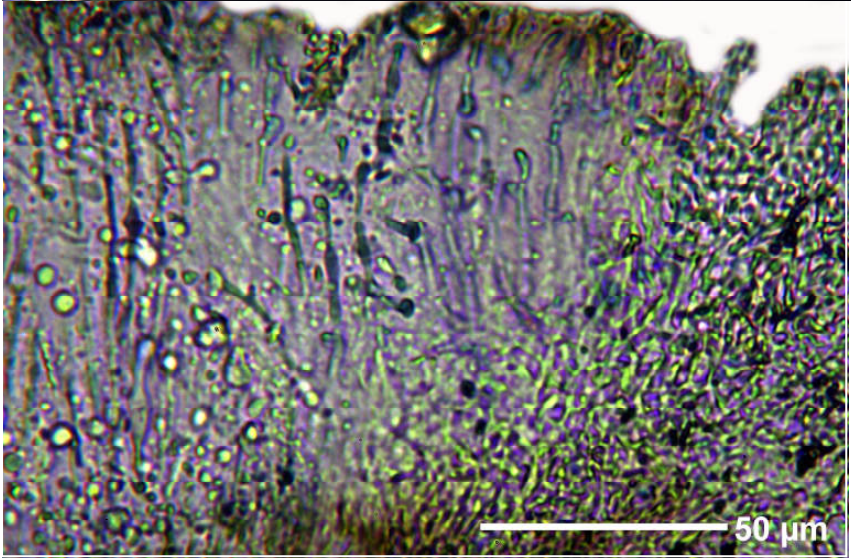
Stroma 1-10 mm long, 0.5-1.5 mm wide, often branched and gives the impression of lirellae only. Spores brown, 8/ascus, I-, 3-5 septate, 15-20(-27) x 5-8 μ m. Hymenium inspersed, I- (not blue). Hypothecium thick, carbonized. Chemistry: stictic, cryptostictic, constictic, hypostictic acids. Pantropical.

[14387], Sechelles, Praslin, Mündung des Cote Or River, östlich von Anse Volbert Village, 4°18.996' S, 55°44.780' E, 2 m. Leg. Schumm & Frahm 29.09.2008, det. Aptroot 2008.





Sarcographa heteroclita



Sarcographa heteroclita